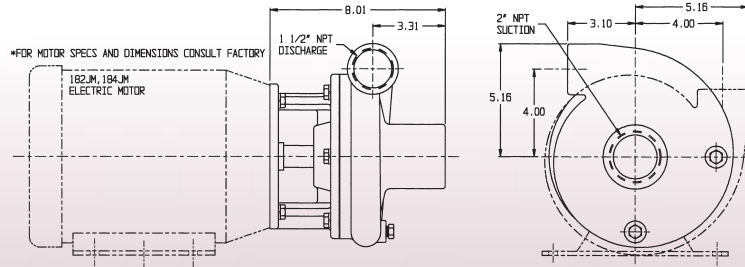


Features & Options

- 2" X 1 1/2" CENTRIFUGAL PUMP
- CLOSE-COUPLED TO ELECTRIC MOTOR
- OR PUMPAK ONLY TO MOUNT TO STANDARD NEMA "C" PUMP MOTOR 3HP, 5HP, 7.5HP
- FLOWS TO 200 GPM
- PRESSURES TO 140 FEET HEAD
- AVAILABLE IN: CAST IRON OR BRONZE CONSTRUCTION
- VERTICAL OR HORIZONTAL DISCHARGE
- WITH OR WITHOUT ELECTRIC MOTOR
- IMPELLER—BRONZE—ENCLOSED—(CAST IRON OPTIONAL)
- FASTENERS—STAINLESS STEEL
- SEALS—STANDARD VITON, OPTIONAL SEALS AVAILABLE (CONSULT FACTORY)
- OPTIONS: —HYDRAULIC DRIVES
—CLUTCHPAKS

DIMENSIONS



Pump Performance Curves

