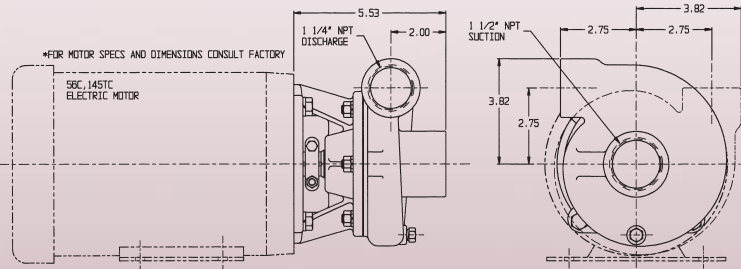


## Features & Options

- 1 1/2" X 1 1/4" CENTRIFUGAL PUMP
- CLOSE COUPLED TO ELECTRIC MOTOR
- OR PUMPAK ONLY TO MOUNT TO STANDARD NEMA "C" FACE MOTOR  
.75HP, 1HP, 1.5HP, 2HP
- FLOWS TO 130 GPM
- PRESSURES TO 60 FEET HEAD
- AVAILABLE IN: CAST IRON OR BRONZE CONSTRUCTION
- VERTICAL OR HORIZONTAL DISCHARGE
- WITH OR WITHOUT ELECTRIC MOTOR
- IMPELLER—CAST IRON OR BRONZE SEMI-OPEN
- SHAFT SLEEVE—STAINLESS STEEL TO FIT EITHER 5/8" OR 7/8" SHAFTS
- FASTENERS—STAINLESS STEEL
- SEALS—STANDARD VITON, OPTIONAL SEALS AVAILABLE (CONSULT FACTORY)
- OPTIONS: —PEDESTAL MODELS  
—HYDRAULIC DRIVES  
—CLUTCHPAKS

### DIMENSIONS



### Pump Performance Curves

