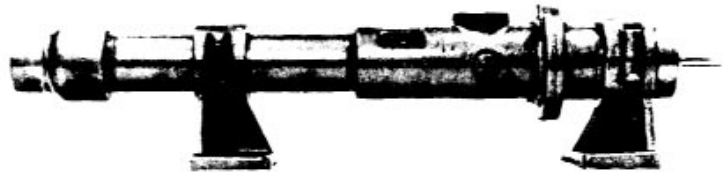


SERVICE MANUAL
MOYNO® 500 PUMPS
600 SERIES
60301, 61001, 62201, 63301, 65501, 60311,
61011, 62211, 63311, AND 65511* MODELS

DESIGN FEATURES

Housing: Cast iron
 Pump Rotor: Heavy duty chrome plated
 AISI 416 stainless steel
 Pump Stator: NBR (Nitrile)
 Shaft: AISI 416 stainless steel
 Bearings: Prelubricated, fully sealed ball bearings
 Seal: Mechanical or packing
 Flexible Joint: Prelubricated and sealed
 *Packing Models available through retrofit kit. See page 6.
 Note: Alternate elastomers available. Refer to Repair/Conversion kit numbers. page 6.



INSTALLATION

Mounting. Provide the proper alignment between the pump and drive by mounting both to a common flat base. Pump may be mounted in any position. When mounting vertically, it is necessary to keep bearings above seals to prevent possible seal leakage into bearings. Loosen screws on body support and stator support to rotate pump to desired position.

Pre-Wetting. Prior to connecting pump, wet pump elements and mechanical seal or packing by adding fluid to be pumped into suction port. Turn shaft over several times in a clockwise direction when viewed from the shaft end to work fluid into pump elements.

Piping. Piping to pump should be self-supporting to avoid excessive strain on pump housings. See Table 1 for suction and discharge port sizes of each pump model. Use pipe 'dope' or tape to facilitate disassembly and to provide seal.

Drive. On belt driven units, adjust belt tension to point of non-slip. Do not overtighten.

On direct drive units, coupling components should be aligned and spaced at least 1/16" apart.

Pump rotation must be clockwise when facing shaft.

Check direction of rotation before startup.

Maximum speed is 1750 rpm.

Water Flush of Packing (Packing Models Only).

The packing may be either grease lubricated through a grease fitting in the stuffing box or have plumbing connected to the housing to allow a water flush.

When the material being pumped is abrasive in nature, it may be advantageous to flush the packing to prevent leakage under packing and excessive shaft wear.

Clean water can be injected through a 1/8" NPT tapped hole that normally houses the grease fitting for lubricating the packing. The water can be permitted to leak axially along the shaft in either direction.

OPERATION

Self-Priming. With wetted pumping elements, the mechanical seal model pump is capable of 15 feet of suction lift when operating at 1750 rpm with pipe size equal to port size. The packing model is capable of 25 feet of suction lift.

DO NOT RUN DRY. Unit depends on liquid pumped for lubrication. For proper lubrication, flow rate should be at least 10% of rated capacity.

Pressure and Temperature Limits. See Table 1 for maximum discharge pressure of each model. Unit is suitable for service at 10° to 160°F with NBR (Nitrile), and to 210°F with EPDM (Ethylene-Propylene-Diene Terpolymer) elastomers.

Storage. Always drain pump for extended storage periods using pipe plug in suction housing.

Table 1. Pump Data

Pump Model	60301 60311	61001 61011	62201 62211	63301 63311	65501 65511
Suction Port (NPT)	3/4	3/4	3/4	1-1/4	1-1/4
Discharge Port (NPT)	1/2	3/4	3/4	1-1/4	1-1/4
Discharge Pressure (psig)	600	600	300	150	60
*Minimum Starting Torque (IN-LB)	95	180	90	70	60

*Based on water at ambient temperature.

TROUBLE SHOOTING

WARNING: Before making adjustments, disconnect power source and thoroughly bleed pressure from system. Failure to do so could result in electric shock or serious bodily harm.

Failure To Pump.

1. Belt or coupling slip: Adjust belt tension or tighten set screw on coupling.
2. Wrong rotation: Rotation must be clockwise when facing shaft.
3. Excessive suction lift, vacuum or obstruction in suction piping.
4. Flexible joint broken; possible excessive pressure:
Replace joint, check pressure at discharge port.

Will Not Start.

1. Insufficient horsepower: Check motor starting torque for minimum model starting torque given in Table 1.
2. Low voltage: Check power supply.

Pump Overloads.

1. Excessive discharge pressure: Check discharge pressure for maximum rating given in Table 1 above. Check for obstruction in discharge pipe.
2. Excessive temperature: Check fluid temperature for a maximum of 160°F.
3. Belt or coupling slip: Check pressure at discharge port.
4. Loose bond in stator: High temperature and caustics will cause bond between rubber and tube to fail. Replace stator, check fluid temperature and pressure at discharge port.
5. Fluid viscosity too high: Recommended maximum RPM.

Viscosity CP	Limit RPM
1-300	1750
300-1,000	1200
1,000-2,000	700
2,000-5,000	350
5,000-10,000	180
10,000-20,000	100

6. Motor connected incorrectly: Motor wired for 230 VAC, connected to 115 VAC service.

Noisy Operation.

1. Starved suction: Check fluid supply, length of suction line, and obstructions in pipe.
2. Bearings worn: Replace parts; check alignment, belt tension, pressure at discharge port.
3. Broken flexible joint: Replace part; check pressure at discharge port.

4. Insufficient mounting: Mount to be secure to firm base. Vibration induced noise can be reduced by using mount pads and hose on suction and discharge ports.

Poor Performance.

1. Low pressure; worn stator: Replace stator: check for excessive abrasive material in fluid, check for run dry condition.

Mechanical Seal Leakage (Mechanical Seal Models Only).

1. Leakage at startup: If leakage is slight, allow pump to run several hours to let faces run in.
2. Persistent seal leakage: Faces may be cracked from freezing or thermal shock. Replace seal.

Packing Leakage (Packing Models Only).

1. Leakage at startup: Adjust packing as outlined in maintenance instructions.

Note: Slight leakage is necessary for lubrication of packing.

2. Persistent leakage: Packing rings and/or shaft may be worn. Replace parts as required.

Pump Will Not Prime.

1. Air leak on suction side: Check pipe connections. Suction lift over 15 ft. will cause seal faces to open.
2. Defective mechanical seal: Inspect and repair as necessary.

MAINTENANCE

General. These pumps have been designed for a minimum of maintenance, the extent of which is routine lubrication and adjustment of packing. The pump is one of the easiest to work on in that the main elements are very accessible and require few tools to disassemble.

Packing Lubrication (Packing Models Only). The zerk fitting on the top of the packing housing leads to the lantern ring halves in the mid-section of the packings. At least once a week, inject a small quantity of good quality grease, such as MPG-2 Multi Purpose Grease (DuBois Chemical), or equivalent, into the zerk fitting to lubricate the packings.

Packing Adjustment (Packing Models Only). Packing gland attaching nuts should be evenly adjusted so they are little more than finger tight. Over-tightening of the packing gland may result in premature packing failure and possible damage to the shaft and gland.

When the packing is new, frequent minor adjustments are recommended for the first few hours of operation in order to compress and seat the packing. Be sure to allow slight leakage for lubrication of packing.

When excessive leakage can no longer be regulated by tightening the gland nuts, remove and replace the packings in accordance with the DISASSEMBLY and REASSEMBLY instructions. The entire pump need not be disassembled to replace the packings.

Bearing Lubrication. The prelubricated, fully sealed bearings do not require additional lubrication.

PUMP DISASSEMBLY

WARNING: Before disassembling pump, disconnect power source and thoroughly bleed pressure from system. Failure to do so could result in electric shock or serious bodily harm.

1. Disconnect power source.
2. Remove suction and discharge piping.
3. Reducer (9) may be removed from stator (21) by unscrewing in a counter-clockwise direction (RH thread).
4. Remove stator support screws (112B) and remove top half of stator support(s) (38).
5. Stator (21) may be removed from suction housing (2) by unscrewing in a counter-clockwise direction (RH thread). Use a strap wrench on stator to avoid crushing with a pipe wrench. Pull stator (21) from rotor (22). To assist removal of stator, hold shaft (26) from turning and turn stator clockwise when facing suction housing after disengaging thread.
6. Remove screws (112) holding suction housing (2) to bearing housing (1). Remove suction housing and suction housing gasket (83).
7. The rotor (22) and flexible joint (24) may be removed using the following procedure (do not bend joint more than 15 degrees).
 - a. Remove rotor (22) from flexible joint (24) by using a punch to remove rotor pin (46). Support joint while removing pin.

Note: On Model 603 only, remove adaptor (264) from rotor by turning in a counter-clockwise direction (RH Thread.)

- b. Remove joint (24) from shaft (26) by using a punch to remove shaft pin (46).
8. **Mechanical Seal Models.** Carefully slide mechanical seal (69) off shaft (26). Carefully pry seal out of bearing housing (1). If any parts of mechanical seal are worn out or broken, the complete assembly should be replaced. Seal components are matched parts and are not interchangeable.
9. **Packing Models.** Remove bolts attaching packing gland housing (3) to bearing housing (1) and remove packing gland housing. Disconnect drive shaft extension (27) by using a punch to remove shaft pin (46).

The packing (42) can be removed without removing the shaft (27) using the following procedure:

- a. Remove gland bolts (47).
- b. Slide gland (41) away from packing (42).
- c. Pull out packing (42) and lantern ring halves (57) using a packing-removing tool.

Note: If shaft (27) has been removed, the packing can be removed easily by pushing out from pump side of packing gland housing (3).

10. The bearings (29 and 30) and shaft (26) assembly can be removed from bearing housing (1) after snap ring (66) has been removed. To remove the shaft assembly, lightly tap the shaft at the flexible joint connection end using a block of wood to protect the shaft. The bearings may be pressed off the shaft.

PUMP ASSEMBLY

1. Press radial bearing (29) and thrust bearing (30) on shaft (26), and locate slinger ring (77) on the shaft near the radial bearing.

Note: When replacing bearings, always press on the inner race when assembling to shaft, and on the outer race when pressing bearings into the housings.

2. Press shaft assembly into bearing housing (1) securing with snap ring (66).
3. **Mechanical Seal Models.** Install mechanical seal (69) using the following procedure:
 - a. Clean and oil sealing faces using a clean light oil (not grease).

Caution: Do not use oil on EPDM parts. Substitute glycerin or soap and water.

- b. Oil the outer surface of the seal seat, and push the assembly into the seal bore in the bearing housing (1), seating it firmly and squarely.
 - c. After cleaning and oiling shaft, slide the seal body along the shaft until it meets the seal seat.
 - d. Install seal spring and spring retainer on shaft.
4. **Packing Models.** Install packing before installing shaft assembly using the following procedure:
 - a. Lubricate each individual ring of packing (42) with a grease that is insoluble in the fluid being pumped.
 - b. Individually assemble each ring of packing loosely in the stuffing box of the packing gland housing (3). Seven rings of 1/4" square plus 2 lantern ring halves required—assemble with 3 rings, 2 lantern ring halves (57), followed by 4 rings. Stagger split in rings.
 - c. Loosely install packing gland (41) in packing gland housing (3) using gland bolts (47).
 - d. Attach drive shaft extension (27) to drive shaft (26) by installing pin (46). Support shaft during installation.
 - e. Install slinger ring (77) on drive shaft extension (27).
 - f. Slide packing gland housing (3) on drive shaft extension, and attach to bearing housing with bolts (112).
5. The flexible joint (24) and rotor (22) may be installed using the following procedure (do not bend joint more than 15 degrees):

Note: On model 603 only, pin adaptor (264) to flexible joint (24) with rotor pin (46), then thread rotor (22) on adaptor by turning clockwise (RH Thread.)

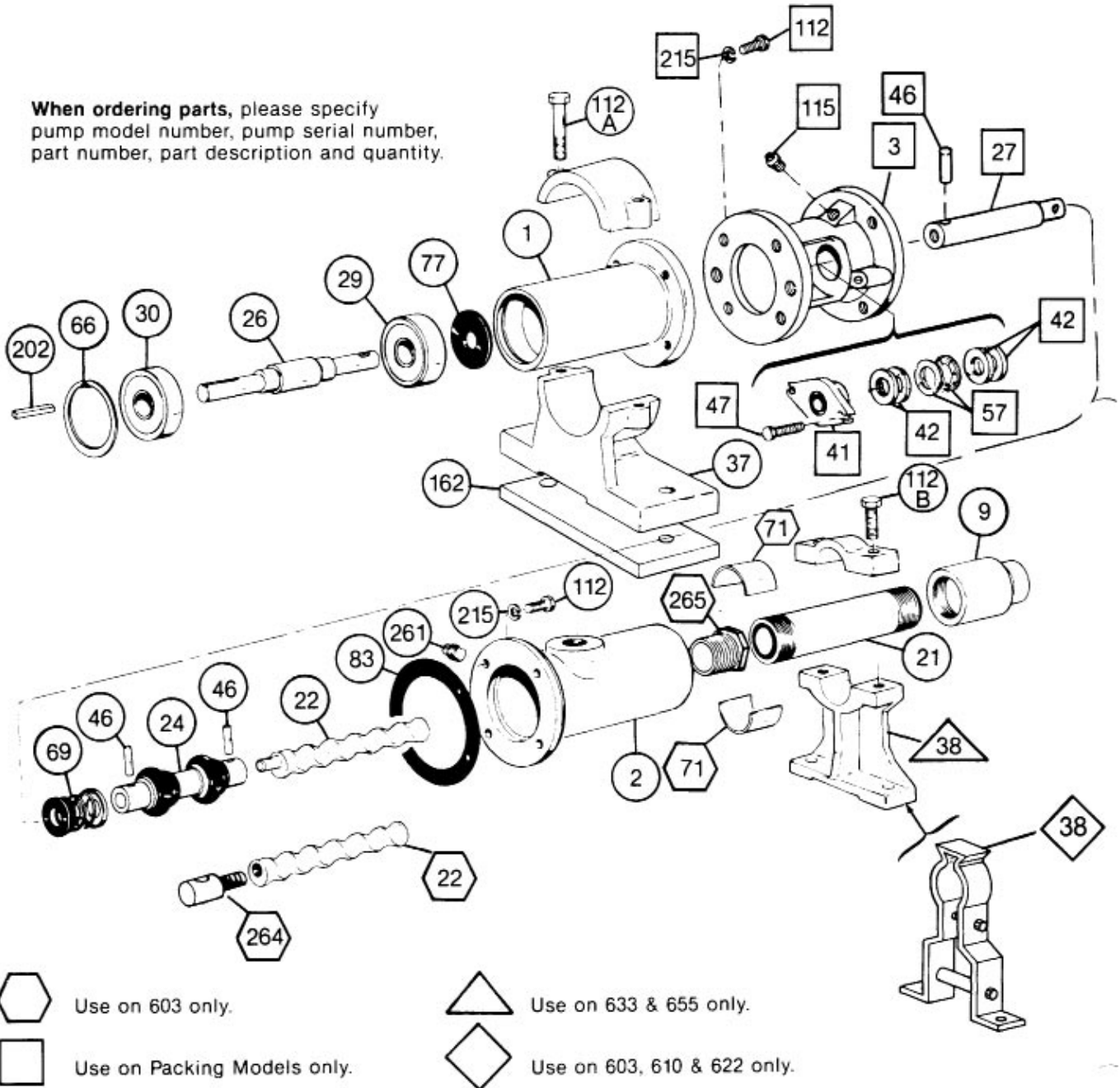
- a. Pin flexible joint (24) to shaft (26) using shaft pin (46).
 - b. Pin rotor (22) to joint using rotor pin (46). Support joint while installing pin.
6. Secure suction housing gasket (83) and suction housing (2) to bearing housing (1) using lock washers (215) and screws (112).
7. Screw reducer (9) on stator (21) in a clockwise direction (RH thread).

Note: Apply pipe "dope" on all pipe threads before assembly.

8. Lubricate rotor (22) surface to assist installation of stator (21). Slide stator on rotor, using stator support(s) (38) as a guide, and screw into suction housing (2) by turning clockwise (RH threads). An additional assist in installing stator is to lock the shaft from turning and rotate the stator counterclockwise while pushing towards suction housing. Care should be taken to insure that flexible joint does not bend more than 15 degrees.
9. Secure top and bottom halves of stator support (38) together using screws (112B). Model 603 requires stator support bushings (71) between stator and stator support.
10. Proceed as in installation instructions.

WARNING: Replace belt or coupling guards before reconnecting power.

When ordering parts, please specify pump model number, pump serial number, part number, part description and quantity.



PARTS LIST

Item No.	Description	Pump Model Number				
		60301 60311	61001 61011	62201 62211	63301 63311	65501 65511
1	Bearing Housing	330-3552-000				
2	Suction Housing	330-2112-001			330-2112-003	
‡3	Packing Housing	‡340-2368-000				
9	Reducer	320-6110-000	320-1414-004		320-6539-000	320-6539-000
*21	Stator	320-6108-006	320-5466-006	320-3902-004	330-2608-002	330-2612-001
*22	Rotor	330-4606-000	330-4607-000	330-4608-000	330-4609-000	330-4610-000
24	Flexible Joint	320-3944-000				
26	Drive Shaft	330-3553-000				
‡27	Drive Shaft Extension	‡330-4586-000				
29	Radial Bearing	630-0503-051				
30	Thrust Bearing	630-0503-051				
37	Body Support	330-3554-000				
38	Stator Support	330-4461-000			330-0413-000	
‡41	Packing Gland	‡320-0003-004				
‡42	Packing	‡340-3396-008				
46	Rotor Pin/Shaft Pin (3 req.)	320-4486-003				
‡47	Gland Bolt (2 req.)	‡619-1530-241				
‡57	Lantern Ring Half (2 req.)	‡320-6585-000				
66	Snap Ring	320-2794-000				
@69	Mechanical Seal	@320-3945-000				
71	Stator Support Bushing (2 req.)	320-5306-000				
77	Slinger Ring	320-6384-000				
*83	Suction Housing Gasket	320-3028-000				
@112	Screw (4 req.)	@619-1520-161				
‡112	Screw (8 req.)	‡619-1520-161				
112A	Screw (2 req.)	619-1530-281				
112B	Screw (2 req.)	@619-1520-163			619-1530-241	
		‡619-1520-363				
‡115	Zerk Fitting	‡320-2503-001				
162	Support Shim	‡320-0077-003				
202	Shaft Key	611-0030-200				
@215	Lock Washer (4 req.)	@623-0010-401				
‡215	Lock Washer (8 req.)	‡623-0010-401				
261	Pipe Plug	610-0120-021				
264	Rotor Adaptor	320-6388-000				
265	Stator Adaptor	320-6389-001				

‡ Use only on Packing Gland Models (Model No. ends with 11)

@ Use only on Mechanical Seal Models (Model No. ends with 01).

* Recommended spare parts.

REPAIR/CONVERSION KIT NUMBERS (EPDM ELASTOMER)

Item No.	Description	Pump Models				
		603	610	622	633	655
–	Kit No.	311-9129-000	311-9130-000	311-9131-000	311-9132-000	311-9133-000
21	• Stator	320-6470-006	320-6471-006	320-6472-004	320-6473-002	320-6474-001
69	• Seal	320-6380-000				
24	• Joint	320-6523-000				

**REPAIR/CONVERSION KIT NUMBERS
(ABRASION RESISTANT SEAL)**

Description	All Mechanical Seal Models Only
NBR Kit No.	320-6505-000
EPDM Kit No.	320-6506-000

NBR = Nitrile

EPDM = Ethylene Propylene Diene Terpolymer

**REPAIR/CONVERSION KIT NUMBERS
(PACKING GLAND)**

Item No.	Description	All Packing Gland Models
–	Kit No.	311-9049-000
3	• Packing Housing	340-2368-000
27	• Drive Shaft Extension	330-4586-000
41	• Packing Gland	320-0003-104
42	• Packing Set	340-3351-008
46	• Shaft Pin (3 req.)	320-4486-003
47	• Gland Bolt (2 req.)	619-1530-241
57	• Lantern Ring Half (2 req.)	320-6385-000
112	• Screw (4 req.)	619-1520-161
115	• Zerk Fitting	220-2503-001
215	• Lock Washer (4 req.)	623-0010-401

Double The Length Of Your Moyno Pump Warranty For FREE!

For your *free* pump warranty extension, choose from one of the three options below:

1. Go to www.moyno.com and fill out the registration form online
2. Mail this form by placing it in an envelope and sending it to: **Moyno, Inc.**
Attn: Tish Wilson
P. O. Box 960
Springfield, OH 45501-0960
U.S.A.
3. Fax this form to 937-327-3177

Thank you for choosing a Moyno Pump. Please take the time to complete this warranty registration form. Upon receipt of your form, your standard limited warranty on defective material and workmanship will be extended to twice the standard period of time at no additional cost to you. We appreciate your business and look forward to serving you in the future.



Always Insist on Genuine Moyno Replacement Parts!

Moyno® Pump Warranty Registration

Pump Model # _____ Pump Serial # _____
 Purchased From _____ Date Purchased _____
 Your Name _____ Your Title _____
 Your Company Name _____
 Address _____
 City/State (Province)/Zip Code _____
 Phone Number _____ Fax Number _____
 E-mail _____

Application for Which This Pump Was Purchased

Material _____ Flow Rate _____ Process Temperature _____
 Operating Speed _____ Viscosity _____ pH Value _____
 Hours Operated per Day _____ Continuous _____ Intermittent _____
 Discharge Pressure _____ Suction Pressure _____ NPSH Available _____
 Percent of Solids _____ Particle Size _____ Abrasion Rating _____

How Did You First Hear of Moyno Pumps?

- Advertisement
 Postcard
 Trade Show
 Referral
 Distributor Salesperson
 Previous Experience With Moyno Pumps
 Other – Explain Below

Thank You!