



Always the Right Solution™

Section:  
**Moyno® 500 PUMPS**

Page: 1 of 2

Date: September 30, 1996

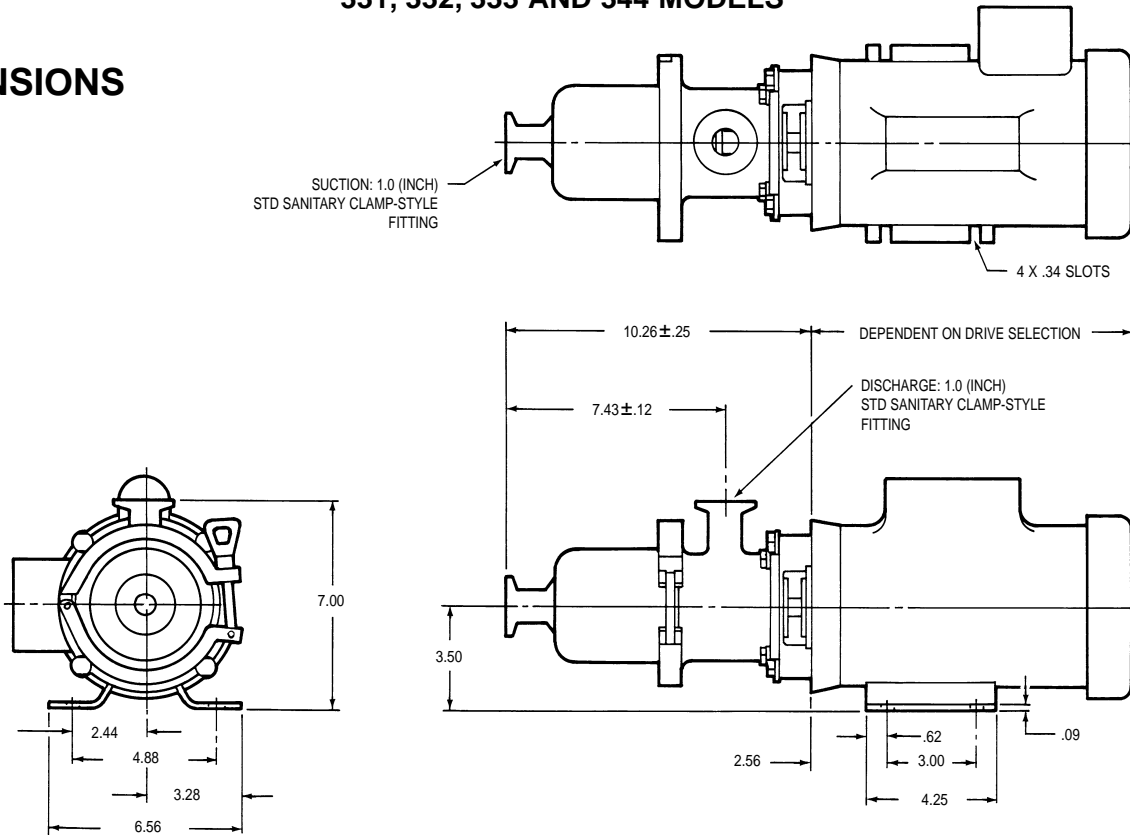
SPECIFICATION DATA

**MOYNO® 500 PUMPS**

SANITARY/HYGIENIC MOTORIZED

**331, 332, 333 AND 344 MODELS**

**DIMENSIONS**



**MATERIALS OF CONSTRUCTION**

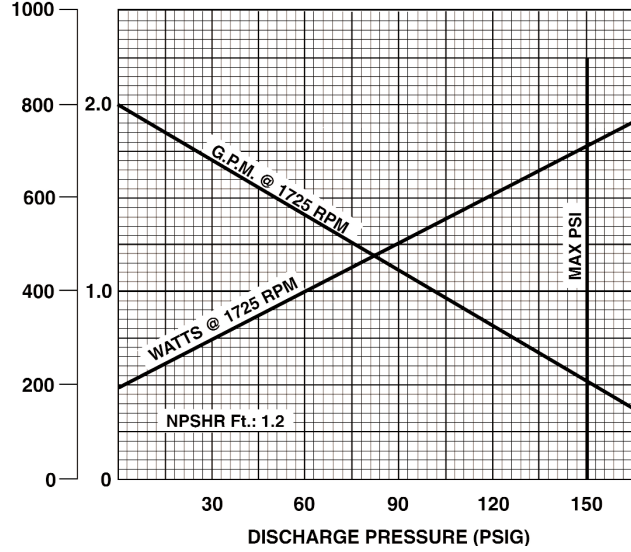
COMPONENT	SANITARY MODELS		HYGIENIC MODELS	
	33116, 33216 33316, 34416	33126, 33226 33326, 34426	33117, 33217 33317, 34417	33127, 33227 33327, 34427
Housings	316 SS#4 Finish	316 SS#4 Finish	316 SS (Not Polished)	316 SS (Not Polished)
Rotor	316 SS/CP	316 SS/CP	316 SS/CP	316 SS/CP
Stator	Nitrile (FDA Food Grade)	Nitrile (FDA Food Grade)	NBR (Nitrile STD.)	NBR (Nitrile STD.)
Motor Data	1/2 HP, 1 PH 115/230 VAC 60 HZ TEFC Washdown Duty	1/2 HP, 90V DC, TENV Washdown Duty	1/2 HP, 1 PH 115/230 VAC 60 HZ TEFC	1/2 HP, 90V DC, TENV
Weight (lbs)	41	41	41	41

CP=Chrome plated

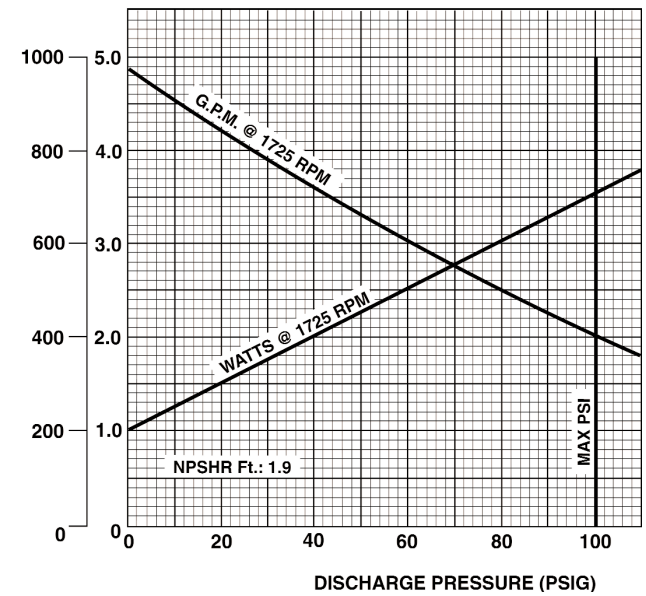
**All dimensions are in inches.  
 Specifications subject to change without notice.**

# 331, 332, 333 and 344 MODELS PERFORMANCE (Water at 70°F)

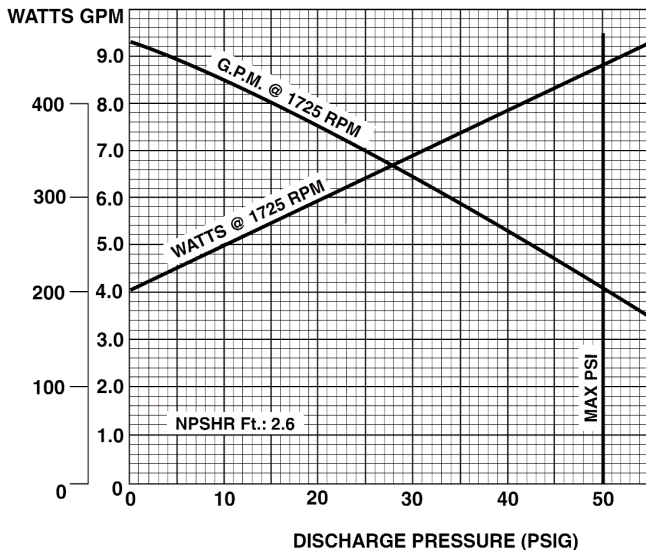
WATTS GPM 331 MODELS



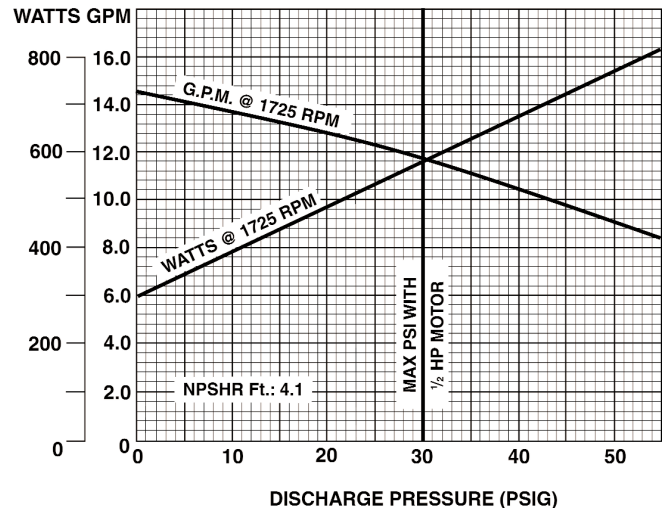
WATTS GPM 332 MODELS



333 MODELS



344 MODELS



**NOTE: With the standard 1/2 HP motor, maximum fluid viscosity is 100 CP (500 SSU).**