

# SUMP & SEWAGE SUBMERSIBLE SEWAGE PUMPS

WSV52H

Water Systems

Sump and Sewage

Lawn and Sprinkler

Electric Motor Driven

Engine Driven

Frame Mount

Hand Pumps

Irrigation and Industrial



## WSV52H SERIES SUBMERSIBLE SEWAGE PUMPS VORTEX

**CONSTRUCTION** - Motor housing, pump volute, and impeller are cast iron.

**CORD** - 20 foot power cord sealed at motor housing.

**IMPELLER** - A high capacity cast iron vortex impeller, designed for superior solids handling capabilities. This impeller is able to pass 2" solids by creating a vortex. Solids do not come into contact with the impeller. This provides superior clog free operation.

**MOTOR** - Powerful CSA approved 115 volt, oil free PSC motor. Rated for continuous duty, with thermal overload protection and double ball bearings for reliability.

**SWITCH** - Mercury Free piggy-back float switch for automatic on-off operation.

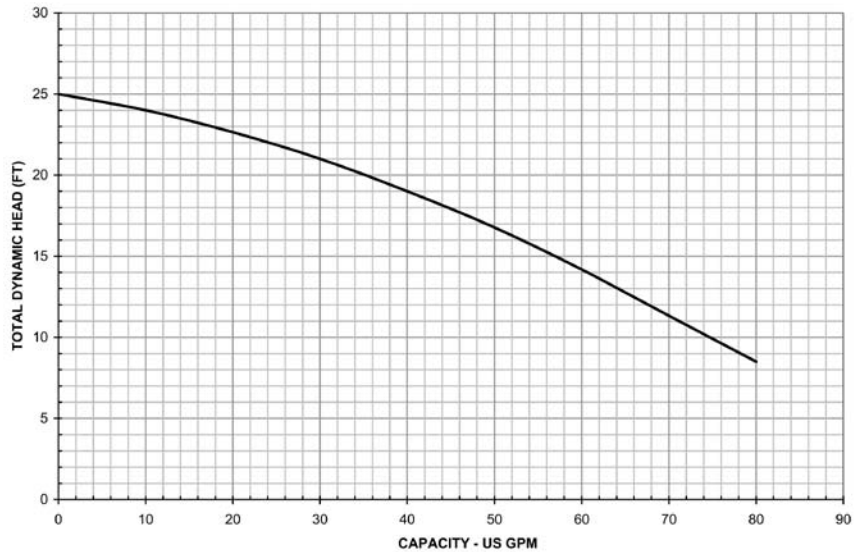
**DISCHARGE** - 2" NPT.

**FASTENERS** - 304 Stainless steel fasteners throughout, for serviceability.

**SEAL** - Carbon Ceramic mechanical seal.

**SHAFT** - 300 Grade stainless steel for corrosion resistance.

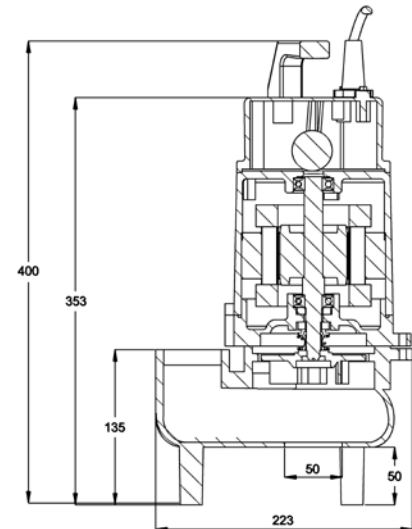
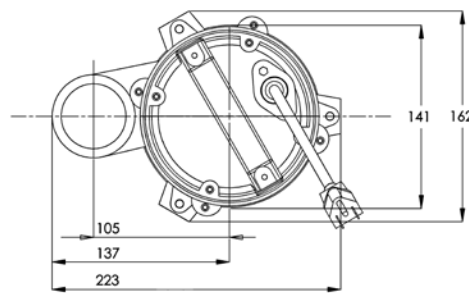
### Performance



**NEW!**  
**2 Year**  
**Warranty**

Model No.	PERFORMANCE CHART				Shut-Off Head (ft.)
	Total Head in Feet				
	5	10	15	20	
	Capacities in U.S. GPM				
WSV52H	90	75	57	35	25

### Dimensions



\*Dimensions measured in inches

#### SUBMERSIBLE SEWAGE PUMPS - AUTOMATIC AND MANUAL

Model No.	Order No.	HP	Volts	SFA	Phase	Solids Handling	Ship Wt. (lbs.)	Switch	Cord Length
WSV52HM	620235	½	115 V	6.8	1	2"	36	Manual	20'
WSV52HAM	620236	½	115 V	6.8	1	2"	38	Automatic	20'