

SUMP & SEWAGE SUMP PUMPS



SP33A

SP33 SERIES

SUBMERSIBLE SUMP PUMP

SOLIDS HANDLING CAPABILITY - 1/4"

MOTOR - 1/3 HP, 115 volt, thermal overload protected, CSA approved. 3.5 full load amps. Continuous duty "oil free" motor. Stainless steel motor housing improves heat dissipation for longer motor life. Complete with a 10 foot power cord. Stainless steel heat treated shaft. Permanently lubricated lip seal.

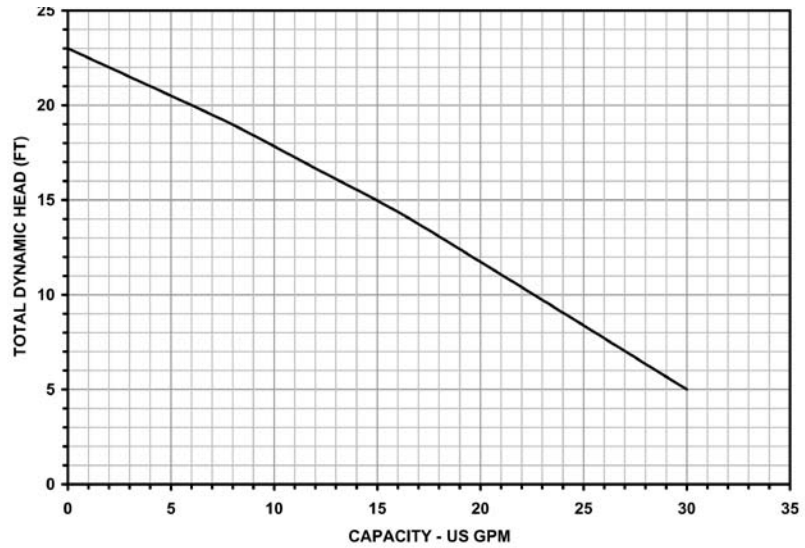
PUMP CASING - Fully constructed of durable reinforced thermoplastic for excellent corrosion resistance. 1 1/4" NPT discharge for ease of installation.

IMPELLER - Non clogging design constructed of durable reinforced thermoplastic.

SWITCH - Automatic, mercury free, mechanical float switch.

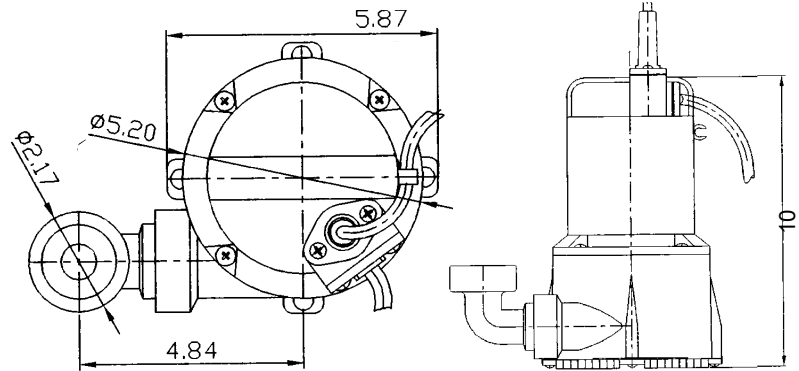
BOTTOM SUCTION DESIGN - Built-in suction strainer to eliminate internal damage from possible debris. Removable filter screen for easy cleaning.

Performance



PERFORMANCE CHART					
Model No.	Total Head in Feet				Shut-Off Head (ft.)
	5	10	15	20	
	Capacities in U.S. GPM				
SP33	30	23	16	5	23

Dimensions



SUBMERSIBLE SUMP PUMP - 1 1/4" DISCHARGE					
Model No.	Order No.	HP	Ship Wt. (lbs.)	Description	
SP33A	620135	1/3	10	Submersible sump pump with automatic float switch.	

SP33

Water Systems

Sump and Sewage

Lawn and Sprinkler

Electric Motor Driven

Engine Driven

Frame Mount

Hand Pumps

Irrigation and Industrial