

# ELECTRIC MOTOR DRIVEN SELF PRIMING



## B50S

### UTILITY TRANSFER PUMP

The B50S pump is a self priming utility pump. It is constructed of durable cast iron which makes it last long in a variety of applications.

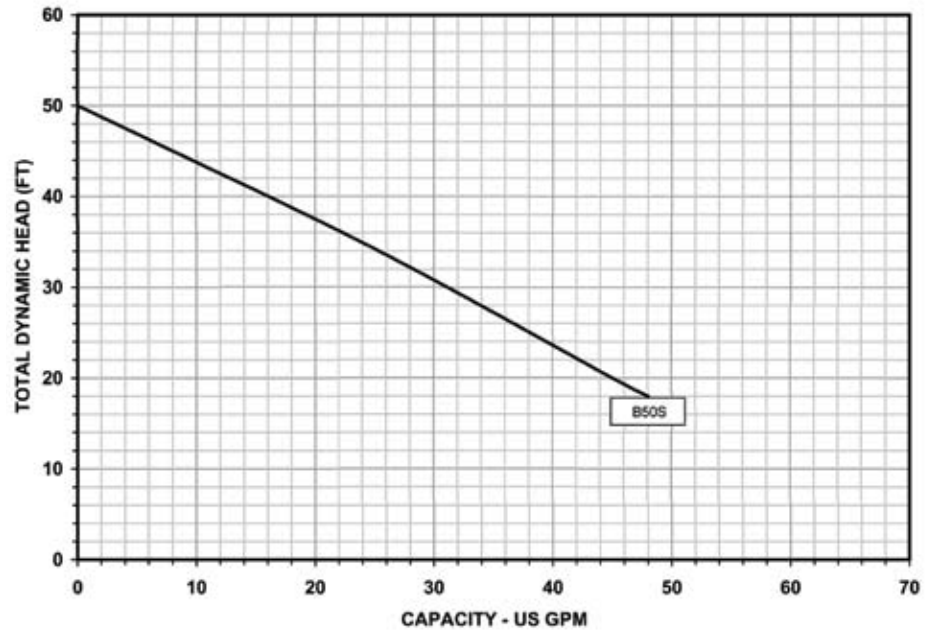
This pump is designed to be very simple to operate. This is made possible by the self priming casing and built-in suction check valve which is engineered to prime itself quickly once it has been filled with water.

**CASING** - Made of rugged cast iron with a large chamber for rapid self priming.

**MOTOR** - The B50S pump comes with a **higher than NEMA standard service factor**, dual compartment reliable industry standard ½ HP motor, and is configured with an 8 ft power cord.

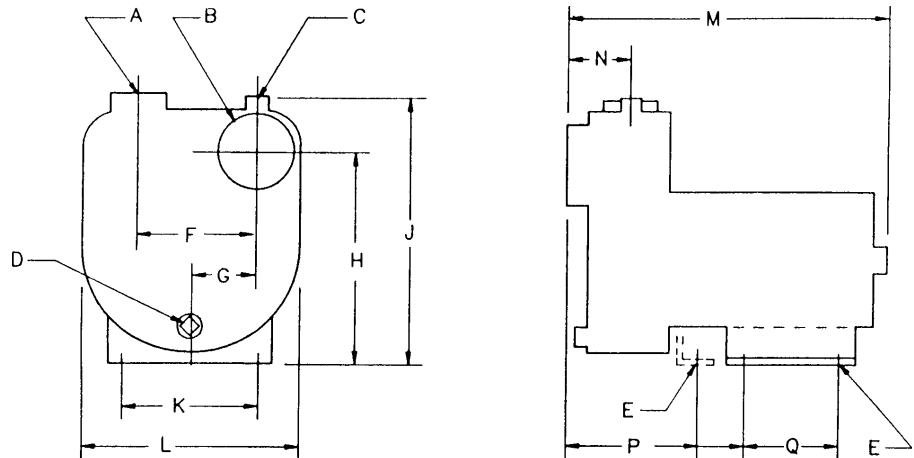
**IMPELLER** - Semi-open, cast iron impeller.

## Performance



		PERFORMANCE CHART								
Model No.	RPM	HP	Total Head in Feet							
			20	30	40	50	60	70	80	90
B50S	3450	½	45	31	16	0	-	-	-	-

## Dimensions



Model	Length	Width	Height	HS	Ship Wt. (lbs.)
B50S	7.5	9.87	7.62	4.3	43

\*Dimensions measured in inches

ELECTRIC MOTOR DRIVEN						
Model No.	Order No.	HP	Suct. NPT	Disch. NPT	Electrical Characteristics	Ship Wt. (lbs.)
*B50S	621814	½	1¼"	1¼"	1/60/115/230 Capacitor start	43

\* Includes: Handle, cord and garden hose adapter.

B50S

Water Systems

Sump and Sewage

Lawn and Sprinkler

Electric Motor Driven

Engine Driven

Frame Mount

Hand Pumps

Irrigation and Industrial

# ELECTRIC MOTOR DRIVEN SELF PRIMING

## BSE-S ELECTRIC MOTOR DRIVEN

The BSE-S Series pumps are self priming utility pumps. They are constructed of durable cast iron which makes them long lasting in a variety of applications.

The BSE-S pumps are designed to be very simple to operate. This is made possible by the self priming casing which is engineered to prime itself quickly once it has been filled with water.

**CASING** - Made of rugged cast iron with a large chamber for rapid self priming.

**PRIMING PLUG** - Fits the standard garden hose for easy priming.

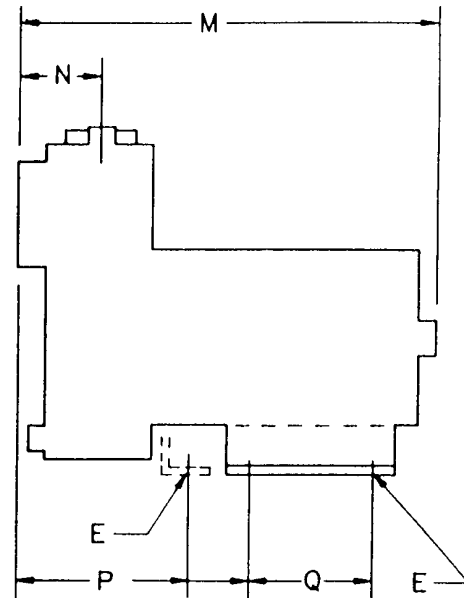
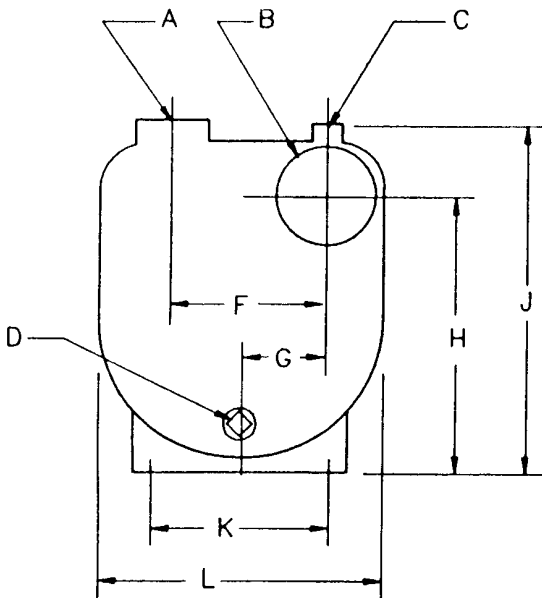
**MOTOR** - The BSE pump comes with a reliable industry standard motor. Motors range from ½ to 2 HP and use higher than NEMA service factor dual compartment motors.

**IMPELLER** - Semi-open, cast iron impeller, ideal for handling fertilizer, salt water,

dirty water or other liquids. The impeller is blind hole tapped so liquid will not corrode the shaft.



### Dimensions



Model	Discharge A (NPT)	Suction B (NPT)	Priming Plug C (NPT)	Drain Holes D (NPT)	Mounting E	F	G	H	J	K	L	M	N	P	Q
BSE-S50	1¼	1¼	¾	¾	.44x.94	4.00	2.00	7.75	10.00	4.88	7.50	14.60	3.18	8.06	3.00
BSE-S75	1¼	1¼	¾	¾	.44x.94	4.00	2.00	7.75	10.00	4.88	7.50	15.40	3.18	8.06	3.00
BSE-S100	1¼	1¼	¾	¾	.44x.94	4.00	2.00	7.75	10.00	4.88	7.50	15.80	3.18	8.06	3.00
BSE-S150	2	2	¾	¾	.44x.94	4.25	2.12	8.50	11.12	4.88	8.50	16.80	3.18	7.37	3.00
BSE-S200	2	2	¾	¾	.44x.94	4.25	2.12	8.50	11.12	4.88	8.50	17.20	3.18	7.37	3.00

\*Dimensions measured in inches

BSE-S

Water Systems

Sump and Sewage

Lawn and Sprinkler

Electric Motor Driven

Engine Driven

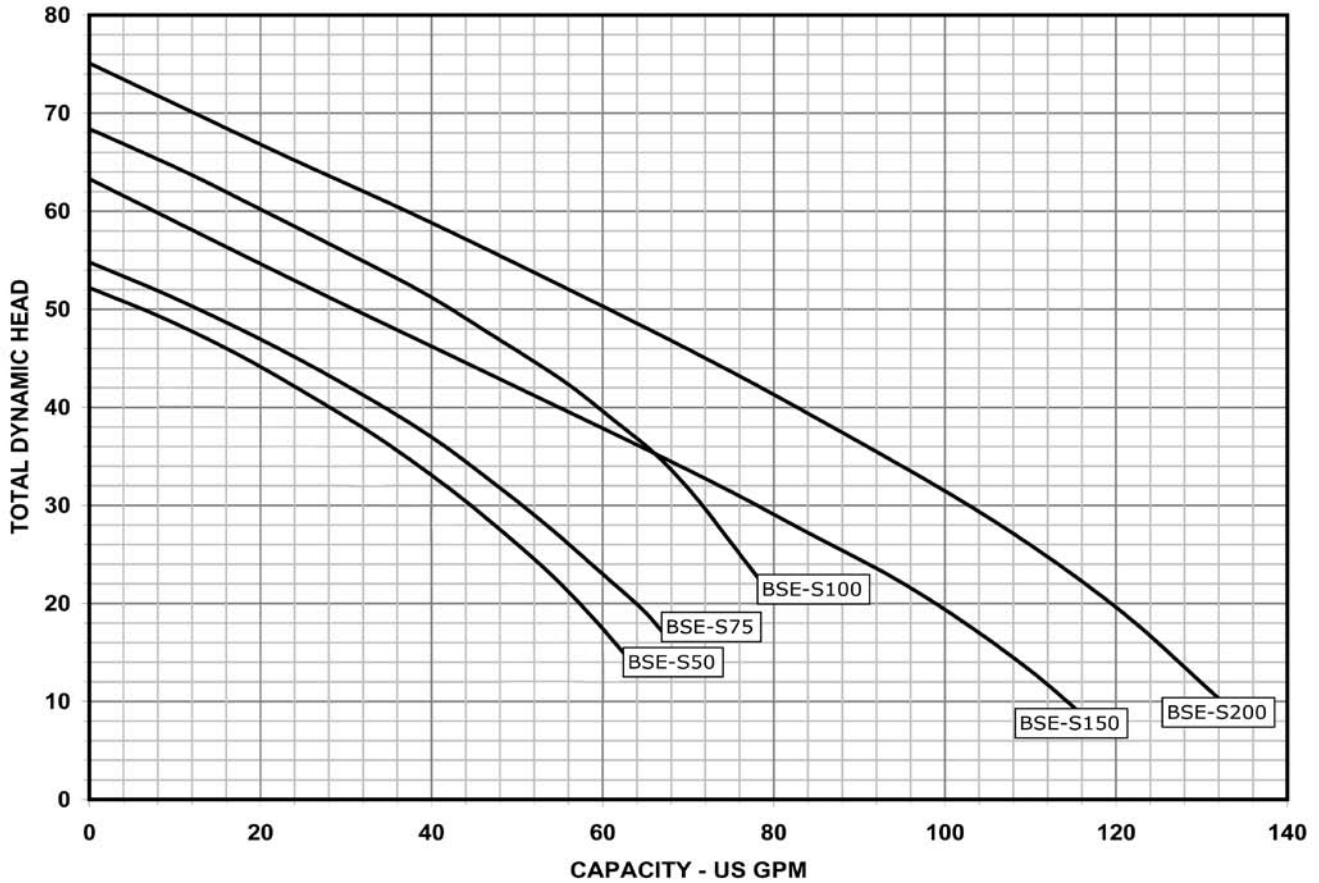
Frame Mount

Hand Pumps

Irrigation and Industrial

# ELECTRIC MOTOR DRIVEN SELF PRIMING

## Performance



PERFORMANCE CHART										
Model No.	RPM	HP	Total Head in Feet							
			20	30	40	50	60	70	80	90
Capacities in U.S. GPM										
BSE-S50	3450	½	55	46	32	10	0	-	-	-
BSE-S75		¾	65	50	35	10	0	-	-	-
BSE-S100		1	80	70	60	42	20	-	-	-
BSE-S150		1½	102	78	55	35	8	0	-	-
BSE-S200		2	126	103	80	58	32	10	0	-

BSE SERIES - LESS POWER KITS					
Model No.	Order No.	HP	Suct. NPT	Disch. NPT	Ship Wt. (lbs.)
BSE-50LP	615306	½	1¼"	1¼"	18
BSE-75LP	615316	¾	1¼"	1¼"	18
BSE-100LP	615326	1	1¼"	1¼"	18
BSE-150LP	615336	1½	2"	2"	18
BSE-200LP	615346	2	2"	2"	22

\*BSE Pump end kits (Less Power) use 56J C face motors.

BSE-S SERIES - ELECTRIC MOTOR DRIVEN - SELF PRIMING						
Model No.	Order No.	HP	Suct. NPT	Disch. NPT	Electrical Characteristics	Ship Wt. (lbs.)
BSE-S50	615631	½	1¼"	1¼"	1/60/115/230V Capacitor start	41
BSE-S75	615632	¾	1¼"	1¼"	1/60/115/230V Capacitor start	42
BSE-S100	615633	1	1¼"	1¼"	1/60/115/230V Capacitor start	46
BSE-S150	615634	1½	2"	2"	1/60/115/230V Capacitor start	52
BSE-S200	615635	2	2"	2"	1/60/115/230V Capacitor start	60

BSE-S

Water Systems

Sump and Sewage

Lawn and Sprinkler

Electric Motor Driven

Engine Driven

Frame Mount

Hand Pumps

Irrigation and Industrial