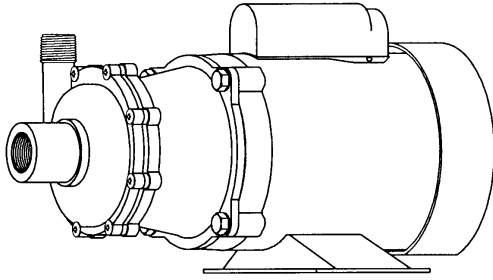




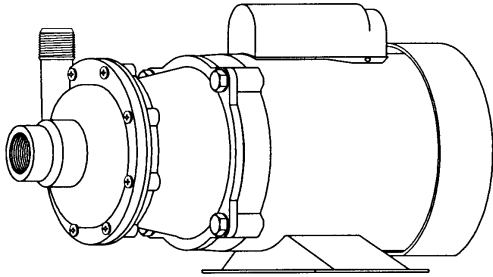
MARCH PUMPS

1819 PICKWICK AVE., GLENVIEW, IL 60026-1306, U.S.A
 PHONE: (847) 729-5300 - FAX: (847) 729-7062
 WWW.MARCHPUMP.COM

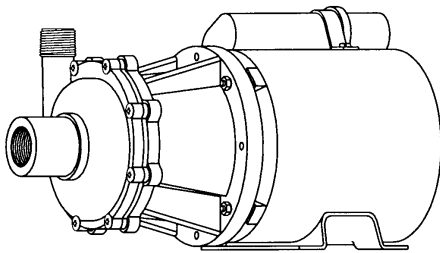
TE-5.5C-MD, TE-5.5C-MD-AC
 TE-5.5K-MD, TE-5.5K-MD-AC
 TE-5.5S-MD



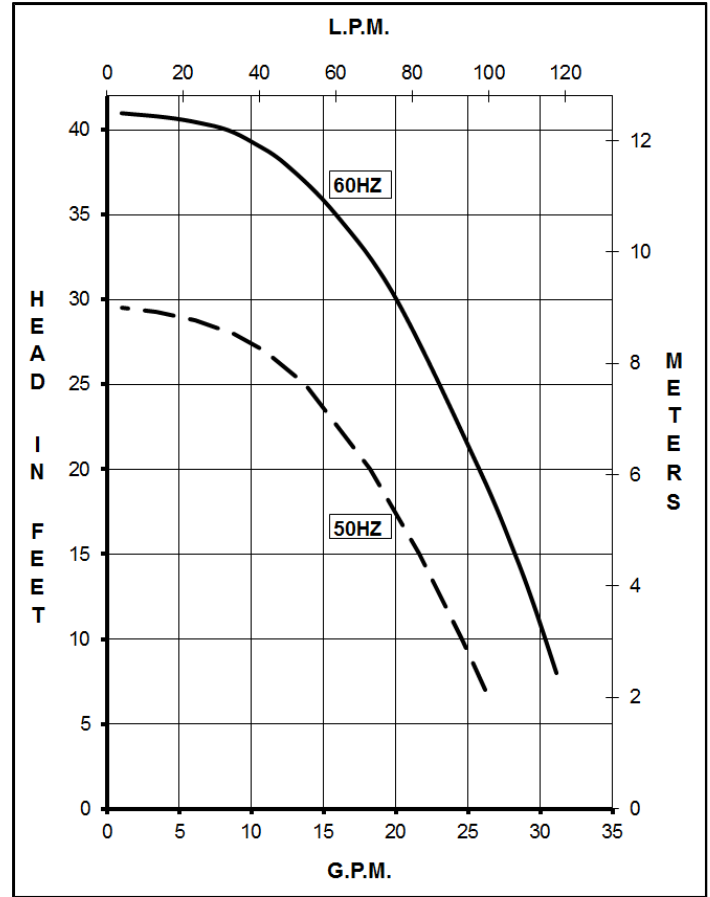
TE-5.5C-MD
 TE-5.5K-MD



TE-5.5S-MD



TE-5.5C-MD-AC
 TE-5.5K-MD-AC
 (Air Cooled Motor)



MODEL ABBREVIATIONS:

C = Polypropylene, K = Kynar
 S = Stainless Steel, MD = Magnetic Drive

DESCRIPTION:

Series 5.5 are centrifugal magnetic drive pumps, eliminating the need for a shaft seal. These pumps can be serviced with a screwdriver. Screws should be tightened in sequence and uniformly. Do not over tighten the screws or you may crush the plastic housing bosses. See the repair parts list for a breakdown of replacement parts.

OPERATION:

These pumps are not self-priming, lack a suction lift, and thus require a **flooded suction**. These pumps **cannot be run dry** because the impeller requires the liquid being pumped for lubrication. The direction of motor rotation should be clockwise when facing the inlet of the pump. For liquids with a specific gravity greater than water, have a higher viscosity, or for elevated temperatures, a trimmed impeller may be necessary. For application assistance, contact March Pump.

ELECTRICAL:

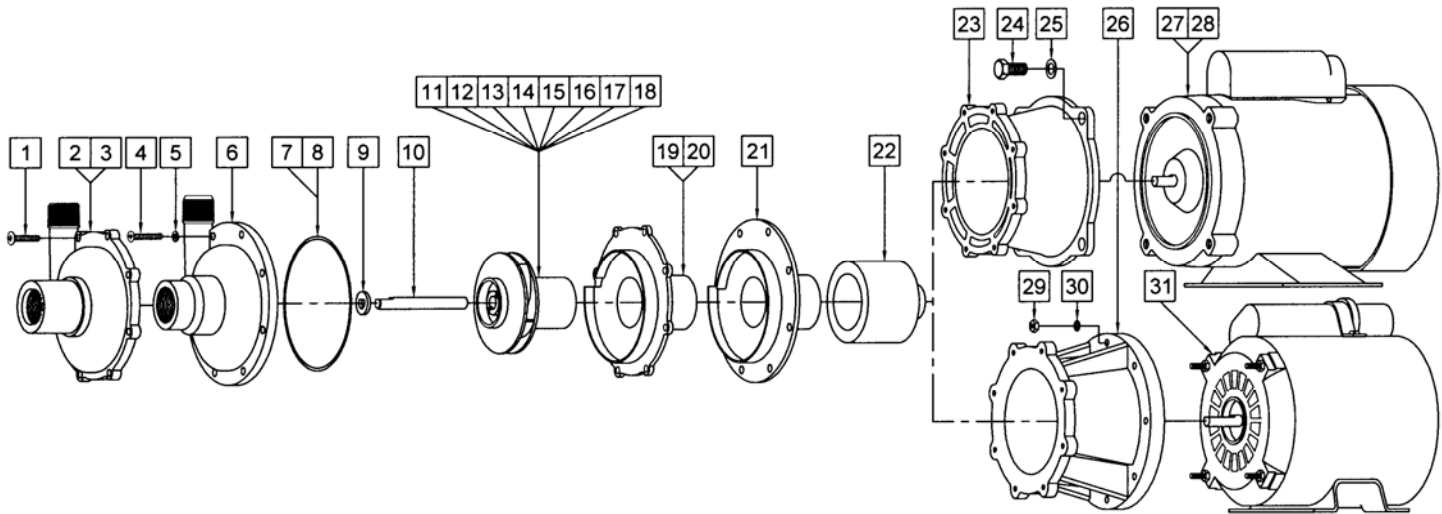
TE-5.5-MD-AC pumps are 115/230V, 1 phase, air cooled. TE-5.5-MD pumps are 115/230V, 1 phase or 230/460V, 3 phase, TEFC. The motors are U.L. listed and rated for continuous duty. Explosion proof and special voltage motors are available upon special order.

NOTES:

All specifications & data are based on pumping water & are intended as a guideline only. Specifications may vary with different motors.

SPECIFICATIONS			TE				
			5.5C-MD-AC	5.5K-MD-AC	5.5C-MD	5.5K-MD	5.5S-MD
Max Flow	50Hz	lpm	102		102		
	60Hz	gpm	30		30		
Max Head	50Hz	m	9		9		
	60Hz	ft (psi)	41 (17.7)		41 (17.7)		
Inlet			1" FPT		1" FPT		
Outlet			3/4" MPT		3/4" MPT		
Max Internal Pressure	psi		50	75	50	75	200
	bar		3.4	5	3.4	5	13
Max Liquid Temperature	°F		190	200	190	200	250
	°C		87	93	87	93	121
Packed Weight	kg/lbs		7/15.5	7.5/16	15.5/34.5	16/35	17.5/39
Motor Type			Air Cooled 1 Phase		TEFC 1 Phase		
50Hz	115V	Watts - Amps	281 - 2.9		290 - 4.4		
	230V	Watts - Amps	281 - 1.4		290 - 2.2		
		Kw - Rpm	0.149 - 2850		0.248 - 2850		
60Hz	115V	Watts - Amps	407 - 2.7		452 - 4.4		
	230V	Watts - Amps	407 - 1.4		452 - 2.2		
		Hp - Rpm	1/5 - 3450		1/3 - 3450		
Electrical Connection			Junction Box		Conduit Box		
Overall Pump Dimensions in	Height		6.95 / 17.6		7.79 / 19.7		
	Width		5.81 / 14.7		7.65 / 19.4		
	Inches / cm		12.89 / 32.7		14.25 / 36.1		
Motor Type			Air Cooled 1 Phase		TEFC 3 Phase		
50Hz	190V	Watts - Amps			350 - 1.2		
	380V	Watts - Amps			350 - 0.6		
		Kw - Rpm			0.186 - 2850		
60Hz	230V	Watts - Amps			425 - 1.2		
	460V	Watts - Amps			425 - 0.6		
		Hp - Rpm			1/3 - 3450		
Electrical Connection			Junction Box		Conduit Box		
Overall Pump Dimensions in	Height		6.95 / 17.6		7.34 / 18.6		
	Width		5.81 / 14.7		9.24 / 23.4		
	Inches / cm		12.89 / 32.7		15.07 / 38.2		

NOTE: When attaching the Drive Magnet (item 22) to the motor shaft, position the face of the Drive Magnet flush with the face of the Motor Bracket (item 23 or 26).



REPAIR PARTS LIST

ITEM	DESCRIPTION	MATERIAL	SIZE (Inches)	QTY.	PART #	TE-5.5C-MD-AC	TE-5.5K-MD-AC	TE-5.5C-MD	TE-5.5K-MD	TE-5.5S-MD
1	Screw (Truss Hd)	Stainless	#10-32 x 1 Lg	8	0135-0180-1000	S	S	S	S	
2	Front Housing	Polypropylene		1	0151-0027-1000	S		S		
3	Front Housing	Kynar		1	0151-0044-1000		S		S	
4	Screw	Stainless	#10-32 x 1-1/8 Lg	8	0135-0181-1000					S
5	Lock Washer	Stainless	#10	8	0151-0016-1000					S
6	Front Housing	316 Stainless Steel		1	0151-0002-0000					S
7	"O" Ring	Viton	3/32 CS x 4-7/16 OD	1	0153-0015-1000	S	S	S	S	S
8	"O" Ring	Viton/Teflon	3/32 CS x 4-7/16 OD	1	0153-0024-1000	O	O	O	O	O
9	Thrust Washer	Ceramic		1	0155-0009-1000	S	S	S	S	S
10	Shaft	Ceramic		1	0153-0007-1000	S	S	S	S	S
11	Impeller	Polypropylene		1	0151-0029-0500	S		S		O
12	Impeller w/Carbon Bushing	Polypropylene		1	0151-0029-0800	O		O		O
13	Impeller w/Mica Teflon Bushing	Polypropylene		1	0151-0029-1300	O		O		O
14	Impeller	Kynar		1	0151-0046-0300		S		S	O
15	Impeller w/Carbon Bushing	Kynar		1	0151-0046-0500		O		O	O
16	Impeller w/Mica Teflon Bushing	Kynar		1	0151-0046-1100		O		O	O
17	Impeller w/Carbon Bushing	316 Stainless		1	0151-0001-0400					S
18	Impeller w/Mica Teflon Bushing	316 Stainless		1	0151-0001-0800					O
19	Rear Housing w/Thrust Washer	Polypropylene/Ceramic		1	0151-0028-0100	S		S		
20	Rear Housing w/Thrust Washer	Kynar/Ceramic		1	0151-0045-0100		S		S	
21	Rear Housing	316 Stainless Steel		1	0151-0003-0000					S
22	Drive Magnet			1	0151-0061-0200	S	S	S	S	S
23	Motor Bracket	Plastic		1	0151-0014-0100			S	S	S
24	Screw	Stainless	3/8-16 x 3/4 Lg	4	0155-0017-1000			S	S	S
25	Washer	Stainless	3/8 ID x 5/8 OD	4	0155-0019-1000			S	S	S
26	Motor Bracket	Plastic		1	0151-0041-0100	S	S			
27	Motor, TEFC, 115/230V, 1 Phase			1	0151-0015-1000			S	S	S
28	Motor, TEFC, 230/460V, 3 Phase*			1	0151-0039-1000			S	S	S
29	Hex Nut	Brass	#8-32	4	0410-0039-1000	S	S			
30	Lock Washer	Stainless	#8	4	0620-0010-1000	S	S			
31	Motor, Air Cooled, 115/230V, 1 Phase			1	0175-0087-1000	S	S			
W1	Wet End Kit (Items: 1, 2, 7, 9, 10, 11, 19)	See Individual Items		1	0151-0069-0100	S		S		
W2	Wet End Kit (Items: 1, 3, 7, 9, 10, 14, 20)	See Individual Items		1	0151-0070-0100		S		S	

NOTE: Contact Factory for other materials and/or parts not listed.

*Not Shown

Legend: S = Standard, O = Optional

MATERIALS IN CONTACT WITH SOLUTION:

For TE-5.5C-MD, TE-5.5C-MD-AC: Polypropylene, Viton, Ceramic
 For TE-5.5K-MD, TE-5.5K-MD-AC: Kynar/Carbon Filled, Viton, Ceramic
 For TE-5.5S-MD: 316 Stainless Steel, Viton, Ceramic, Carbon

LIMITED WARRANTY: March pumps are guaranteed only against defects in workmanship or materials for a period of one year from date of manufacture pumping water. For the complete warranty and to register online go to www.marchpump.com/warranty-registration