



MARCH PUMPS

1819 PICKWICK AVE., GLENVIEW, IL 60026-1306, U.S.A
 PHONE: (847) 729-5300 - FAX: (847) 729-7062
 WWW.MARCHPUMP.COM

INSTRUCTIONS & REPAIR PARTS FOR MDX AND MDX-3



MODELS
 MDX- $\frac{1}{2}$
 MDX- $\frac{5}{8}$
 MDX-3 $\frac{1}{2}$
 MDX-3 $\frac{5}{8}$

RATINGS AND SPECIFICATIONS

Model No.	CONNECTORS		ELECTRICAL				G.P.H AT LISTED HEAD					Max. Head	P.S.I. Gage	DIMENSIONS			Pack Wt.		
	Inlet	Outlet	R.P.M.	H.z.	H.P.	Watts	Amps.	1 Ft.	3 Ft.	6 Ft.	9 Ft.			12 Ft.	15 Ft.	Ht.		Wd.	Lg.
MDX	$\frac{1}{2}$ " or $\frac{5}{8}$ "	$\frac{1}{2}$ " or $\frac{5}{8}$ "	1750	50-60	1/55	64	.85	360	300	210	0	0	0	7 Ft.	3.1 Lbs.	5"	3 $\frac{3}{4}$ "	7 $\frac{1}{4}$	5 $\frac{1}{2}$ Lbs.
MDX-3	O.D. Smooth	O.D. Smooth	3500		1/25	108	1.35	510	480	420	360	300	240	19 Ft.	8.3 Lbs.			7 $\frac{1}{2}$	6 Lbs.

PUMP CONSTRUCTION

March "Orbital" Magnetic Drive Pumps eliminate the conventional shaft seals found in most pumps. This means that there is no rotating seal to wear and allow the liquid being pumped to leak out. There are only two areas in this type construction that rotate and could wear out. One area is the motor shaft and bearings. The second are is the impeller rotating on a stationary spindle, and hence these are the only two areas where wearing can occur.

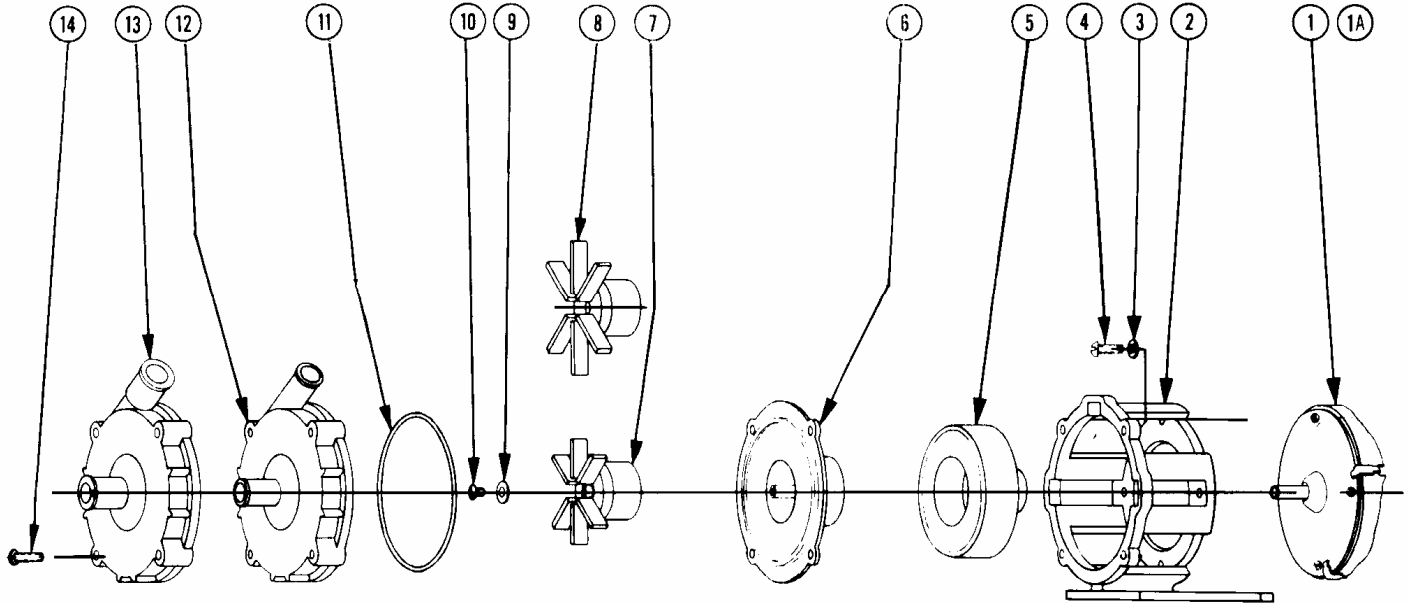
All parts can be easily serviced with the use of a screwdriver and replaced in the field if necessary. See the Repair Parts List for necessary replacement items.

PUMP MATERIALS

The plastic parts are molded out of glass filled polypropylene. The spindle housing 0802-0043-1000 is molded carbon filled PVDF plastic. The "O" rings are Buna N rubber. On the 3450 rpm pumps there is a type 316 stainless thrust screw and plastic thrust washer. The magnet is a glazed ceramic. For materials other than standard, and for plastic encapsulated impeller magnets, contact the factory.

ELECTRICAL CONNECTIONS AND RUNNING DRY

The motors are 115 volt, 50/60 Hz, 1 phase A.C.— 230 volt motors are available. Motors are all thermal overload protected and are UL recognized. The pumps should not be run dry for more than 60 seconds as the plastic impeller will squeal and bind onto the stationary spindle. The black and white lead should be connected to your power source. The green lead must be connected to the ground.



REPAIR PARTS LIST				
USED IN	ITEM	DESCRIPTION	QTY.	PART NO.
MDX	1	Motor – 1750 RPM – 115 Volts – 50/60 Hz	1	0135-0109-1000
MDX-3	1A	Motor – 3500 RPM – 115 Volts – 50/60 Hz	1	0135-0036-1000
All	2	Motor Bracket	1	0135-0168-0100
All	3	# 8 Int. Lock Washer	4	0620-0010-1000
All	4	# 8-32 x 1/2 Lg. Round Head Screw	4	0618-0027-1000
All	5	Drive Magnet Assembly (Molded)	1	0135-0126-0100
MDX/MDX-3	6	Shaft Housing	1	0802-0043-1000
MDX-3	7	Impeller & Magnet Assembly (3.500 RPM)	1	0135-0043-0100
MDX	8	Impeller & Magnet Assembly (1.750 RPM)	1	0135-0026-0100
MDX-3	9	# 8 I.D. x 7/16 O.D. Flat Washer	1	0802-0057-1000
MDX-3	10	# 8-32 x 1/4 Lg. Rd. Hd. Screw	1	0135-0042-1000
MDX/MDX-3	11	2-7/8 I.D. x 1/16 Thk. "O" Ring Buna	1	0135-0007-1000
MDX/MDX-3	12	Pump Housing 1/2" O.D. Inlet & Outlet	1	0135-0118-1000
MDX/MDX-3	13	Pump Housing 5/8" O.D. Inlet & Outlet	1	0135-0117-1000
All	14	Screws #10-32	4	0135-0180-1000

Contact factory for other materials and/or parts not listed.

LIMITED WARRANTY

March pumps are guaranteed only against defects in workmanship or materials for a period of one year from date of manufacture pumping water. On all other solutions, contact the factory for application assistance. March Pump Application Worksheet 750-130-10 is available for additional warranty information.