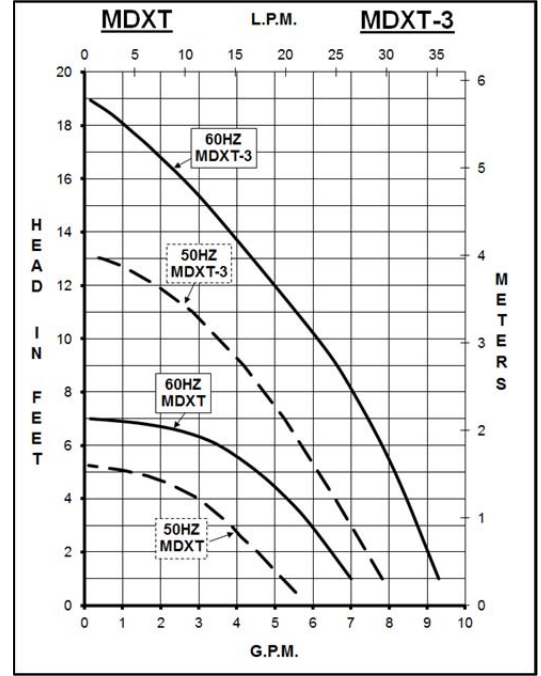
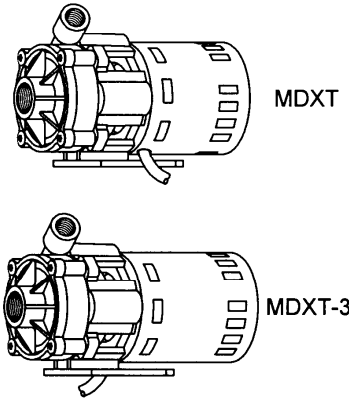
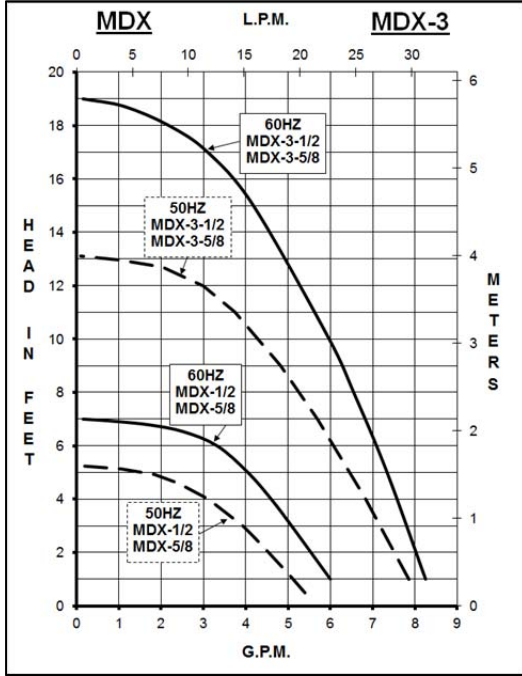
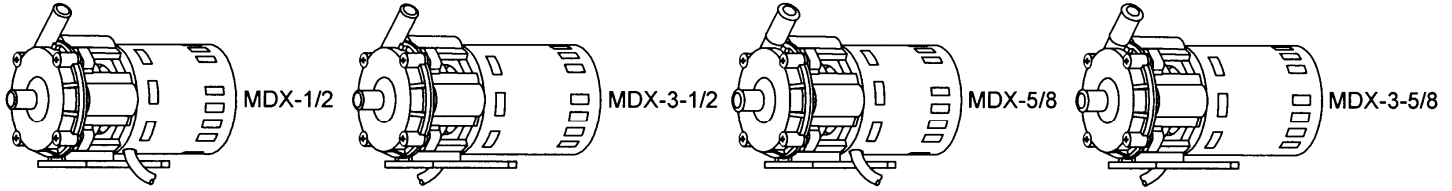




MARCH PUMPS

1819 PICKWICK AVE., GLENVIEW, IL 60026-1306, U.S.A
 PHONE: (847) 729-5300 - FAX: (847) 729-7062
 WWW.MARCHPUMP.COM

MDX-1/2, MDX-3 1/2
MDX-5/8, MDX-3 5/8
MDXT, MDXT-3



DESCRIPTION: Series MDX are centrifugal magnetic drive pumps, eliminating the need for a shaft seal. These pumps can be serviced with a screwdriver. See the repair parts list for a breakdown of replacement parts.

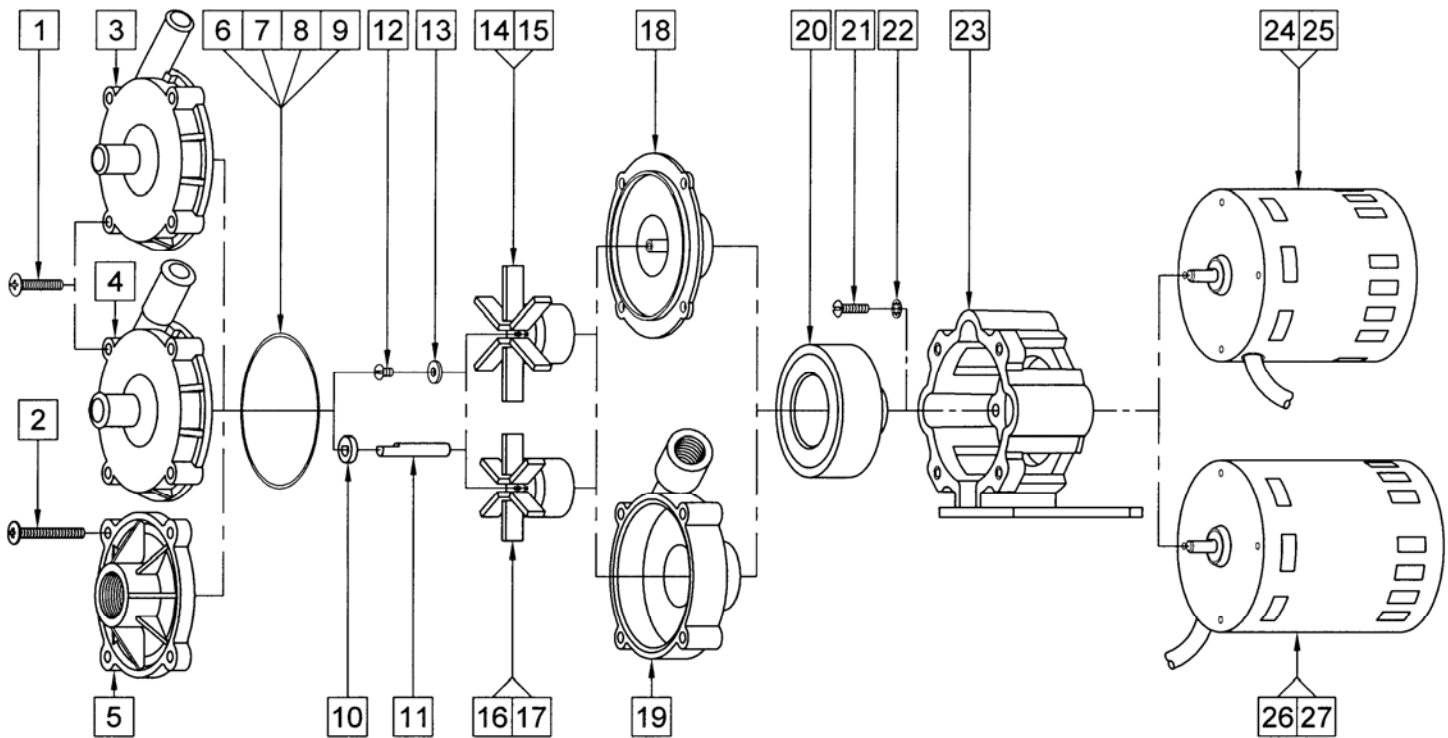
OPERATION: These pumps are not self-priming, lack a suction lift, and thus require a flooded suction. These pumps cannot be run dry because the impeller requires the liquid being pumped for lubrication. For application assistance, contact March Pump.

ELECTRICAL: Air cooled motors are available in different electrical configurations such as 115V 60Hz, 115V 50/60Hz, and 230V 50/60Hz, 1 phase. The motors are U.L. listed and rated as continuous duty.

NOTES: All specifications & data are based on pumping water & are intended as a guideline only. Specifications may vary with different motors.

LIMITED WARRANTY: March pumps are guaranteed only against defects in workmanship or materials for a period of one year from date of manufacture pumping water. For the complete warranty and to register online go to www.marchpump.com/warranty-registration

| SPECIFICATIONS | | | MDX-1/2 | MDX-5/8 | MDX-3-1/2 | MDX-3-5/8 | MDXT | MDXT-3 |
|----------------------------|------|--------------|---------------------------|---------|---------------------------|-----------|--------------------|--------------|
| Max Flow | 50Hz | lpm | 22 | | 30 | | 22 | 30 |
| | 60Hz | gpm | 6 | | 8.5 | | 7 | 8.5 |
| Max Head | 50Hz | m | 1.6 | | 4 | | 1.6 | 4 |
| | 60Hz | ft (psi) | 7 (3.0) | | 19 (8.2) | | 7 (3) | 19 (8.2) |
| Inlet | | | 1/2" OD | 5/8" OD | 1/2" OD | 5/8" OD | 1/2" FPT | |
| Outlet | | | 1/2" OD | 5/8" OD | 1/2" OD | 5/8" OD | 3/8" FPT | |
| Max Internal Pressure | psi | | 50 | | 50 | | 50 | |
| | bar | | 3.4 | | 3.4 | | 3.4 | |
| Max Liquid Temperature | °F | | 190 | | 190 | | 190 | |
| | °C | | 87 | | 87 | | 87 | |
| Packed Weight | | | 2.5/5.5 | | 3/6 | | 2.5/5.5 | 3/6 |
| Motor Type | | | Air Cooled 1 Phase | | Air Cooled 1 Phase | | Air Cooled 1 Phase | |
| 50Hz | 115V | Watts - Amps | | | 118 - 1.55 | | 118 - 1.55 | |
| | | Kw - Rpm | | | 0.029 - 2850 | | 0.029 - 2850 | |
| 60Hz | 115V | Watts - Amps | 59 - 0.94 | | 115 - 1.55 | | 59 - 0.94 | 115 - 1.55 |
| | | Hp - Rpm | 1/55 - 1750 | | 1/25 - 3450 | | 1/55 - 1750 | 1/24 - 3450 |
| Electrical Connection | | | 3 ft (0.9 m) Cord | | 3 ft (0.9 m) Cord | | 3 ft (0.9 m) Cord | |
| Overall Pump Dimensions in | | | 4.94 / 12.5 4.97 / 12.6 | | 4.94 / 12.5 4.97 / 12.6 | | 4.86 / 12.3 | |
| Inches / cm | | | 3.88 / 9.8 | | 3.88 / 9.8 | | 3.88 / 9.8 | |
| Length | | | 7.09 / 18.0 | | 7.69 / 19.5 | | 7.14 / 18.1 | 7.75 / 19.6 |
| Motor Type | | | Air Cooled 1 Phase | | Air Cooled 1 Phase | | Air Cooled 1 Phase | |
| 50Hz | 230V | Watts - Amps | 64 - 0.5 | | 120 - 0.7 | | 64 - 0.5 | 120 - 0.7 |
| | | Kw - Rpm | 0.018 - 1300 | | 0.029 - 2850 | | 0.018 - 1300 | 0.029 - 2850 |
| 60Hz | 230V | Watts - Amps | 59 - 0.45 | | 114 - 0.7 | | 59 - 0.45 | 114 - 0.7 |
| | | Hp - Rpm | 1/40 - 1750 | | 1/25 - 3450 | | 1/40 - 1750 | 1/25 - 3450 |
| Electrical Connection | | | 3 ft (0.9 m) Cord | | 3 ft (0.9 m) Cord | | 3 ft (0.9 m) Cord | |
| Overall Pump Dimensions in | | | 4.94 / 12.5 4.97 / 12.6 | | 4.94 / 12.5 4.97 / 12.6 | | 4.86 / 12.3 | |
| Inches / cm | | | 3.88 / 9.8 | | 3.88 / 9.8 | | 3.88 / 9.8 | |
| Length | | | 7.34 / 18.6 | | 8.11 / 20.5 | | 7.39 / 18.7 | 8.17 / 20.7 |



REPAIR PARTS LIST

| ITEM | DESCRIPTION | MATERIAL | SIZE (Inches) | QTY | PART # | MDX-1/2 | MDX-5/8 | MDX-3-1/2 | MDX-3-5/8 | MDXT | MDXT-3 |
|------|--------------------------------|------------------------------|-------------------------|-----|----------------|---------|---------|-----------|-----------|------|--------|
| 1 | Screw | Stainless Steel | #10-32 x 1 Lg. | 4 | 0135-0180-1000 | S | S | S | S | | |
| 2 | Screw | Stainless Steel | #10-32 x 1-1/2 Lg. | 4 | 0823-0008-1000 | | | | | S | S |
| 3 | Front Housing | Polypropylene | 1/2 O.D. Inlet & Outlet | 1 | 0135-0118-1000 | S | O | S | O | | |
| 4 | Front Housing | Polypropylene | 5/8 O.D. Inlet & Outlet | 1 | 0135-0117-1000 | O | S | O | S | | |
| 5 | Cover | Polypropylene | 1/2 FPT Inlet | 1 | 0135-0172-1000 | | | | | S | S |
| 6 | "O" Ring | Buna N | 1/16 CS x 3 OD | 1 | 0135-0007-1000 | S | S | S | S | | |
| 7 | "O" Ring | Viton | 1/16 CS x 3 OD | 1 | 0135-0023-1000 | O | O | O | O | | |
| 8 | "O" Ring | Buna N | 1/16 CS x 2-7/8 OD | 1 | 0135-0039-1000 | | | | | S | S |
| 9 | "O" Ring | Viton | 1/16 CS x 2-7/8 OD | 1 | 0135-0046-1000 | | | | | O | O |
| 10 | Thrust Washer | Ceramic | | 1 | 0130-0028-1000 | | | | | S | S |
| 11 | Shaft | Ceramic | | 1 | 0809-0160-1000 | | | | | S | S |
| 12 | Screw | Stainless Steel | #8-32 x 1/4 Lg. | 1 | 0135-0042-1000 | | | S | S | | |
| 13 | Thrust Washer | Ryton/Teflon/Carbon | | 1 | 0802-0057-1000 | | | S | S | | |
| 14 | Impeller | Polypropylene/Ceramic Magnet | 2.625 Dia. | 1 | 0135-0026-0100 | S | S | | | S | |
| 15 | Impeller Encapsulated | Polypropylene | 2.625 Dia. | 1 | 0135-0133-0200 | O | O | | | O | |
| 16 | Impeller | Polypropylene/Ceramic Magnet | 2.062 Dia. | 1 | 0135-0043-0100 | | | S | S | | S |
| 17 | Impeller Encapsulated | Polypropylene | 2.062 Dia. | 1 | 0135-0130-0200 | | | O | O | | O |
| 18 | Rear Housing | Kynar/Carbon Filled | | 1 | 0802-0043-1000 | S | S | S | S | | |
| 19 | Rear Housing | Polypropylene | 3/8 FPT Outlet | 1 | 0135-0171-1000 | | | | | S | S |
| 20 | Drive Magnet | | | 1 | 0135-0126-0100 | S | S | S | S | S | S |
| 21 | Screw | Stainless Steel | #8-32 x 5/8 Lg. | 4 | 0618-0027-1000 | S | S | S | S | S | S |
| 22 | Lock Washer | Stainless Steel | #8 | 4 | 0620-0010-1000 | S | S | S | S | S | S |
| 23 | Motor Bracket | Plastic | | 1 | 0135-0168-0100 | S | S | S | S | S | S |
| 24 | Motor, 1750 RPM, 115V, 60Hz | | | 1 | 0135-0109-1000 | S | S | | | S | |
| 25 | Motor, 1750 RPM, 230V, 50/60Hz | | | 1 | 0135-0112-1000 | S | S | | | S | |
| 26 | Motor, 3450 RPM, 115V, 50/60Hz | | | 1 | 0135-0036-1000 | | | S | S | | S |
| 27 | Motor, 3450 RPM, 230V, 50/60Hz | | | 1 | 0135-0037-1000 | | | S | S | | S |

NOTE: Contact Factory for other materials and/or parts not listed.

Legend: S = Standard, O = Optional

NOTE:

When attaching the Drive Magnet (Item 20) to the motor shaft, position the face of the Drive Magnet 1/16 inch below the face of the Motor Bracket (Item 23).

MATERIALS IN CONTACT WITH SOLUTION:

MDX: Polypropylene, Kynar/Carbon Filled, Buna N, Ceramic Magnet

MDX-3: Polypropylene, Kynar/Carbon Filled, Ryton/Teflon/Carbon, Stainless Steel, Buna N, Ceramic Magnet

MDXT: Polypropylene, Ceramic, Buna N, Ceramic Magnet

MDXT-3: Polypropylene, Ceramic, Buna N, Ceramic Magnet