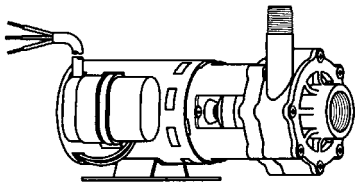




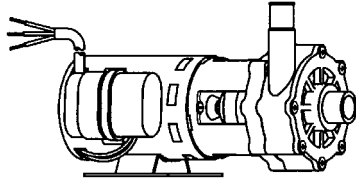
MARCH PUMPS

1819 PICKWICK AVE., GLENVIEW, IL 60026-1306, U.S.A
 PHONE: (847) 729-5300 - FAX: (847) 729-7062
 WWW.MARCHPUMP.COM

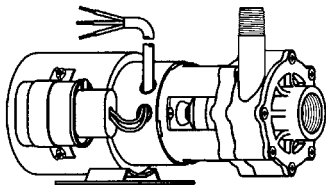
AC-4C-MD, BC-4C-MD
 AC-4A-MD, BC-4A-MD
 BC-4K-MD



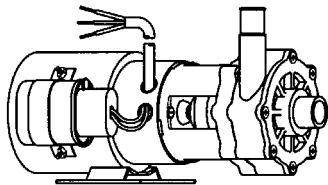
AC-4C-MD



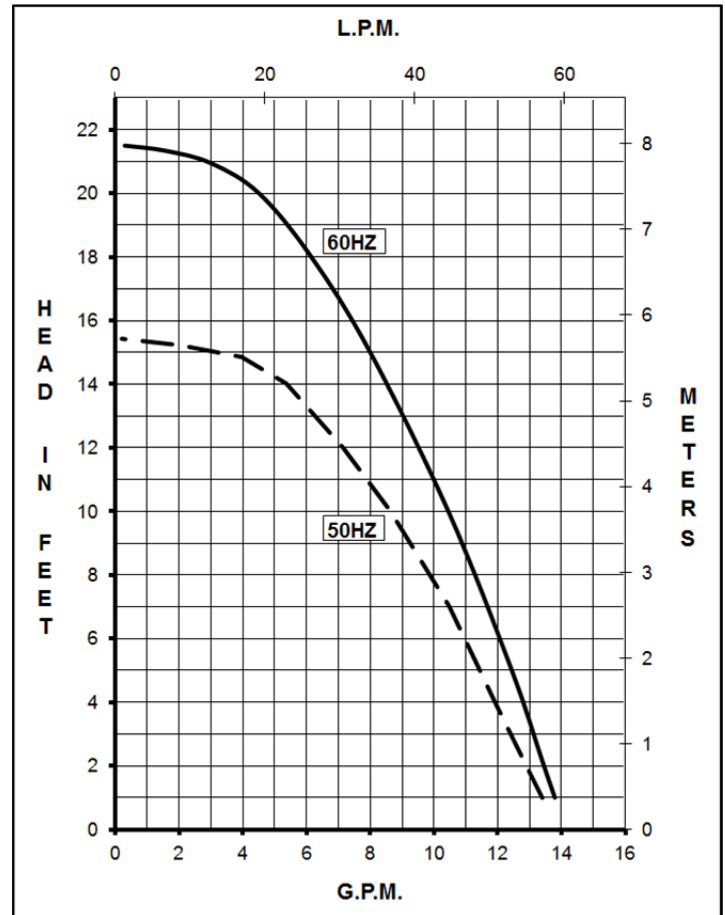
AC-4A-MD



BC-4C-MD & BC-4K-MD



BC-4A-MD



MODEL ABBREVIATIONS:

AC = Air Cooled Motor, BC = Blast Cooled Motor
 C/K = Threaded Inlet/Outlet, A = Smooth Inlet/Outlet,
 K = Kynar, C/A = Polypropylene
 MD = Magnetic Drive
 BC models have an encapsulated impeller magnet.

DESCRIPTION:

Series 4 are centrifugal magnetic drive pumps, eliminating the need for a shaft seal. These pumps can be serviced with a screwdriver. See the repair parts list for a breakdown of replacement parts.

OPERATION:

These pumps are not self-priming, lack a suction lift, and thus require a **flooded suction**. These pumps **cannot be run dry** because the impeller requires the liquid being pumped for lubrication. For liquids with a specific gravity greater than water, have a higher viscosity, or for elevated temperatures, a trimmed impeller may be necessary. For application assistance, contact March Pump.

ELECTRICAL:

Motors are available in different electrical configurations such as 115V 50/60Hz, and 230V 50/60Hz, 1 phase. The AC-4-MD motor is open air cooled. The BC-4-MD motor is blast cooled. The motors are U.L. listed and rated for continuous duty.

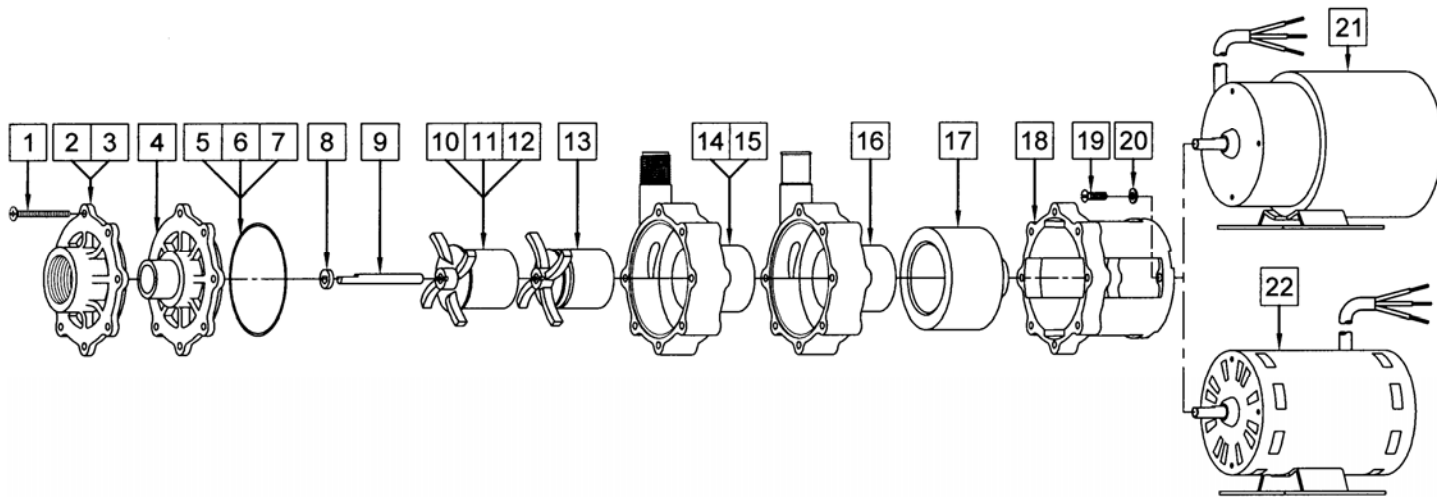
NOTES:

All specifications & data are based on pumping water & are intended as a guideline only. Specifications may vary with different motors.

LIMITED WARRANTY:

March pumps are guaranteed only against defects in workmanship or materials for a period of one year from date of manufacture pumping water. For the complete warranty and to register online go to www.marchpump.com/warranty-registration

| SPECIFICATIONS | | | AC-4C-MD | AC-4A-MD | BC-4C-MD | BC-4A-MD | BC-4K-MD |
|----------------------------|--------|--------------|--------------------|--------------|----------------------|--------------|--------------|
| Max Flow | 50Hz | lpm | 50 | | 50 | | |
| | 60Hz | gpm | 14 | | 14 | | |
| Max Head | 50Hz | m | 4.7 | | 4.7 | | |
| | 60Hz | ft (psi) | 21.5 (9.3) | | 21.5 (9.3) | | |
| Inlet | | | 1" FPT | 1" OD | 1" FPT | 1" OD | 1" FPT |
| Outlet | | | 1/2" MPT | 3/4" OD | 1/2" MPT | 3/4" OD | 1/2" MPT |
| Max Internal Pressure | psi | | 50 | | 50 | | 75 |
| | bar | | 3.4 | | 3.4 | | 5 |
| Max Liquid Temperature | °F | | 190 | | 190 | | 200 |
| | °C | | 87 | | 87 | | 93 |
| Packed Weight | | | 3.8/8.5 | | 4.5/10 | | |
| Motor Type | | | Air Cooled 1 Phase | | Blast Cooled 1 Phase | | |
| 50Hz | 115V | Watts - Amps | 121 - 1.75 | | 125 - 1.9 | | |
| | | Kw - Rpm | 0.062 - 2850 | | 0.074 - 2850 | | |
| 60Hz | 115V | Watts - Amps | 172 - 1.75 | | 179 - 1.9 | | |
| | | Hp - Rpm | 1/12 - 3450 | | 1/10 - 3450 | | |
| Electrical Connection | | | 3 ft (0.9 m) Cord | | 3 ft (0.9 m) Cord | | |
| Overall Pump Dimensions in | Height | | 5.57 / 14.1 | | 5.65 / 14.1 | | |
| | Width | | 5.11 / 12.9 | | 5.36 / 13.6 | | |
| | Length | | 9.77 / 24.8 | 10.34 / 26.2 | 10.18 / 25.8 | 10.74 / 27.2 | 10.18 / 25.8 |
| Motor Type | | | Air Cooled 1 Phase | | Blast Cooled 1 Phase | | |
| 50Hz | 230V | Watts - Amps | 126 - 0.75 | | 121 - 0.75 | | |
| | | Kw - Rpm | 0.062 - 2850 | | 0.074 - 2850 | | |
| 60Hz | 230V | Watts - Amps | 165 - 0.75 | | 178 - 0.75 | | |
| | | Hp - Rpm | 1/12 - 3450 | | 1/10 - 3450 | | |
| Electrical Connection | | | 3 ft (0.9 m) Cord | | 3 ft (0.9 m) Cord | | |
| Overall Pump Dimensions in | Height | | 5.57 / 14.1 | | 5.65 / 14.1 | | |
| | Width | | 5.07 / 12.8 | | 5.36 / 13.6 | | |
| | Length | | 10.09 / 25.6 | 10.65 / 27.0 | 10.18 / 25.8 | 10.74 / 27.2 | 10.18 / 25.8 |



NOTE:

When attaching the Drive Magnet (item 17) to the motor shaft, position the face of the Drive Magnet 1/16 inch below the face of the Motor Bracket (item 18).

REPAIR PARTS LIST

| ITEM | DESCRIPTION | MATERIAL | SIZE (Inches) | QTY. | PART # | AC | | BC | | |
|------|--|------------------------------|---------------------|------|----------------------------------|-------|-------|-------|-------|-------|
| | | | | | | 4C-MD | 4A-MD | 4C-MD | 4A-MD | 4K-MD |
| 1 | Screw | Stainless Steel | #8-32 x 1-3/4 Lg. | 7 | 0150-0021-1000 | S | S | S | S | S |
| 2 | Cover | Polypropylene | 1 FPT Inlet | 1 | 0150-0032-1000 | S | O | S | O | |
| 3 | Cover | Kynar | 1 FPT Inlet | 1 | 0150-0124-1000 | | | | | S |
| 4 | Cover | Polypropylene | 1 OD Inlet | 1 | 0150-0150-1000 | O | S | O | S | |
| 5 | "O" Ring | Buna-N | 1/16 CS x 3 OD | 1 | 0135-0007-1000 | S | S | O | O | O |
| 6 | "O" Ring | Viton | 1/16 CS x 3 OD | 1 | 0135-0023-1000 | O | O | S | S | S |
| 7 | "O" Ring | Viton/Teflon | 0.070 CS x 3-1/8 OD | 1 | 0150-0171-1000 | O | O | O | O | O |
| 8 | Thrust Washer | Ceramic | | 1 | 0130-0028-1000 | S | S | S | S | S |
| 9 | Shaft | Ceramic | | 1 | 0130-0024-1000 | S | S | S | S | S |
| 10 | Encapsulated Impeller | Polypropylene | | 1 | 0145-0033-0200 | O | O | S | S | |
| 11 | Encapsulated Impeller | Kynar | | 1 | 0145-0039-0200 | | | | | S |
| 12 | Encapsulated Impeller w/Bushing | Polypropylene/Carbon | | 1 | 0145-0033-0300 | | | O | O | |
| 13 | Impeller | Polypropylene/Ceramic Magnet | | 1 | 0145-0011-0100 | S | S | O | O | |
| 14 | Rear Housing w/Thrust Washer | Polypropylene/Ceramic | 1/2 MPT Outlet | 1 | 0150-0031-0100 | S | O | S | O | |
| 15 | Rear Housing w/Thrust Washer | Kynar/Ceramic | 1/2 MPT Outlet | 1 | 0150-0123-0100 | | | | | S |
| 16 | Rear Housing w/Thrust Washer | Polypropylene/Ceramic | 3/4 OD Outlet | 1 | 0150-0159-0100 | O | S | O | S | |
| 17 | Drive Magnet | | | 1 | 0145-0027-0100 | S | S | S | S | S |
| 18 | Motor Bracket | Plastic | | 1 | 0145-0010-1000 | S | S | S | S | S |
| 19 | Screw | Stainless Steel | #8-32 x 5/8 Lg. | 4 | 0618-0027-1000 | S | S | S | S | S |
| 20 | Washer Flat | Stainless Steel | #8 | 4 | 0858-0004-1000 | S | S | S | S | S |
| 21 | BC Motor, 115V, 50/60Hz BC Motor, 230V, 50/60Hz | | | 1 | 0145-0035-1000 0145-0036-1000 | O | O | S | S | S |
| 22 | AC Motor, 115V, 50/60Hz AC Motor, 230V, 50/60Hz | | | 1 | 0145-0012-1000 0145-0029-1000 | S | S | O | O | O |

NOTE: Contact Factory for other materials and/or parts not listed.

Legend: S = Standard, O = Optional

MATERIALS IN CONTACT WITH SOLUTION:

AC-4C/4A-MD: Polypropylene, Buna N, Ceramic, Ceramic Magnet

BC-4C/4A-MD: Polypropylene, Viton, Ceramic

BC-4K-MD: Kynar/Carbon Filled, Viton, Ceramic