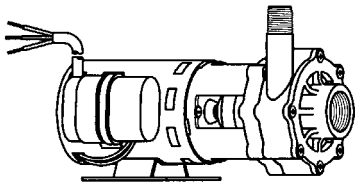




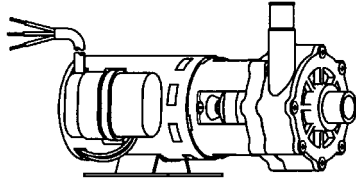
# MARCH PUMPS

1819 PICKWICK AVE., GLENVIEW, IL 60026-1306, U.S.A  
 PHONE: (847) 729-5300 - FAX: (847) 729-7062  
 WWW.MARCHPUMP.COM

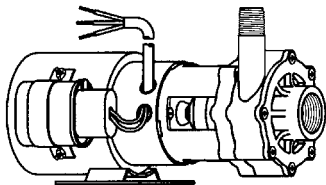
AC-4C-MD, BC-4C-MD  
 AC-4A-MD, BC-4A-MD  
 BC-4K-MD



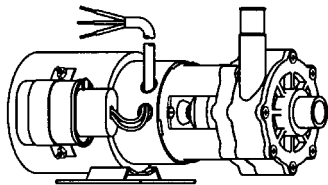
AC-4C-MD



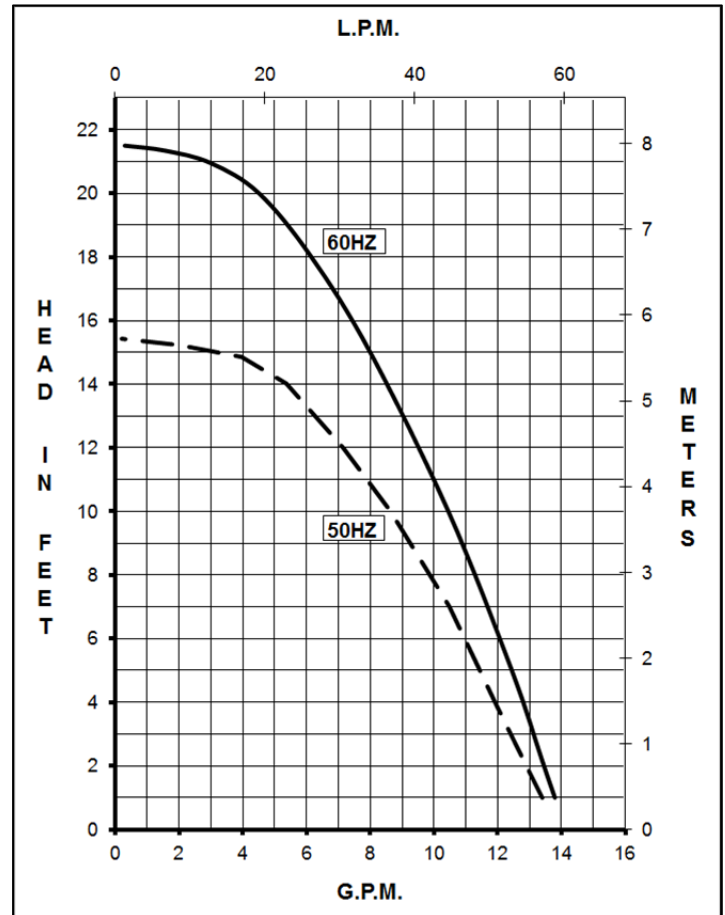
AC-4A-MD



BC-4C-MD & BC-4K-MD



BC-4A-MD



**MODEL ABBREVIATIONS:**

AC = Air Cooled Motor, BC = Blast Cooled Motor  
 C/K = Threaded Inlet/Outlet, A = Smooth Inlet/Outlet,  
 K = Kynar, C/A = Polypropylene  
 MD = Magnetic Drive  
 BC models have an encapsulated impeller magnet.

**DESCRIPTION:**

Series 4 are centrifugal magnetic drive pumps, eliminating the need for a shaft seal. These pumps can be serviced with a screwdriver. See the repair parts list for a breakdown of replacement parts.

**OPERATION:**

These pumps are not self-priming, lack a suction lift, and thus require a **flooded suction**. These pumps **cannot be run dry** because the impeller requires the liquid being pumped for lubrication. For liquids with a specific gravity greater than water, have a higher viscosity, or for elevated temperatures, a trimmed impeller may be necessary. For application assistance, contact March Pump.

**ELECTRICAL:**

Motors are available in different electrical configurations such as 115V 50/60Hz, and 230V 50/60Hz, 1 phase. The AC-4-MD motor is open air cooled. The BC-4-MD motor is blast cooled. The motors are U.L. listed and rated for continuous duty.

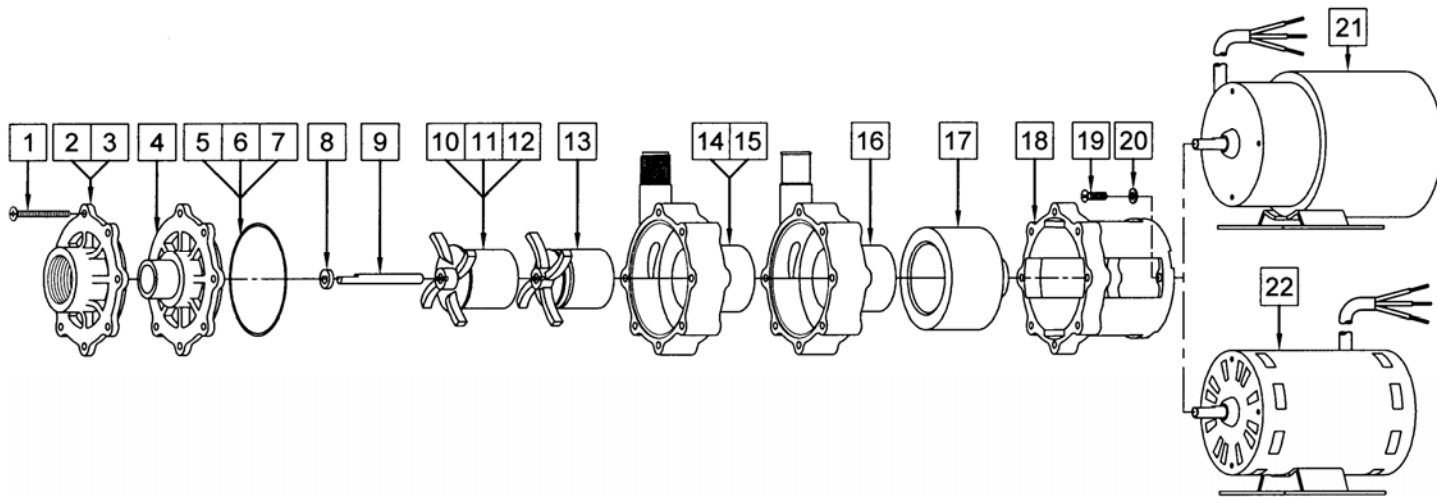
**NOTES:**

All specifications & data are based on pumping water & are intended as a guideline only. Specifications may vary with different motors.

**LIMITED WARRANTY:**

March pumps are guaranteed only against defects in workmanship or materials for a period of one year from date of manufacture pumping water. For the complete warranty and to register online go to [www.marchpump.com/warranty-registration](http://www.marchpump.com/warranty-registration)

SPECIFICATIONS			AC-4C-MD	AC-4A-MD	BC-4C-MD	BC-4A-MD	BC-4K-MD
Max Flow	50Hz	lpm	50		50		
	60Hz	gpm	14		14		
Max Head	50Hz	m	4.7		4.7		
	60Hz	ft (psi)	21.5 (9.3)		21.5 (9.3)		
Inlet			1" FPT	1" OD	1" FPT	1" OD	1" FPT
Outlet			1/2" MPT	3/4" OD	1/2" MPT	3/4" OD	1/2" MPT
Max Internal Pressure	psi		50		50		75
	bar		3.4		3.4		5
Max Liquid Temperature	°F		190		190		200
	°C		87		87		93
Packed Weight		kg/lbs	3.8/8.5		4.5/10		
Motor Type			Air Cooled 1 Phase		Blast Cooled 1 Phase		
50Hz	115V	Watts - Amps	121 - 1.75		125 - 1.9		
		Kw - Rpm	0.062 - 2850		0.074 - 2850		
60Hz	115V	Watts - Amps	172 - 1.75		179 - 1.9		
		Hp - Rpm	1/12 - 3450		1/10 - 3450		
Electrical Connection			3 ft (0.9 m) Cord		3 ft (0.9 m) Cord		
Overall Pump Dimensions in	Height		5.57 / 14.1		5.65 / 14.1		
	Width		5.11 / 12.9		5.36 / 13.6		
	Inches / cm		9.77 / 24.8	10.34 / 26.2	10.18 / 25.8	10.74 / 27.2	10.18 / 25.8
Motor Type			Air Cooled 1 Phase		Blast Cooled 1 Phase		
50Hz	230V	Watts - Amps	126 - 0.75		121 - 0.75		
		Kw - Rpm	0.062 - 2850		0.074 - 2850		
60Hz	230V	Watts - Amps	165 - 0.75		178 - 0.75		
		Hp - Rpm	1/12 - 3450		1/10 - 3450		
Electrical Connection			3 ft (0.9 m) Cord		3 ft (0.9 m) Cord		
Overall Pump Dimensions in	Height		5.57 / 14.1		5.65 / 14.1		
	Width		5.07 / 12.8		5.36 / 13.6		
	Inches / cm		10.09 / 25.6	10.65 / 27.0	10.18 / 25.8	10.74 / 27.2	10.18 / 25.8



**NOTE:**

When attaching the Drive Magnet (item 17) to the motor shaft, position the face of the Drive Magnet 1/16 inch below the face of the Motor Bracket (item 18).

**REPAIR PARTS LIST**

ITEM	DESCRIPTION	MATERIAL	SIZE (Inches)	QTY.	PART #	AC		BC		
						4C-MD	4A-MD	4C-MD	4A-MD	4K-MD
1	Screw	Stainless Steel	#8-32 x 1-3/4 Lg.	7	0150-0021-1000	S	S	S	S	S
2	Cover	Polypropylene	1 FPT Inlet	1	0150-0032-1000	S	O	S	O	
3	Cover	Kynar	1 FPT Inlet	1	0150-0124-1000					S
4	Cover	Polypropylene	1 OD Inlet	1	0150-0150-1000	O	S	O	S	
5	"O" Ring	Buna-N	1/16 CS x 3 OD	1	0135-0007-1000	S	S	O	O	O
6	"O" Ring	Viton	1/16 CS x 3 OD	1	0135-0023-1000	O	O	S	S	S
7	"O" Ring	Viton/Teflon	0.070 CS x 3-1/8 OD	1	0150-0171-1000	O	O	O	O	O
8	Thrust Washer	Ceramic		1	0130-0028-1000	S	S	S	S	S
9	Shaft	Ceramic		1	0130-0024-1000	S	S	S	S	S
10	Encapsulated Impeller	Polypropylene		1	0145-0033-0200	O	O	S	S	
11	Encapsulated Impeller	Kynar		1	0145-0039-0200					S
12	Encapsulated Impeller w/Bushing	Polypropylene/Carbon		1	0145-0033-0300			O	O	
13	Impeller	Polypropylene/Ceramic Magnet		1	0145-0011-0100	S	S	O	O	
14	Rear Housing w/Thrust Washer	Polypropylene/Ceramic	1/2 MPT Outlet	1	0150-0031-0100	S	O	S	O	
15	Rear Housing w/Thrust Washer	Kynar/Ceramic	1/2 MPT Outlet	1	0150-0123-0100					S
16	Rear Housing w/Thrust Washer	Polypropylene/Ceramic	3/4 OD Outlet	1	0150-0159-0100	O	S	O	S	
17	Drive Magnet			1	0145-0027-0100	S	S	S	S	S
18	Motor Bracket	Plastic		1	0145-0010-1000	S	S	S	S	S
19	Screw	Stainless Steel	#8-32 x 5/8 Lg.	4	0618-0027-1000	S	S	S	S	S
20	Washer Flat	Stainless Steel	#8	4	0858-0004-1000	S	S	S	S	S
21	BC Motor, 115V, 50/60Hz BC Motor, 230V, 50/60Hz			1	0145-0035-1000 0145-0036-1000	O	O	S	S	S
22	AC Motor, 115V, 50/60Hz AC Motor, 230V, 50/60Hz			1	0145-0012-1000 0145-0029-1000	S	S	O	O	O

NOTE: Contact Factory for other materials and/or parts not listed.

Legend: S = Standard, O = Optional

**MATERIALS IN CONTACT WITH SOLUTION:**

AC-4C/4A-MD: Polypropylene, Buna N, Ceramic, Ceramic Magnet

BC-4C/4A-MD: Polypropylene, Viton, Ceramic

BC-4K-MD: Kynar/Carbon Filled, Viton, Ceramic