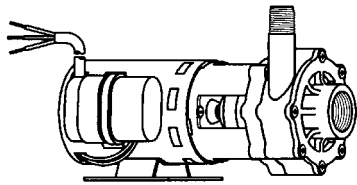




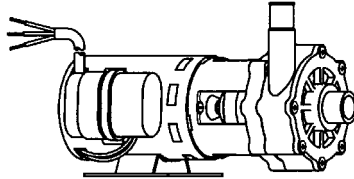
# MARCH PUMPS

1819 PICKWICK AVE., GLENVIEW, IL 60026-1306, U.S.A  
 PHONE: (847) 729-5300 - FAX: (847) 729-7062  
 WWW.MARCHPUMP.COM

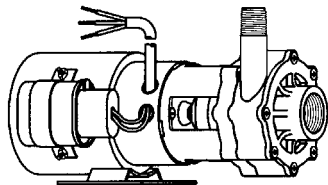
AC-4C-MD, BC-4C-MD  
 AC-4A-MD, BC-4A-MD  
 BC-4K-MD



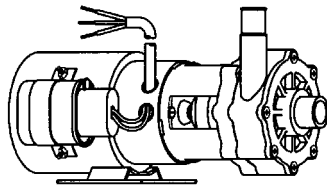
AC-4C-MD



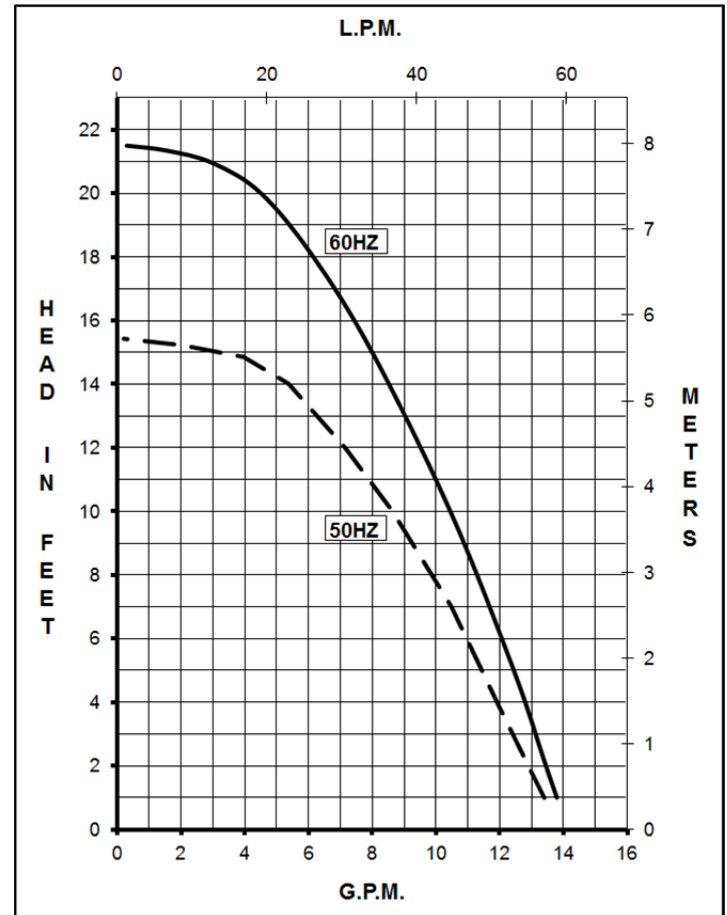
AC-4A-MD



BC-4C-MD & BC-4K-MD



BC-4A-MD



**MODEL ABBREVIATIONS:**

AC = Air Cooled Motor, BC = Blast Cooled Motor  
 C/K = Threaded Inlet/Outlet, A = Smooth Inlet/Outlet,  
 K = Kynar, C/A = Polypropylene  
 MD = Magnetic Drive  
 BC models have an encapsulated impeller magnet.

**DESCRIPTION:**

Series 4 are centrifugal magnetic drive pumps, eliminating the need for a shaft seal. These pumps can be serviced with a screwdriver. See the repair parts list for a breakdown of replacement parts.

**OPERATION:**

These pumps are not self-priming, lack a suction lift, and thus require a **flooded suction**. These pumps **cannot be run dry** because the impeller requires the liquid being pumped for lubrication. For liquids with a specific gravity greater than water, have a higher viscosity, or for elevated temperatures, a trimmed impeller may be necessary. For application assistance, contact March Pump.

**ELECTRICAL:**

Motors are available in different electrical configurations such as 115V 50/60Hz, and 230V 50/60Hz, 1 phase. The AC-4-MD motor is open air cooled. The BC-4-MD motor is blast cooled. The motors are U.L. listed and rated for continuous duty.

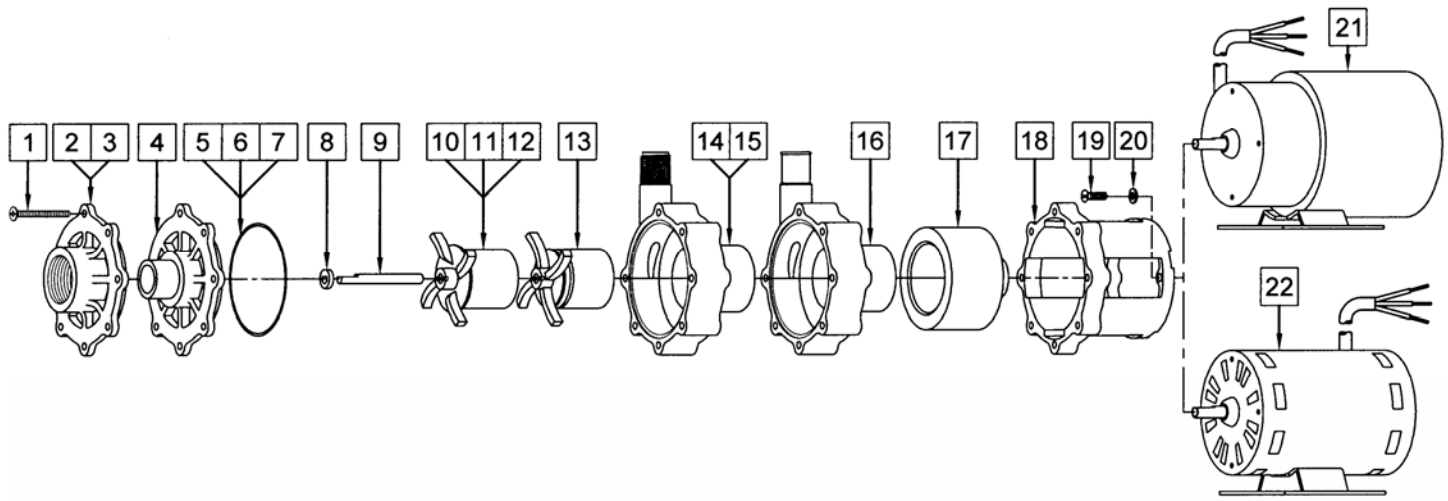
**NOTES:**

All specifications & data are based on pumping water & are intended as a guideline only. Specifications may vary with different motors.

**LIMITED WARRANTY:**

March pumps are guaranteed only against defects in workmanship or materials for a period of one year from date of manufacture pumping water. For the complete warranty and to register online go to [www.marchpump.com/warranty-registration](http://www.marchpump.com/warranty-registration)

| SPECIFICATIONS             |        |              | AC-4C-MD           | AC-4A-MD     | BC-4C-MD             | BC-4A-MD     | BC-4K-MD     |
|----------------------------|--------|--------------|--------------------|--------------|----------------------|--------------|--------------|
| Max Flow                   | 50Hz   | lpm          | 50                 |              | 50                   |              |              |
|                            | 60Hz   | gpm          | 14                 |              | 14                   |              |              |
| Max Head                   | 50Hz   | m            | 4.7                |              | 4.7                  |              |              |
|                            | 60Hz   | ft (psi)     | 21.5 (9.3)         |              | 21.5 (9.3)           |              |              |
| Inlet                      |        |              | 1" FPT             | 1" OD        | 1" FPT               | 1" OD        | 1" FPT       |
| Outlet                     |        |              | 1/2" MPT           | 3/4" OD      | 1/2" MPT             | 3/4" OD      | 1/2" MPT     |
| Max Internal Pressure      | psi    |              | 50                 |              | 50                   |              | 75           |
|                            | bar    |              | 3.4                |              | 3.4                  |              | 5            |
| Max Liquid Temperature     | °F     |              | 190                |              | 190                  |              | 200          |
|                            | °C     |              | 87                 |              | 87                   |              | 93           |
| Packed Weight              |        | kg/lbs       | 3.8/8.5            |              | 4.5/10               |              |              |
| Motor Type                 |        |              | Air Cooled 1 Phase |              | Blast Cooled 1 Phase |              |              |
| 50Hz                       | 115V   | Watts - Amps | 121 - 1.75         |              | 125 - 1.9            |              |              |
|                            |        | Kw - Rpm     | 0.062 - 2850       |              | 0.074 - 2850         |              |              |
| 60Hz                       | 115V   | Watts - Amps | 172 - 1.75         |              | 179 - 1.9            |              |              |
|                            |        | Hp - Rpm     | 1/12 - 3450        |              | 1/10 - 3450          |              |              |
| Electrical Connection      |        |              | 3 ft (0.9 m) Cord  |              | 3 ft (0.9 m) Cord    |              |              |
| Overall Pump Dimensions in | Height |              | 5.57 / 14.1        |              | 5.65 / 14.1          |              |              |
|                            | Width  |              | 5.11 / 12.9        |              | 5.36 / 13.6          |              |              |
|                            | Length |              | 9.77 / 24.8        | 10.34 / 26.2 | 10.18 / 25.8         | 10.74 / 27.2 | 10.18 / 25.8 |
| Motor Type                 |        |              | Air Cooled 1 Phase |              | Blast Cooled 1 Phase |              |              |
| 50Hz                       | 230V   | Watts - Amps | 126 - 0.75         |              | 121 - 0.75           |              |              |
|                            |        | Kw - Rpm     | 0.062 - 2850       |              | 0.074 - 2850         |              |              |
| 60Hz                       | 230V   | Watts - Amps | 165 - 0.75         |              | 178 - 0.75           |              |              |
|                            |        | Hp - Rpm     | 1/12 - 3450        |              | 1/10 - 3450          |              |              |
| Electrical Connection      |        |              | 3 ft (0.9 m) Cord  |              | 3 ft (0.9 m) Cord    |              |              |
| Overall Pump Dimensions in | Height |              | 5.57 / 14.1        |              | 5.65 / 14.1          |              |              |
|                            | Width  |              | 5.07 / 12.8        |              | 5.36 / 13.6          |              |              |
|                            | Length |              | 10.09 / 25.6       | 10.65 / 27.0 | 10.18 / 25.8         | 10.74 / 27.2 | 10.18 / 25.8 |



**NOTE:**

When attaching the Drive Magnet (item 17) to the motor shaft, position the face of the Drive Magnet 1/16 inch below the face of the Motor Bracket (item 18).

**REPAIR PARTS LIST**

| ITEM | DESCRIPTION  | MATERIAL                     | SIZE (Inches)       | QTY. | PART #                           | AC    |       | BC    |       |       |
|------|--|------------------------------|---------------------|------|----------------------------------|-------|-------|-------|-------|-------|
|      |  |                              |                     |      |                                  | 4C-MD | 4A-MD | 4C-MD | 4A-MD | 4K-MD |
| 1    | Screw  | Stainless Steel              | #8-32 x 1-3/4 Lg.   | 7    | 0150-0021-1000                   | S     | S     | S     | S     | S     |
| 2    | Cover  | Polypropylene                | 1 FPT Inlet         | 1    | 0150-0032-1000                   | S     | O     | S     | O     |       |
| 3    | Cover  | Kynar                        | 1 FPT Inlet         | 1    | 0150-0124-1000                   |       |       |       |       | S     |
| 4    | Cover  | Polypropylene                | 1 OD Inlet          | 1    | 0150-0150-1000                   | O     | S     | O     | S     |       |
| 5    | "O" Ring   | Buna-N                       | 1/16 CS x 3 OD      | 1    | 0135-0007-1000                   | S     | S     | O     | O     | O     |
| 6    | "O" Ring   | Viton                        | 1/16 CS x 3 OD      | 1    | 0135-0023-1000                   | O     | O     | S     | S     | S     |
| 7    | "O" Ring   | Viton/Teflon                 | 0.070 CS x 3-1/8 OD | 1    | 0150-0171-1000                   | O     | O     | O     | O     | O     |
| 8    | Thrust Washer                                      | Ceramic                      |                     | 1    | 0130-0028-1000                   | S     | S     | S     | S     | S     |
| 9    | Shaft  | Ceramic                      |                     | 1    | 0130-0024-1000                   | S     | S     | S     | S     | S     |
| 10   | Encapsulated Impeller                              | Polypropylene                |                     | 1    | 0145-0033-0200                   | O     | O     | S     | S     |       |
| 11   | Encapsulated Impeller                              | Kynar                        |                     | 1    | 0145-0039-0200                   |       |       |       |       | S     |
| 12   | Encapsulated Impeller w/Bushing                    | Polypropylene/Carbon         |                     | 1    | 0145-0033-0300                   |       |       | O     | O     |       |
| 13   | Impeller   | Polypropylene/Ceramic Magnet |                     | 1    | 0145-0011-0100                   | S     | S     | O     | O     |       |
| 14   | Rear Housing w/Thrust Washer                       | Polypropylene/Ceramic        | 1/2 MPT Outlet      | 1    | 0150-0031-0100                   | S     | O     | S     | O     |       |
| 15   | Rear Housing w/Thrust Washer                       | Kynar/Ceramic                | 1/2 MPT Outlet      | 1    | 0150-0123-0100                   |       |       |       |       | S     |
| 16   | Rear Housing w/Thrust Washer                       | Polypropylene/Ceramic        | 3/4 OD Outlet       | 1    | 0150-0159-0100                   | O     | S     | O     | S     |       |
| 17   | Drive Magnet                                       |                              |                     | 1    | 0145-0027-0100                   | S     | S     | S     | S     | S     |
| 18   | Motor Bracket                                      | Plastic                      |                     | 1    | 0145-0010-1000                   | S     | S     | S     | S     | S     |
| 19   | Screw  | Stainless Steel              | #8-32 x 5/8 Lg.     | 4    | 0618-0027-1000                   | S     | S     | S     | S     | S     |
| 20   | Washer Flat  | Stainless Steel              | #8                  | 4    | 0858-0004-1000                   | S     | S     | S     | S     | S     |
| 21   | BC Motor, 115V, 50/60Hz<br>BC Motor, 230V, 50/60Hz |                              |                     | 1    | 0145-0035-1000<br>0145-0036-1000 | O     | O     | S     | S     | S     |
| 22   | AC Motor, 115V, 50/60Hz<br>AC Motor, 230V, 50/60Hz |                              |                     | 1    | 0145-0012-1000<br>0145-0029-1000 | S     | S     | O     | O     | O     |

NOTE: Contact Factory for other materials and/or parts not listed.

Legend: S = Standard, O = Optional

**MATERIALS IN CONTACT WITH SOLUTION:**

AC-4C/4A-MD: Polypropylene, Buna N, Ceramic, Ceramic Magnet

BC-4C/4A-MD: Polypropylene, Viton, Ceramic

BC-4K-MD: Kynar/Carbon Filled, Viton, Ceramic