



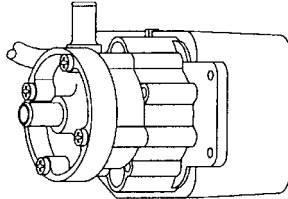
MARCH PUMPS

1819 PICKWICK AVE., GLENVIEW, IL 60026-1306, U.S.A
 PHONE: (847) 729-5300 - FAX: (847) 729-7062
 WWW.MARCHPUMP.COM

1A-MD, AC-1A-MD

1C-MD, AC-1C-MD

1U-MD

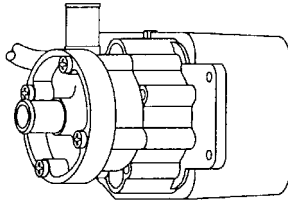


1A-MD-3/8

MODEL ABBREVIATIONS:

A = Smooth Inlet/Outlet, C = Threaded Inlet/Outlet, U = Screen Inlet, MD = Magnetic Drive
 AC = Expose Skelton Motor

DESCRIPTION: Series 1 are centrifugal magnetic drive pumps, eliminating the need for a shaft seal. These pumps can be serviced with a screwdriver. The models 1A-MD, 1C-MD, and 1U-MD are hermetically encapsulated, which allows the pumps to run fully submerged in many liquids or in open air for complete moisture protection. See the repair parts list for a breakdown of replacement parts.



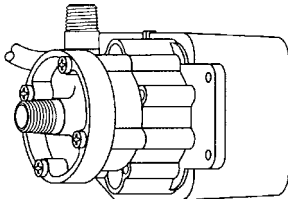
1A-MD-1/2

OPERATION:

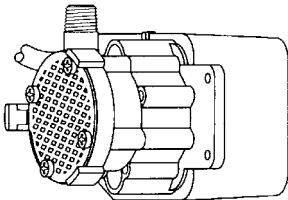
These pumps are not self-priming, lack a suction lift, and thus require a **flooded suction**. These pumps **cannot be run dry** because the impeller requires the liquid being pumped for lubrication. For application assistance, contact March Pump.

ELECTRICAL:

Motors are available in different electrical configurations such as 115V 50/60Hz, 230V 50/60Hz, or 115V 60Hz, 1 phase, and rated as continuous duty. All cord sets are U.L. LISTED 18/3 wire SJT plastic. The motors (#26 & #27) are C.S.A. approved under File NO. 40072. The models 1A-MD, 1C-MD & 1U-MD are U.L. Recognized under the U.L. component program. U.L. Recognition On Pumps Is For Water Only.



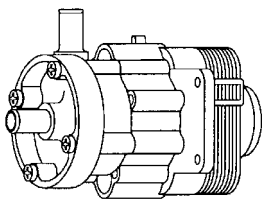
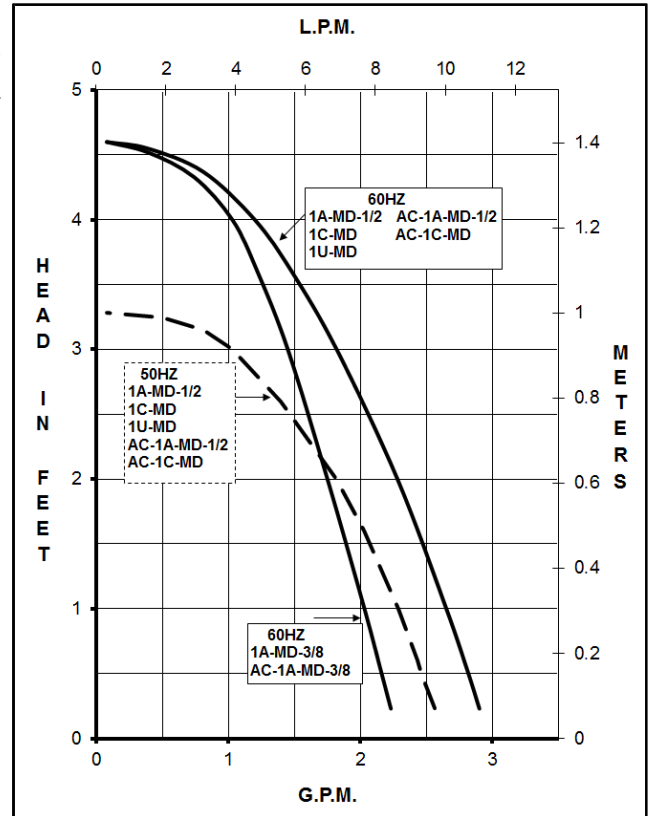
1C-MD



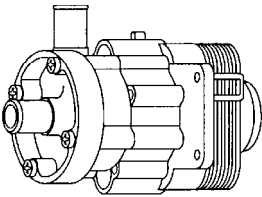
1U-MD

NOTES:

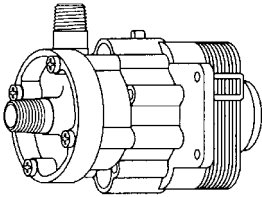
All specifications & data are based on pumping water & are intended as a guideline only. Specifications may vary with different motors.



AC-1A-MD-3/8

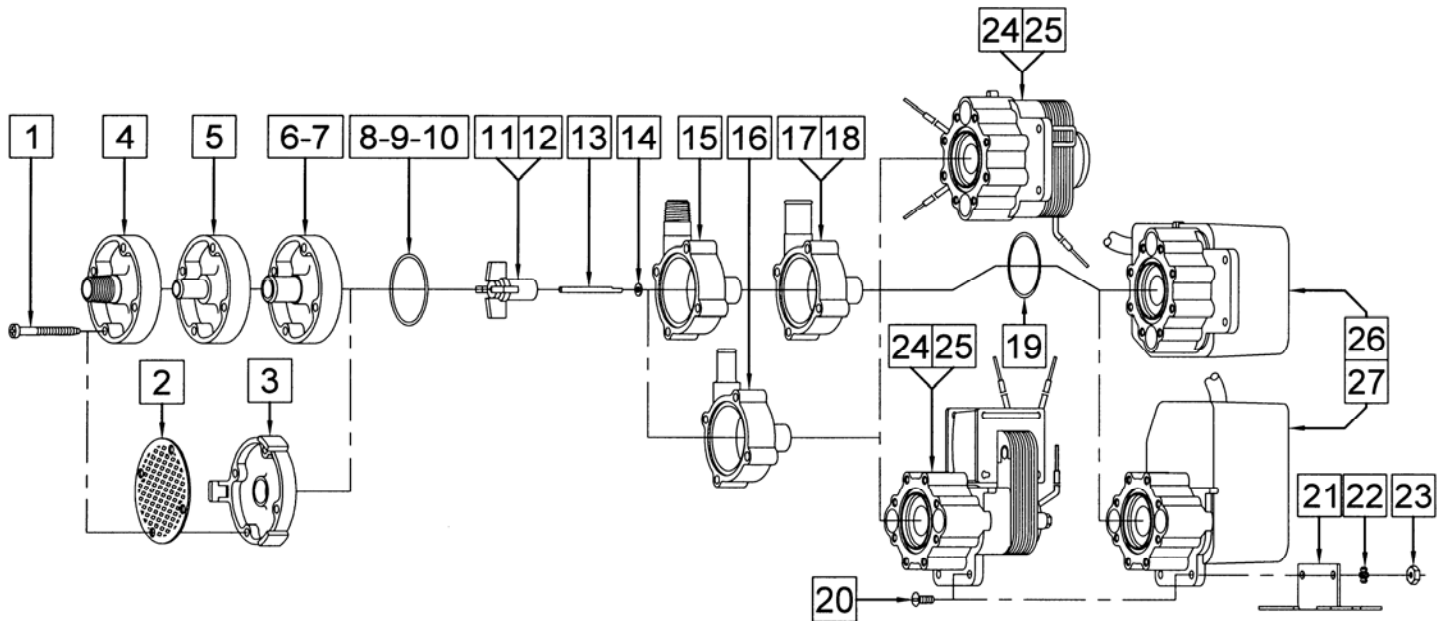


AC-1A-MD-1/2



AC-1C-MD

| SPECIFICATIONS | | 1A-MD-3/8 | 1A-MD-1/2 | 1C-MD | 1U-MD | AC-1A-MD-3/8 | AC-1A-MD-1/2 | AC-1C-MD | |
|--|--------|---------------------------|--------------|------------|----------|-------------------------|--------------|--------------|--|
| Max Flow | 50Hz | lpm | 8.7 | 9 | | 8.7 | 9 | | |
| | 60Hz | gpm | 2.3 | 3.0 | | 2.3 | 3.0 | | |
| Max Head | 50Hz | m | 1 | | | | | 1 | |
| | 60Hz | ft (psi) | 4.6 (2.0) | | | | | 4.6 (2.0) | |
| Inlet | | 3/8" OD | 1/2" OD | 1/4" MPT | Screen | 3/8" OD | 1/2" OD | 1/4" MPT | |
| Outlet | | 3/8" OD | 1/2" OD | 1/4" MPT | 1/4" MPT | 3/8" OD | 1/2" OD | 1/4" MPT | |
| Max Internal Pressure | psi | 50 | | | | | 50 | | |
| | bar | 3.4 | | | | | 3.4 | | |
| Max Liquid Temperature | °F | 190 open air, 160 sub | | | | | 190 open air | | |
| | °C | 87 open air, 71 sub | | | | | 87 open air | | |
| Packed Weight | kg/lbs | 1.13/2.5 | | | | | 1.04/2.3 | | |
| Motor Type | | TE/SUB 1 Phase | | | | Skeleton 1 Phase | | | |
| 50Hz | 115V | Watts - Amps | 19 - 0.45 | | | | | | |
| | | Kw - Rpm | 0.003 - 2650 | | | | | | |
| 60Hz | 115V | Watts - Amps | 19 - 0.45 | | | | | 19 - 0.45 | |
| | | Hp - Rpm | 1/200 - 3200 | | | | | 1/200 - 3200 | |
| Electrical Connection | | 6 ft (1.8 m) Cord w/plug | | | | 16" (40 cm) Loose Leads | | | |
| Motor Type | | TE/SUB 1 Phase | | | | Skeleton 1 Phase | | | |
| 50Hz | 230V | Watts - Amps | 19 - 0.23 | | | | | 19 - 0.23 | |
| | | Kw - Rpm | 0.003 - 2650 | | | | | 0.003 - 2650 | |
| 60Hz | 230V | Watts - Amps | 19 - 0.23 | | | | | 19 - 0.23 | |
| | | Hp - Rpm | 1/200 - 3200 | | | | | 1/200 - 3200 | |
| Electrical Connection | | 6 ft (1.8 m) Cord no plug | | | | 16" (40 cm) Loose Leads | | | |
| Overall Pump Dimensions in Inches / cm | Height | 3.17 / 8.0 | | | | 3.06 / 7.7 | | | |
| | Width | 3.75 / 9.5 | | | | 3.60 / 9.1 | | | |
| | Length | 4.44 / 11.2 | | 3.83 / 9.7 | | 4.38 / 11.1 | | | |



REPAIR PARTS LIST

| ITEM | DESCRIPTION | MATERIAL | SIZE (Inches) | QTY | PART # | 1A-MD-3/8 | 1A-MD-1/2 | 1C-MD | 1U-MD | AC | | |
|------|--|----------------------|---------------------|-----|----------------|-----------|-----------|-------|-------|-----------|-----------|-------|
| | | | | | | | | | | 1A-MD-3/8 | 1A-MD-1/2 | 1C-MD |
| 1 | Self-Tapping Screw | Stainless Steel | #7-19 x 1-7/16 Lg. | 4 | 0115-0062-1000 | S | S | S | S | S | S | S |
| 2 | Inlet Screen | Delrin | | 1 | 0115-0012-1000 | O | O | O | S | | | |
| 3 | Cover | Cycolac | | 1 | 0115-0016-1000 | O | O | O | S | | | |
| 4 | Cover | Polypropylene | 1/4 MPT Inlet | 1 | 0115-0058-1000 | O | O | S | O | O | O | S |
| 5 | Cover | Polypropylene | 3/8 O.D. Inlet | 1 | 0115-0075-1000 | S | O | O | O | S | O | O |
| 6 | Cover | Polypropylene | 1/2 O.D. Inlet | 1 | 0115-0060-1000 | O | S | O | O | O | S | O |
| 7 | Cover | Kynar | 1/2 O.D. Inlet | 1 | 0115-0096-1000 | O | O | O | O | O | O | O |
| 8 | "O" Ring (Cover) | Buna N | 1/16 CS x 1-7/16 OD | 1 | 0115-0018-1000 | S | S | S | S | S | S | S |
| 9 | "O" Ring (Cover) | Viton | 1/16 CS x 1-7/16 OD | 1 | 0115-0061-1000 | O | O | O | O | O | O | O |
| 10 | "O" Ring (Cover) | Teflon | 1/16 CS x 1-7/16 OD | 1 | 0115-0069-1000 | O | O | O | O | O | O | O |
| 11 | Impeller | Nylon/Ceramic Magnet | | 1 | 0115-0008-0100 | S | S | S | S | S | S | S |
| 12 | Impeller | Kynar/Ceramic Magnet | | 1 | 0115-0097-0100 | O | O | O | O | O | O | O |
| 13 | Shaft | 316 Stainless | | 1 | 0115-0032-1000 | S | S | S | S | S | S | S |
| 14 | Thrust Washer | Carbon/Teflon | | 1 | 0115-0033-1000 | S | S | S | S | S | S | S |
| 15 | Rear Housing | Polypropylene | 1/4 MPT Outlet | 1 | 0115-0057-1000 | O | O | S | S | O | O | S |
| 16 | Rear Housing | Polypropylene | 3/8 O.D. Outlet | 1 | 0115-0074-1000 | S | O | O | O | S | O | O |
| 17 | Rear Housing | Polypropylene | 1/2 O.D. Outlet | 1 | 0115-0059-1000 | O | S | O | O | O | S | O |
| 18 | Rear Housing | Kynar | 1/2 O.D. Outlet | 1 | 0115-0095-1000 | O | O | O | O | O | O | O |
| 19 | "O" Ring (Bracket) | Buna N | 1/16 CS x 1-5/16 OD | 1 | 0115-0017-1000 | S | S | S | S | | | |
| 20 | Screw | Stainless Steel | #6-32 x 3/8 Lg. | 2 | 0455-0038-1000 | O | O | O | O | O | O | O |
| 21 | Base | Stainless Steel | | 1 | 0115-0081-1000 | O | O | O | O | O | O | O |
| 22 | Lock Washer | Stainless Steel | #6 | 2 | 0455-0037-1000 | O | O | O | O | O | O | O |
| 23 | Nut | Steel | #6-32 | 2 | 0455-0043-1000 | O | O | O | O | O | O | O |
| 24 | Air Cooled Assembly (115V 60Hz) | | | 1 | 0858-0009-0100 | | | | | S | S | S |
| 25 | Air Cooled Assembly (230V 50/60Hz) | | | 1 | 0858-0013-0100 | | | | | S | S | S |
| 26 | Epoxy Motor, Bracket, Cord Assy (115V 50/60Hz) | | | n/a | Not Available | S | S | S | S | | | |
| 27 | Epoxy Motor, Bracket, Cord Assy (230V 50/60Hz) | | | n/a | Not Available | S | S | S | S | | | |

NOTE: Contact Factory for other materials and/or parts not listed.

Legend: S = Standard, O = Optional

MATERIALS IN CONTACT WITH SOLUTION:

Polypropylene, Nylon, Buna N, 316 Stainless Steel, Ceramic Magnet, and Carbon/Teflon washer.

When epoxy pumps are submerged the following additional materials are in contact Epoxy, Noryl, Cycolac, Delrin, and SJT cord.

LIMITED WARRANTY: March pumps are guaranteed only against defects in workmanship or materials for a period of one year from date of manufacture pumping water. For the complete warranty and to register online go to www.marchpump.com/warranty-registration