

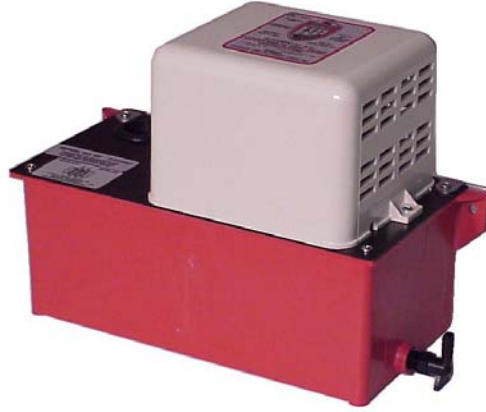


MARCH PUMPS

1819 PICKWICK AVE., GLENVIEW, IL 60026-1306, U.S.A
 PHONE: (847) 729-5300 - FAX: (847) 729-7062
 WWW.MARCHPUMP.COM

INSTRUCTIONS & REPAIR PARTS FOR

U.L. LISTED MODEL AB-2F CONDENSATE DISPOSAL PUMP



LISTED 734L
 CIRCULATING PUMP

MODEL AB-2F RATINGS & SPECIFICATIONS

| MOTOR SPECS. | | | | | GALLONS PER HOUR (Rating based on using ¼" I.D. Tubing) | | | | MAX HEAD IN FT. | MAX P.S.I | OUTLET PORT | PACKED WEIGHT |
|--------------|------|-------|------|--------|--|-------|--------|--------|-----------------|-----------|-------------|---------------|
| VOLTS | AMPS | WATTS | H.P. | R.P.M. | 1 FT. | 5 FT. | 10 FT. | 15 FT. | | | | |
| 115 | 1.0 | 55 | 1/35 | 3300 | 75 | 55 | 29 | 7 | 17 | 7.4 | ¼ F.P.T | 6 lbs. |

LOCATION: Model AB-2F pump is designed to mount BELOW the evaporator pan. It is preferable to mount pump as close to drip pan drain as possible to minimize actual lift and to clear components usually found on floor of most A.C. units. Pump is designed to mount on side of A.C. unit, or on wall near unit by using the two ears on each end of the red plastic sump.

PIPING: The Condensate Pump Inlet is a 1" diameter hole in the rubber grommet in the top metal plate. Attach a 1" O.D. rubber or plastic tube to the evaporator drip pan drain connection and lead it down into the pump inlet hole. Make sure the drain line is not kinked or collapsed due to sharp bends.

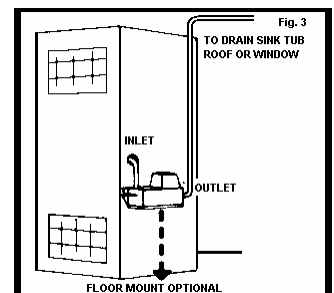
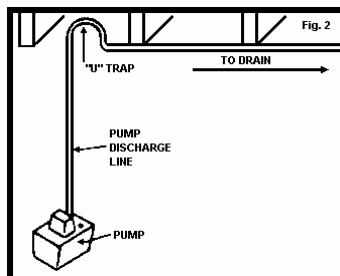
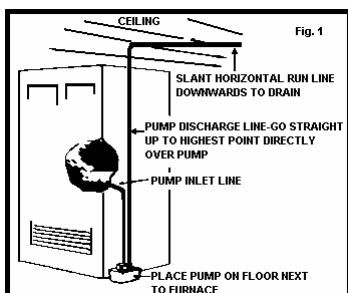
The Outlet fitting is a 90 degree angle tube fitting to which you attach the ¼" I.D. plastic tubing. It is important to go straight up from the pump to the highest vertical point and then run the horizontal line to the drain. All horizontal lines should be slanted slightly downwards toward the drain or disposal area in order to prevent line drain-back into the pump after it goes off (See Figure 1). If impractical to slant the horizontal run, make an inverted "U" trap directly over the pump at the highest point to prevent back-syphoning (See Figure 2). The slight amount of drain-back from vertical column is not generally enough with ¼" I.D. tubing to short-cycle the pump. Total maximum lift is 17 feet.

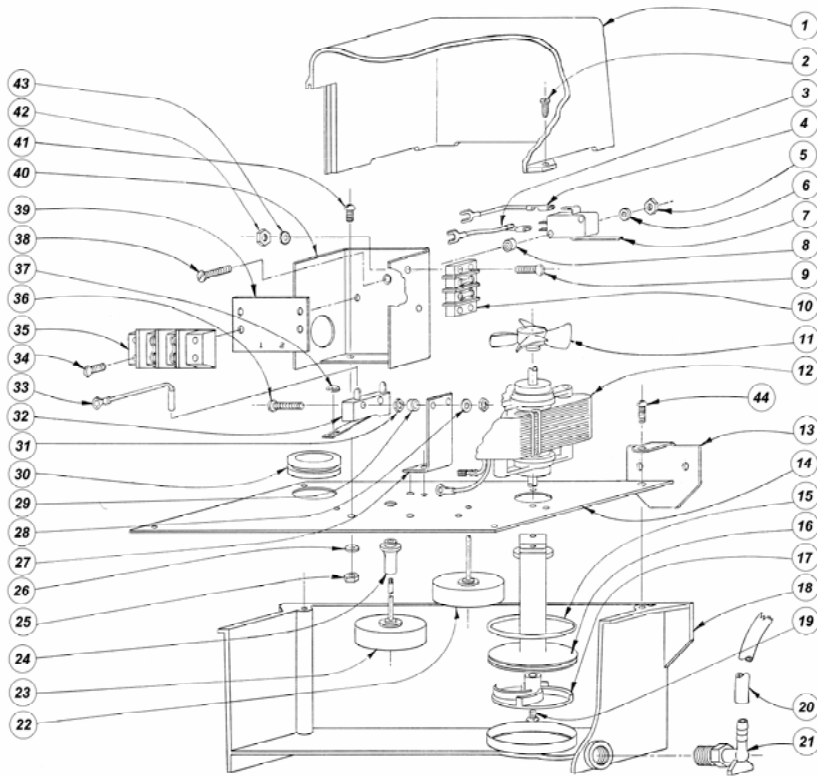
ELECTRICAL & OPERATION: Remove the 2 self-trapping screws holding down the Top Cover & lift the cover off. The AB-2F is equipped with a BX Bracket & two terminal boards. The small 2 station terminal board is for the 24V A.C. Safety Switch. The large 2 station terminal board is for the 115V A.C. Operating Switch. Attach rigid or flexible conduit to the BX bracket & wire the 115V A.C. board per the wiring diagram.

The 115V line current will operate the Motor-Pump-Operating Float Combination.- The safety switch must be connected to the 24V A.C. relay transformer to the A.C. Thermostat. If the Pump should fail to operate for any reason, the water will eventually trip the safety float & cause the A.C. unit to shut off. This will prevent additional water from collecting & overflowing the container. The 24 AC leads to the transformer need not be shielded in conduit. Run the leads under the cutout in the cover.

WARNING: Reduced risk of electric shock during operation of this pump requires the provision of acceptable grounding. If the means of connection to the supply-connection box is other than grounded metal conduit, ground the pump back to the service by connecting a copper conductor, at least the size of the circuit conductors supplying the pump, to the grounding screw provided within the wiring compartment.

SERVICING AND MAINTANCE: Remove the 6 screws on each corner of the galvanized sump cover and lift the assembly out of the Red Sump container. Clean out all dirt accumulation on the parts. Check the float rods to be sure they work freely. Check the discharge fitting and tubing for any dirt accumulation. Place the sump cover back in place and screw down with 6 screws. Run the unit thru one cycle by pouring water into the container. Always replace the top cover.





MODEL AB-2F-U.L. PARTS LIST

| ITEM | DESCRIPTION | QTY. | PART NO. | ITEM | DESCRIPTION | QTY. | PART NO. |
|------|-------------------------------------|------|----------------|------|-------------------------------------|------|----------------|
| 1 | PUMP COVER | 1 | 0618-0082-1000 | 23 | FLOAT ROD ASSEMBLY | 1 | 0618-0010-0100 |
| 2 | #6 SELF TAPPING SCREW | 2 | 0620-0022-1000 | 24 | FLOAT ROD GUIDE | 1 | 0618-0006-1000 |
| 3 | CONNECTING WIRE & TERMINAL ASSEMBLY | 1 | 0618-0064-0100 | 25 | #8-32 HEX NUT | 9 | 0410-0039-1000 |
| 4 | CONNECTING WIRE & TERMINAL ASSEMBLY | 1 | 0618-0052-0100 | 26 | #8 INT. TOOTH LOCKWASHER | 9 | 0620-0010-1000 |
| 5 | #4-40 HEX NUT | 2 | 0618-0024-1000 | 27 | SWITCH BRACKET | 1 | 0618-0042-1000 |
| 6 | #4 INT. TOOTH LOCKWASHER | 2 | 0410-0034-1000 | 28 | #2 INT. TOOTH LOCKEASHER | 2 | 0618-0055-1000 |
| 7 | SAFETY SWITCH | 1 | 0415-0026-1000 | 29 | SWITCH SPACER | 2 | 0618-0053-1000 |
| 8 | SWITCH SPACER | 2 | 0618-0020-1000 | 30 | INLET GROMMET | 1 | 0618-0017-1000 |
| 9 | #6-32 X 1/2 LG. RND. HD. SCREW | 2 | 0809-0122-1000 | 31 | #2-56 HEX NUT | 4 | 0618-0054-1000 |
| 10 | 2 TERMINAL STRIP | 1 | 0618-0044-1000 | 32 | SWITCH | 1 | 0618-0043-1100 |
| 11 | FAN C.W. | 1 | 0210-0026-1000 | 33 | CONNECTION WIRE & TERMINAL ASSEMBLY | 1 | 0618-0049-0200 |
| 12 | MOTOR 115 V. 60 HZ. | 1 | 0618-0041-1000 | 34 | #8-32 X 11/16" LG. RND. HD. SCREW | 2 | 0618-0101-1000 |
| 13 | MOUNTING SUPPORT | 2 | 0618-0047-1000 | 35 | 2 TERMINAL STRIP | 1 | 0618-0045-1000 |
| 14 | PUMP MOUNTING PLATE | 1 | 0618-0007-1000 | 36 | #2-56 X 5/8" LG. RND. HD. SCREW | 2 | 0618-0086-1000 |
| 15 | "O" RING | 1 | 0618-0031-1000 | 37 | FLOAT "E" RING | 3 | 0410-0007-1000 |
| 16 | PUMP CONNECTING BODY | 1 | 0618-0014-1000 | 38 | #4-40 X 3/4" LG. FLT. HD. SCREW | 2 | 0618-0058-1000 |
| 17 | IMPELLER | 1 | 0618-0005-1000 | 39 | INSULATED PLATE | 1 | 0618-0057-1000 |
| 18 | PUMP BOTTOM CASE | 1 | 0618-0003-1000 | 40 | TERMINALS & SWITCH MOUNTING PLATE | 1 | 0618-0046-1000 |
| 19 | #4-40 X 5/16 LG. FLAT HD. SCREW | 1 | 0618-0025-1000 | 41 | #8-32 X 3/8" LG. RND. HD. SCREW | 5 | 0135-0040-1000 |
| 20 | 1/4" I.D. X 20 FT. LG TUBING | 1 | 0410-0024-1000 | 42 | #6-32 HEX NUT | 2 | 0455-0043-1000 |
| 21 | 90° ELBOW | 1 | 0618-0033-1000 | 43 | #6 LOCKWASHER | 2 | 0455-0037-1000 |
| 22 | SAFTEY FLOAT ASSEMBLY | 1 | 0618-0009-0100 | 44 | #8 X 1/2" LG. SELF TAP SCREW | 6 | 0410-0078-1000 |

Contact factory for other materials and/or parts not listed.

LIMITED WARRANTY

March pumps are guaranteed only against defects in workmanship or materials for a period of one year from date of manufacture pumping water. See March limited warranty statement on card #0410-0104-1000 packed with this pump.



1819 PICKWICK AVE., GLENVIEW, IL 60026-1306, U.S.A
 PHONE: (847) 729-5300 · FAX: (847) 729-7062 · www.marchpump.com

0618-0063-1000 R8