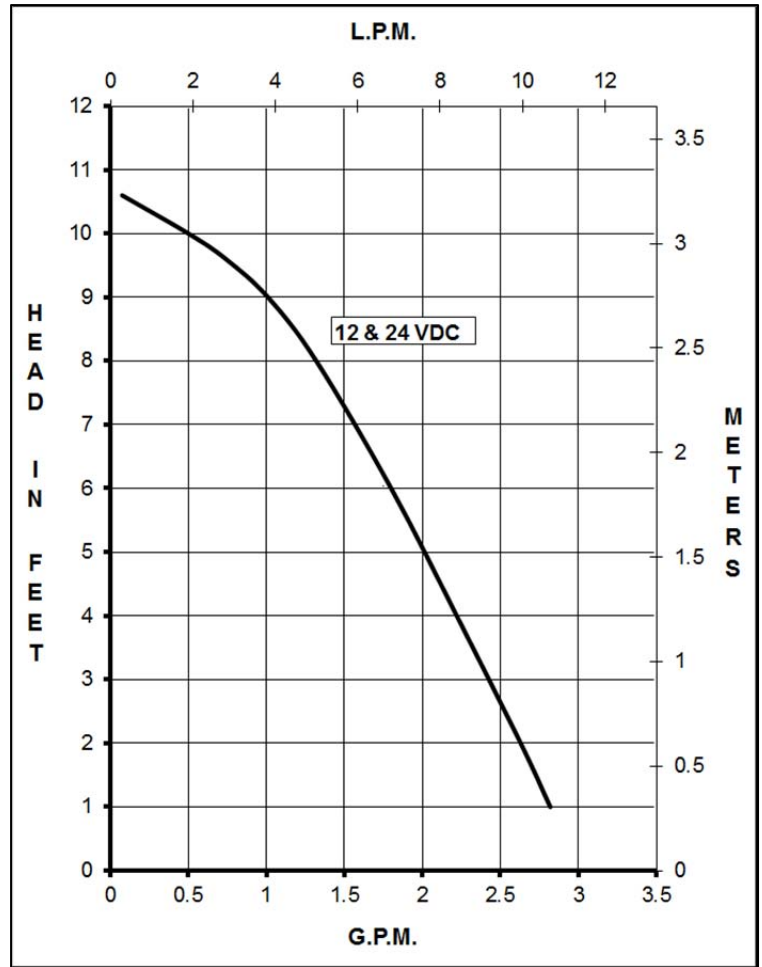
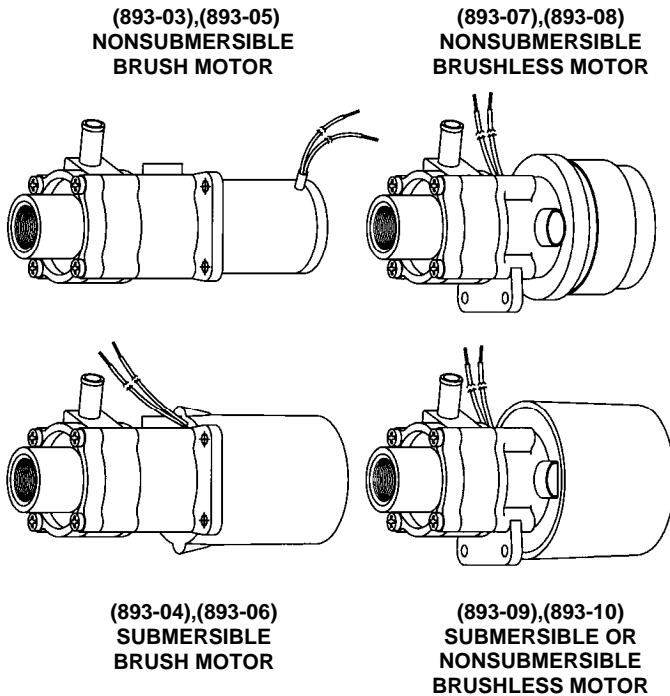




MARCH PUMPS

1819 PICKWICK AVE., GLENVIEW, IL 60026-1306, U.S.A
 PHONE: (847) 729-5300 - FAX: (847) 729-7062
 WWW.MARCHPUMP.COM

893



DESCRIPTION:

Series 893 are centrifugal magnetic drive pumps, eliminating the need for a shaft seal. These pumps can be serviced with a screwdriver. See the repair parts list for a breakdown of replacement parts.

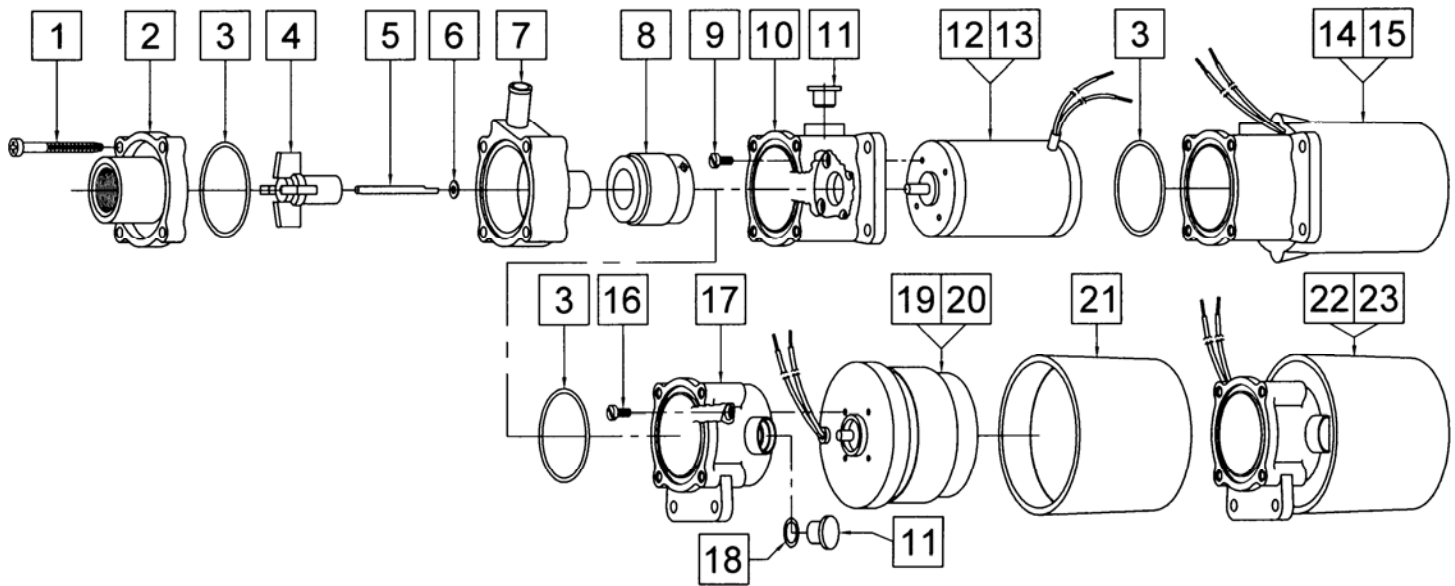
OPERATION:

These pumps are not self-priming, lack a suction lift, and thus require a **flooded suction**. These pumps **cannot be run dry** because the impeller requires the liquid being pumped for lubrication. For application assistance, contact March Pump.

NOTES:

All specifications & data are based on pumping water & are intended as a guideline only. Specifications may vary with different motors.

SPECIFICATIONS		893-03	893-04	893-05	893-06	893-07	893-08	893-09	893-10
Max Flow	lpm	11							
	gpm	2.7							
Max Head	m	3.3							
	ft (psi)	10.6 (4.5)							
Inlet		3/8" FPT							
Outlet		3/8" OD							
Max Internal Pressure	psi	50							
	bar	3.4							
Max Liquid Temperature	°F	190 open air	160 sub	190 open air	160 sub	190 open air	190 open air	130 sub	130 sub
	°C	87 open air	71 sub	87 open air	71 sub	87 open air	87 open air	54 sub	54 sub
Packed Weight	kg/lbs	0.45/1.0	0.54/1.2	0.45/1.0	0.54/1.2	0.45/1.0	0.45/1.0	0.54/1.2	0.54/1.2
Volts		12 DC		24 DC		12 DC	24 DC	12 DC	24 DC
Watts - Amps		12 - 1		12 - 0.5		12 - 1	12 - 0.5	12 - 1	12 - 0.5
Hp - Kw		1/150 - 0.004							
Rpm		4000							
Electrical Connection		20" (50 cm) Leads				16" (40 cm) Leads			
Overall Pump Dimensions in Inches / cm	Height	2.52 / 6.4	2.79 / 7.0	2.52 / 6.4	2.79 / 7.0	2.96 / 7.5	2.96 / 7.5	2.96 / 7.5	2.96 / 7.5
	Width	2.19 / 5.5	2.66 / 6.7	2.19 / 5.5	2.66 / 6.7	2.25 / 5.7	2.25 / 5.7	2.45 / 6.2	2.45 / 6.2
	Length	5.01 / 12.7	5.11 / 12.9	5.01 / 12.7	5.11 / 12.9	4.28 / 10.8	4.28 / 10.8	4.46 / 11.3	4.46 / 11.3



ELECTRICAL:

Brushless Motors must be operated within a restricted voltage range due to the electronics in the motor. The range for 12 VDC motors is 7V to 14V. The range for 24VDC motors is 12V to 28V. The Red Lead is Positive and the Blue Lead is Negative.

REPAIR PARTS LIST														
ITEM	DESCRIPTION	MATERIAL	SIZE (Inches)	QTY	PART #	Brush				Brushless				
						03	04	05	06	07	08	09	10	
1	Screws, Self-Tapping	Stainless	#7-19 x 1-7/16 Lg	4	0115-0062-1000	S	S	S	S	S	S	S	S	S
2	Cover	Noryl	3/8 FPT Inlet	1	0893-0004-1000	S	S	S	S	S	S	S	S	S
3	"O" Ring	Buna N	1/16 CS x 1-7/16 OD	2	0115-0018-1000	A	S	A	S	S	S	S	S	S
4	Impeller	Nylon/Ceramic Magnet		1	0115-0008-0100	S	S	S	S	S	S	S	S	S
5	Shaft	316 Stainless		1	0115-0032-1000	S	S	S	S	S	S	S	S	S
6	Thrust Washer (Rear)	Carbon/Teflon		1	0115-0033-1000	S	S	S	S	S	S	S	S	S
7	Rear Housing	Noryl	3/8 OD Outlet	1	0893-0003-1000	S	S	S	S	S	S	S	S	S
8	Drive Magnet			1	0115-0101-0100	S	S	S	S	S	S	S	S	S
9	Screws	Stainless	#4-40 x 1/4 Lg	4	0893-0016-1000	S	S							
10	Motor Bracket	Plastic		1	0893-0002-1000	S	S							
11	Plug	Plastic		1	0125-0110-1000	S	S			S	S			
12	Motor 12VDC Brush			1	0893-0001-1000	S	S							
13	Motor 24VDC Brush			1	0893-0022-1000			S	S					
14	Encapsulated Assy. 12VDC Brush			n/a	Not Available	S	S							
15	Encapsulated Assy. 24VDC Brush			n/a	Not Available			S	S					
16	Screws	Stainless	0.118 x 0.5 x 0.236 Lg	4	0893-0029-1000					S	S			
17	Motor Bracket	Plastic		1	0893-0035-0000					S	S			
18	"O" Ring	Viton	1/16 CS x 7/16 OD	1	0210-0008-1000					S	S			
19	Motor 12VDC Brushless			1	0893-0026-1000					S		S		
20	Motor 24VDC Brushless			1	0893-0027-1000						S		S	
21	Motor Cap	Plastic		1	0893-0036-1000					O	O			
22	Submersible Assy. 12VDC Brushless			n/a	Not Available							S	S	
23	Submersible Assy. 24VDC Brushless			n/a	Not Available							S	S	

NOTE: Contact Factory for other materials and/or parts not listed.

Legend: S = Standard, O = Optional, A = Only one required

MATERIALS IN CONTACT WITH SOLUTION:

Noryl, Nylon, Carbon/Teflon, Buna N, 316 Stainless Steel, Ceramic Magnet.

When pump is submerged the following additional materials are in contact: Epoxy, Delrin, & Motor Leads

LIMITED WARRANTY:

March pumps are warranted to the original user against defects in workmanship and materials under normal use with room temperature water. The brush type motors used on 03, 04, 05 & 06 have a rated brush life of 2,800 hours. They are warranted for 2,800 hours or 12 months, whichever comes first. The brushless motors used on 07, 08, 09, & 10 have a rated life of 50,000 hours and are warranted for 18 months from date of manufacture. For the complete warranty and to register online go to www.marchpump.com/warranty-registration