

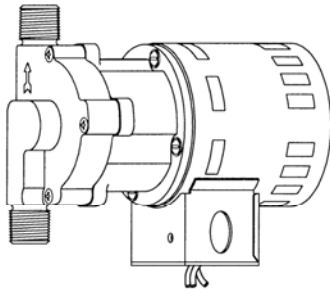


# MARCH PUMPS

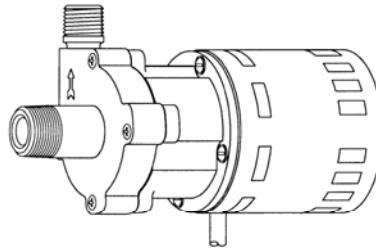
1819 PICKWICK AVE., GLENVIEW, IL 60026-1306, U.S.A  
 PHONE: (847) 729-5300 - FAX: (847) 729-7062  
 WWW.MARCHPUMP.COM

## 809

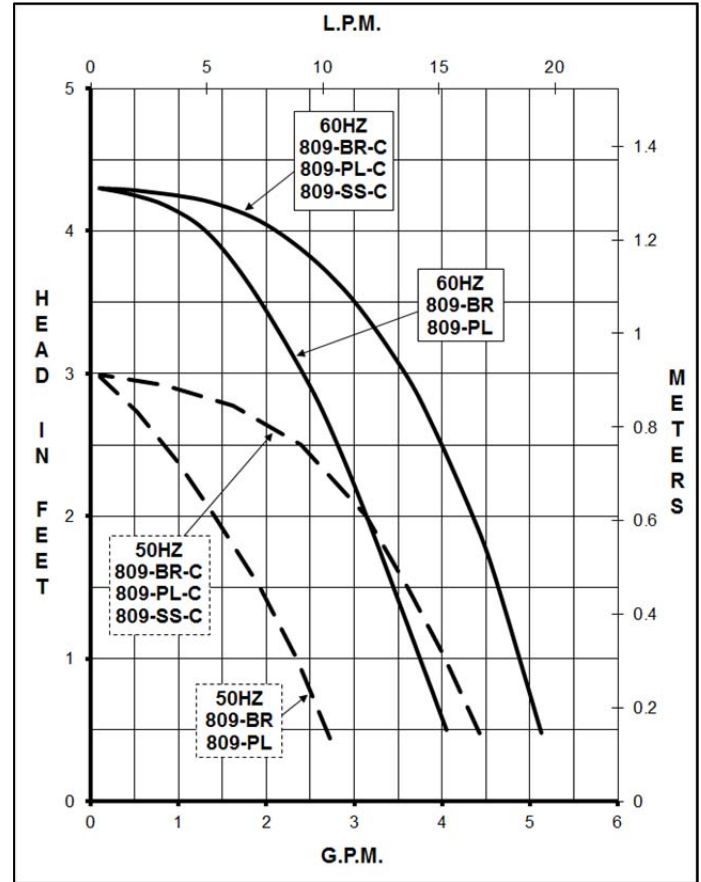
## HOT WATER PUMPS



809-BR  
809-PL  
Inline Housing



809-BR-C  
809-PL-C  
809-SS-C  
Center Inlet Housing



### ABBREVIATIONS:

BR = Bronze, PL = Polysulfone Plastic,  
 SS = Stainless Steel, C = Center Inlet.

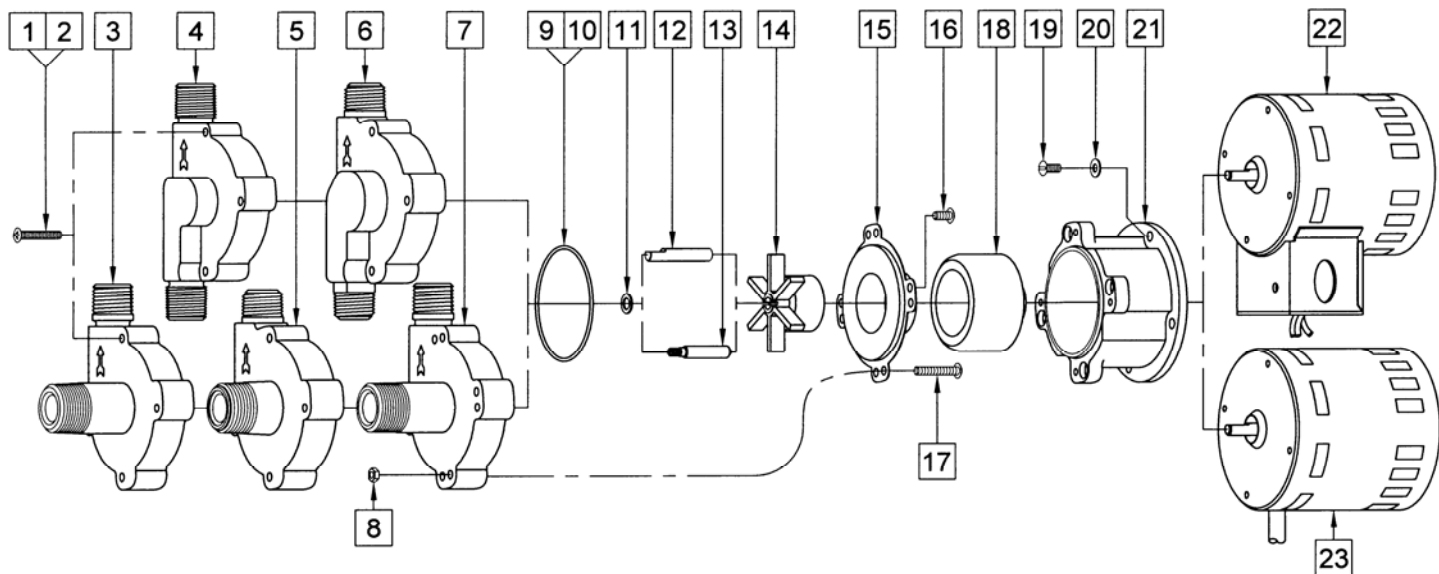
**DESCRIPTION:** The March 809 Series hot water booster centrifugal magnetic drive pumps are built to handle liquid transfer in heating and cooling operations. Contact the factory for application assistance.

**OPERATION:** These pumps are not self-priming, lack a suction lift, and thus require a flooded suction. These pumps cannot be run dry.

**INSTALLATIONS:** The 809 Series pumps should be installed with the pump housing arrow pointing in the direction of flow within the system. If the arrow indicating flow is not in the direction required, remove the housing screws (Item 1 or 2) holding the housing to the motor bracket and rotate the housing assembly as required. Replace the screws and tighten. The pump is composed of a wet end assembly which can be separated by unscrewing the screws (Item 1 or 2). The pump will then separate into 2 parts. The liquid will be contained within the wet end assembly unless the screws (Item 16 or 17) on the rear housing are loosened.

**LUBRICATION:** The motor should be oiled at least once a year at the start of the heating season with 4 or 5 drops of SAE 20 weight non-detergent oil in each bearing. If the pump is used daily, it should be oiled every six months. Do not over oil.

SPECIFICATIONS			809-BR	809-PL	809-BR-C	809-PL-C	809-SS-C	
Max Flow	50Hz	lpm	10.3			16.7		
	60Hz	gpm	4.3			5.0		
Max Head	50Hz	m	0.92			0.92		
	60Hz	ft (psi)	4.3 (1.86)			4.3 (1.86)		
Inlet			1/2" MPT		3/4" MPT	3/8" FPT & 3/4" MPT	3/4" MPT	
Outlet			1/2" MPT					
Max Internal Pressure	Overall Pump	psi	150	50	150	50	150	
		bar	10	3.4	10	3.4	10	
Max Liquid Temperature	Dimensions in Inches / cm	°F	250					
		°C	121					
Packed Weight	kg/lbs	2.7/6	2.3/5	2.7/6	2.3/5	2.7/6		
50Hz	115V	Motor Type		Air Cooled 1 Phase			Air Cooled 1 Phase	
		Watts - Amps	34 - 0.6					
		Kw - Rpm	0.007 - 1400					
		Watts - Amps	28 - 0.5			56 - 0.94		
60Hz	115V	Hp - Rpm	1/100 - 1750			1/55 - 1750		
		Electrical Connection		Conduit Box 3 ft (0.9 m) Cord				
Overall Pump	Dimensions in Inches / cm	Height	5.33 / 13.5		4.25 / 10.7	4.13 / 10.4	4.25 / 10.7	
		Width	3.33 / 8.4	3.38 / 8.5	3.38 / 8.5	3.38 / 8.5	3.38 / 8.5	
		Length	6.58 / 16.7		7.90 / 20.0	7.40 / 18.7	7.84 / 19.9	
50Hz	230V	Motor Type		Air Cooled 1 Phase			Air Cooled 1 Phase	
		Watts - Amps	35 - 0.19			60 - 0.50		
		Kw - Rpm	0.007 - 1400			0.018 - 1400		
		Watts - Amps	31 - 0.17			52 - 0.45		
60Hz	230V	Hp - Rpm	1/100 - 1750			1/40 - 1750		
		Electrical Connection		Conduit Box 3 ft (0.9 m) Cord				
Overall Pump	Dimensions in Inches / cm	Height	5.12 / 13.0		4.25 / 10.7	4.13 / 10.4	4.25 / 10.7	
		Width	3.33 / 8.4	3.38 / 13.5	3.38 / 8.5	3.38 / 8.5	3.38 / 8.5	
		Length	6.54		8.15 / 20.7	7.65 / 19.4	8.09 / 20.5	



### REPAIR PARTS LIST

ITEM	DESCRIPTION	MATERIAL	SIZE (Inches)	QTY.	PART #	809-BR	809-PL	809-BR-C	809-PL-C	809-SS-C
1	Screw	Steel	#8-32 x 1 Lg.	4	0923-0003-1000	S	S	S	S	
2	Screw	Stainless	#8-32 x 1 Lg.	4	0809-0205-1000					S
3	Pump Housing	Bronze	Center Inlet	1	0809-0142-0000			S		
4	Pump Housing	Bronze	Inline Inlet & Outlet	1	0809-0013-0000	S				
5	Pump Housing	Polysulfone	Center Inlet	1	0809-0179-0100				S	
6	Pump Housing	Polysulfone	Inline Inlet & Outlet	1	0809-0079-0100		S			
7	Pump Housing	Stainless	Center Inlet	1	0809-0150-0000					S
8	Hex Nut	Stainless	#8-32	4	0991-0004-1000					S
9	"O" Ring	Silicone	0.070 CS x 2.441 ID	1	0809-0165-1000	S		S		S
10	"O" Ring	Silicone	1/16 CS x 2-3/8 ID	1	0809-0027-1000		S		S	
11	Thrust Washer	Teflon		1	0809-0043-1000	S	S	S	S	S
12	Shaft	Stainless		1	0809-0161-1000	S	S	S	S	S
13	Shaft (Old Style)	Stainless	Left-Hand Thread	1	0809-0008-1000	O				
14	Impeller	Ryton/Teflon/Glass	2 Dia.	1	0809-0005-0100	S	S	S	S	S
15	Rear Housing	Stainless		1	0809-0012-1000	S	S	S	S	S
16	Screw	Stainless	#8-32 x 3/8 Lg.	4	0135-0040-1000	S	S	S	S	
17	Screw	Stainless	#8-32 x 1 Lg.	4	0809-0205-1000					S
18	Drive Magnet			1	0125-0083-0100	S	S	S	S	S
19	Screw	Stainless	#8-32 x 3/8 Lg.	4	0135-0040-1000	S	S	S	S	S
20	Washer	Stainless	#8	4	0858-0004-1000	S	S	S	S	S
21	Motor Bracket	Plastic		1	0809-0058-1000	S	S	S	S	S
22	Motor 115V, 50/60Hz		Conduit Box	1	0809-0064-1000	S	S			
22A	Motor 230V, 50/60Hz*		Conduit Box	1	0809-0065-1000	S	S			
23	Motor 115V, 60Hz		Cord	1	0135-0109-1000			S	S	S
23A	Motor 230V, 50/60Hz*		Cord	1	0135-0112-1000			S	S	S

NOTE: Contact Factory for other materials and/or parts not listed.

\*Not Shown

Legend: S = Standard, O = Optional

**GENERAL SAFETY INFORMATION:** Follow all local safety codes & the Occupational Safety and Health Act (OSHA). Make certain that the power source conforms to the requirements of your equipment. Always disconnect power source before performing any work on or near the electric motor. Caution must be exercised to relieve any pressure in the system & in draining hot water from the pump or the system. March cannot recommend the 809 Series out of bronze where the liquid is used for human consumption per California Law due to the presence of lead.

\*UL Recognition on pumps, file E80954, is for water only. Motors are U.L. Yellow Card listed, impedance protected or thermal overload Protected. Complete pump under U.L. file E80954.

**DISASSEMBLY AND REASSEMBLY:** The motor can be removed from the wet end assembly without draining the liquid from the system. To do so remove four screws (Item 1 or 2) and slide the motor assembly away. If parts inside the wet end assembly must be removed, isolate the pump or drain the system. When the system is drained and cool, remove the four screws (Item 16 or 17) from the rear of the housing. The rear housing can now be removed. Remaining pump parts can be removed. Replace any worn or damaged parts. Replace the O-ring anytime the rear housing is removed.

**NOTES:** All specifications & data are based on pumping water & are intended as a guideline only. Specifications may vary with different motors.

**LIMITED WARRANTY:** March pumps are guaranteed only against defects in workmanship or materials for a period of one year from date of manufacture pumping water. For the complete warranty and to register online go to [www.marchpump.com/warranty-registration](http://www.marchpump.com/warranty-registration)