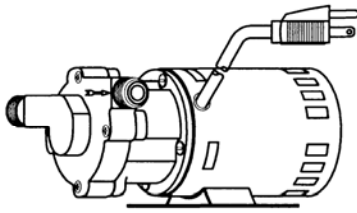




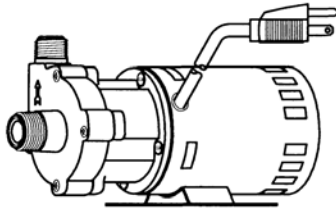
MARCH PUMPS

1819 PICKWICK AVE., GLENVIEW, IL 60026-1306, U.S.A
 PHONE: (847) 729-5300 - FAX: (847) 729-7062
 WWW.MARCHPUMP.COM

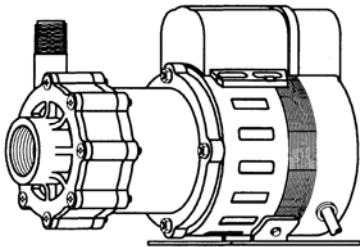
BEER PUMPS



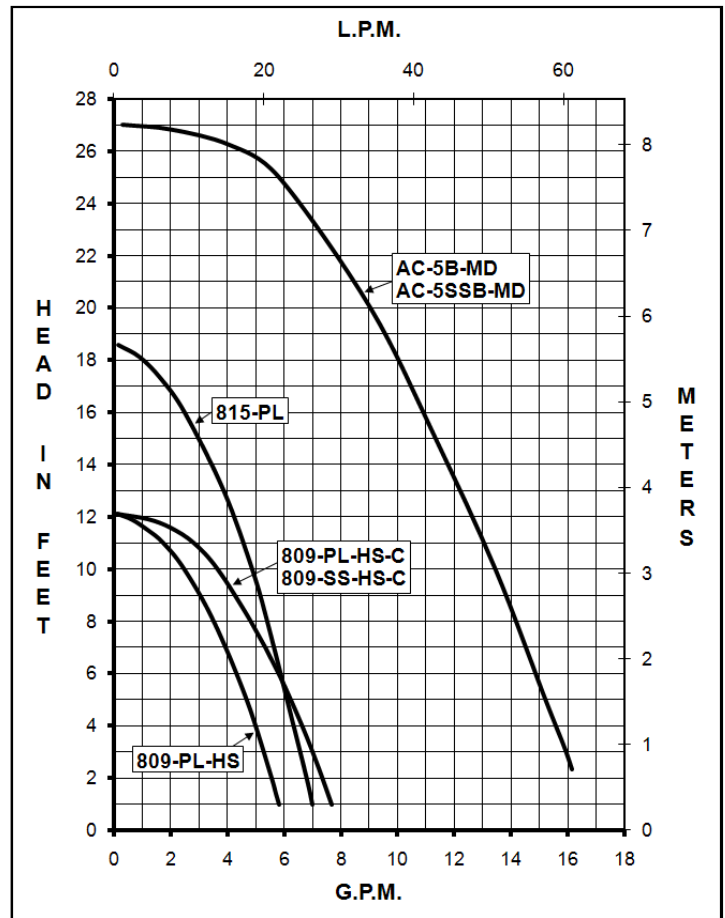
809-PL-HS BEER PUMP
815-PL BEER PUMP



809-PL-HS-C BEER PUMP
809-SS-HS-C BEER PUMP



AC-5B-MD BEER PUMP
AC-5SSB-MD BEER PUMP



MODEL ABBREVIATIONS:

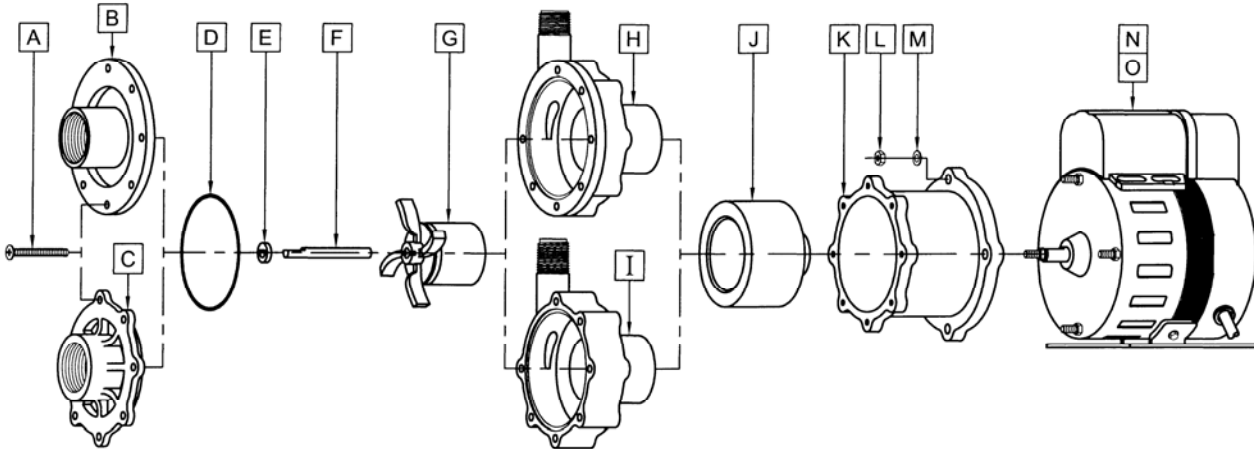
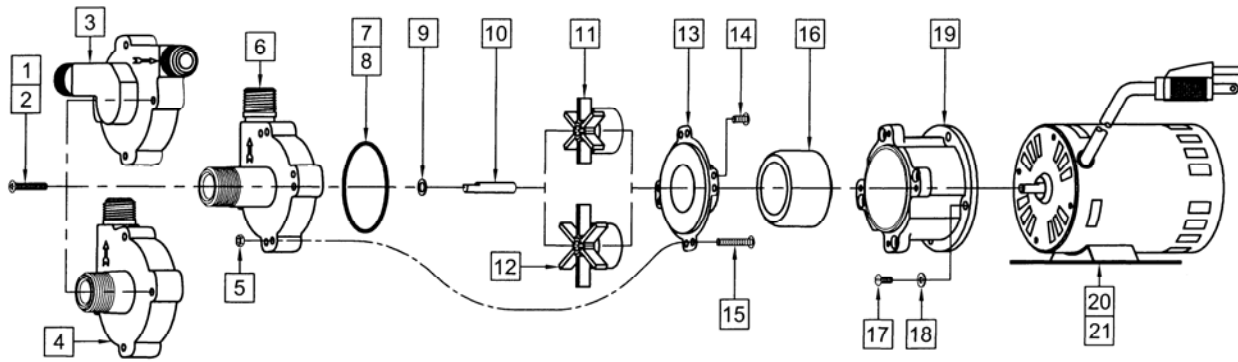
PL = Polysulfone Plastic
 SS = Stainless Steel
 C = Center Inlet

DESCRIPTION: The March beer pump is a non-self-priming magnetic drive unit built specifically to handle hot wort and water. The unit requires liquid being pumped to lubricate the internal parts. If the pump is run dry for a period of time the impeller and shaft may become damaged. To regulate the flow use a valve on the discharge/outlet.

NOTES: All specifications & data are based on pumping water & are intended as a guideline only. Specifications may vary with different motors.

LIMITED WARRANTY: March pumps are guaranteed only against defects in workmanship or materials for a period of one year from date of manufacture pumping water. Register online at www.marchpump.com/warranty-registration

SPECIFICATIONS			809-PL-HS	809-PL-HS-C	809-SS-HS-C	815-PL	AC-5B-MD	AC-5SSB-MD
Max Flow	50Hz	lpm	18.9	26.4		22.7	60	
	60Hz	gpm	6	7.5		7	17	
Max Head	50Hz	m	2.5	2.5		4.1	6	
	60Hz	ft (psi)	12.1 (5.23)	12.1 (5.23)		18.6 (8.05)	27 (11.7)	
Inlet			1/2" MPT	3/8" FPT & 3/4" MPT	3/4" MPT	1/2" MPT	1" FPT	
Outlet			1/2" MPT	1/2" MPT	1/2" MPT	1/2" MPT	1/2" MPT	
Max Internal Pressure	psi		50	50	150	50	50	200
	bar		3.4	3.4	10	3.4	3.4	13
Max Liquid Temperature	°F		250	250		250	225	250
	°C		121	121		121	107	121
Packed Weight			2.3/5	2.3/5	2.7/6	2.3/5	4.3/9.5	5.6/12.5
Motor Type			Air Cooled	Air Cooled		Air Cooled	Air Cooled	
Phase			1	1		1	1	
50Hz	115V	Watts - Amps	109 - 1.4	109 - 1.4		129 - 1.4	214 - 2.1	
		Kw - Rpm	0.029 - 2850	0.029 - 2850		0.029 - 2850	0.093 - 2850	
60Hz	115V	Watts - Amps	97 - 1.4	97 - 1.4		122 - 1.4	234 - 2.1	
		Hp - Rpm	1/25 - 3450	1/25 - 3450		1/25 - 3450	1/8 - 3450	
Electrical Connection			Cord	Cord		Cord	Cord	
Motor Type			Air Cooled	Air Cooled		Air Cooled	Air Cooled	
Phase			1	1		1	1	
50Hz	230V	Watts - Amps	110 - 0.7	110 - 0.7		128 - 0.7	223 - 1	
		Kw - Rpm	0.029 - 2850	0.029 - 2850		0.029 - 2850	0.093 - 2850	
60Hz	230V	Watts - Amps	101 - 0.7	101 - 0.7		126 - 0.7	250 - 1	
		Hp - Rpm	1/25 - 3450	1/25 - 3450		1/25 - 3450	1/8 - 3450	
Electrical Connection			Cord	Cord		Cord	Cord	
Overall Pump Dimensions in Inches / cm	Height		3.62 / 9.1	4.37 / 11.0	4.50 / 11.4	3.62 / 9.1	6.19 / 15.7	
	Width		4.88 / 12.3	3.50 / 8.8		4.88 / 12.3	4.52 / 11.4	
	Length		7.75 / 19.6	8.43 / 21.4	8.62 / 21.8	7.75 / 19.6	9.27 / 23.5	



REPAIR PARTS LIST

ITEM	DESCRIPTION	MATERIAL	SIZE (Inches)	QTY.	PART #	809-PL-HS	809-PL-HS-C	809-SS-HS-C	815-PL
1	Screw	Steel	#8-32 x 1 Lg	4	0923-0003-1000	S	S		S
2	Screw	Stainless	#8-32 x 1 Lg	4	0809-0205-1000			S	
3	Pump Housing	Polysulfone	Inline Inlet & Outlet	1	0809-0079-0100	S			S
4	Pump Housing	Polysulfone	Center Inlet	1	0809-0179-0100		S		
5	Hex Nut	Stainless	#8-32	4	0991-0004-1000			S	
6	Pump Housing	Stainless	Center Inlet	1	0809-0150-0000			S	
7	"O" Ring	Silicone	0.070 CS x 2.441 ID	1	0809-0165-1000			S	
8	"O" Ring	Silicone	1/16 CS x 2-3/8 ID	1	0809-0027-1000	S	S		S
9	Thrust Washer	Teflon		1	0809-0043-1000	S	S	S	S
10	Shaft	Stainless		1	0809-0161-1000	S	S	S	S
11	Impeller	Ryton/Teflon/Glass	1-11/16 Dia.	1	0809-0005-0200	S	S	S	
12	Impeller	Ryton/Teflon/Glass	2-5/32 Dia.	1	0809-0107-0200				S
13	Rear Housing	Stainless		1	0809-0012-1000	S	S	S	S
14	Screw	Stainless	#8-32 x 3/8 Lg	4	0135-0040-1000	S	S		S
15	Screw	Stainless	#8-32 x 1 Lg	4	0809-0205-1000			S	
16	Drive Magnet			1	0125-0083-0100	S	S	S	S
17	Screw	Stainless	#8-32 x 3/8 Lg	4	0135-0040-1000	S	S	S	S
18	Washer	Stainless		4	0858-0004-1000	S	S	S	S
19	Motor Bracket	Plastic		1	0809-0058-1000	S	S	S	S
20	Motor 115V, 50/60Hz w/base		6 foot cord with plug	1	0809-0196-1000	S	S	S	S
21	Motor 230V, 50/60Hz w/base*		3 foot cord	1	0809-0124-1000	O	O	O	O
ITEM	DESCRIPTION	MATERIAL	SIZE (Inches)	QTY.	PART #	AC-5B-MD		AC-5SSB-MD	
A	Screw	Stainless	#8-32 x 1-3/4 Lg	7	0150-0021-1000	S		S	
B	Cover	Stainless		1	0150-0111-0000			S	
C	Cover	Polysulfone		1	0150-0189-1000	S			
D	"O" Ring	Buna-N		1	0135-0007-1000	S		S	
E	Thrust Washer	Ceramic		1	0130-0028-1000	S		S	
F	Shaft	Stainless		1	0939-0003-1000	S		S	
G	Impeller w/Stainless Shell	Polysulfone/Stainless		1	0150-0173-0200	S		S	
H	Rear Housing	Stainless		1	0150-0110-0000			S	
I	Rear Housing w/Thrust Washer	Polysulfone/Ceramic		1	0150-0203-0100	S			
J	Drive Magnet	Plastic		1	0150-0081-0100	S		S	
K	Motor Bracket	Plastic		1	0150-0070-0100	S		S	
L	Lock Washer	Stainless	Internal Tooth	4	0802-0006-1000	S		S	
M	Hex Nut	Stainless		4	0625-0024-1000	S		S	
N	Motor 115V, 50/60Hz w/base		3 foot cord	1	0150-0027-1000	S		S	
O	Motor 230V, 50/60Hz w/base*		3 foot cord	1	0150-0040-1000	O		O	

NOTE: Contact Factory for other materials and/or parts not listed.

*Not Shown

Legend: S = Standard, O = Optional