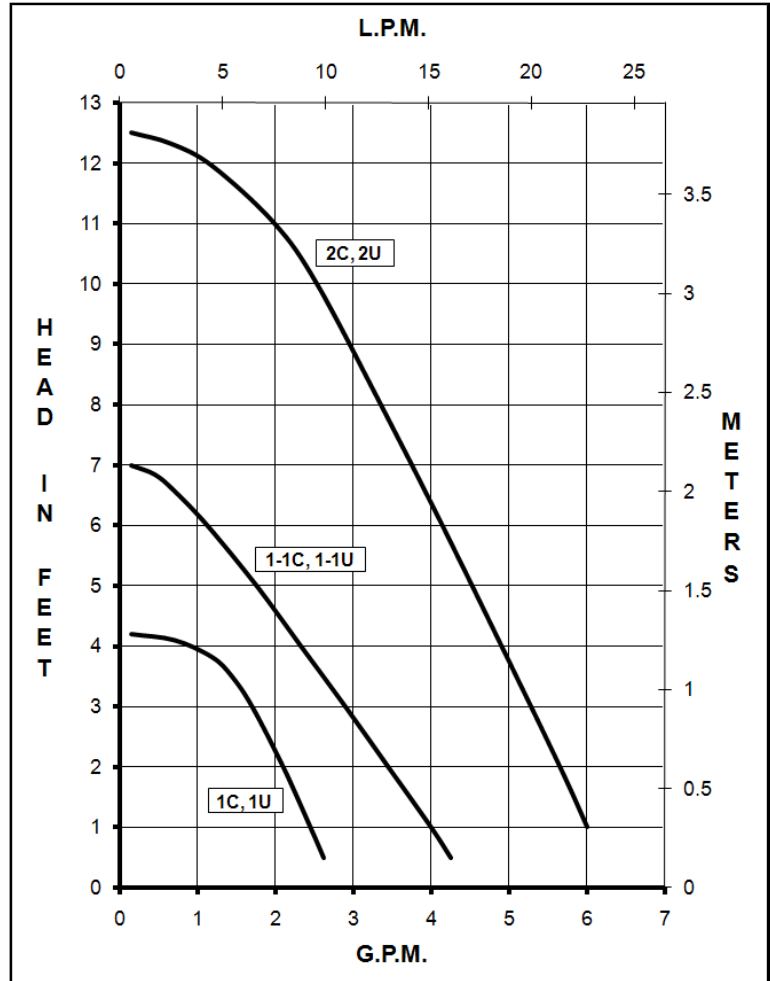
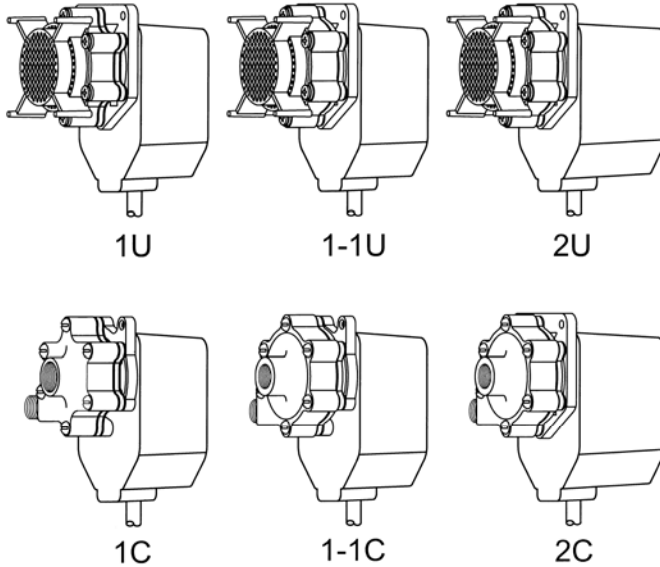




# MARCH PUMPS

1819 PICKWICK AVE., GLENVIEW, IL 60026-1306, U.S.A  
 PHONE: (847) 729-5300 - FAX: (847) 729-7062  
 WWW.MARCHPUMP.COM

## 1U, 1C, 1-1U, 1-1C 2U, 2C Seal Pumps



### MODEL ABBREVIATIONS:

U = Screen Inlet, C = Threaded Inlet

### CONSTRUCTION & SERVICING:

March Sub Pumps (blue color) can be totally SUBMERGED in a variety of liquids. The maroon color epoxy pumps are used in open air. March encapsulates the motor, cord and all pump components, in epoxy leaving no air pockets for vacuum and pressure problems. Epoxy-clad pumps can be operated in any position since there is a double liquid barrier on the electric cord and double thrust washers at both motor bearings. The extra-large rubber seal (spring loaded) also prevents water from flooding the motor.

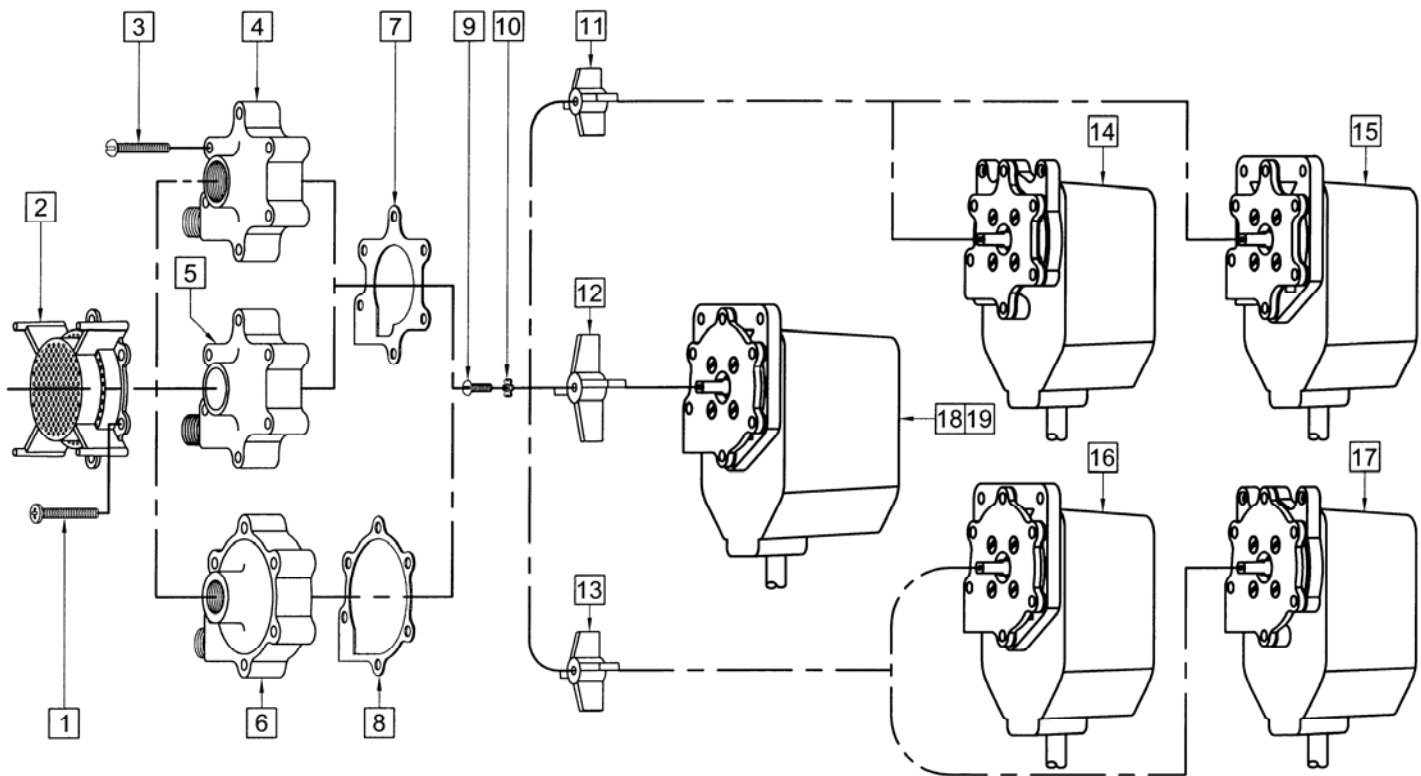
### OPERATION:

Pumps are not self-priming, will not produce a suction lift, and must be installed with a positive flooded suction. Do not allow pump to run dry for longer than 5 minutes. The rubber seal will become scorched and the rubber will harden. The blue colored pumps must be run fully submerged for proper cooling of the motor.

### ELECTRICAL:

Shaded pole motors are available in different electrical configurations such as 115V, 60Hz, and 230V 60Hz, 1 phase A.C. with thermal overload protection. All cord sets are U.L. approved 18/3 wire SJT plastic cord with ground type molded plugs. Standard cord length is 6 feet. The motor and thermal overload combination is U.L. Yellow Card listed under File No. E39859. The motors have C.S.A. recognition under File No. 40072. Models are also available in 230V 60Hz.

| SPECIFICATIONS                         |        |              | 1U                       | 1C          | 1-1U                     | 1-1C        | 2U                       | 2C          |
|--|--------|--------------|--------------------------|-------------|--------------------------|-------------|--------------------------|-------------|
| Max Flow                               | 60Hz   | lpm          | 8.7                      |             | 17                       |             | 24.6                     |             |
|  | 60Hz   | gpm          | 2.3                      |             | 4.5                      |             | 6.5                      |             |
| Max Head                               | 60Hz   | m            | 1.2                      |             | 2.1                      |             | 3.8                      |             |
|  | 60Hz   | ft (psi)     | 4.2 (1.8)                |             | 7 (3.0)                  |             | 12.5 (5.4)               |             |
| Inlet                                  |        |              | Screen                   | 3/8" FPT    | Screen                   | 3/8" FPT    | Screen                   | 3/8" FPT    |
| Outlet                                 |        |              | 1/4" MPT                 |             | 1/4" MPT                 |             | 1/4" MPT                 |             |
| Max Internal Pressure                  | psi    |              | 20                       |             | 20                       |             | 20                       |             |
|  | bar    |              | 1.3                      |             | 1.3                      |             | 1.3                      |             |
| Max Liquid Temperature                 | °F     |              | 130                      |             | 130                      |             | 130                      |             |
|  | °C     |              | 54                       |             | 54                       |             | 54                       |             |
| Packed Weight                          |        |              | 1.4/3                    |             | 1.4/3                    |             | 1.8/4                    |             |
| Motor Type                             |        |              | SUB                      | TE/SUB      | SUB                      | TE/SUB      | SUB                      |             |
| Phase                                  |        |              | 1                        |             | 1                        |             | 1                        |             |
| 60Hz                                   | 115V   | Watts - Amps | 40 - 0.75                |             | 40 - 0.75                |             | 67 - 1.2                 |             |
|  |        | Hp - Rpm     | 1/75 - 3200              |             | 1/75 - 3200              |             | 1/35 - 3200              |             |
| Electrical Connection                  |        |              | 6 ft (1.8 m) Cord w/plug |             | 6 ft (1.8 m) Cord w/plug |             | 6 ft (1.8 m) Cord w/plug |             |
| Motor Type                             |        |              | SUB                      | TE/SUB      | SUB                      | TE/SUB      | SUB                      |             |
| 60Hz                                   | 230V   | Watts - Amps | 40 - 0.37                |             | 40 - 0.37                |             | 67 - 0.60                |             |
|  |        | Hp - Rpm     | 1/75 - 3200              |             | 1/75 - 3200              |             | 1/35 - 3200              |             |
| Electrical Connection                  |        |              | 6 ft (1.8 m) Cord        |             | 6 ft (1.8 m) Cord        |             | 6 ft (1.8 m) Cord        |             |
| Overall Pump Dimensions in Inches / cm | Height |              | 3.71 / 9.4               |             | 3.46 / 8.7               |             | 3.49 / 8.8               |             |
|  | Width  |              | 4.25 / 10.7              | 4.18 / 10.6 | 4.25 / 10.7              | 4.21 / 10.6 | 4.25 / 10.7              |             |
|  | Length |              | 4.59 / 11.6              | 4.10 / 10.4 | 4.59 / 11.6              | 4.25 / 10.7 | 5.03 / 12.7              | 4.66 / 11.8 |



### REPAIR PARTS LIST

| ITEM | DESCRIPTION                       | MATERIAL        | SIZE (Inches)      | QTY. | PART #         | 1U | 1C | 1-1U | 1-1C | 2U | 2C |
|------|-----------------------------------|-----------------|--------------------|------|----------------|----|----|------|------|----|----|
| 1    | Screw                             | Stainless Steel | #8-32 x 1-1/8 Lg.  | 6    | 0115-0023-1000 | S  |    | S    |      | S  |    |
| 2    | Inlet Screen                      | Delrin          |                    | 1    | 0455-0018-1000 | S  |    | S    |      | S  |    |
| 3    | Screw                             | Stainless Steel | #8-32 x 1-1/16 Lg. | 6    | 0455-0039-1000 |    | S  |      | S    |    | S  |
| 4    | Housing                           | Nylon           |                    | 1    | 0445-0004-0000 |    | S  |      |      |    |    |
| 5    | Housing                           | Nylon           |                    | 1    | 0445-0004-1000 | S  |    |      |      |    |    |
| 6    | Housing                           | Nylon           |                    | 1    | 0455-0006-1000 |    |    | S    | S    | S  | S  |
| 7    | Gasket                            | Cork            |                    | 1    | 0445-0003-1000 | S  | S  |      |      |    |    |
| 8    | Gasket                            | Cork            |                    | 1    | 0455-0014-1000 |    |    | S    | S    | S  | S  |
| 9    | Screw                             | Stainless Steel | #6-32 x 3/8 Lg.    | 1    | 0455-0038-1000 | S  | S  | S    | S    | S  | S  |
| 10   | Lock Washer                       | Stainless Steel |                    | 1    | 0455-0037-1000 | S  | S  | S    | S    | S  | S  |
| 11   | Impeller                          | Nylon           | 1.125 Dia.         | 1    | 0445-0001-1000 | S  | S  |      |      |    |    |
| 12   | Impeller                          | Nylon           | 1.812 Dia.         | 1    | 0455-0020-1000 |    |    |      |      | S  | S  |
| 13   | Impeller                          | Nylon           | 1.335 Dia.         | 1    | 0450-0005-1000 |    |    | S    | S    |    |    |
| 14   | Epoxy Sub Assembly (Maroon Epoxy) |                 |                    | n/a  | Not Available  |    | S  |      |      |    |    |
| 15   | Epoxy Sub Assembly (Blue Epoxy)   |                 |                    | n/a  | Not Available  | S  |    |      |      |    |    |
| 16   | Epoxy Sub Assembly (Blue Epoxy)   |                 |                    | n/a  | Not Available  |    |    | S    |      |    |    |
| 17   | Epoxy Sub Assembly (Maroon Epoxy) |                 |                    | n/a  | Not Available  |    |    |      | S    |    |    |
| 18   | Epoxy Sub Assembly (Blue Epoxy)   |                 |                    | n/a  | Not Available  |    |    |      |      | S  |    |
| 19   | Epoxy Sub Assembly (Blue Epoxy)   |                 |                    | n/a  | Not Available  |    |    |      |      |    | S  |

NOTE: Contact Factory for other materials and/or parts not listed.

Legend: S = Standard, O = Optional

### MATERIALS IN CONTACT WITH SOLUTION:

1C, 1-1C, (Open Air) Nylon, Stainless Steel, Viton, Cork & Neoprene Gaskets, Aluminum Bracket

1U, 1-1U, 2C, 2U, (Submerged) Nylon, Delrin, Noryl, Stainless Steel, Viton, Cork & Neoprene Gaskets, Epoxy, Cord

### NOTES:

All specifications & data are based on pumping water & are intended as a guideline only. Specifications may vary with different motors.

### LIMITED WARRANTY:

March pumps are guaranteed only against defects in workmanship or materials for a period of one year from date of manufacture pumping water. For the complete warranty and to register online go to [www.marchpump.com/warranty-registration](http://www.marchpump.com/warranty-registration)