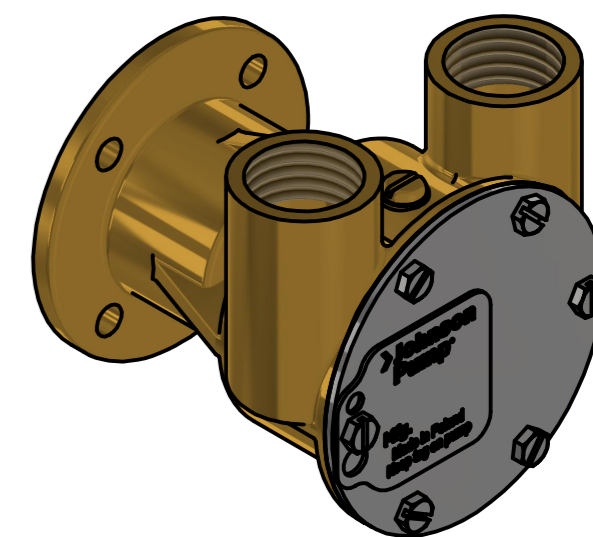
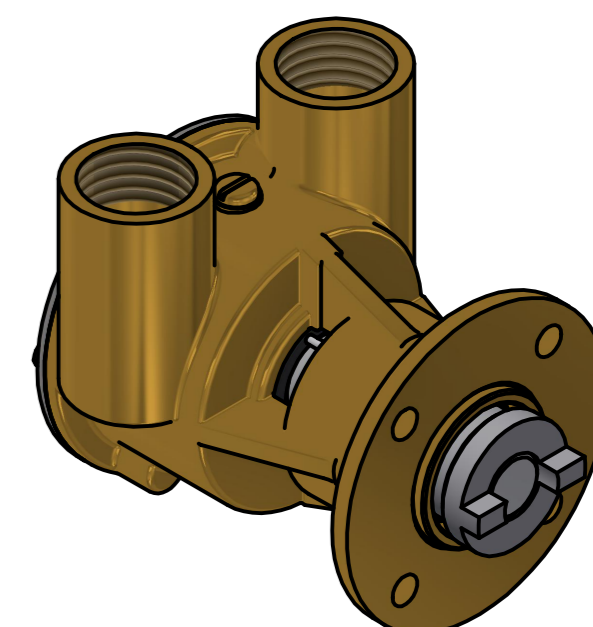
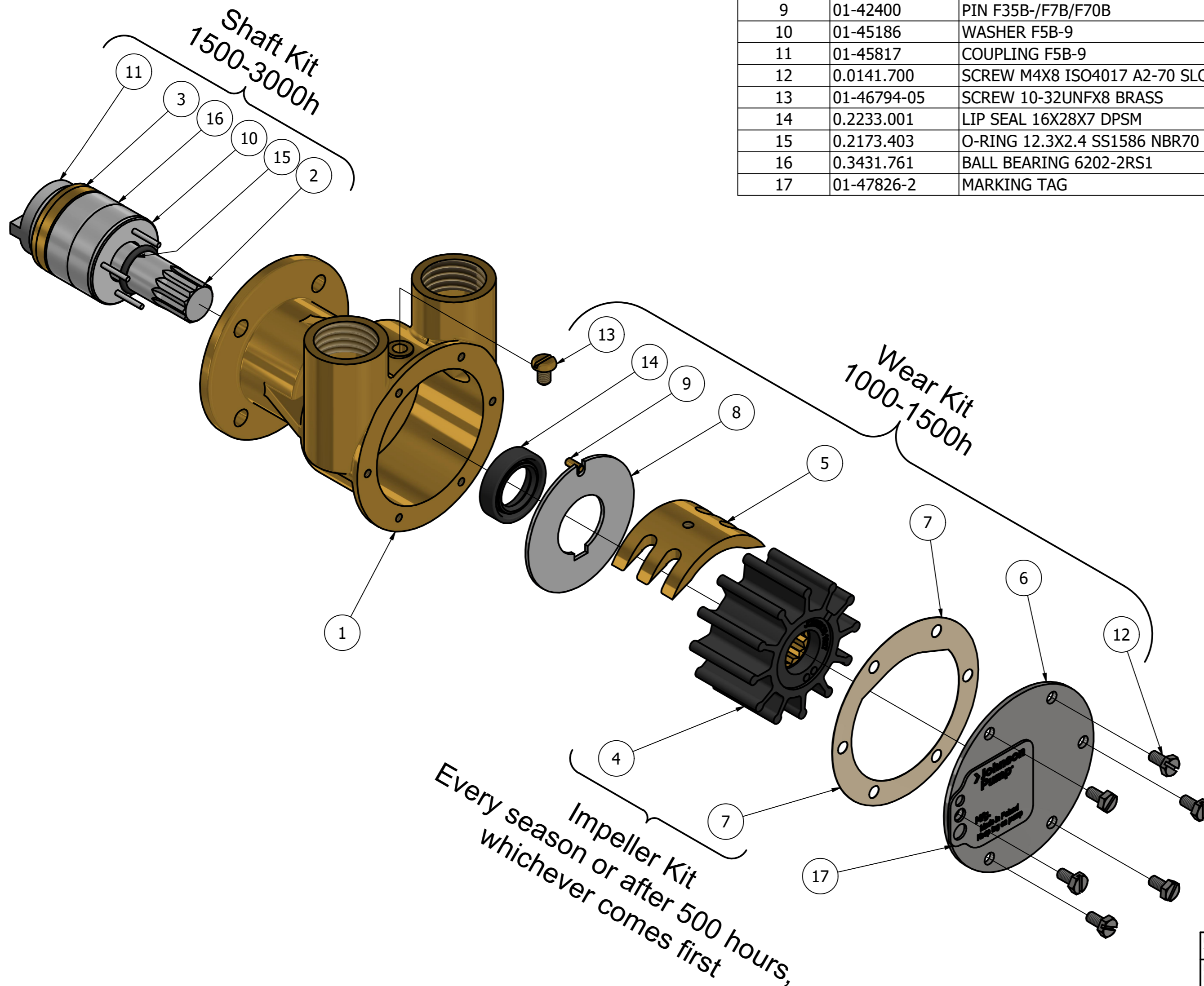


CUSTOMER DETAILS

OEM PUMP PART NO	
MANUFACTURER	TECHNAUTIC
ENGINE	
PUMP DESCRIPTION	F5B-9 IMPELLER PUMP

PART LIST

DRAWING POSITION	COMPONENTS	COMPONENT DESCRIPTION	QTY	IMPELLER KIT	WEAR KIT	SHAFT KIT	SCREW KIT
1	01-24115-1	PUMP BODY F5B-9	1				
2	01-45187	SHAFT F5B-9	1			X	
3	01-45024	GUIDE F5B-9	1			X	
4	08-1027B	IMPELLER F5 NEOPRENE	1	09-1027B-1			
5	01-42397	CAM 1/1 F5B-	1		X		
6	01-47763-1	END COVER F4B-F5B SS	1		X		
7	01-42401	GASKET F5B-	1	09-1027B-1	X		
8	01-42399-2	WEAR PLATE F5B-	1		X		
9	01-42400	PIN F35B-/F7B/F70B	1		X		
10	01-45186	WASHER F5B-9	1			X	
11	01-45817	COUPLING F5B-9	1			X	
12	0.0141.700	SCREW M4X8 ISO4017 A2-70 SLOTTED	6		X		
13	01-46794-05	SCREW 10-32UNFX8 BRASS	1		X		
14	0.2233.001	LIP SEAL 16X28X7 DPSM	1		X		
15	0.2173.403	O-RING 12.3X2.4 SS1586 NBR70	1			X	
16	0.3431.761	BALL BEARING 6202-2RS1	2			X	
17	01-47826-2	MARKING TAG	1				



ISO VIEW

Every season or after 500 hours,
whichever comes first

REVISION HISTORY

ECN	REV	ECN DESCRIPTION	DATE	SIGN
	P01		13.02.2025	Shetty N.

UNLESS OTHERWISE STATED THE FOLLOWING APPLIES:		NAME	DATE	The component or product design and specified according to this drawing must comply with applicable EHS laws and EU-directives	
Drawn	Shetty N.	13-Feb-2025	Master	Status	WorkInProgress
Revised			Material	Type	
Approved	Shetty N.		Weight	N/A	Scale
Material					1:1.25
DIN ISO 13715		PROJECT NUMBER	2652	DESCRIPTION	
Outside edge	+0.25			EXPLODED VIEW OF F5B-9 IMPELLER PUMP	
Inside edge	+0.5			DRAWING NUMBER	
				10-35231-1	
				REVISION	
				P01	