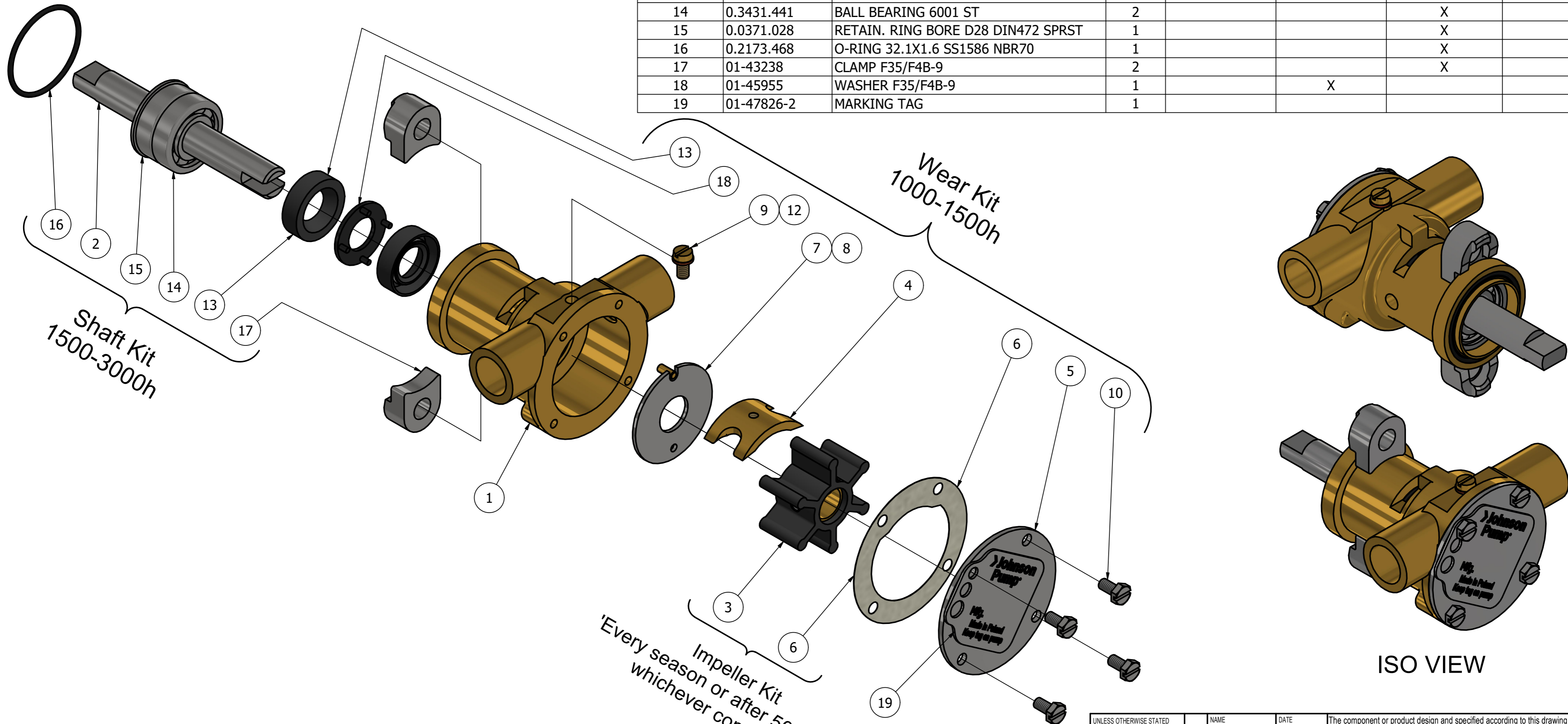


CUSTOMER DETAILS

| | |
|------------------|--------------------------|
| OEM PUMP PART NO | 970300495 |
| MANUFACTURER | NANNI DIESEL |
| ENGINE | 2.40H & 2.60H |
| PUMP DESCRIPTION | F35B-9 IMPELLER PUMP OEM |

PART LIST

| DRAWING POSITION | COMPONENTS | COMPONENT DESCRIPTION | QTY | IMPELLER KIT | WEAR KIT | SHAFT KIT | SCREW KIT |
|------------------|-------------|------------------------------------|-----|--------------|----------|-----------|-----------|
| 1 | 01-35096-2 | PUMP BODY F35B-9 | 1 | | | | |
| 2 | 01-45353 | SHAFT F35/F4B-9 | 1 | | | X | |
| 3 | 08-808B-1 | IMPELLER F35 MC 97 | 1 | 09-808B-1 | | | |
| 4 | 01-42910 | CAM 1/1 F35B | 1 | | X | | |
| 5 | 01-47761-1 | END COVER F35B | 1 | | X | | |
| 6 | 01-43240 | GASKET F35B- | 1 | 09-808B-1 | X | | |
| 7 | 01-46676 | WEAR PLATE F35B- | 1 | | X | | |
| 8 | 01-42400 | PIN F35B-/F7B/F70B | 1 | | X | | |
| 9 | 01-46794-03 | SCREW 8-32UNCX8 | 1 | | X | | |
| 10 | 0.0141.700 | SCREW M4X8 ISO1207 | 4 | | X | | |
| 12 | 01-46790-01 | WASHER D7.5XD4X1 CU | 1 | | X | | |
| 13 | 0.2233.010 | LIP SEAL 12X24X7 DPSM | 2 | | X | X | |
| 14 | 0.3431.441 | BALL BEARING 6001 ST | 2 | | | X | |
| 15 | 0.0371.028 | RETAIN. RING BORE D28 DIN472 SPRST | 1 | | | X | |
| 16 | 0.2173.468 | O-RING 32.1X1.6 SS1586 NBR70 | 1 | | | X | |
| 17 | 01-43238 | CLAMP F35/F4B-9 | 2 | | | X | |
| 18 | 01-45955 | WASHER F35/F4B-9 | 1 | | X | | |
| 19 | 01-47826-2 | MARKING TAG | 1 | | | | |



ISO VIEW

Impeller Kit
Every season or after 500 hours,
whichever comes first

REVISION HISTORY

| ECN | REV | ECN DESCRIPTION | DATE | SIGN |
|-----|-----|-----------------|------------|-----------|
| | P01 | | 26.11.2024 | SHETTY N. |

| | | | | | |
|------------------------------------------------|-----------|--------------|------------------------------------------------------|--------------------------------------------------------------------------------------------------------------------------------|---------------------------|
| UNLESS OTHERWISE STATED THE FOLLOWING APPLIES: | | NAME | DATE | The component or product design and specified according to this drawing must comply with applicable EHS laws and EU-directives | |
| Drawn | SHETTY N. | 26-Nov-2024 | Master | Status | WorkInProgress |
| Revised | | | Project Number | 2652 | PROJECTION METHOD ISO 128 |
| Approved | SHETTY N. | | Type | F35B-9 | SCALE 1:1 |
| Material | | Weight | 0.6 kg | | |
| DIN ISO 13715 | | Outside edge | | Inside edge | |
| | | ±0.25 | | ±0.5 | |
| SPXFLOW Johnson Pump | | | DESCRIPTION EXPLODED VIEW OF F35B-9 IMPELLER PUMP | | |
| DRAWING NUMBER 10-35211-3 | | | REVISION P01 | | |

This Drawing/Document and information shown contains proprietary information of SPX FLOW and must not without permission and written consent be reproduced, copied, transmitted, transferred, disclosed, undue use, shown or handed out to any unauthorized person and is to be maintained in confidence.