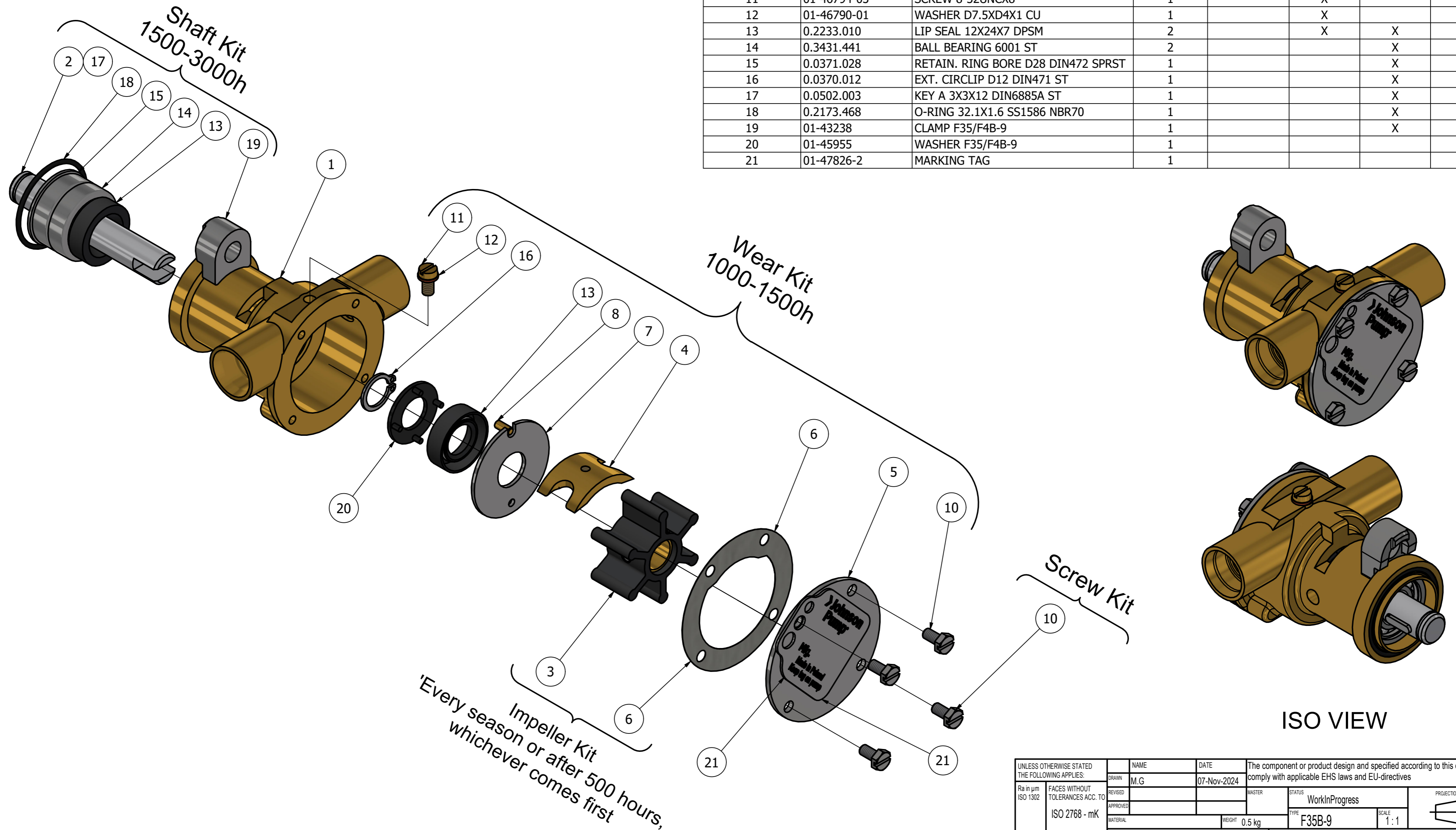


CUSTOMER DETAILS

OEM PUMP PART NO	538.014.1
MANUFACTURER	FARYMANN DIESEL
ENGINE	
PUMP DESCRIPTION	F35B-9 IMPELLER PUMP

PARTS LIST

DRAWING POSITION	COMPONENTS	COMPONENT DESCRIPTION	QTY	IMPELLER KIT	WEAR KIT	SHAFT KIT	SCREW KIT
1	01-35096-2	PUMP BODY F35B-9	1				
2	01-45669	SHAFT F35B-9	1				
3	08-808B-1	IMPELLER F35 MC 97	1	09-808B-1			
4	01-42910	CAM 1/1 F35B-	1		X		
5	01-47761-1	END COVER F35B	1		X		
6	01-43240	GASKET F35B-	1	09-808B-1	X		
7	01-46676	WEAR PLATE F35B-	1		X		
8	01-42400	PIN F35B-/F7B/F70B	1		X		
10	0.0141.700	SCREW M4X8 ISO4017 A2-70 SLOTTED	4		X		09-47553-101
11	01-46794-03	SCREW 8-32UNCX8	1		X		
12	01-46790-01	WASHER D7.5XD4X1 CU	1		X		
13	0.2233.010	LIP SEAL 12X24X7 DPSM	2		X	X	
14	0.3431.441	BALL BEARING 6001 ST	2			X	
15	0.0371.028	RETAIN. RING BORE D28 DIN472 SPRST	1			X	
16	0.0370.012	EXT. CIRCLIP D12 DIN471 ST	1			X	
17	0.0502.003	KEY A 3X3X12 DIN6885A ST	1			X	
18	0.2173.468	O-RING 32.1X1.6 SS1586 NBR70	1			X	
19	01-43238	CLAMP F35/F4B-9	1			X	
20	01-45955	WASHER F35/F4B-9	1				
21	01-47826-2	MARKING TAG	1				



This Drawing/Document and information shown contains proprietary information of SPX FLOW and must not be reproduced, copied, transmitted, transferred, disclosed, undue use, shown or handed out to any unauthorized person and is to be maintained in confidence.

Impeller Kit
Every season or after 500 hours,
whichever comes first

ISO VIEW

REVISION HISTORY				
ECN	REV	ECN DESCRIPTION	DATE	SIGN
	P01			

UNLESS OTHERWISE STATED THE FOLLOWING APPLIES:		NAME	DATE	The component or product design and specified according to this drawing must comply with applicable EHS laws and EU-directives	
Ra in µm	FACES WITHOUT TOLERANCES ACC. TO ISO 2768 - mK	M.G	07-Nov-2024	MASTER	STATUS WorkInProgress
APPROVED					PROJECTION METHOD ISO 128
MATERIAL		WEIGHT	0.5 kg	TYPE	F35B-9
DIN ISO 13715		PROJECT NUMBER	2652	SCALE	1:1
Outside edge	Inside edge	SPXFLOW		DESCRIPTION	
0.25	0.5	Johnson Pump		EXPLODED VIEW OF F35B-9 IMPELLER PUMP	
				DRAWING NUMBER	10-35187-4
				REVISION	P01