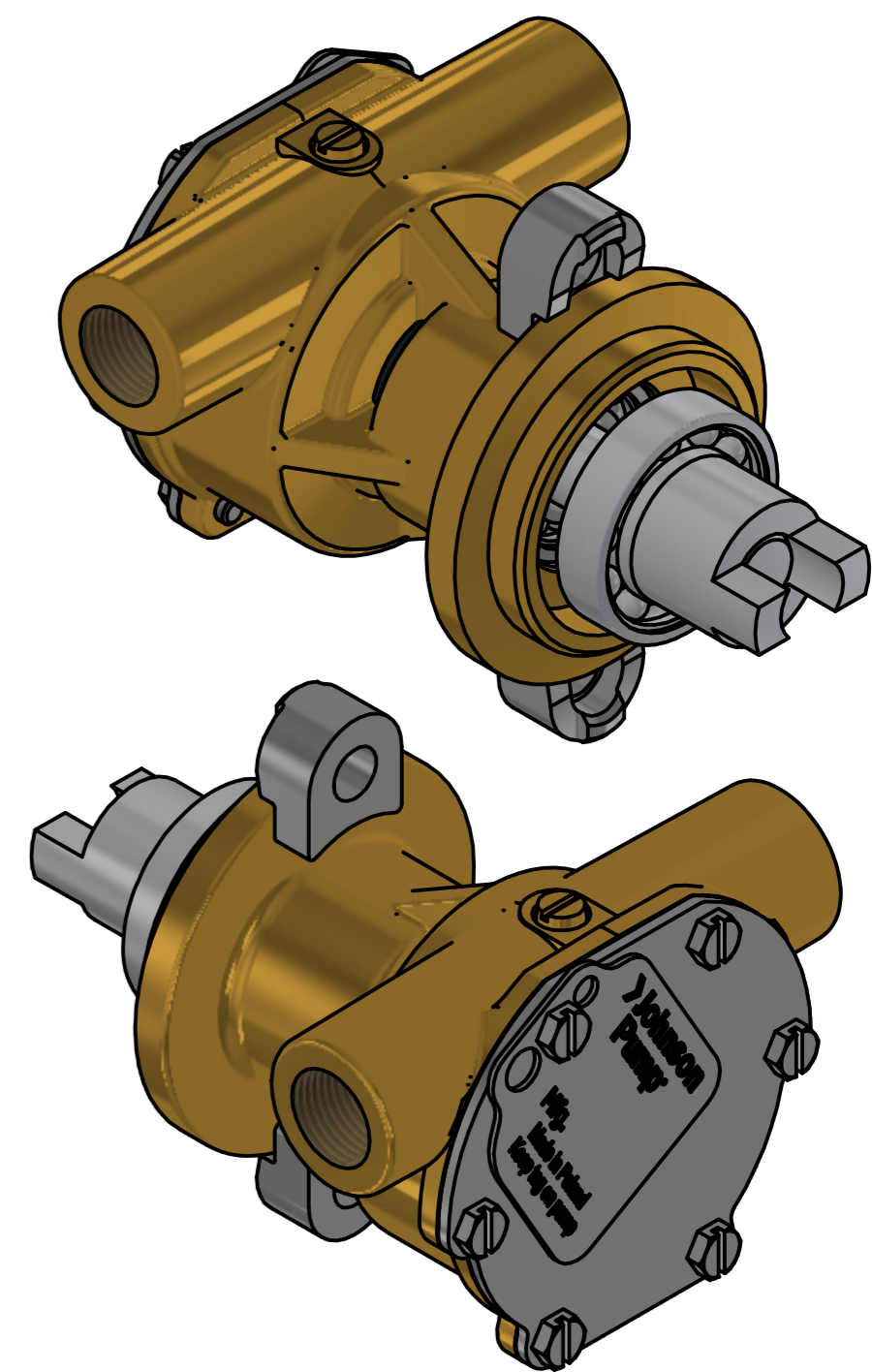
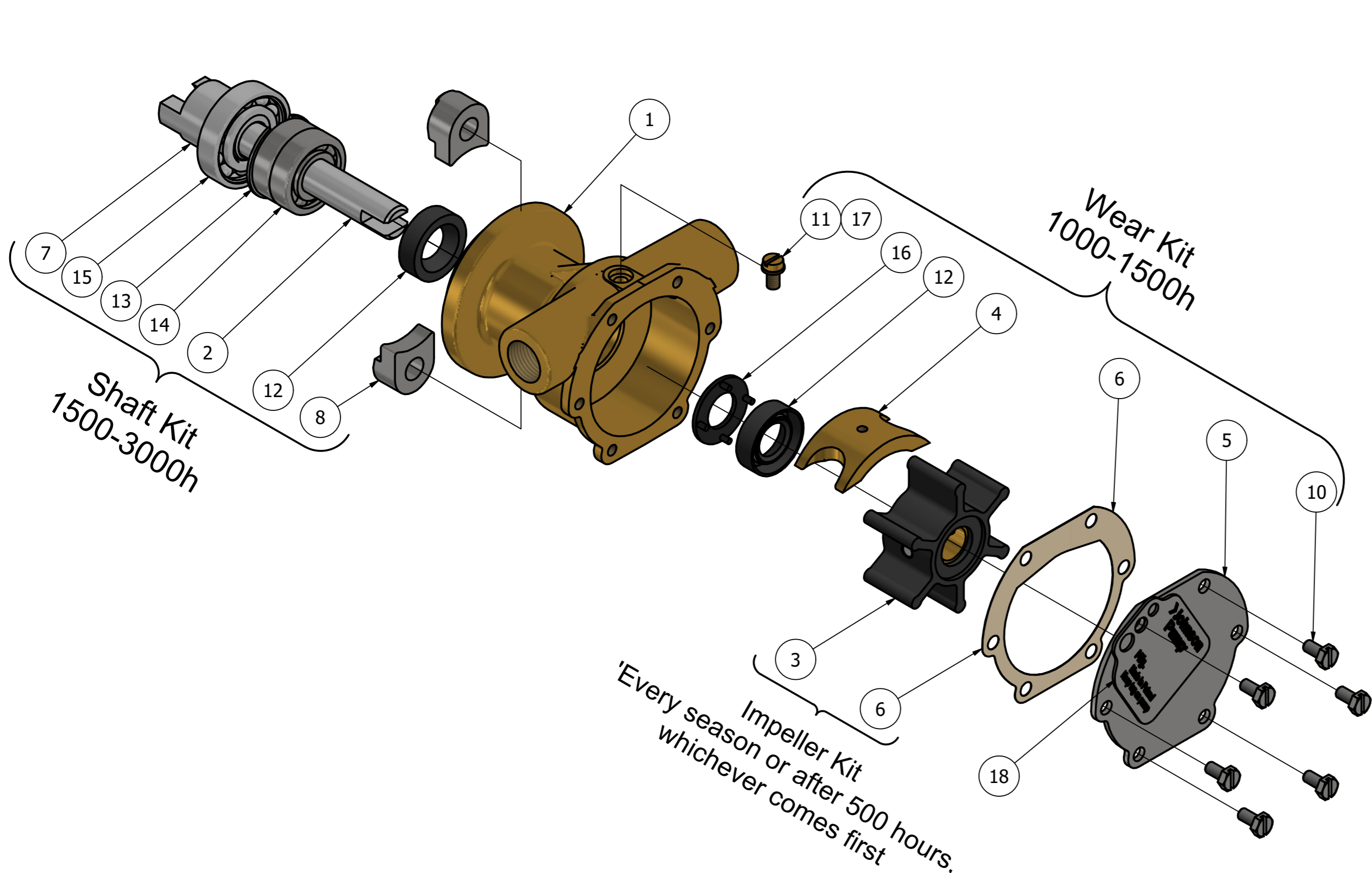


CUSTOMER DETAILS

OEM PUMP PART NO	STM8050
MANUFACTURER	VETUS
ENGINE	K 3/3D/4
PUMP DESCRIPTION	F4B-9 IMPELLER PUMP

PART LIST

DRAWING POSITION	COMPONENTS	COMPONENT DESCRIPTION	QTY	IMPELLER KIT	WEAR KIT	SHAFT KIT	SCREW KIT
1	01-35099-2	PUMP BODY F4B-9	1				
2	01-45832	SHAFT F4B-9	1			X	
3	08-810B-1	IMPELLER F4 MC 97	1	09-810B-1			
4	01-42389	CAM 1/1 F4B	1		X		
5	01-47764-1	END COVER F4B-9	1		X		
6	01-45284	GASKET F4B-9	1	09-810B-1	X		
7	01-45831	ECCENTRIC SLEEVE F4B-9	1			X	
8	01-43238	CLAMP F35/F4B-9	2			X	
10	0.0141.700	SCREW M4X8 ISO4017 A2-70 SLOTTED	6		X		
11	01-46794-03	SCREW 8-32UNCX8	1		X		
12	0.2233.010	LIP SEAL 12X24X7 DPSM	2		X	X	
13	0.0371.028	RETAIN. RING BORE D28 DIN472 SPRST	1			X	
14	0.3431.441	BALL BEARING 6001 ST	2			X	
15	0.3431.204	BALL BEARING 16003 ST	1			X	
16	01-45955	WASHER F35/F4B-9	1		X		
17	01-46790-01	WASHER D7.5XD4X1 CU	1		X		
18	01-47826-2	MARKING TAG	1				



ISO VIEW

REVISION HISTORY				
ECN	REV	ECN DESCRIPTION	DATE	SIGN
	P01			

UNLESS OTHERWISE STATED THE FOLLOWING APPLIES:		NAME	DATE	The component or product design and specified according to this drawing must comply with applicable EHS laws and EU-directives	
Ra in µm	FACES WITHOUT TOLERANCES ACC. TO ISO 1302	SHETTY N.	11/25/2024	PROJECT NUMBER	2652
ISO 2768 - mK		APPROVED		STATUS	WorkInProgress
		MATERIAL		WEIGHT	0.9 kg
				TYPE	F4B-9
				SCALE	1:1.25
DIN ISO 13715 Outside edge Ra 0.25 Inside edge Ra 0.5		SPXFLOW Johnson Pump		DESCRIPTION EXPLODED VIEW OF F4B-9 IMPELLER PUMP	
				DRAWING NUMBER	10-35161-1
				REVISION	P01

This Drawing/Document and information shown contains proprietary information of SPX FLOW and must not without permission and written consent be reproduced, copied, transmitted, transferred, disclosed, undue use, shown or handed out to any unauthorized person and is to be maintained in confidence.