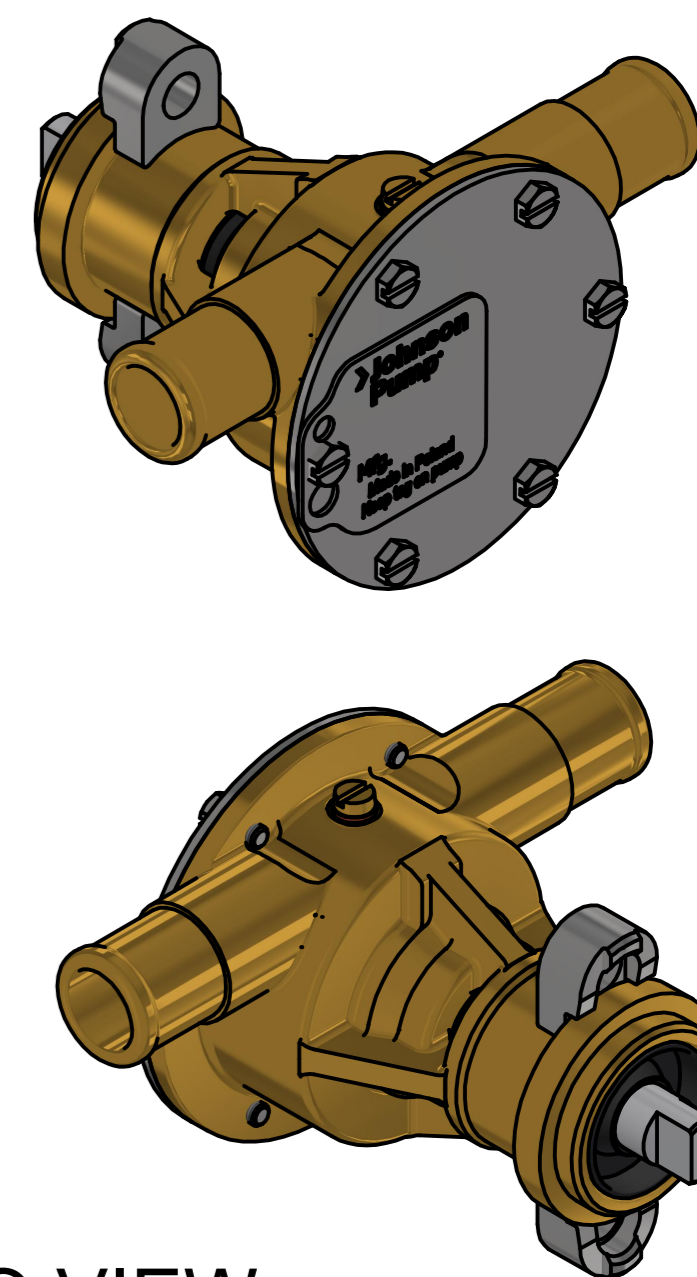
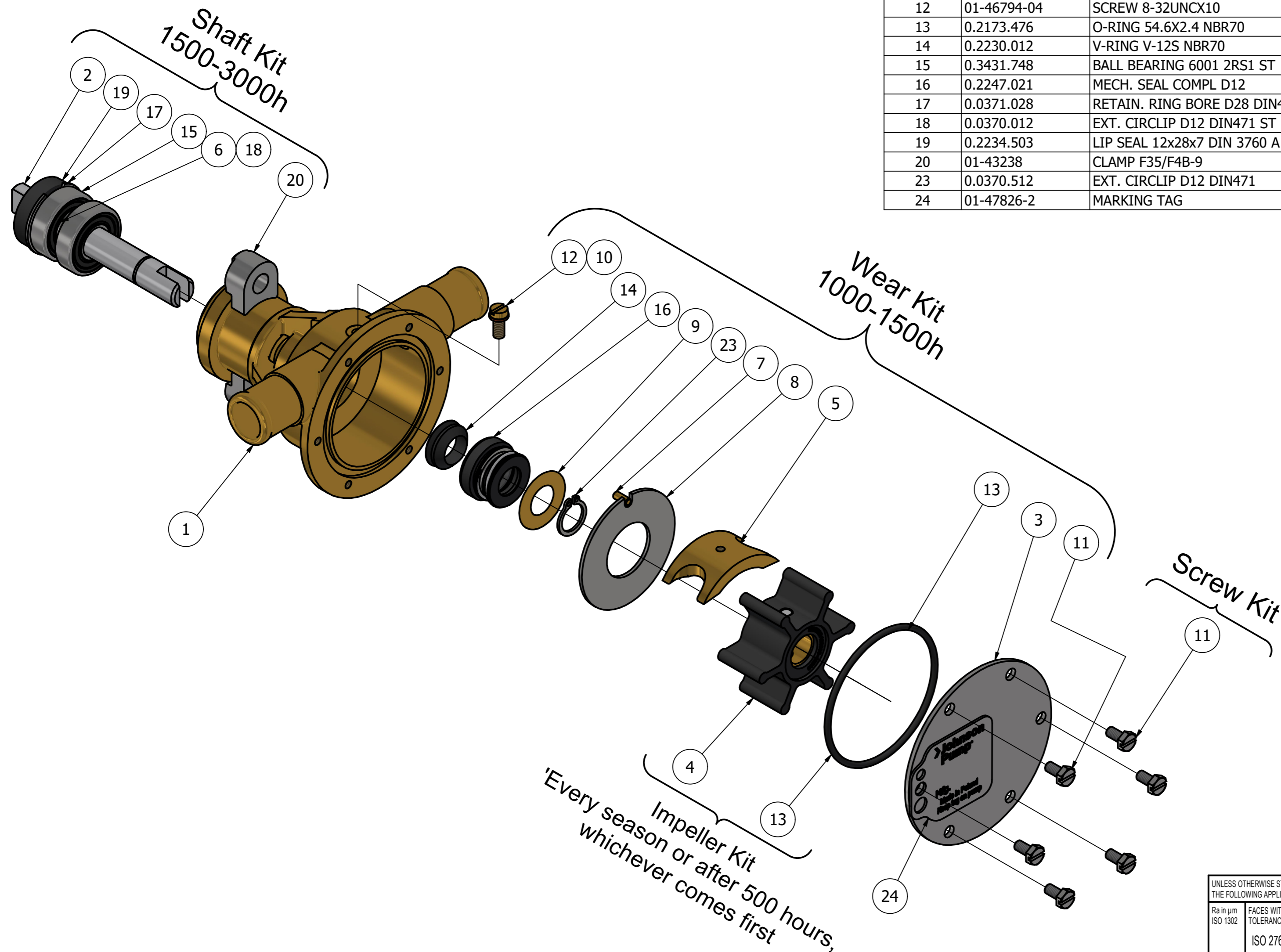


CUSTOMER DETAILS

OEM PUMP PART NO	207-29145
MANUFACTURER	BETA MARINE
ENGINE	Beta 10 - 10hp, Beta 14 - 13,5hp, Beta 16 - 16hp, Beta 20 - 20hp, Beta 25 - 25hp, Beta 28 - 28hp, Beta 35 - 35hp, Beta 38 - 37,5bhp
PUMP DESCRIPTION	F4B-9 IMPELLER PUMP

PARTS LIST

DRAWING POSITION	COMPONENTS	COMPONENT DESCRIPTION	QTY	IMPELLER KIT	WEAR KIT	SHAFT KIT	SCREW KIT
1	01-24992-1	PUMP BODY CASTING F4B-9 (BETA MAR.)	1				
2	01-46916	SHAFT F4B-9	1			09-47803	
3	01-47763-1	END COVER F4/F5B NEUTRAL	1		09-47802		
4	08-810B-1	IMPELLER F4 MC 97	1	09-810B-1			
5	01-42389	CAM 1/1 F4B	1		09-47802		
6	01-45542	SPACER D12X16X4.3	1			09-47803	
7	01-42400	PIN F35B-/F7B/F70B	1		09-47802		
8	01-46737-2	WEAR PLATE F4B	1		09-47802		
9	01-45659	WASHER F4B-8/-9	1		09-47802		
10	01-46790-01	WASHER D7,5XD4X1 CU	1		09-47802		
11	0.0141.700	TAP BOLT M4X8 ISO4017 A2-70	6		09-47802		09-47553-101
12	01-46794-04	SCREW 8-32UNCX10	1		09-47802		
13	0.2173.476	O-RING 54.6X2.4 NBR70	1	09-810B-1	09-47802		
14	0.2230.012	V-RING V-12S NBR70	1		09-47802		
15	0.3431.748	BALL BEARING 6001 2RS1 ST	2			09-47803	
16	0.2247.021	MECH. SEAL COMPL D12	1		09-47802		
17	0.0371.028	RETAIN. RING BORE D28 DIN472 SPRST	1			09-47803	
18	0.0370.012	EXT. CIRCLIP D12 DIN471 ST	1			09-47803	
19	0.2234.503	LIP SEAL 12x28x7 DIN 3760 A FPM	1			09-47803	
20	01-43238	CLAMP F35/F4B-9	2			09-47803	
23	0.0370.512	EXT. CIRCLIP D12 DIN471	1		09-47802		
24	01-47826-2	MARKING TAG	1				



ISO VIEW

Every season or after 500 hours, whichever comes first

REVISION HISTORY

ECN	REV	ECN DESCRIPTION	DATE	SIGN
	P01		19-Nov-2024	

UNLESS OTHERWISE STATED THE FOLLOWING APPLIES:		NAME	DATE	The component or product design and specified according to this drawing must comply with applicable EHS laws and EU-directives	
Ra in µm ISO 1302	FACES WITHOUT TOLERANCES ACC. TO ISO 2768 - mK	M.G	19-Nov-2024	MASTER	STATUS WorkInProgress
DIN ISO 13715 Outside edge ±0.25 Inside edge ±0.5		PROJECT NUMBER	2652	WEIGHT	N/A
SPXFLOW Johnson Pump		DESCRIPTION		SCALE	1:1.25
		EXPLODED VIEW OF F4B-9 IMPELLER PUMP		TYPE	F4B-9
		DRAWING NUMBER		10-24629-11	REVISION
					P01

This Drawing/Document and information shown contains proprietary information of SPX FLOW and must not without permission and written consent be reproduced, copied, transmitted, transferred, disclosed, undue use, shown or handed out to any unauthorized person and is to be maintained in confidence.