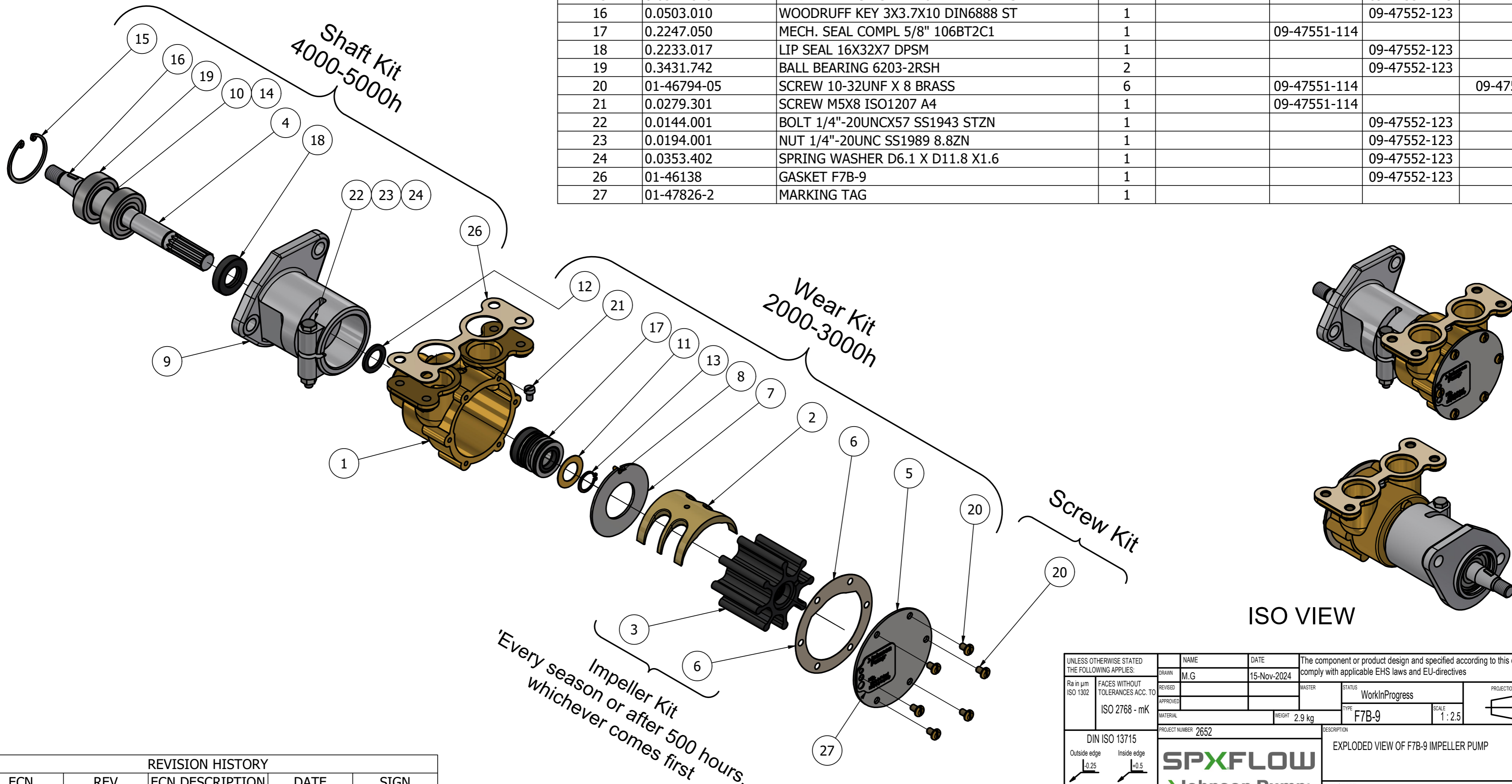


CUSTOMER DETAILS

OEM PUMP PART NO	4229524 & 3838288
MANUFACTURER	DEUTZ & VOLVO PENTA
ENGINE	1013 & D7
PUMP DESCRIPTION	F7B-9 IMPELLER PUMP

PART LIST

DRAWING POSITION	COMPONENTS	COMPONENT DESCRIPTION	QTY	IMPELLER KIT	WEAR KIT	SHAFT KIT	SCREW KIT
1	01-22151-3	PUMP BODY F7B-9	1				
2	01-46899	CAM 1/1 F7B	1			09-47551-114	
3	08-1028BT-1	IMPELLER F7 MC 97 THREAD	1	09-1028BT-1			
4	01-35897	SHAFT F7B-9	1			09-47552-123	
5	01-47769-1	END COVER F7B-	1		09-47551-114		
6	01-42445	GASKET F4B/F7B-	1	09-1028BT-1	09-47551-114		
7	01-47725	WEAR PLATE F75B-9	1		09-47551-114		
8	01-42400	PIN F35B-/F7B/F70B	1		09-47551-114		
9	01-24579-1	BEARING HOUSING F7B-9	1				
10	38-80963	SPACER F7B-9/RBS4	1			09-47552-123	
11	01-45680	WASHER F5B/F6B/F7B	1		09-47551-114		
12	01-42402	SLINGER F5/F7B-	1		09-47551-114		
13	0.0370.516	EXT. CIRCLIP D16 DIN471 PHB	1		09-47551-114		
14	0.0370.017	RETAIN. RING SHAFT D17 DIN471 SPRST	1			09-47552-123	
15	0.0371.040	RETAIN. RING BORE D40 DIN472 SPRST	1			09-47552-123	
16	0.0503.010	WOODRUFF KEY 3X3.7X10 DIN6888 ST	1			09-47552-123	
17	0.2247.050	MECH. SEAL COMPL 5/8" 106BT2C1	1		09-47551-114		
18	0.2233.017	LIP SEAL 16X32X7 DPSM	1			09-47552-123	
19	0.3431.742	BALL BEARING 6203-2RSH	2			09-47552-123	
20	01-46794-05	SCREW 10-32UNF X 8 BRASS	6		09-47551-114		09-47553-106
21	0.0279.301	SCREW M5X8 ISO1207 A4	1		09-47551-114		
22	0.0144.001	BOLT 1/4"-20UNCX57 SS1943 STZN	1			09-47552-123	
23	0.0194.001	NUT 1/4"-20UNC SS1989 8.8ZN	1			09-47552-123	
24	0.0353.402	SPRING WASHER D6.1 X D11.8 X1.6	1			09-47552-123	
26	01-46138	GASKET F7B-9	1			09-47552-123	
27	01-47826-2	MARKING TAG	1				



This Drawing/Document and information shown contains proprietary information of SPX FLOW and must not without permission and written consent be reproduced, copied, transmitted, transferred, disclosed, undue use, shown or handed out to any unauthorized person and is to be maintained in confidence.

REVISION HISTORY				
ECN	REV	ECN DESCRIPTION	DATE	SIGN
	P01			

UNLESS OTHERWISE STATED THE FOLLOWING APPLIES:		NAME	DATE	The component or product design and specified according to this drawing must comply with applicable EHS laws and EU-directives	
Ra in µm	FACES WITHOUT TOLERANCES ACC. TO ISO 2768 - mK	M.G	15-Nov-2024	MASTER	STATUS WorkInProgress
ISO 1302		APPROVED			PROJECTION METHOD ISO 128
		MATERIAL	WEIGHT 2.9 kg	TYPE F7B-9	SCALE 1:2.5
DIN ISO 13715		PROJECT NUMBER 2652	DESCRIPTION EXPLODED VIEW OF F7B-9 IMPELLER PUMP		
Outside edge	Inside edge	SPXFLOW		DRAWING NUMBER 10-24580-11	
±0.25	±0.5	Johnson Pump		REVISION P01	