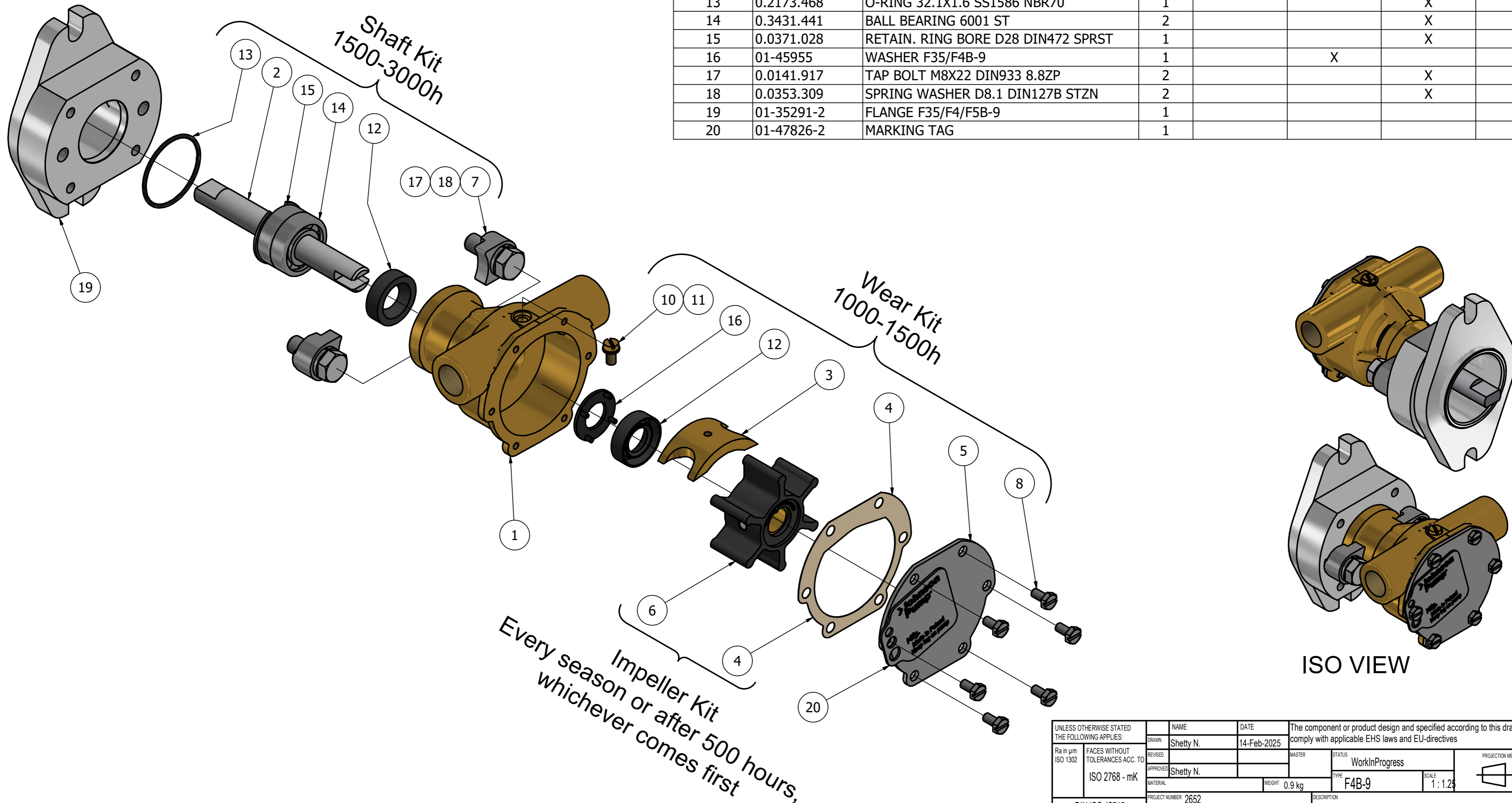


CUSTOMER DETAILS

OEM PUMP PART NO	
MANUFACTURER	DIECON & F J FAY & KUBOTA ASTR
ENGINE	D1105, D90 & D905BG2 & UNKNOWN
PUMP DESCRIPTION	F4B-9 IMPELLER PUMP

PART LIST

DRAWING POSITION	COMPONENTS	COMPONENT DESCRIPTION	QTY	IMPELLER KIT	WEAR KIT	SHAFT KIT	SCREW KIT
1	01-35239	PUMP BODY F4B-9	1				
2	01-46563	SHAFT F4B-9	1			X	
3	01-42389	CAM 1/1 F4B	1		X		
4	01-45284	GASKET F4B-9	1	09-810B-1	X		
5	01-47764-1	END COVER F4B-F5B	1		X		
6	08-810B-1	IMPELLER F4 MC 97	1	09-810B-1			
7	01-43238	CLAMP F35/F4B-9	2			X	
8	0.0141.700	SCREW M4X8 ISO4017 A2-70 SLOTTED	6		X		
10	01-46794-03	SCREW 8-32UNCX8	1		X		
11	01-46790-01	WASHER D7.5XD4X1 CU	1		X		
12	0.2233.010	LIP SEAL 12X24X7 DPSM	2		X	X	
13	0.2173.468	O-RING 32.1X1.6 SS1586 NBR70	1			X	
14	0.3431.441	BALL BEARING 6001 ST	2			X	
15	0.0371.028	RETAIN. RING BORE D28 DIN472 SPRST	1			X	
16	01-45955	WASHER F35/F4B-9	1		X		
17	0.0141.917	TAP BOLT M8X22 DIN933 8.8ZP	2			X	
18	0.0353.309	SPRING WASHER D8.1 DIN127B STZN	2			X	
19	01-35291-2	FLANGE F35/F4/F5B-9	1				
20	01-47826-2	MARKING TAG	1				



ISO VIEW

Every season or after 500 hours,
whichever comes first

REVISION HISTORY

ECN	REV	ECN DESCRIPTION	DATE	SIGN
	P01		14.02.2025	

UNLESS OTHERWISE STATED THE FOLLOWING APPLIES:		NAME	DATE	The component or product design and specified according to this drawing must comply with applicable EHS laws and EU-directives	
Drawn	Shetty N.	14-Feb-2025	Master	Status	WorkInProgress
Revised					
Approved	Shetty N.			Type	F4B-9
Material		Weight	0.9 kg	Scale	1:1.25
DIN ISO 13715		PROJECT NUMBER	2652	DESCRIPTION	
Outside edge	±0.25			EXPLODED VIEW OF F4B-9 IMPELLER PUMP	
Inside edge	±0.5			DRAWING NUMBER	
				10-24514-01	
				REVISION	
				P01	

This Drawing/Document and information shown contains proprietary information of SPX FLOW and must not without permission and written consent be reproduced, copied, transmitted, transferred, disclosed, undue use, shown or handed out to any unauthorized person and is to be maintained in confidence.