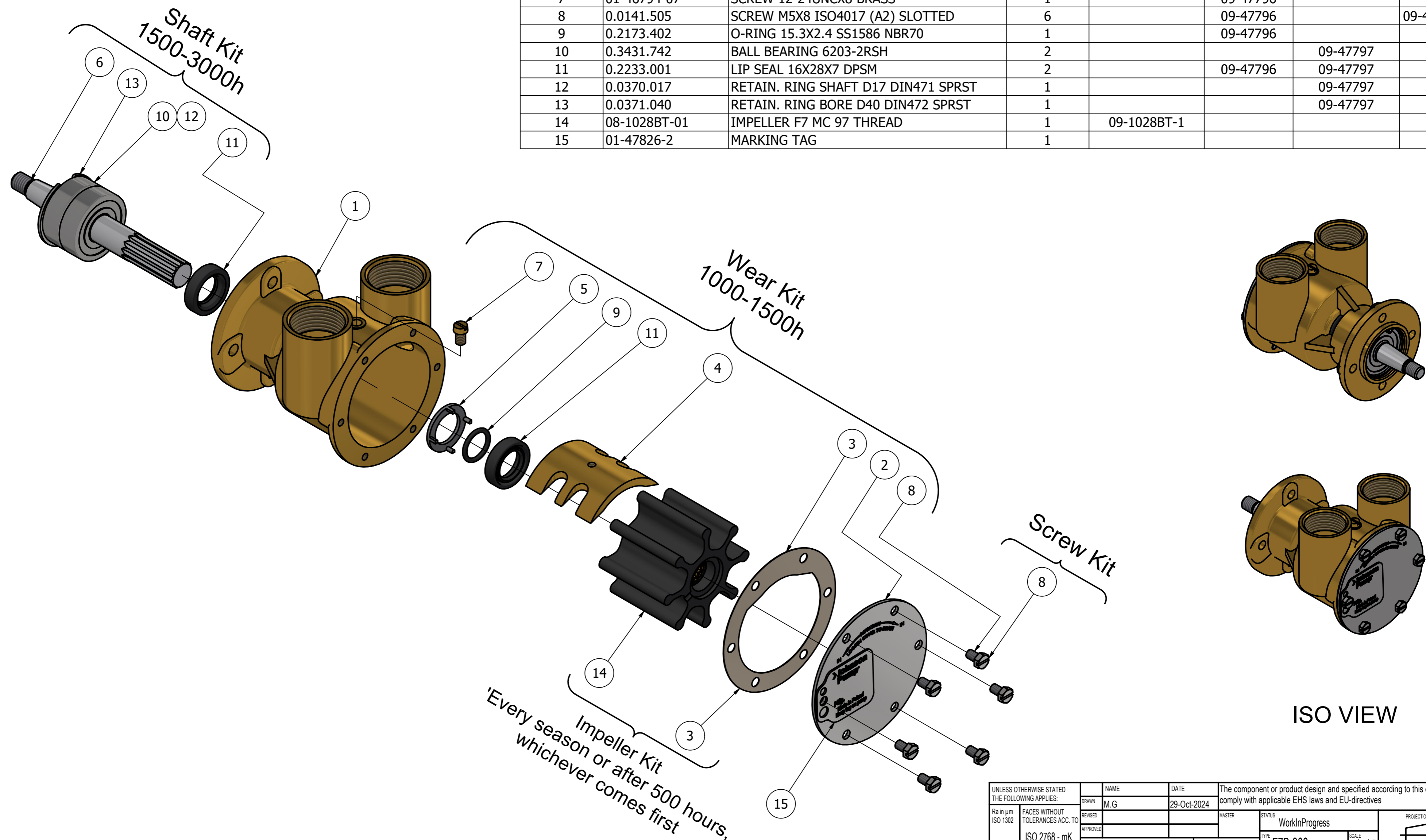


CUSTOMER DETAILS

OEM PUMP PART NO	65844400
MANUFACTURER	LOMBARDINI
ENGINE	GENSET V3800, LDW 2204 MD
PUMP DESCRIPTION	F7B-903 IMPELLER PUMP

PART LIST

DRAWING POSITION	COMPONENTS	COMPONENT DESCRIPTION	QTY	IMPELLER KIT	WEAR KIT	SHAFT KIT	SCREW KIT
1	01-24474-1	PUMP BODY F7B-9	1				
2	01-47769-1	END COVER F7B	1		09-47796		
3	01-42445	GASKET F4B/F7B	1	09-1028BT-1	09-47796		
4	01-42442	CAM 2/3 F7B/F70B	1		09-47796		
5	01-45181	WASHER F5/F7B-9	1		09-47796		
6	01-46476	SHAFT F7B-9	1			09-47797	
7	01-46794-07	SCREW 12-24UNCX8 BRASS	1		09-47796		
8	0.0141.505	SCREW M5X8 ISO4017 (A2) SLOTTED	6		09-47796		09-47553-105
9	0.2173.402	O-RING 15.3X2.4 SS1586 NBR70	1		09-47796		
10	0.3431.742	BALL BEARING 6203-2RSH	2			09-47797	
11	0.2233.001	LIP SEAL 16X28X7 DPSM	2		09-47796	09-47797	
12	0.0370.017	RETAIN. RING SHAFT D17 DIN471 SPRST	1			09-47797	
13	0.0371.040	RETAIN. RING BORE D40 DIN472 SPRST	1			09-47797	
14	08-1028BT-01	IMPELLER F7 MC 97 THREAD	1	09-1028BT-1			
15	01-47826-2	MARKING TAG	1				



ISO VIEW

REVISION HISTORY

ECN	REV	ECN DESCRIPTION	DATE	SIGN
	P01		20.02.2025	

UNLESS OTHERWISE STATED THE FOLLOWING APPLIES:		NAME	DATE	The component or product design and specified according to this drawing must comply with applicable EHS laws and EU-directives	
Ra in µm	FACES WITHOUT TOLERANCES ACC. TO ISO 2768 - mK	M.G	29-Oct-2024	MASTER	STATUS WorkInProgress
ISO 1302					PROJECTION METHOD ISO 128
				WEIGHT 1.8 kg	TYPE F7B-903
					SCALE 1:1.5
DIN ISO 13715		PROJECT NUMBER 2652	DESCRIPTION EXPLODED VIEW OF F7B-903 IMPELLER PUMP		
Outside edge	Inside edge	SPXFLOW		DRAWING NUMBER 10-24475-12	
0.25	0.5	Johnson Pump		REVISION P01	

This Drawing/Document and information shown contains proprietary information of SPX FLOW and must not without permission and written consent be reproduced, copied, transmitted, transferred, disclosed, undue use, shown or handed out to any unauthorized person and is to be maintained in confidence.