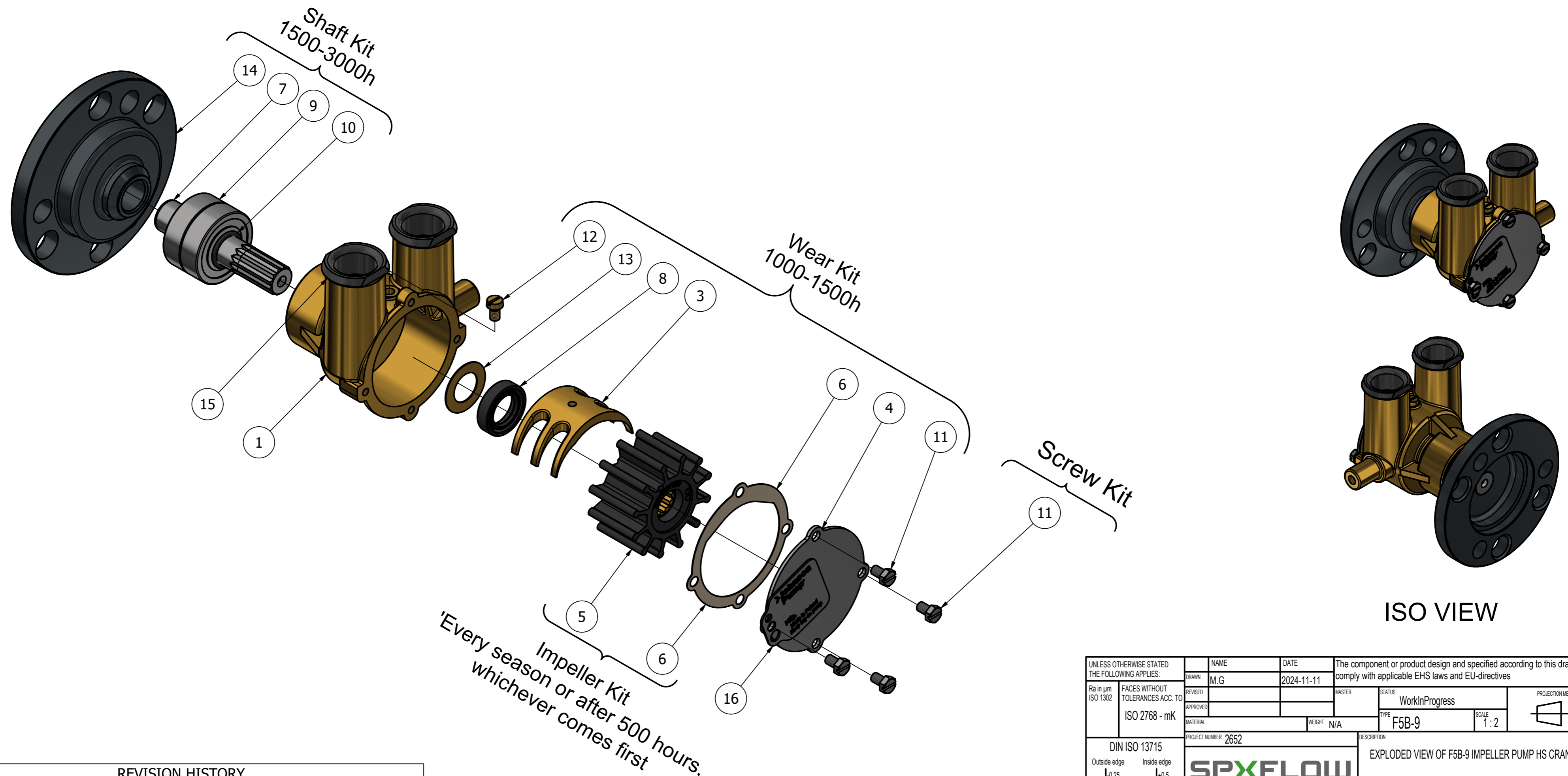


CUSTOMER DETAILS	
OEM PUMP PART NO	VP 3860703, 856513 & SEVERAL UNKNOWN
MANUFACTURER	Alaska Diesel,CT Marine,Flagship,Marine Exhaust/Power,Panther Marine,Tingbrand,York Power,Volvo Penta
ENGINE	M4219, L4219, M439, L439, M4276, L4276, M4239, L4239, M6414, L6414, M445, L445, M668, L668, FD 80, 350, 4 cyl, 350, 200 TMB, 270 TMB, 225 TMB, 310 TMB, 4 cyl, AQ200C, AQ200D, Q205A, AQ205LB, AQ211A, AQ225A, AQ225B, AQ225C, AQ225D, AQ225F, AQ255A, AQ255B, AQ311A, AQ225E, AQ290A, 430A, 430B, 431A, 431B, 432A, 434A, 500A, 500B, 501A, 501B, 570A, 571A, 572A, 740A, 740B, AQ175A, AQ200F, AQ205A, AQ210A, AQ231A, AQ231B, AQ260A, AQ260B, AQ271A, AQ271B, AQ271C, AQ271D, AQ280A, AQ311B, BB225A, BB225AV, BB225B, BB225C, BB231A, BB260A, BB260AV, BB260B, BB260C, BB261A
PUMP DESCRIPTION	F5B-9 IMPELLER PUMP HS CRANKSHAFT OEM

PART LIST									
DRAWING POSITION	COMPONENTS	COMPONENT DESCRIPTION	QTY	IMPELLER KIT	WEAR KIT	SHAFT KIT	SCREW KIT		
1	01-24229	PUMP BODY F5B-9	1						
3	01-45329	CAM 1/1 F5B-9	1		09-47831-01				
4	01-47765-1	END COVER F5B/F6B-9	1		09-47831-01				
5	08-1027B	IMPELLER F5 NEOPRENE	1	09-1027B-1					
6	01-45315	GASKET F5B/F6B-9	1	09-1027B-1	09-47831-01				
7	01-45681	SHAFT F5B/F6B-9	1			09-47832-01			
8	0.2233.416	LIP SEAL NT 4502 ADP (16X28X7)	1		09-47831-01				
9	0.3431.742	BALL BEARING 6203-2RSH	2			09-47832-01			
10	0.2173.402	O-RING 15.3X2.4 SS1586 NBR70	1			09-47832-01			
11	0.0141.505	SCREW M5X8 ISO4017 (A2) SLOTTED	4		09-47831-01				09-47553-105
12	0.0279.033	SCREW M5X8 ISO1207 BRASS	1		09-47831-01				
13	01-45680	WASHER F5B/F6B/F7B	1		09-47831-01				
14	01-35199	CARRIER F5/F6/F7B-9	1			09-47832-01			
15	01-45953	HOSE BUSHING F5/F6B-9	2						
16	01-47826-2	MARKING TAG	1						



Every season or after 500 hours, whichever comes first

ISO VIEW

REVISION HISTORY				
ECN	REV	ECN DESCRIPTION	DATE	SIGN
	P01		11-Nov-2024	

UNLESS OTHERWISE STATED THE FOLLOWING APPLIES:		NAME	DATE	The component or product design and specified according to this drawing must comply with applicable EHS laws and EU-directives	
Ra in µm ISO 1302	FACES WITHOUT TOLERANCES ACC. TO ISO 2768 - mK	M.G	2024-11-11	MASTER	STATUS WorkInProgress
					PROJECTION METHOD ISO 128
				WEIGHT N/A	TYPE F5B-9
					SCALE 1:2
DIN ISO 13715		PROJECT NUMBER 2652		DESCRIPTION	
Outside edge	Inside edge			EXPLODED VIEW OF F5B-9 IMPELLER PUMP HS CRANKSHAFT	
±0.25	±0.5			DRAWING NUMBER 10-24228-1	
				REVISION P01	

This Drawing/Document and information shown contains proprietary information of SPX FLOW and must not without permission and written consent be reproduced, copied, transmitted, transferred, disclosed, undue use, shown or handed out to any unauthorized person and is to be maintained in confidence.