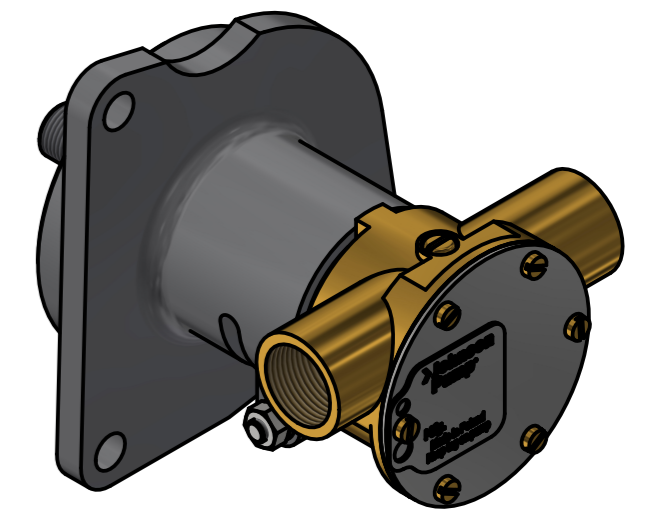
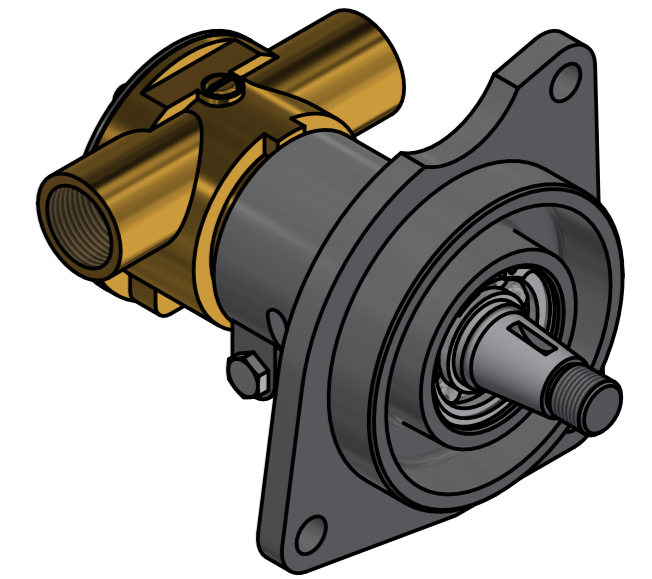
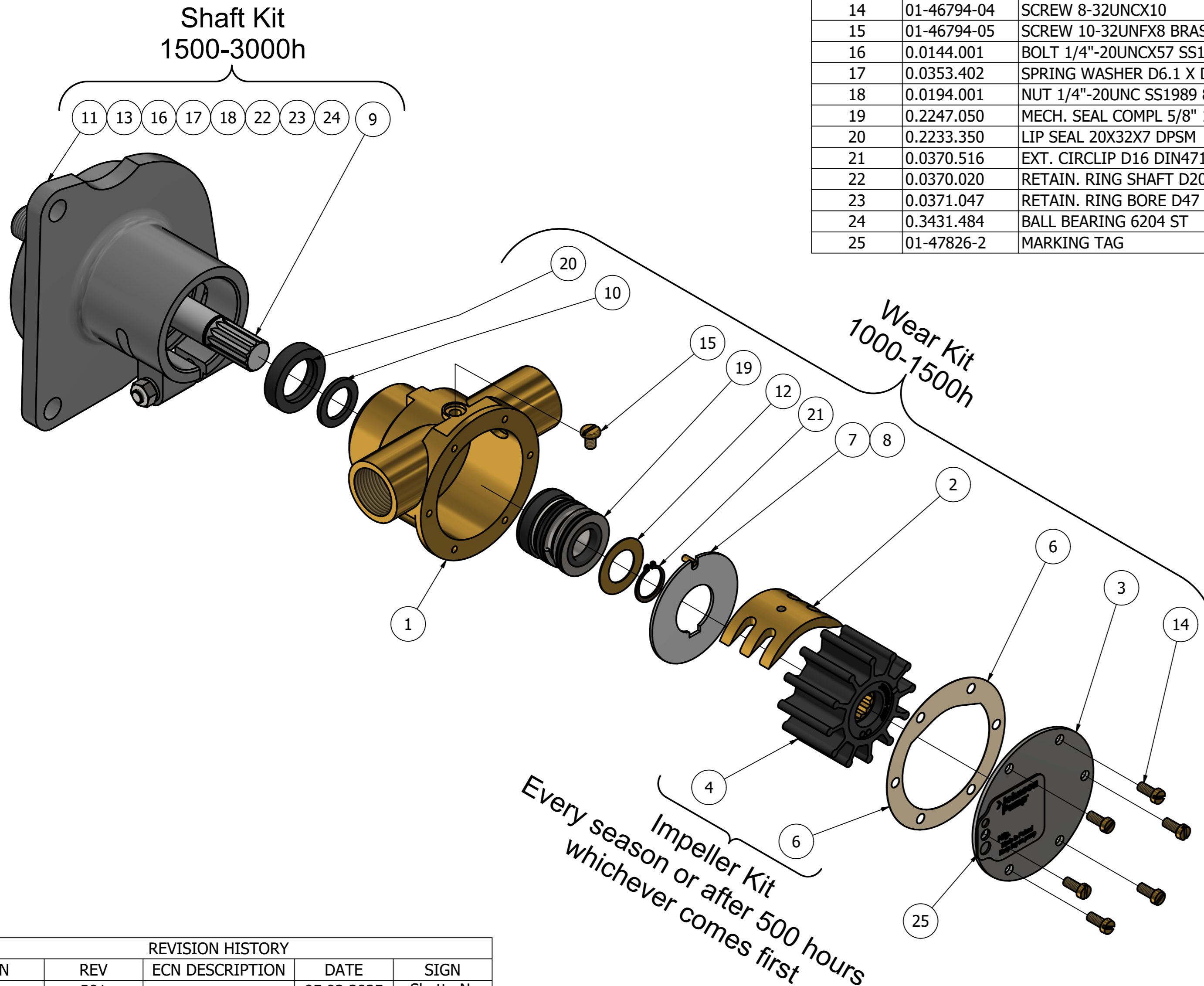


CUSTOMER DETAILS	
OEM PUMP PART NO	1638 AND SEVERAL UNKNOWN
MANUFACTURER	BURIOLI, CT MARINE, DIESEL AUTO MARIN, FORD, GUSTAVSSON MOTOR, N, HIGH POWER MARINE, INDU MARIN, NEDALO, PKF MARINE, SABB, TELVA OY, THORNYCROFT
ENGINE	2401E, Dover 2722, CT 120D, CT 80D, Damas, 2704ET, 2701E, 2714E, 2704E, 2711E, 2713E, 2704ETA, 2722-25, 2710-15, 2712E, 2722-25, 2710-15, 2712, 2726T, 2725, 2722, 4.415, 6.38, 6.622, 4.254, 2722 E, 240, 251, 331
PUMP DESCRIPTION	F5B-9 IMPELLER PUMP OEM

PART LIST									
DRAWING POSITION	COMPONENTS	COMPONENT DESCRIPTION	QTY	IMPELLER KIT	WEAR KIT	SHAFT KIT	SCREW KIT		
1	01-36523-2	PUMP BODY F5B-1/-3/-9	1						
2	01-42397	CAM 1/1 F5B-	1		X				
3	01-47763-1	END COVER F4B-F5B SS	1		X				
4	08-1027B	IMPELLER F5 NEOPRENE	1	09-1027B-1					
6	01-42401	GASKET F5B-	1	09-1027B-1	X				
7	01-42399-2	WEAR PLATE F5B-	1		X				
8	01-42400	PIN F35B-/F7B/F70B	1		X				
9	01-45324	SHAFT F5/F7B-9	1			X			
10	01-42402	SLINGER F5/F7B-	1		X				
11	01-24141	BEARING HOUSING F5/F7B-9	1			X			
12	01-45680	WASHER F5B/F6B/F7B	1		X				
13	01-45323	SPACER F5/F7B-9	1			X			
14	01-46794-04	SCREW 8-32UNCX10	6		X			09-47553-102	
15	01-46794-05	SCREW 10-32UNFX8 BRASS	1		X				
16	0.0144.001	BOLT 1/4"-20UNCX57 SS1943 STZN	1			X			
17	0.0353.402	SPRING WASHER D6.1 X D11.8 X1.6	1			X			
18	0.0194.001	NUT 1/4"-20UNC SS1989 8.8ZN	1			X			
19	0.2247.050	MECH. SEAL COMPL 5/8" 106BT2C1	1		X				
20	0.2233.350	LIP SEAL 20X32X7 DPSM	1		X				
21	0.0370.516	EXT. CIRCLIP D16 DIN471 PHB	1		X				
22	0.0370.020	RETAIN. RING SHAFT D20 DIN471 SPRST	1			X			
23	0.0371.047	RETAIN. RING BORE D47 DIN472 SPRST	1			X			
24	0.3431.484	BALL BEARING 6204 ST	2			X			
25	01-47826-2	MARKING TAG	1						



ISO VIEW

REVISION HISTORY				
ECN	REV	ECN DESCRIPTION	DATE	SIGN
	P01		05.02.2025	Shetty N.

UNLESS OTHERWISE STATED THE FOLLOWING APPLIES:		NAME	DATE	The component or product design and specified according to this drawing must comply with applicable EHS laws and EU-directives	
Ra in µm	FACES WITHOUT TOLERANCES ACC. TO ISO 2768 - mK	Shetty N.	2025-02-05	MASTER	STATUS WorkInProgress
APPROVED	ISO 2768 - mK	Shetty N.		TYPE	F5B-9
MATERIAL			WEIGHT	2,9 kg	SCALE
					1:1.5
DIN ISO 13715		PROJECT NUMBER 2652		DESCRIPTION	
Outside edge	Inside edge			EXPLODED VIEW OF F5B-9 IMPELLER PUMP OEM	
±0.25	±0.5			DRAWING NUMBER	
				10-24140-1	
				REVISION	
				P01	

This Drawing/Document and information shown contains proprietary information of SPX FLOW and must not without permission and written consent be reproduced, copied, transmitted, transferred, disclosed, undue use, shown or handed out to any unauthorized person and is to be maintained in confidence.