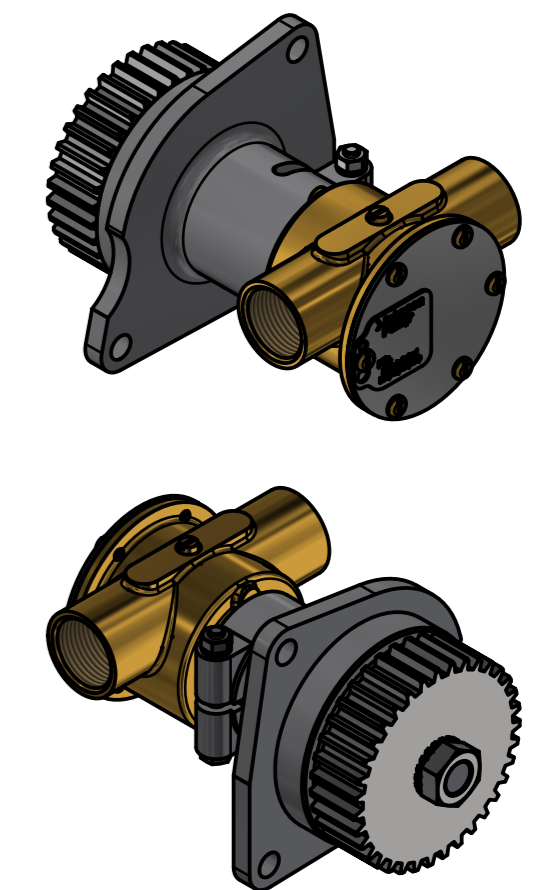
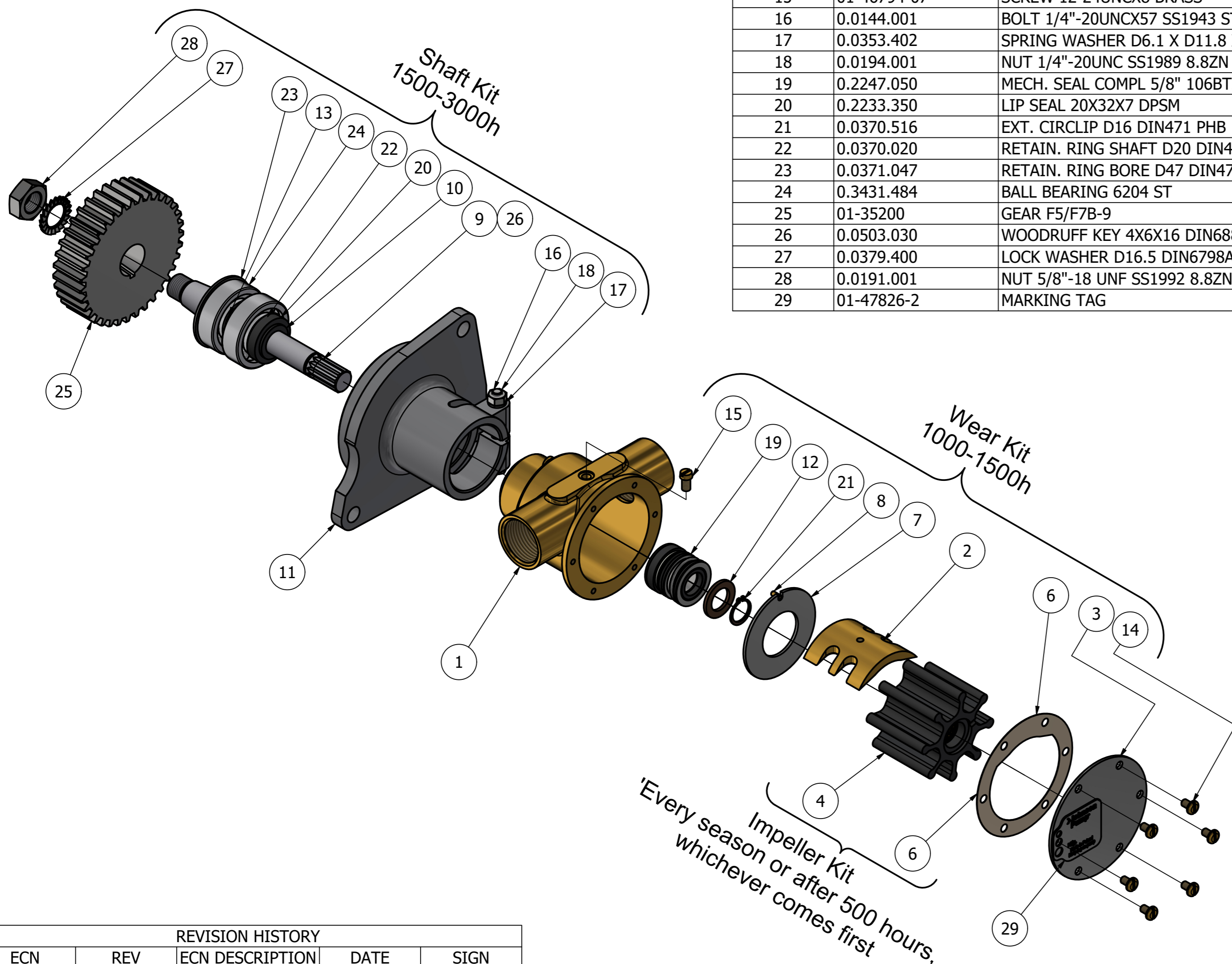


CUSTOMER DETAILS

OEM PUMP PART NO	Miscellaneous
MANUFACTURER	Beta Marine, C-Power, High Power Marine, Lister Petter, Mermaid Marine, Watermota
ENGINE	Dover 2726 T, Dover 2726 TIM, Dover 2722, Dover 2725, 2725-series 6 cyl, 2722-series 4 cyl, 2725E, 2722E, 2725 CS6, 2722 CS4, 2722 4 cyl, 2723 4 cyl, 2724 4 cyl, 2725 4 cyl, 2726 6 cyl, 2727 6 cyl, 2728 6 cyl, Majestic, Melody, Monarch, Turbo Plus, Mistral, Sea Lion 140, Super Lion 170, Super Lion 240
PUMP DESCRIPTION	F7B-903 IMPELLER PUMP OEM

PART LIST

DRAWING POSITION	COMPONENTS	COMPONENT DESCRIPTION	QTY	IMPELLER KIT	WEAR KIT	SHAFT KIT	SCREW KIT
1	01-21862-2	PUMP BODY F7B-1/-3/-9	1				
2	01-42442	CAM 2/3 F7B/F70B	1		X		
3	01-47769-1	END COVER F7B-	1		X		
4	08-1028BT-1	IMPELLER F7 MC 97 THREAD	1	09-1028BT-1			
6	01-42445	GASKET F4B/F7B-	1	09-1028BT-1	X		
7	01-47725	WEAR PLATE F7B/F70B	1		X		
8	01-42400	PIN F35B-/F7B/F70B	1		X		
9	01-45324	SHAFT F5/F7B-9	1			X	
10	01-42402	SLINGER F5/F7B-	1		X		
11	01-24141	BEARING HOUSING F5/F7B-9	1				
12	01-45174	WASHER F7B-3000/-5000	1		X		
13	01-45323	SPACER F5/F7B-9	1			X	
14	01-46794-05	SCREW 10-32UNCX8 BRASS	6		X		X
15	01-46794-07	SCREW 12-24UNCX8 BRASS	1		X		
16	0.0144.001	BOLT 1/4"-20UNCX57 SS1943 STZN	1			X	
17	0.0353.402	SPRING WASHER D6.1 X D11.8 X1.6	1			X	
18	0.0194.001	NUT 1/4"-20UNC SS1989 8.8ZN	1			X	
19	0.2247.050	MECH. SEAL COMPL 5/8" 106BT2C1	1		X		
20	0.2233.350	LIP SEAL 20X32X7 DPSM	1		X		
21	0.0370.516	EXT. CIRCLIP D16 DIN471 PHB	1		X		
22	0.0370.020	RETAIN. RING SHAFT D20 DIN471 SPRST	1			X	
23	0.0371.047	RETAIN. RING BORE D47 DIN472 SPRST	1			X	
24	0.3431.484	BALL BEARING 6204 ST	2			X	
25	01-35200	GEAR F5/F7B-9	1				
26	0.0503.030	WOODRUFF KEY 4X6X16 DIN6888 ST	1			X	
27	0.0379.400	LOCK WASHER D16.5 DIN6798A SPRST	1			X	
28	0.0191.001	NUT 5/8"-18 UNF SS1992 8.8ZN	1			X	
29	01-47826-2	MARKING TAG	1				



ISO VIEW

REVISION HISTORY				
ECN	REV	ECN DESCRIPTION	DATE	SIGN
	P01		08-Nov-2024	M.G

UNLESS OTHERWISE STATED THE FOLLOWING APPLIES:		NAME	DATE	The component or product design and specified according to this drawing must comply with applicable EHS laws and EU-directives	
Ra in µm ISO 1302	FACES WITHOUT TOLERANCES ACC. TO ISO 2768 - mK	DRAWN M.G	2024-11-08	MASTER	STATUS WorkInProgress
		APPROVED M.G			PROJECTION METHOD ISO 128
		MATERIAL	WEIGHT 4,4 kg	TYPE F7B-903	SCALE 1:3
DIN ISO 13715 Outside edge Ra 0.25 Inside edge Ra 0.5		PROJECT NUMBER 2652	DESCRIPTION EXPLODED VIEW OF F7B-903 IMPELLER PUMP		
SPXFLOW Johnson Pump		DRAWING NUMBER 10-24139-4		REVISION P01	

This Drawing/Document and information shown contains proprietary information of SPX FLOW and must not without permission and written consent be reproduced, copied, transmitted, transferred, disclosed, undue use, shown or handed out to any unauthorized person and is to be maintained in confidence.