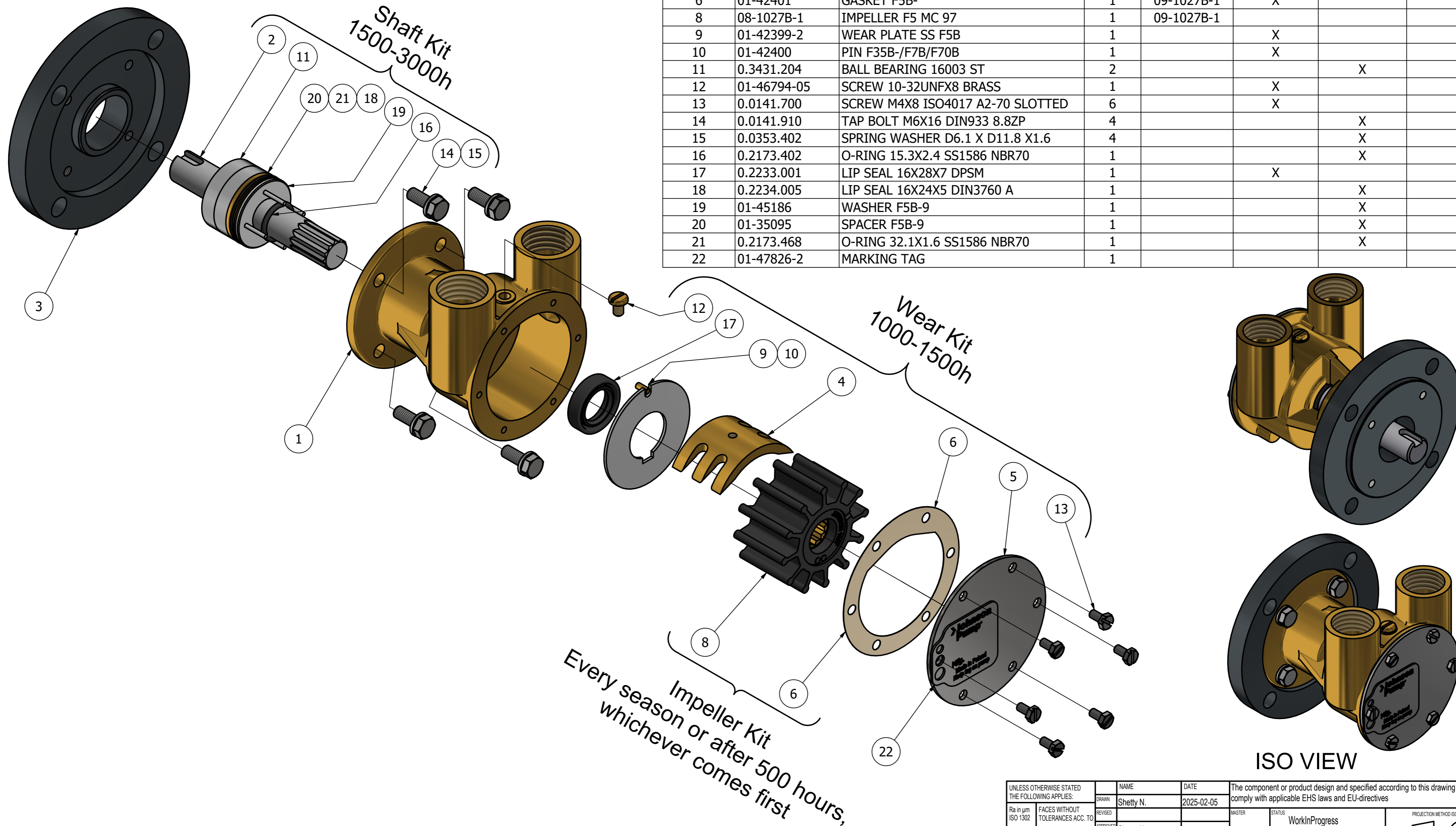


CUSTOMER DETAILS

OEM PUMP PART NO	
MANUFACTURER	Sperre Mek (10-24035-01, but with flange)
ENGINE	UNKNOWN
PUMP DESCRIPTION	F5B-9 IMPELLER PUMP OEM

PART LIST

DRAWING POSITION	COMPONENTS	COMPONENT DESCRIPTION	QTY	IMPELLER KIT	WEAR KIT	SHAFT KIT	SCREW KIT
1	01-24115-1	PUMP BODY F5B-9	1				
2	01-45131	SHAFT F5B-9	1			X	
3	01-35074	FLANGE F5B-9	1				
4	01-42397	CAM 1/1 F5B-	1		X		
5	01-47763-1	END COVER F4B-F5B SS	1		X		
6	01-42401	GASKET F5B-	1	09-1027B-1	X		
8	08-1027B-1	IMPELLER F5 MC 97	1	09-1027B-1			
9	01-42399-2	WEAR PLATE SS F5B	1		X		
10	01-42400	PIN F35B-/F7B/F70B	1		X		
11	0.3431.204	BALL BEARING 16003 ST	2			X	
12	01-46794-05	SCREW 10-32UNFX8 BRASS	1		X		
13	0.0141.700	SCREW M4X8 ISO4017 A2-70 SLOTTED	6		X		
14	0.0141.910	TAP BOLT M6X16 DIN933 8.8ZP	4			X	
15	0.0353.402	SPRING WASHER D6.1 X D11.8 X1.6	4			X	
16	0.2173.402	O-RING 15.3X2.4 SS1586 NBR70	1			X	
17	0.2233.001	LIP SEAL 16X28X7 DPSM	1		X		
18	0.2234.005	LIP SEAL 16X24X5 DIN3760 A	1			X	
19	01-45186	WASHER F5B-9	1			X	
20	01-35095	SPACER F5B-9	1			X	
21	0.2173.468	O-RING 32.1X1.6 SS1586 NBR70	1			X	
22	01-47826-2	MARKING TAG	1				



ISO VIEW

Every season or after 500 hours,
whichever comes first

REVISION HISTORY

ECN	REV	ECN DESCRIPTION	DATE	SIGN
	P01		05.02.2025	Shetty N.

UNLESS OTHERWISE STATED THE FOLLOWING APPLIES:		NAME	DATE	The component or product design and specified according to this drawing must comply with applicable EHS laws and EU-directives	
Ra in µm	FACES WITHOUT TOLERANCES ACC. TO ISO 1302	Shetty N.	2025-02-05	MASTER	STATUS WorkInProgress
	ISO 2768 - mK	APPROVED Shetty N.			PROJECTION METHOD ISO 128
		MATERIAL	WEIGHT 1,8 kg	TYPE F5B-9	SCALE 1:1.25
DIN ISO 13715		PROJECT NUMBER 2652	DESCRIPTION EXPLODED VIEW OF F5B-9 IMPELLER PUMP OEM		
Outside edge	Inside edge			DRAWING NUMBER 10-24100-1	
±0.25	±0.5			REVISION P01	

This Drawing/Document and information shown contains proprietary information of SPX FLOW and must not without permission and written consent be reproduced, copied, transmitted, transferred, disclosed, undue use, shown or handed out to any unauthorized person and is to be maintained in confidence.