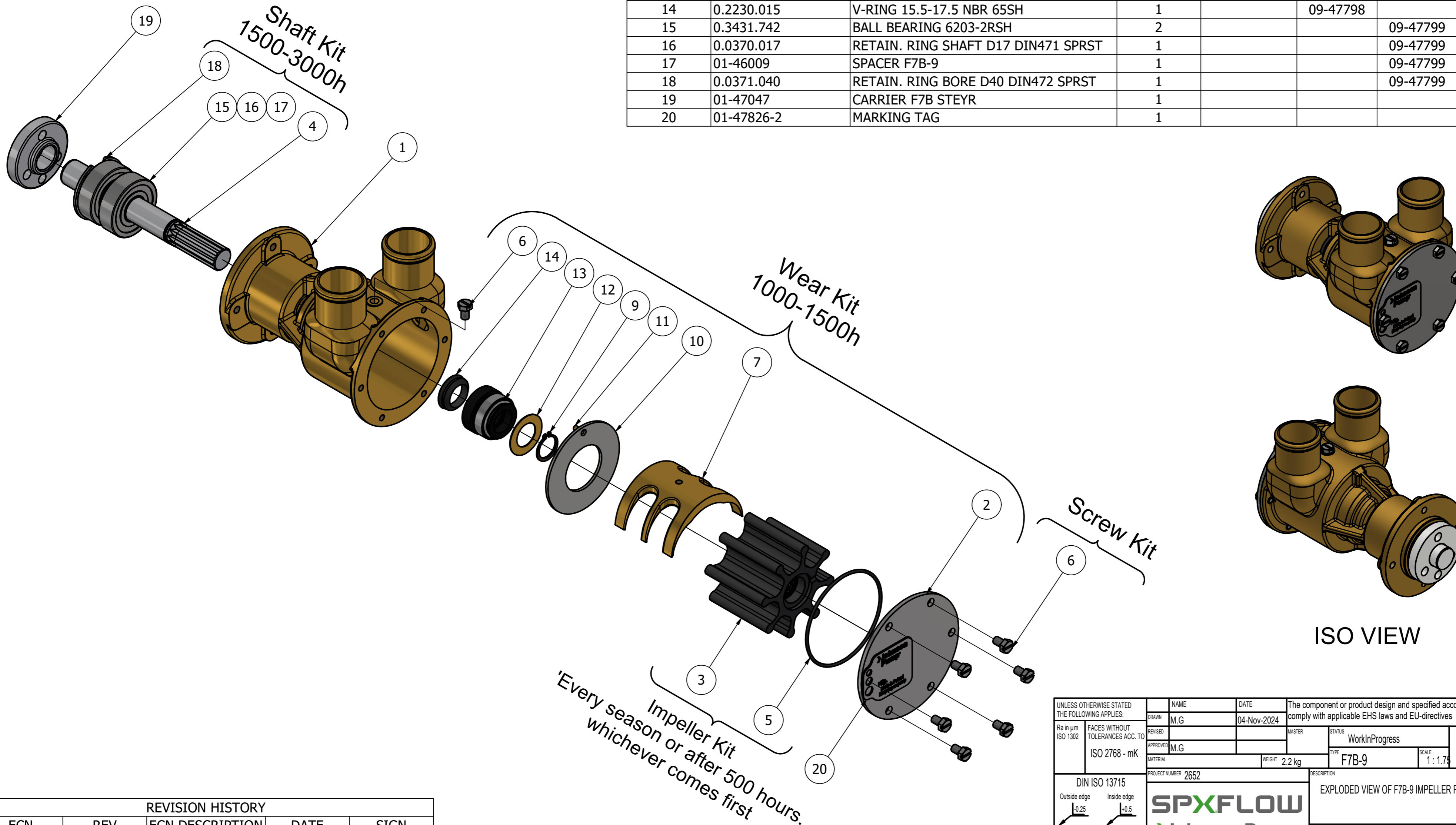


CUSTOMER DETAILS	
OEM PUMP PART NO	2203714-2
MANUFACTURER	STEYR MOTORS
ENGINE	164, 168 Marine M28 Turbo Diesel + Solas, 256, MO144M38, MO164M40, 4 & 6 Cylinders
PUMP DESCRIPTION	F7B-9 IMPELLER PUMP

		PART LIST					
DRAWING POSITION	COMPONENTS	COMPONENT DESCRIPTION	QTY	IMPELLER KIT	WEAR KIT	SHAFT KIT	SCREW KIT
1	01-13580-2	PUMP BODY F7B-9 WITH MECH. SEAL	1				
2	01-47769-2	END COVER F7B	1		09-47798		
3	08-1028BT-1	IMPELLER F7 MC 97 THREAD	1	09-1028BT-1			
4	01-35965-2	SHAFT F7B-9	1			09-47799	
5	0.2172.012	O-RING 63.22X1.78 NBR70	1	09-1028BT-1	09-47798		
6	0.0141.505	SCREW M5X8 ISO4017 (A2) SLOTTED	7		09-47798		09-47553-105
7	01-46899	CAM 1/1 F7B	1		09-47798		
9	0.0370.516	EXT. CIRCLIP D16 DIN471 PHB	1		09-47798		
10	01-46798-2	WEAR PLATE F7B	1		09-47798		
11	01-42400	PIN F35B-/F7B/F70B	1		09-47798		
12	01-45680	WASHER F5B/F6B/F7B	1		09-47798		
13	0.2247.022	MECH. SEAL COMPL D16	1		09-47798		
14	0.2230.015	V-RING 15.5-17.5 NBR 65SH	1		09-47798		
15	0.3431.742	BALL BEARING 6203-2RSH	2			09-47799	
16	0.0370.017	RETAIN. RING SHAFT D17 DIN471 SPRST	1			09-47799	
17	01-46009	SPACER F7B-9	1			09-47799	
18	0.0371.040	RETAIN. RING BORE D40 DIN472 SPRST	1			09-47799	
19	01-47047	CARRIER F7B STEYR	1				
20	01-47826-2	MARKING TAG	1				



This Drawing/Document and information shown contains proprietary information of SPX FLOW and must not be reproduced, copied, transmitted, transferred, disclosed, undue use, shown or handed out to any unauthorized person and is to be maintained in confidence.

REVISION HISTORY				
ECN	REV	ECN DESCRIPTION	DATE	SIGN
	P01		04-Nov-2024	M.G

UNLESS OTHERWISE STATED THE FOLLOWING APPLIES:		NAME	DATE	The component or product design and specified according to this drawing must comply with applicable EHS laws and EU-directives	
Ra in µm ISO 1302	FACES WITHOUT TOLERANCES ACC. TO ISO 2768 - mK	DRAWN M.G	04-Nov-2024	MASTER	STATUS WorkInProgress
		APPROVED M.G			PROJECTION METHOD ISO 128
		MATERIAL	WEIGHT 2.2 kg	TYPE F7B-9	SCALE 1:1.75
DIN ISO 13715 Outside edge Ra 0.25 Inside edge Ra 0.5		PROJECT NUMBER 2652	DESCRIPTION EXPLODED VIEW OF F7B-9 IMPELLER PUMP		
				DRAWING NUMBER 10-13598-11	REVISION P01