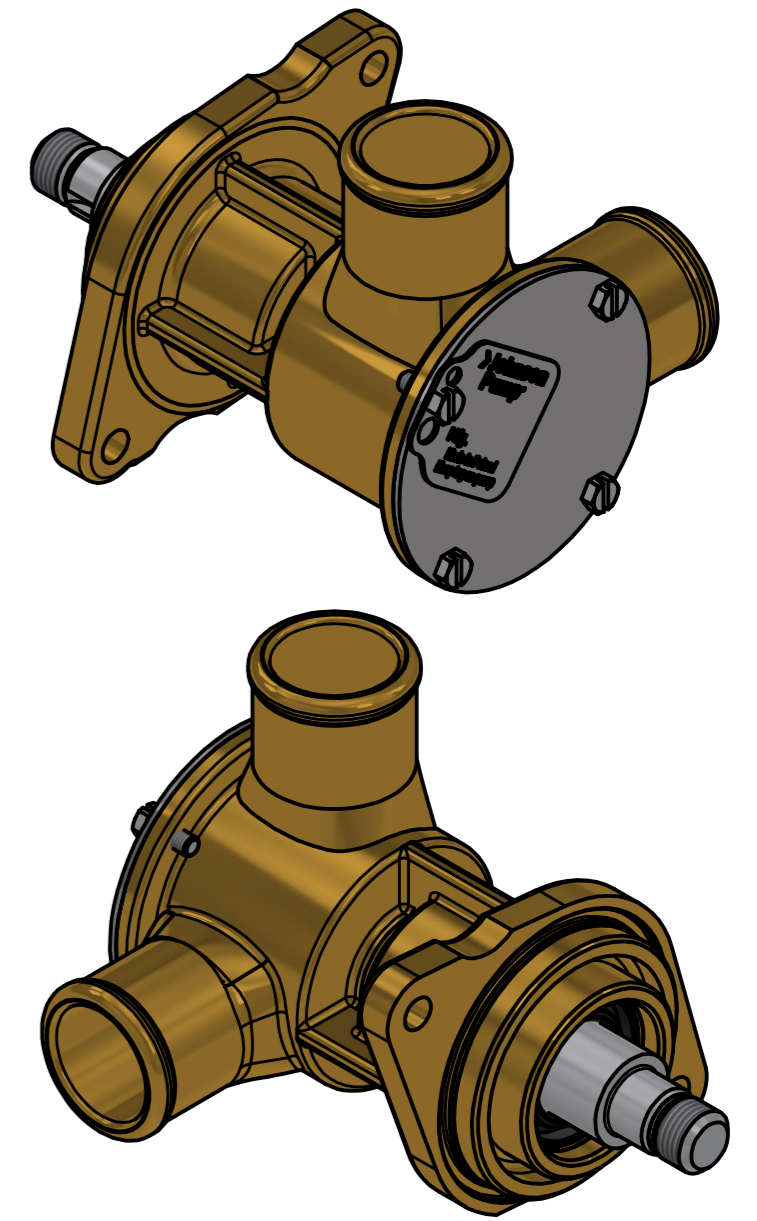
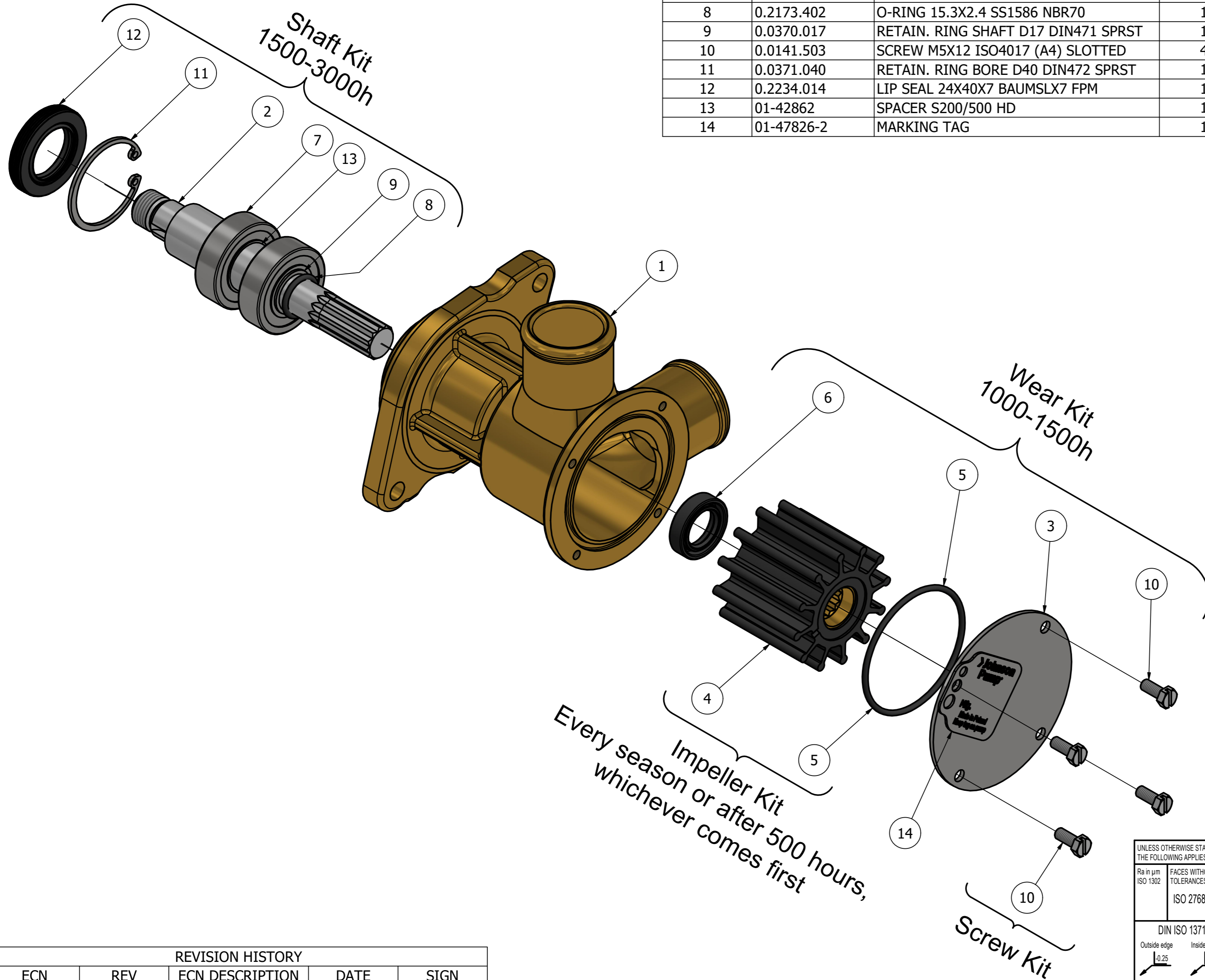


CUSTOMER DETAILS

OEM PUMP PART NO	48100876
MANUFACTURER	NANNI DIESEL
ENGINE	T4
PUMP DESCRIPTION	F6B-9 IMPELLER PUMP

PART LIST

DRAWING POSITION	COMPONENTS	COMPONENT DESCRIPTION	QTY	IMPELLER KIT	WEAR KIT	SHAFT KIT	SCREW KIT
1	01-13194-3	PUMP BODY F6B-9	1				
2	01-47104	SHAFT F6B-9	1			09-47845	
3	01-47768-1	END COVER F6B SS	1		09-47844		
4	08-812BT-1	IMPELLER F6 MC 97	1	09-812BT-1			
5	0.2173.475	O-RING 57.6X2.4 SS1586 NBR70	1	09-812BT-1	09-47844		
6	0.2233.408	LIP SEAL 16X28X7 DPSM (SS + SS)	1		09-47844		
7	0.3431.742	BALL BEARING 6203-2RSH	2			09-47845	
8	0.2173.402	O-RING 15.3X2.4 SS1586 NBR70	1			09-47845	
9	0.0370.017	RETAIN. RING SHAFT D17 DIN471 SPRST	1			09-47845	
10	0.0141.503	SCREW M5X12 ISO4017 (A4) SLOTTED	4		09-47844		09-47553-109
11	0.0371.040	RETAIN. RING BORE D40 DIN472 SPRST	1			09-47845	
12	0.2234.014	LIP SEAL 24X40X7 BAUMSLX7 FPM	1			09-47845	
13	01-42862	SPACER S200/500 HD	1			09-47845	
14	01-47826-2	MARKING TAG	1				



ISO VIEW

REVISION HISTORY				
ECN	REV	ECN DESCRIPTION	DATE	SIGN
	P01			Shetty N.

UNLESS OTHERWISE STATED THE FOLLOWING APPLIES:		NAME	DATE	The component or product design and specified according to this drawing must comply with applicable EHS laws and EU-directives	
Ra in µm ISO 1302	FACES WITHOUT TOLERANCES ACC. TO ISO 2768 - mK	Shetty N.	04-Nov-2024	MASTER	STATUS WorkInProgress
DIN ISO 13715 Outside edge Ra 0.25 Inside edge Ra 0.5		APPROVED	Shetty N.	PROJECT NUMBER 2652	SCALE 1:1.25
SPXFLOW Johnson Pump		DESCRIPTION		EXPLODED VIEW OF F6B-9 IMPELLER PUMP	
		DRAWING NUMBER		10-13345-11	
		REVISION		P01	

This Drawing/Document and information shown contains proprietary information of SPX FLOW and must not be reproduced, copied, transmitted, transferred, disclosed, undue use, shown or handed out to any unauthorized person and is to be maintained in confidence.