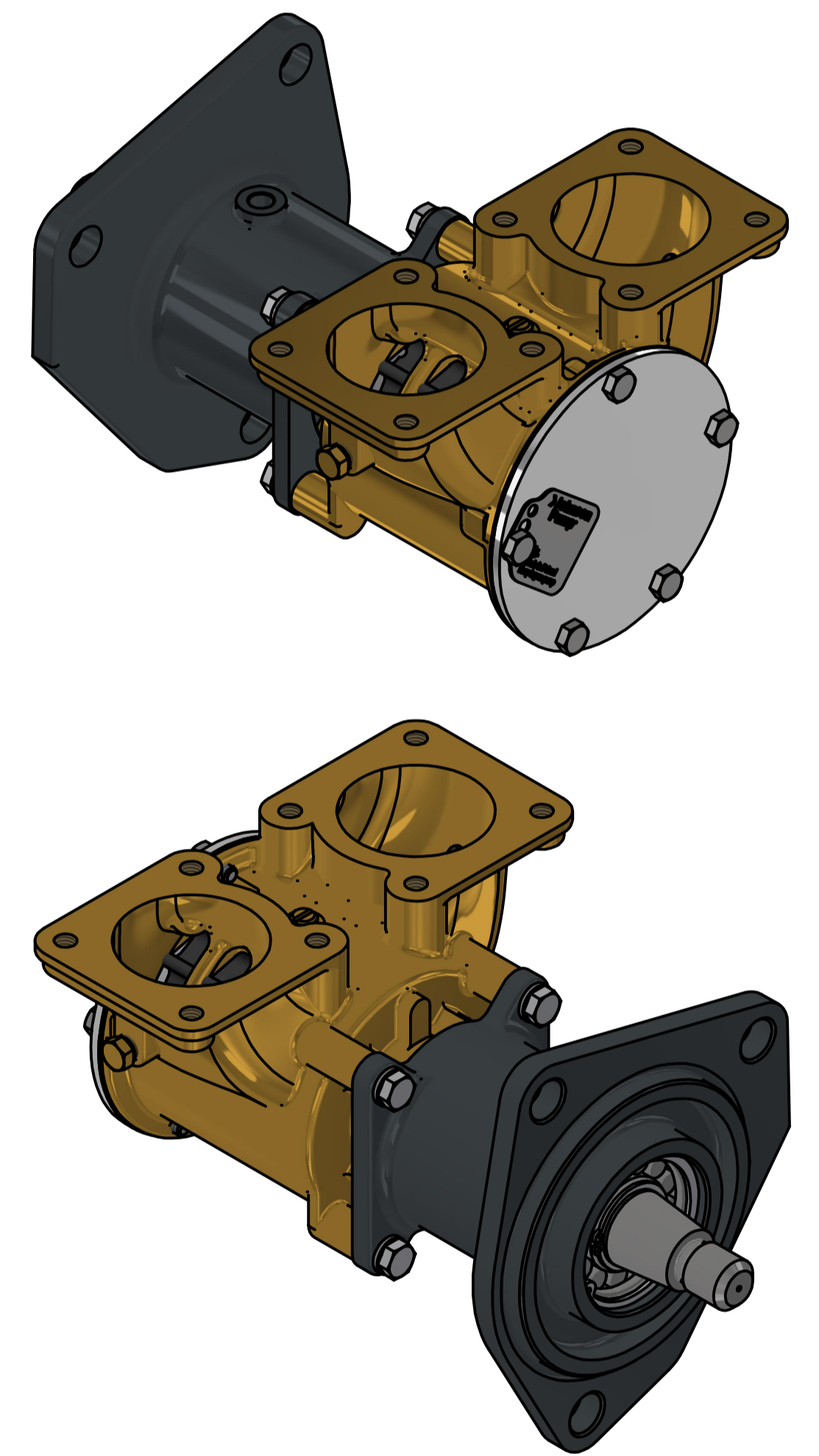
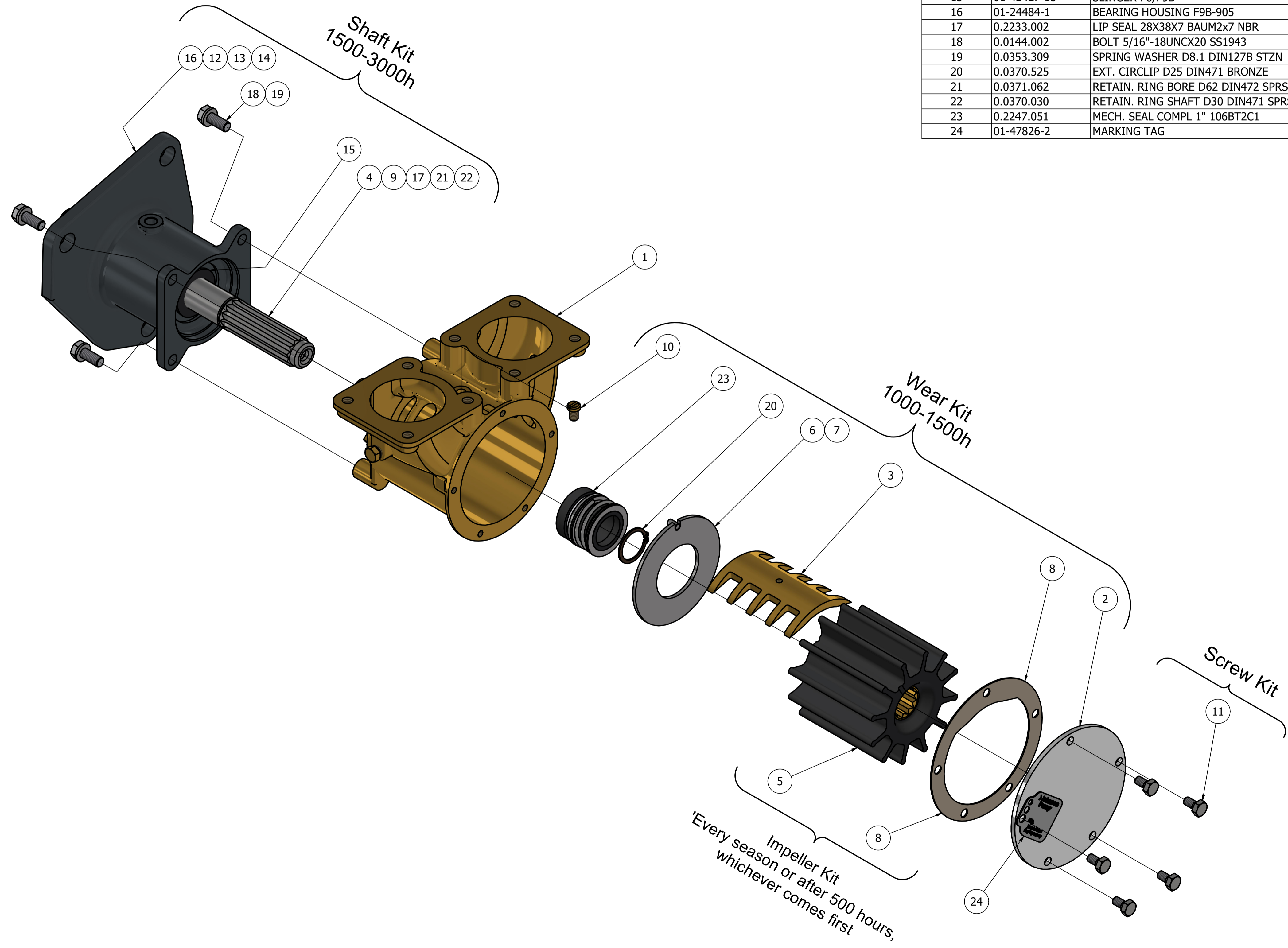


CUSTOMER DETAILS	
OEM PUMP PART NO	3837935
MANUFACTURER	VOLVO PENTA
ENGINE	TAMD165A, TAMD165C, TAMD165P, TAMD165A-A, TAMD165C-A, TAMD165P-A, TAMD162A, TAMD162B, TAMD162C, TAMD162C-B, TAMD162C-C, TAMD163A-A, TAMD163P-A, TAMD165A-A, TAMD165C-A
PUMP DESCRIPTION	F9B-905 IMPELLER PUMP

DRAWING POSITION	COMPONENTS	COMPONENT DESCRIPTION	QTY	PART LIST			
				IMPELLER KIT	WEAR KIT	SHAFT KIT	SCREW KIT
1	01-13003	PUMP BODY F9B	1				
2	01-47771-1	END COVER F8B/F9B	1		09-47551-123		
3	01-45018	CAM F9B-905	1		09-47551-123		
4	01-35742	SHAFT F9B-905	1			09-47552-132	
5	08-814B	IMPELLER F9 NEOPRENE	1	09-814B			
6	01-46538	WEAR PLATE F8/F9/F95 SS	1		09-47551-123		
7	01-42426-2	PIN	1		09-47551-123		
8	01-42424-3	GASKET F8B/F9B-	1	09-814B	09-47551-123		
9	01-46493	SUPPORT RING F9B-905	1			09-47552-132	
10	01-46794-02	SCREW 1/4"-20UNCX10 AL.BRONZE	1		09-47551-123		
11	0.0144.003	BOLT 1/4"-20UNCX1/2" SS1943	5				09-47553-108
12	0.3431.486	BALL BEARING 6206 ST	1				09-47552-132
13	0.3428.513	CYL ROLLER BEARING NJ 206 ECP	1				09-47552-132
14	0.3428.514	CYL ROLLER BEARING NU 206 ECP	1				09-47552-132
15	01-42427-15	SLINGER F8/F9B-	1				09-47552-132
16	01-24484-1	BEARING HOUSING F9B-905	1				09-47552-132
17	0.2233.002	LIP SEAL 28X38X7 BAUM2x7 NBR	1				09-47552-132
18	0.0144.002	BOLT 5/16"-18UNCX20 SS1943	4				09-47552-132
19	0.0353.309	SPRING WASHER D8.1 DIN127B STZN	4				09-47552-132
20	0.0370.525	EXT. CIRCLIP D25 DIN471 BRONZE	1		09-47551-123		
21	0.0371.062	RETAIN. RING BORE D62 DIN472 SPRST	2			09-47552-132	
22	0.0370.030	RETAIN. RING SHAFT D30 DIN471 SPRST	1			09-47552-132	
23	0.2247.051	MECH. SEAL COMPL 1" 106BT2C1	1		09-47551-123		
24	01-47826-2	MARKING TAG	1				



ISO VIEW

REVISION HISTORY				
ECN	REV	ECN DESCRIPTION	DATE	SIGN
	P01			

UNLESS OTHERWISE STATED THE FOLLOWING APPLIES:		DATE	The component or product design and specified according to this drawing must comply with applicable EHS laws and EU-directives	
ISO 1302	ISO 2768 - mK	22-Oct-2024	STATUS	WorkInProgress
DIN ISO 13715		PROJECT NUMBER	2652	DESCRIPTION
EXPLODED VIEW OF F9B-905 IMPELLER PUMP		DRAWING NUMBER		
10-13166-11		P01		

This Drawing/Document and information shown contains proprietary information of SPX FLOW and must not without permission and written consent be reproduced, copied, transmitted, transferred, disclosed, unclassified use, shown or handed out to any unauthorized person and is to be maintained in confidence.