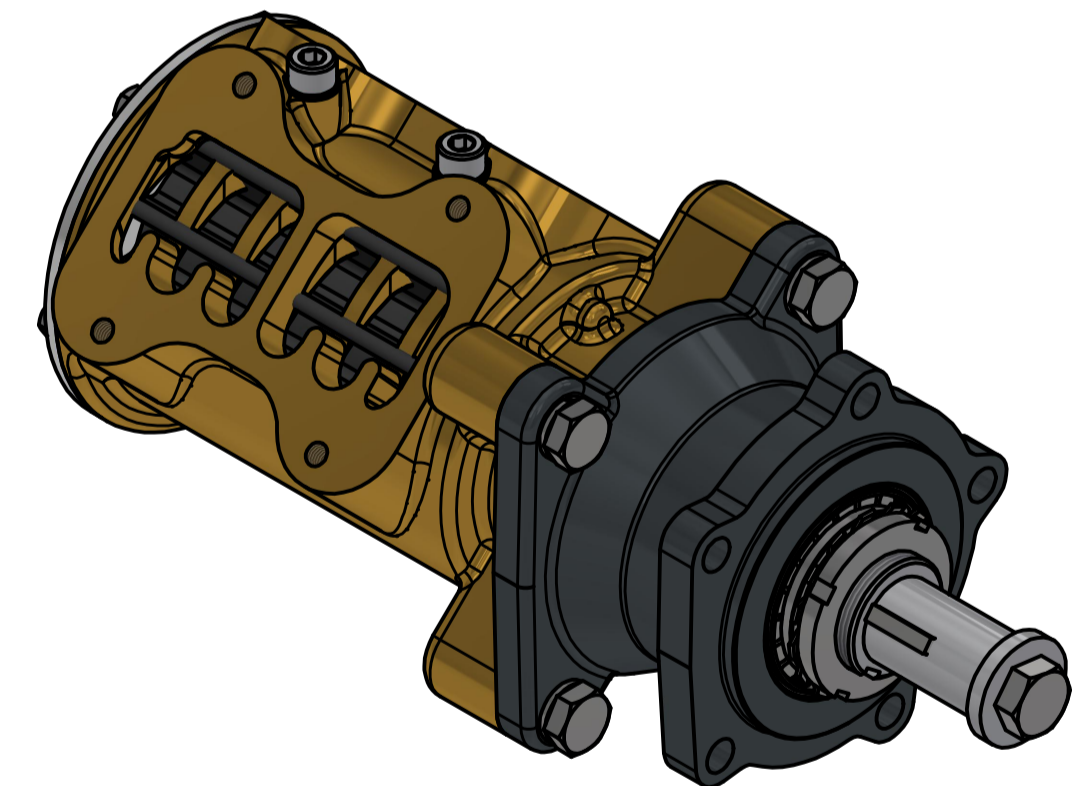
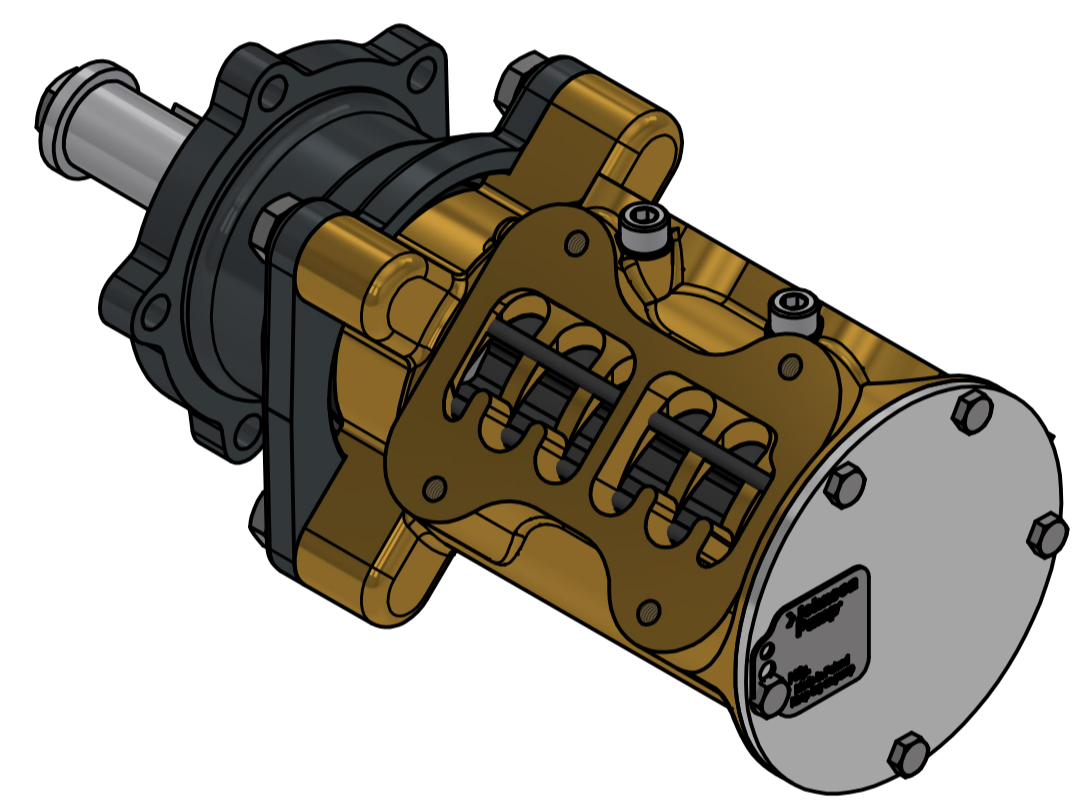
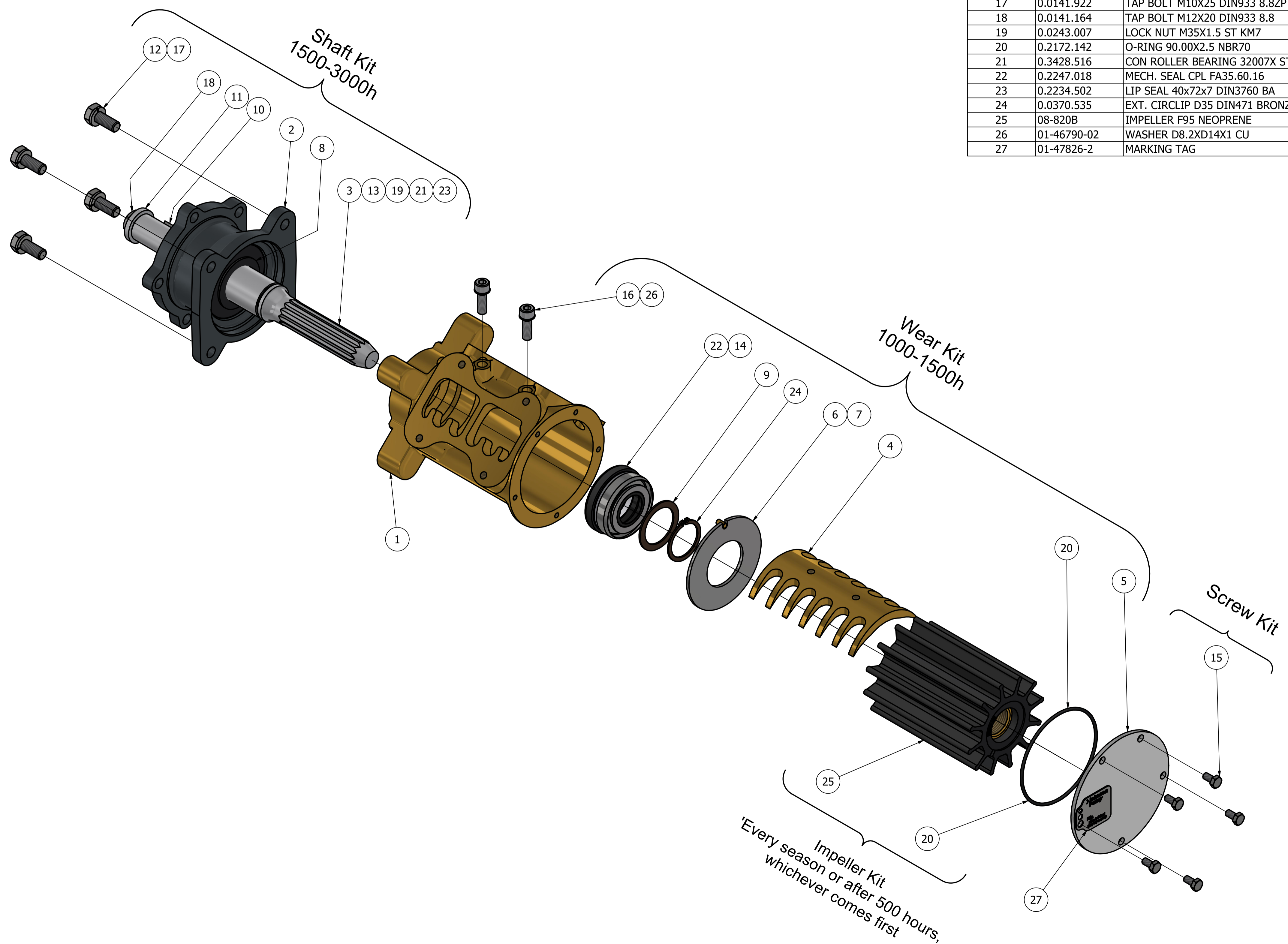


CUSTOMER DETAILS	
OEM PUMP PART NO	
MANUFACTURER	MAN TRUCK & BUS
ENGINE	D2840
	LE301/302/402/403/404/407/409/423
PUMP DESCRIPTION	F95B-9 IMPELLER PUMP

DRAWING POSITION	COMPONENTS	COMPONENT DESCRIPTION	QTY	PART LIST			
				IMPELLER KIT	WEAR KIT	SHAFT KIT	SCREW KIT
1	01-13119-2	PUMP BODY F95B-9	1				
2	01-24490-1	BEARING HOUSING F95B-9	1			09-47837	
3	01-35743	SHAFT F95B-9	1			09-47837	
4	01-35744	CAM 1/1 F95B	1		X		
5	01-47771-2	END COVER F8/F9/F95 SS	1		X		
6	01-46538	WEAR PLATE F8/F9/F95 SS	1		X		
7	01-42426	PIN	1		X		
8	01-46524	SLINGER F95B-9	1			09-47837	
9	01-46323	WASHER F95B-	1		X		
10	01-46352	WOODRUFF KEY 4.8X9.4X22.22	1			09-47837	
11	01-46615	WASHER	1			09-47837	
12	0.0353.111	SPRING WASHER D10.2 DIN127B A2	4			09-47837	
13	0.0383.007	LOCKING WASHER 35 ST MB7	1			09-47837	
14	0.0300.744	SET SCREW M6X10 DIN 916 A2	1		X		
15	0.0138.134	TAP BOLT M6X12 DIN933 A2	5				09-47553-107
16	0.0252.189	ALLEN SCREW M8X25 A4	2		X		
17	0.0141.922	TAP BOLT M10X25 DIN933 8.8ZP	4			09-47837	
18	0.0141.164	TAP BOLT M12X20 DIN933 8.8	1			09-47837	
19	0.0243.007	LOCK NUT M35X1.5 ST KM7	1			09-47837	
20	0.2172.142	O-RING 90.00X2.5 NBR70	1	09-820B	X		
21	0.3428.516	CON ROLLER BEARING 32007X ST	2			09-47837	
22	0.2247.018	MECH. SEAL CPL FA35.60.16	1		X		
23	0.2234.502	LIP SEAL 40x72x7 DIN3760 BA	1			09-47837	
24	0.0370.535	EXT. CIRCLIP D35 DIN471 BRONZE	1		X		
25	08-820B	IMPELLER F95 NEOPRENE	1	09-820B			
26	01-46790-02	WASHER D8.2XD14X1 CU	2		X		
27	01-47826-2	MARKING TAG	1				



ISO VIEW

This Drawing/Document and information shown contains proprietary information of SPX FLOW and must not without permission and written consent be reproduced, copied, transmitted, transferred, disclosed, undue use, shown or handed out to any unauthorized person and is to be maintained in confidence.

REVISION HISTORY				
ECN	REV	ECN DESCRIPTION	DATE	SIGN
	P01			M.G

UNLESS OTHERWISE STATED THE FOLLOWING APPLIES:		NAME	DATE	The component or product design and specified according to this drawing must comply with applicable EHS laws and EU-directives	
Ra in µm	FACES WITHOUT TOLERANCES ACC. TO	DESIGN	21-Oct-2024	STATUS	WorkInProgress
ISO 1302	ISO 2768 - mK	APPROVED		SCALE	1:2
DIN ISO 13715		PROJECT NUMBER		DESCRIPTION	
Outside edge	Inside edge	2652		EXPLODED VIEW OF F95B-9 IMPELLER PUMP	
		SPXFLOW Johnson Pump		DRAWING NUMBER	
				10-13165-02	
				P01	