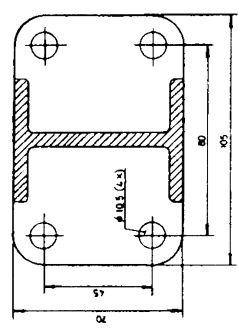
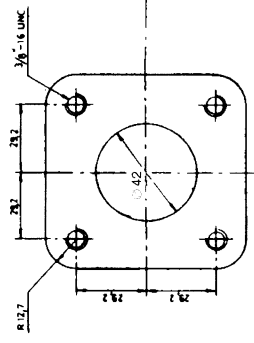
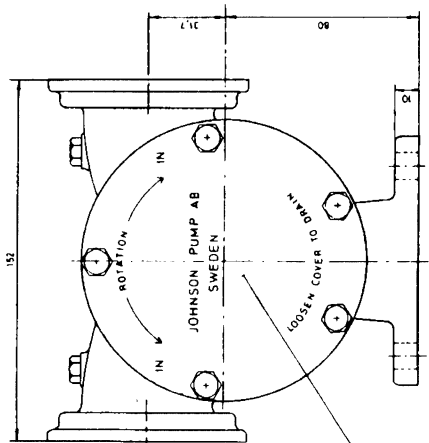
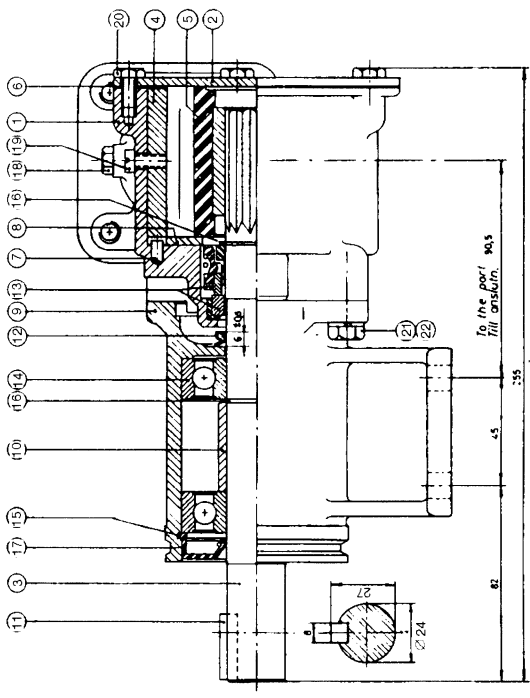


Multipurpose



PUMP NO	PUMPTYP	RUBBER QUAL.	IMPELLER	CAM	NO
PUMPBETEKNING	PUMPTYP	GUMMINVÄLITE	BENÄMNING	NO	NO
10-1302-1	F8B-3000	NITRILE	Ø 70/85	1/2	01-4280
10-1302-2	F8B-3000	NITRILE	Ø 70/85	1/2	01-4245
10-1302-3	F8B-3000	NITRILE	Ø 70/85	1/2	01-4276
10-1302-4	F8B-3000	NITRILE	Ø 70/85	1/2	01-4276

22	4	Washer	Bricka	05-02-101
21	4	Screw	Skriv	05-04-128
20	5	Screw	Skriv	05-04-46
19	1	Screw	Skriv	See table
18	2	Plug	Plugg	05-03-122
17	1	Lip seal	Läpplätning	05-29-118
16	2	Retaining ring	Låsring	05-34-108
15	1	Retaining ring	Låsring	05-34-118
14	2	Ball bearing	Kullager	05-08-504
13	1	Mech. seal	Mek. tätning	05-20-118
12	1	V-ring	V-ring	05-19-505
11	1	Key	Kil	05-03-124
10	1	Spacer	Distans	01-42747
9	1	Pedestal	Lagerrot	01-13020
8	1	Wear plate	Slitbricka	01-42423
7	1	Pin	Stift	01-42426
6	1	Gasket	Packning	01-42424
5	1	Impeller	Impeller	See table
4	1	Cam	Kam	See table
3	1	Shaft	Axel	01-35137
2	1	End cover	Lock	01-42422-1
1	1	Body	Pumphus	01-11206
Pos.	Qty.	Description	Material Dimension	Drawing nr.

Rev	Ändring	Ändrad av	Ändrad datum
1	1	10/13	7/
2	1	10/13	7/
3	1	10/13	7/
4	1	10/13	7/
5	1	10/13	7/
6	1	10/13	7/
7	1	10/13	7/
8	1	10/13	7/
9	1	10/13	7/
10	1	10/13	7/