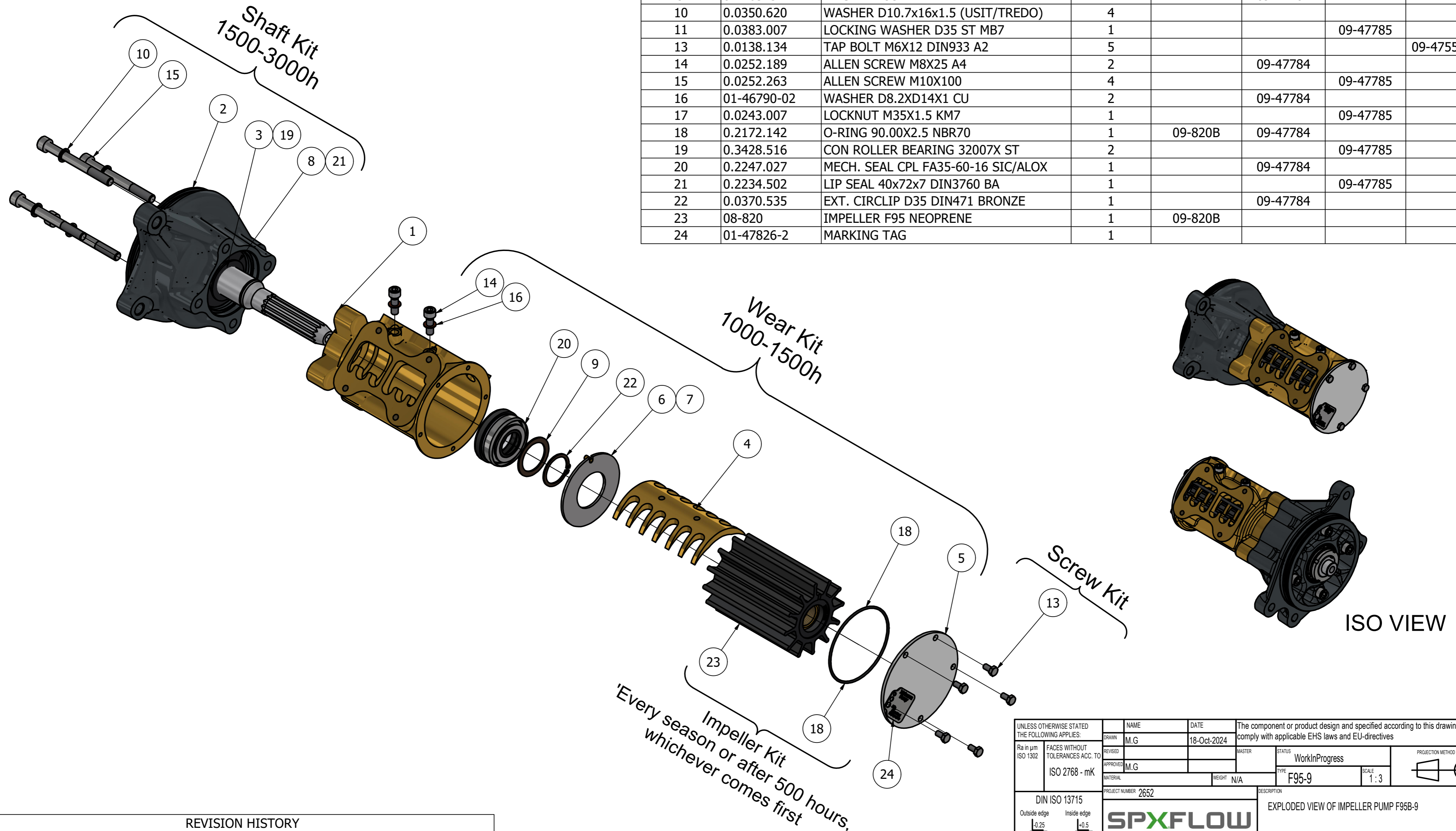


CUSTOMER DETAILS

OEM PUMP PART NO	51.06500-7139
MANUFACTURER	MAN TRUCK & BUS
ENGINE	D2868 LE421-426/431/433/436
PUMP DESCRIPTION	F95B-9 IMPELLER PUMP OEM

PART LIST

DRAWING POSITION	COMPONENTS	COMPONENT DESCRIPTION	QTY	IMPELLER KIT	WEAR KIT	SHAFT KIT	SCREW KIT
1	01-13388	PUMPHOUSE F95B-9	1				
2	01-13495	BEARING HOUSING F98B-9	1			09-47785	
3	01-36063	SHAFT F95B	1			09-47785	
4	01-35744	CAM 1/1 F95B	1		09-47784		
5	01-47771-2	END COVER F8/F9/F95 SS	1		09-47784		
6	01-46538	WEAR PLATE F8/F9/F95 SS	1		09-47784		
7	01-42426	PIN	1		09-47784		
8	01-46524	SLINGER F95B-9	1			09-47785	
9	01-46323	WASHER F95B-	1		09-47784		
10	0.0350.620	WASHER D10.7x16x1.5 (USIT/TREDO)	4				
11	0.0383.007	LOCKING WASHER D35 ST MB7	1			09-47785	
13	0.0138.134	TAP BOLT M6X12 DIN933 A2	5				09-47553-107
14	0.0252.189	ALLEN SCREW M8X25 A4	2		09-47784		
15	0.0252.263	ALLEN SCREW M10X100	4			09-47785	
16	01-46790-02	WASHER D8.2XD14X1 CU	2		09-47784		
17	0.0243.007	LOCKNUT M35X1.5 KM7	1			09-47785	
18	0.2172.142	O-RING 90.00X2.5 NBR70	1	09-820B	09-47784		
19	0.3428.516	CON ROLLER BEARING 32007X ST	2			09-47785	
20	0.2247.027	MECH. SEAL CPL FA35-60-16 SIC/ALOX	1		09-47784		
21	0.2234.502	LIP SEAL 40x72x7 DIN3760 BA	1			09-47785	
22	0.0370.535	EXT. CIRCLIP D35 DIN471 BRONZE	1		09-47784		
23	08-820	IMPELLER F95 NEOPRENE	1	09-820B			
24	01-47826-2	MARKING TAG	1				



This Drawing/Document and information shown contains proprietary information of SPX FLOW and must not without permission and written consent be reproduced, copied, transmitted, transferred, disclosed, undue use, shown or handed out to any unauthorized person and is to be maintained in confidence.

REVISION HISTORY

ECN	REV	ECN DESCRIPTION	DATE	SIGN
	P01		18-Oct-2024	M.G

UNLESS OTHERWISE STATED THE FOLLOWING APPLIES:		NAME	DATE	The component or product design and specified according to this drawing must comply with applicable EHS laws and EU-directives	
Ra in µm	FACES WITHOUT TOLERANCES ACC. TO ISO 2768 - mK	DRAWN	18-Oct-2024	MASTER	STATUS WorkInProgress
ISO 1302		APPROVED			PROJECTION METHOD ISO 128
		MATERIAL		WEIGHT N/A	TYPE F95-9
					SCALE 1:3
DIN ISO 13715		PROJECT NUMBER	2652	DESCRIPTION	
Outside edge	Inside edge			EXPLODED VIEW OF IMPELLER PUMP F95B-9	
0.25	0.5			DRAWING NUMBER	
				10-00011-12	
				REVISION	
				P01	