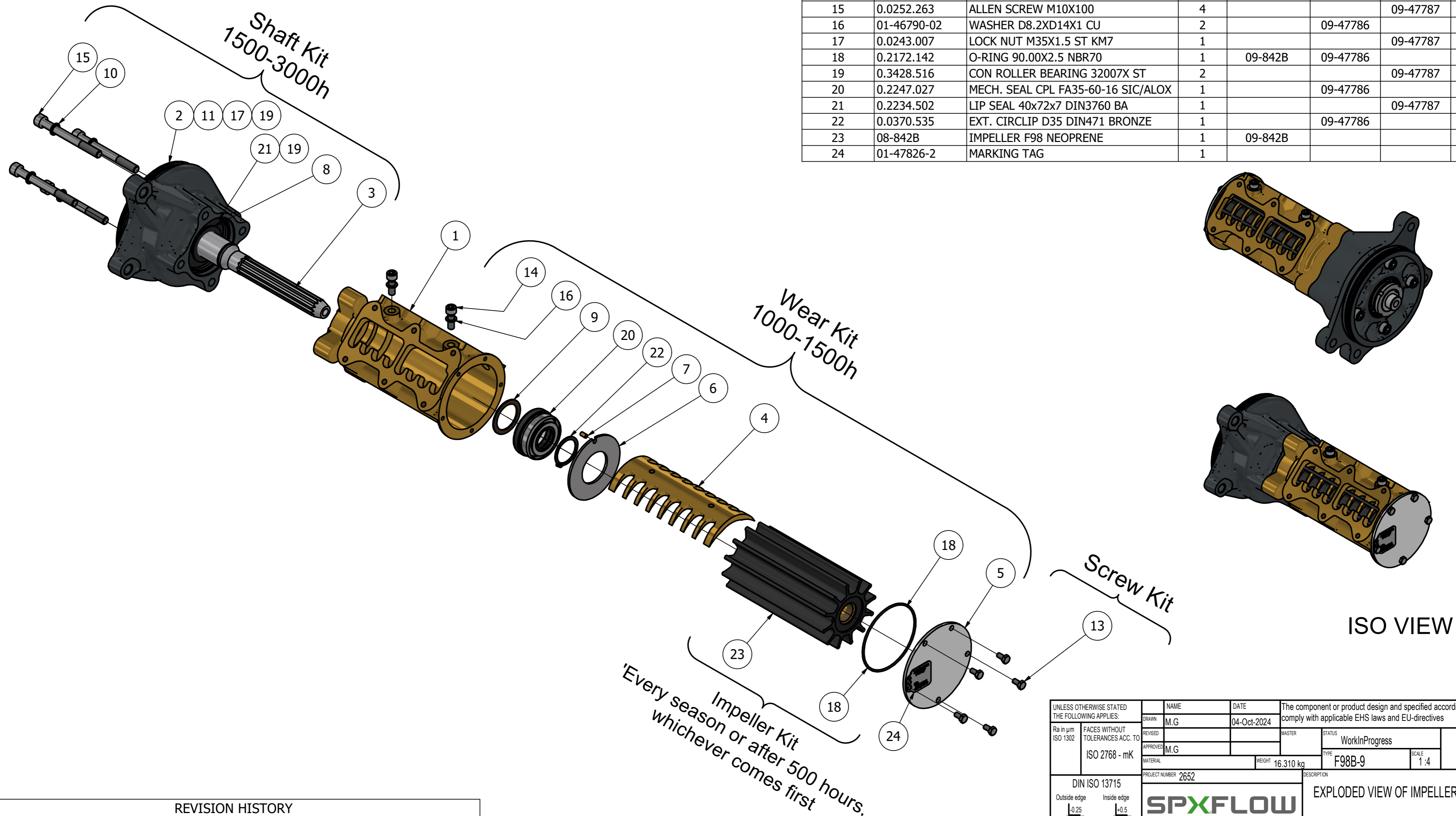


CUSTOMER DETAILS

OEM PUMP PART NO	51.06500-7140
MANUFACTURER	MAN TRUCK & BUS
ENGINE	D2862 LE3XX/LE4XX
PUMP DESCRIPTION	F98B-9 IMPELLER PUMP OEM

PARTS LIST

DRAWING POSITION	COMPONENTS	COMPONENT DESCRIPTION	QTY	IMPELLER KIT	WEAR KIT	SHAFT KIT	SCREW KIT
1	01-13379	PUMP BODY F98B-9	1				
2	01-13495	BEARING HOUSING F98B-9	1			09-47787	
3	01-36061	SHAFT F98B	1			09-47787	
4	01-36062	CAM 1/1 F98B	1		09-47786		
5	01-47771-2	END COVER F8/F9/F95 SS	1		09-47786		
6	01-46538	WEAR PLATE F8/F9/F95 SS	1		09-47786		
7	01-42426	PIN	1		09-47786		
8	01-46524	SLINGER F95B-9	1			09-47787	
9	01-46323	WASHER F95B-	1		09-47786		
10	0.0350.620	WASHER D10.7x16x1.5 (USIT/TREDO)	4				
11	0.0383.007	LOCKING WASHER D35 ST MB7	1			09-47787	
13	0.0138.134	TAP BOLT M6X12 DIN933 A2	5				09-47553-107
14	0.0252.189	ALLEN SCREW M8X25 A4	2		09-47786		
15	0.0252.263	ALLEN SCREW M10X100	4			09-47787	
16	01-46790-02	WASHER D8.2XD14X1 CU	2		09-47786		
17	0.0243.007	LOCK NUT M35X1.5 ST KM7	1			09-47787	
18	0.2172.142	O-RING 90.00X2.5 NBR70	1	09-842B	09-47786		
19	0.3428.516	CON ROLLER BEARING 32007X ST	2			09-47787	
20	0.2247.027	MECH. SEAL CPL FA35-60-16 SIC/ALOX	1		09-47786		
21	0.2234.502	LIP SEAL 40x72x7 DIN3760 BA	1			09-47787	
22	0.0370.535	EXT. CIRCLIP D35 DIN471 BRONZE	1		09-47786		
23	08-842B	IMPELLER F98 NEOPRENE	1	09-842B			
24	01-47826-2	MARKING TAG	1				



Every season or after 500 hours, whichever comes first

ISO VIEW

REVISION HISTORY				
ECN	REV	ECN DESCRIPTION	DATE	SIGN
	P01		18-Oct-2024	M.G

UNLESS OTHERWISE STATED THE FOLLOWING APPLIES:		NAME	DATE	The component or product design and specified according to this drawing must comply with applicable EHS laws and EU-directives	
Drawn	M.G	04-Oct-2024	MASTER	STATUS	WorkInProgress
APPROVED	M.G				
MATERIAL		WEIGHT	16.310 kg	TYPE	F98B-9
PROJECT NUMBER	2652	SCALE	1:4		
DIN ISO 13715		PROJECTION METHOD ISO 128		DESCRIPTION	
Outside edge	±0.25	Inside edge	±0.5	EXPLODED VIEW OF IMPELLER PUMP F98B-9	
				DRAWING NUMBER	10-00010-12
					REVISION
					P01

This Drawing/Document and information shown contains proprietary information of SPX FLOW and must not without permission and written consent be reproduced, copied, transmitted, transferred, disclosed, undue use, shown or handed out to any unauthorized person and is to be maintained in confidence.