

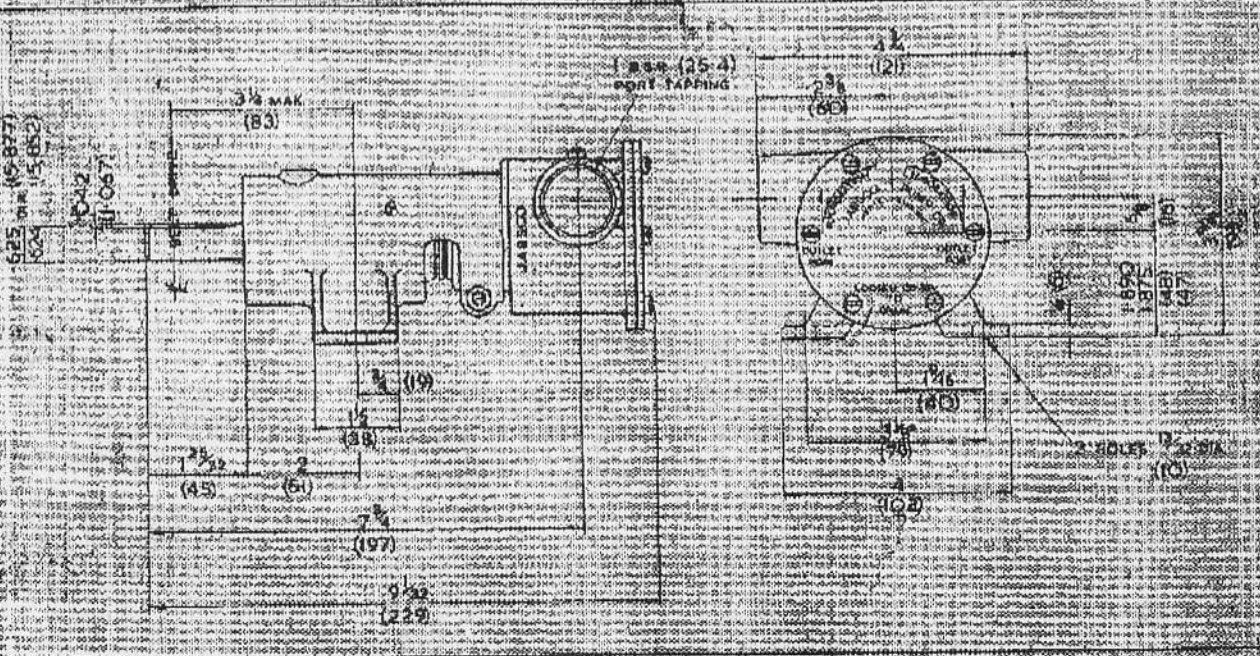
# Technical Data

Model 9710-200

## OPERATING INSTRUCTIONS

- 1 Installation:** Pump may be mounted in any position. The rotation of the pump shaft determines the location of the pump's intake and discharge ports, (refer to dimensional drawing). Before installing, turn the pump shaft in the direction of the operating rotation.
- 2 DRIVE:** Belt or Direct with flexible coupling.  
**Belt Drive:** Overlight belt load will reduce pump bearing life.  
**Direct Drive:** Clearance should be left between drive shaft and pump shaft when installing coupling. Always mount and align pump and drive shaft before tightening the coupling set screw.
- 3 Speeds:** 100 rpm to the maximum shown in the performance table. For longer pump life, operate at lowest possible speeds.
- 4 Model 9710-200 is self priming over a wide speed range.** With suction lift up to 15 feet and suction lift up to 22 feet when primed. Intake lines must be air-tight to ensure self priming.  
**Note:** Pump will prime when impeller is DRY, but suction lift of up to 15 feet is only obtainable when impeller is *greased or lubricated* with liquid being pumped. Priming performance figures stated are for water at ambient temperature and at 1600 rpm.
- 5 Running Dry:** Unit depends on liquid pumped for lubrication. *Do not run dry* for more than 30 seconds. Lack of liquid will burn the impeller.
- 6 Caution:** Do not pump petroleum derivatives, solvents, thinners, highly concentrated or organic acids. If corrosive fluids are handled, pump life will be prolonged, if flushed with water after each use or after each work day.
- 7 Pressures:** For continuous operation, pressure should not exceed 30 psi for the standard Model 9710-200.
- 8 Temperatures:** 45°-180°F.
- 9 Freezing Temperatures:** Drain unit by loosening endcover. Most methyl alcohol (methanol) based anti-freezes can be used. *Do not use petroleum base anti-freeze compounds or rust inhibitors.*
- 10 Gasket:** Use standard pump part. A thicker gasket will reduce priming ability. A thinner gasket will cause impeller to bind.
- 11 Spare Parts:** A Jabco Service Kit should be kept on hand to rebuild all but the most badly worn pumps.

## DIMENSIONAL DRAWING



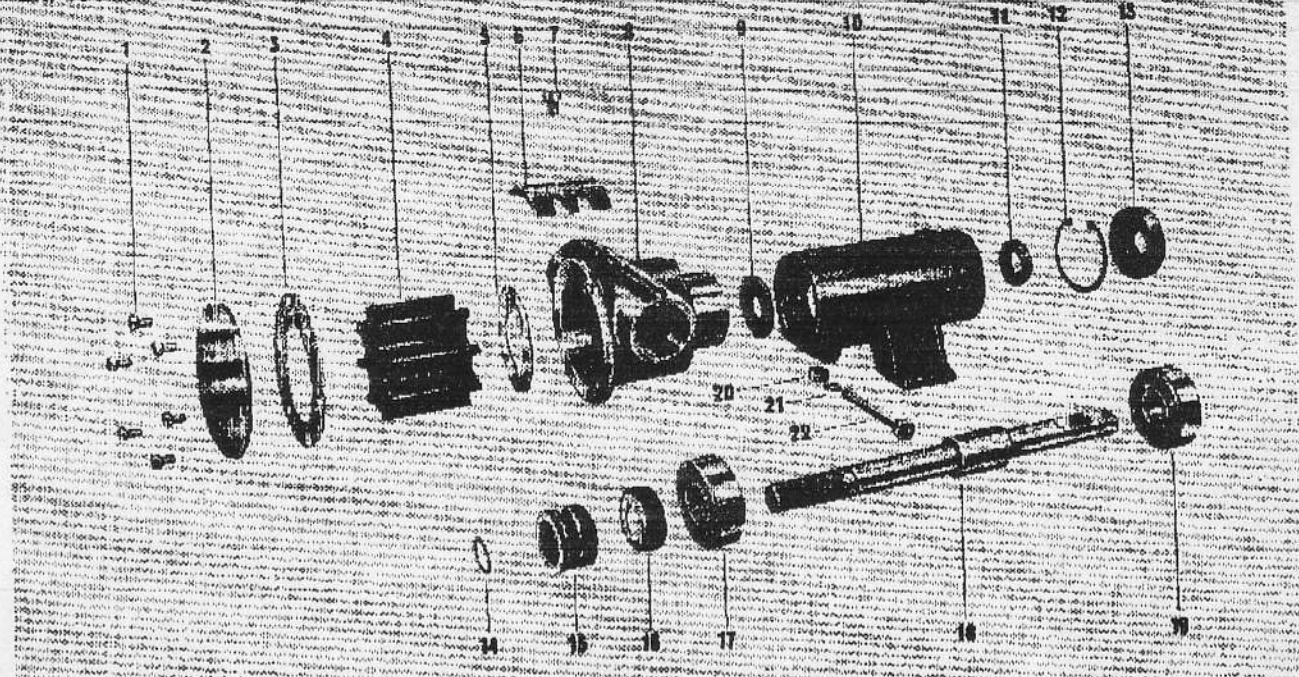
ITT FLUID HANDLING LIMITED

BELCON INDUSTRIAL ESTATE, ESSEX ROAD, HODDESDON, HERTS., EN11 0BU  
TELEPHONE: HODDESDON 67191 TELEGRAMS: JABSCC, HODDESDON TELEX: 282251

Manufacturers of Jabco and Marlow Pumps; Bell & Gossett Compressors and Vacuum Pumps

ITT

**EXPLODED VIEW**



**Insist on genuine Jacobs parts.**  
**Made only by the original and world leading manufacturer of self-priming flexible neoprene diaphragm pumps.**

**PARTS LIST**

Key	Description	Qty	Part No.
1	End Cover Screws	6	SP1003-09
2	End Cover	1	9715-200, -204, 205-237
3	Gasket	1	890
	Gasket Model 9710-204	1	3101
	Gasket Model 9710-205	1	2432
4	Impeller	1	920
	Model 9710 237	1	920-37
5	Wearplate	1	4156
6	Cam Model 9710-200, 237	1	934
	Cam Model 9710-204	1	3255
	Cam Model 9710-205	1	2431
7	Cam Screw Models 9710-200, -237	1	SP1004-09
	Cam Screw Model 9710. 204	1	SP1004-10
	Cam Screw Model 9710-205b	1	SP1004-10
8	Body	1	10329-200
9	Slinger	1	3180
10	Bearing Housing	1	10930
11	Seal (Bearing)	1	GP2703 02
12	Retaining Ring	1	SP1701 1B6
13	Seal (Bearing)	1	SP2700-47
14	Shaft Retaining Ring	1	SP1700-62
15	Primary Seal	1	SP6080 07
16	Seal Seat	1	SP8022-07
	Cup Rubber	1	9722
17	Ball Bearing	1	SP2600 38
18	Shaft	1	9717
19	Ball Bearing	1	SP2600-38
20	Nut	1	SP1105-03
21	Washer	1	SP1602-06
22	Bolt	1	SP1095 09

**SERVICE KIT**

Pump model number	Service kit number
9710-200	SK229
9710-204	SK229-04
9710-205	SK229 01
9710-237	SK229-37

**Service kit includes:**

- Gasket
- Impeller
- End Cover Screws
- Seal
- Seal Seat
- Cup Rubber
- Retaining Ring

