

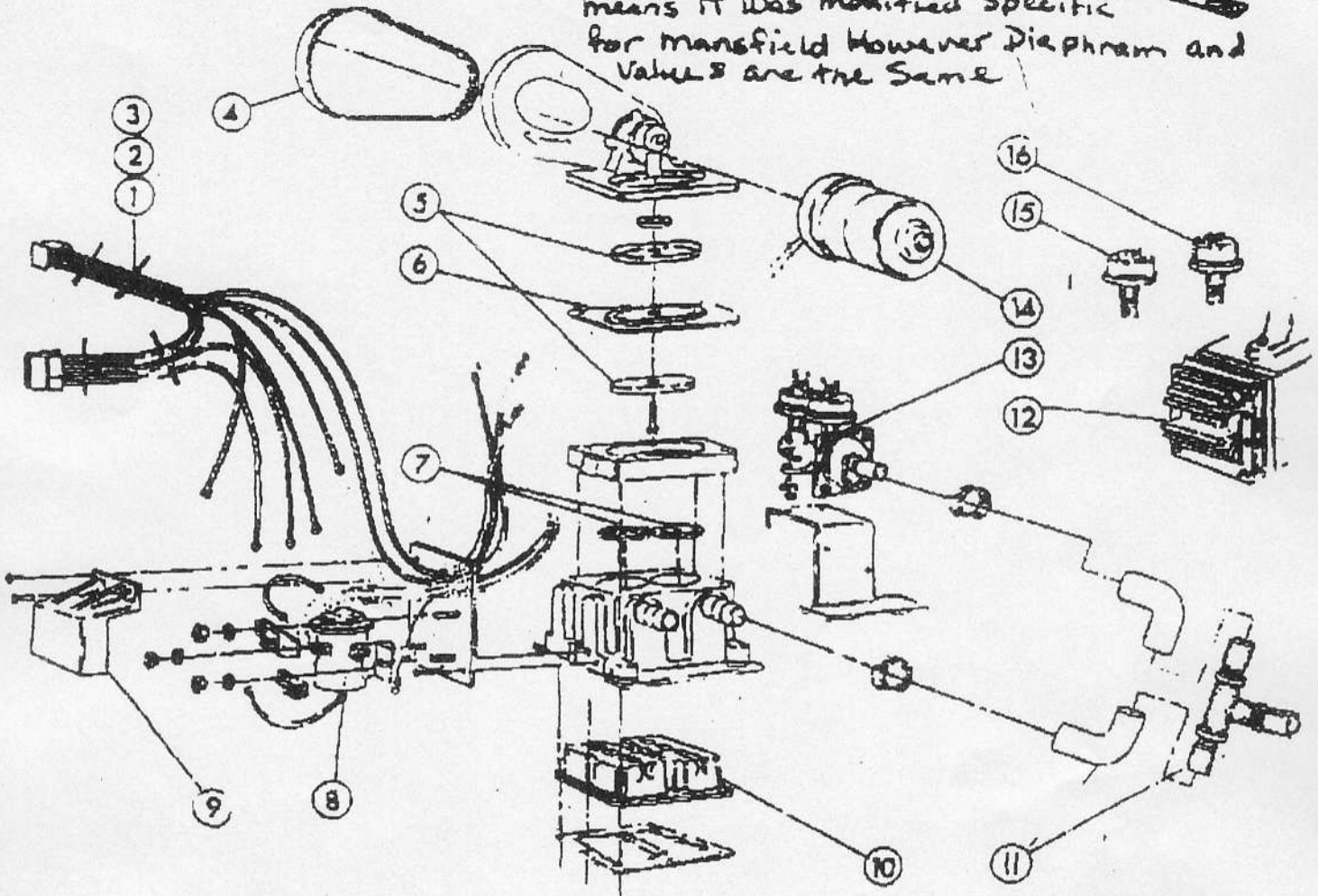
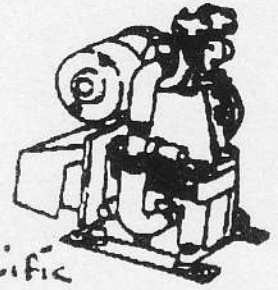
# REPLACEMENT PARTS LIST

MODEL NO.  
32V/6132  
12V/6112 - 24V/6124  
VACUUM PUMPS

Vac Switches  
Chris has info on  
Direct replace.

Peters + Russell pump  
Bought by Jobsco

#6685-J Dash J  
means it was modified Specific  
for mansfield However Diaphragm and  
Valves are the Same



Note (Drip Proof Cover Not Shown)

## COMPONENTS & PARTS LIST

| KEY | PART NO. | DESCRIPTION            |
|-----|----------|------------------------|
| 1   | 6734     | HARNESS - VAC PUMP 24V |
| 2   | 6734     | HARNESS - VAC PUMP 32V |
| 3   | 6243     | HARNESS - VAC PUMP 12V |
| 4   | 6871     | BELT                   |
| 5   | 7220     | BACKING PLATE ASSY.    |
| 6   | 6874     | PUMP DIAPHRAGM         |
| 7   | 6893     | CHECK VALVES (QTY. 2)  |
| 8   | 5831     | (12V) SOLENOID ASSY.   |
| 8   | 6836     | (32V) SOLENOID ASSY.   |
| 8   | 6900     | (24V) SOLENOID ASSY.   |
| 9   | 6239     | TERMINAL BOARD COVER   |
| 10  | 7221     | SURGE CHAMBER          |
| 11  | 6871     | HOSE ASSY.             |

| KEY | PART NO. | DESCRIPTION   |
|-----|----------|---|
| 12  | 6873     | 24V/32V MINI CONVERTER  |
| 13  | 6872     | MANIFOLD ASSY. - COMPLETE   |
| 14  | 6882     | 12V MOTOR WITH TERMINALS  |
| 14  | 6899     | 24V MOTOR WITH TERMINALS  |
| 14  | 5148     | 32V MOTOR WITH TERMINALS  |
| 15  | 6835     | 18" VACUUM SWITCH   |
| 16  | 5825     | 6" VACUUM SWITCH  |
| 17  |          | DRIP PROOF COVER<br>(NOT REPLACABLE)                                    |
|     | 8980     | MANIFOLD/PUMP REPAIR KIT<br>(INCLUDES 6, 7, 15, 16 & 6887<br>DIAPHRAGM) |

Post-it Fax Note

7871

Date 9/15/97 pages 1

|           |       |      |         |
|-----------|-------|------|---------|
| To        | Jim   | From | Kelly   |
| Co. Dept. | Duper | Co.  | Sealand |