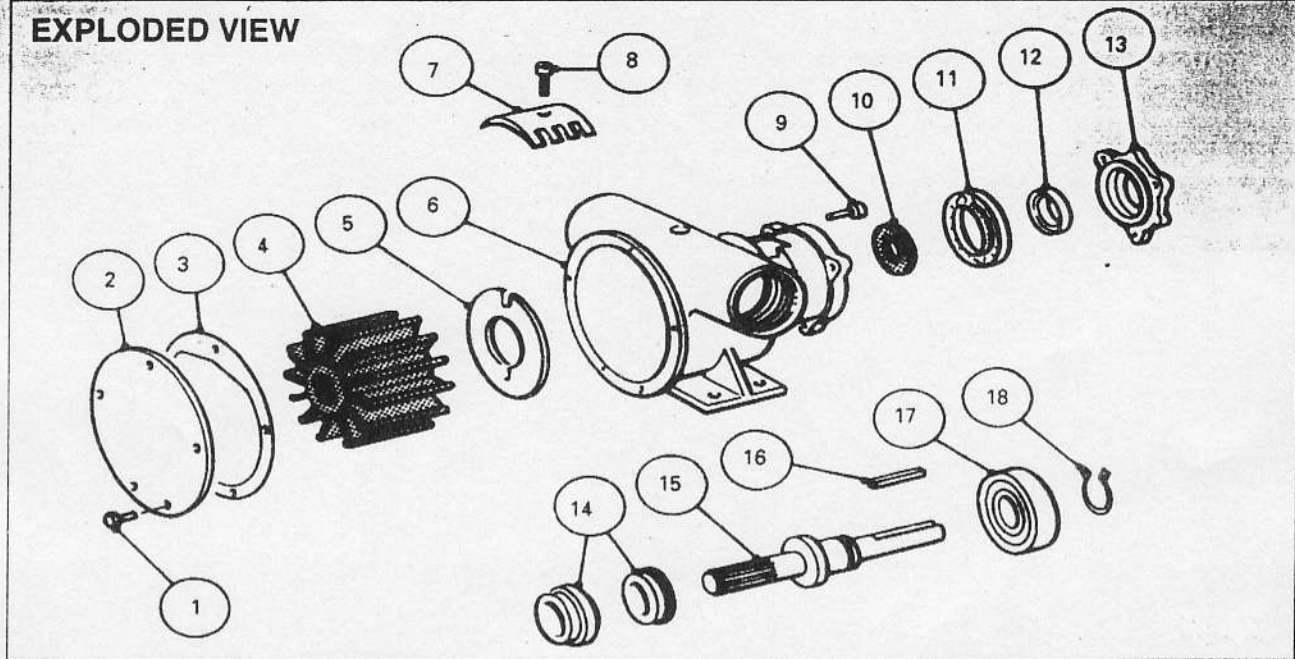


EXPLODED VIEW



PARTS LIST MODEL 52200-2011

Key	Description	Qty	Part No	Key	Description	Qty	Part No
1	Endcover Screw*	5	X3001-176F	10	Slinger	1	3181
2	Endcover	1	9336	11	Inner Bearing Seal	1	SP2700-50
3	Gasket*	1	816	12	Outer Bearing Seal	1	SP2701-1013
4	Impeller*	1	17935-0001B	13	Outboard Seal Housing	1	52201-0000
5	Wearplate	1	2574	14	Seal Assembly*	1	21849
6	Body	1	50204-2100	15	Shaft	1	52207-0000
7	Cam	1	834	16	Key	1	X4000-567A
8	Cam Screw	1	SP1005-07	17	Bearing	1	SP2600-04
9	Screw	3	X3003-178F	18	Retaining Ring	1	SP1700-245
					Spline Seal	1	4346

Options:-

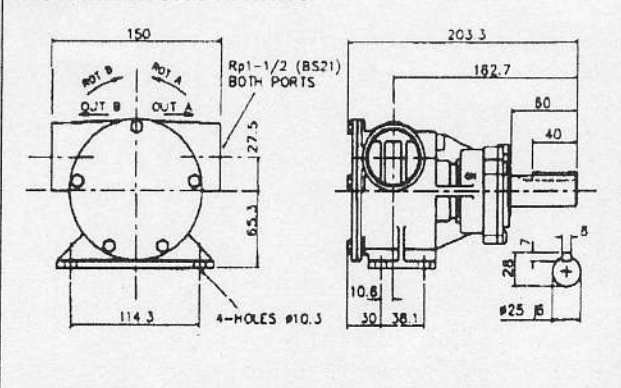
Std. Pressure Neoprene Impeller
 High Pressure Neoprene Impeller
 Nitrile Impeller

Part No 836-0001B
 Part No 807-1001B
 Part No 17935-0003B
 or 836-0003
 Part No 2551
 Part No SP1005-05

1/2 Cam
 1/2 Cam Screw

Service Kit No SK407-0011
 Contains Parts marked*

INSTALLATION DRAWING



SERVICE INSTRUCTIONS

Dis-Assembly Inspect all parts for wear or damage and replace if necessary

1. Remove endcover screws, endcover and gasket.
2. Remove impeller.
3. Loosen cam screw and remove cam, (clean off old jointing compound).
4. Remove wearplate.
5. Remove seal assembly.
6. Remove fixing screws and outboard seal housing, together with seal.
7. Press shaft on impeller drive end to remove shaft and bearing from pump. Heating outside of body will ease dis-assembly.
8. Remove bearing retaining ring from shaft.
9. Supporting bearing inner race, press shaft through bearing.
10. Remove inner bearing seal if it needs replacing.

Assembly

1. Lubricate inner bearing seal with grease and press into body bearing seal bore with lip facing away from bearing bore.
2. Press shaft into bearing, supporting inner race of bearing. Fit bearing retaining ring onto shaft.
3. Position slinger in body drain area. Insert splined end of shaft through bearing bore and guide slinger over shaft until bearing contacts body.
4. Fit new outer bearing seal in outboard seal housing and fit to pump, securing with retaining screws.
5. Fit seal seat and cup rubber, with seal seat facing towards impeller bore. Fit seal with carbon face towards face of seal seat. Replace spacer.
6. Install wearplate in body bore, aligning slot in wearplate with dowel pin in body.
7. Coat cam screw threads, and top of cam with a non setting jointing compound. Install in body.
8. Lightly grease impeller bore and start impeller into bore with a rotary motion until splines engage, then push into bore.
9. Fit endcover and gasket and secure with endcover screws.