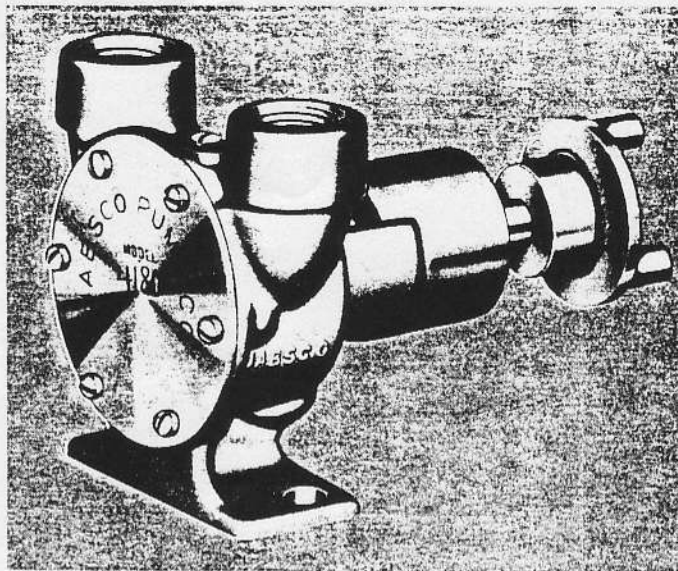


# JABSCO®

## Ball Bearing Pump



4180



For GRAY MARINE ENGINES: Lugger Six-244, Express Six-244, Model 115, Model 120 Model 135, Model 136, Six-244, Phantom Six-135, Fireball 140, Fireball 160, and Phantom Six-125

PART NUMBER	DESCRIPTION	QTY. REQ.	PART NUMBER	DESCRIPTION	QTY. REQ.
4184	Body	1	SP 1002-02	Screw, End Cover	6
4185	End Cover	1	SP 1003-01	Screw, Cam	1
3487	Shaft	1	SP 1700-248	Retaining Ring (Int.)	1
3286	Slinger	1	SP 1700-249	Retaining Ring (Ext.)	1
3298	Gasket	1	SP 2000-21	"O" Ring	1
1212-08	Impeller	1	SP 2600-07	Ball Bearing	1
3166	Seal Spacer	1	SP 2700-06	Seal, Shaft	1
915	Brg Seal-Outer	1	SP 3100-07	Roll Pin	1
7884	Cam & Wearplate (Assembly)	1	SP 2700-18	Bearing Seal	1
			4875	Coupling	1

SK-33 Service Kit

For Price Information,

("Pumps & Parts Price Book")



# JABSCO®

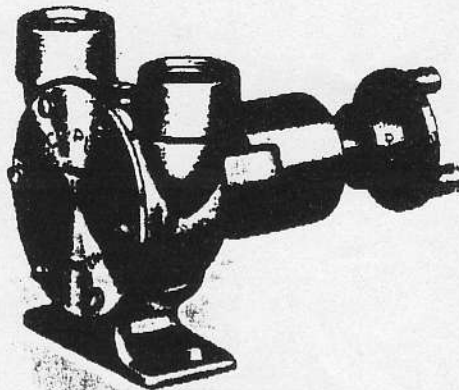
## PUMP COMPANY

1485 DALE WAY • COSTA MESA, CALIF.

Patented and  
Parents Pending

# MODEL 4180

3/4" PIPE SIZE



APPROX. WT. 4 LBS.

# JABSCO

SELF PRIMING BRONZE  
BALL BEARING  
MARINE PUMP

DESIGNED FOR THE FOLLOWING GRAY MARINE ENGINES

Lugger Six - 244  
Express Six - 244  
Model - 115

Model - 120  
Model - 135  
Phantom Six - 135

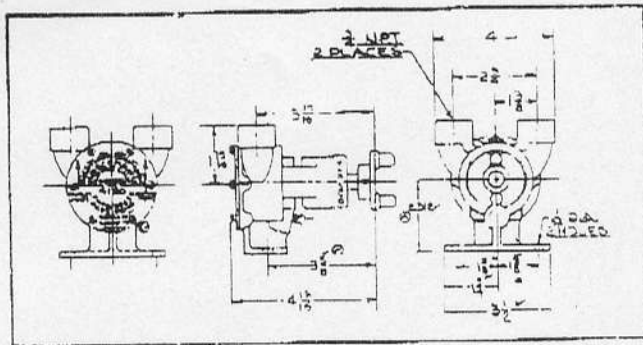
Fireball Six - 140  
Fireball Six - 15C  
Fireball Six - 16C

Six - 330  
Super Six - 330  
Super Six - 363

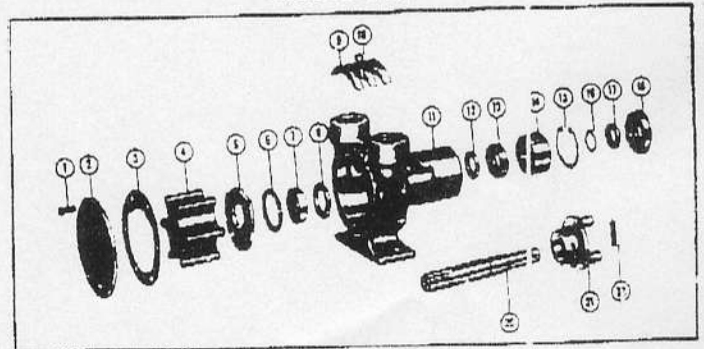
Model - 150  
Model - 165  
Model - 175

[ Replaces GRAY # 75189 (M.P. 9350) Pump - Use GRAY MARINE Bracket Part # 59402 ]

INSTALLATION DRAWING



EXPLODED VIEW



### PARTS PRICE LIST

KEY	DESCRIPTION	QTY.	PART NUMBER
1	SCREWS (End Cover)	6	SP-1002-02
2	END COVER	1	4185
3	GASKET	1	3298
4	IMPELLER ASSEMBLY	1	1000-00/210
5	WEAR PLATE	1	3266
6	"O" RING	1	SP-2000-21
7	SEAL (Shaft)	1	SP-2700-06
8	SEAL SPACER	1	3166
9	CAM	1	3269
10	SCREW (Cam)	1	SP-1003-01
11	BODY	1	4184

KEY	DESCRIPTION	QTY.	PART NUMBER
12	SLINGER	1	286
13	SEAL (Inner Bearing)	1	P-2700-18
14	BEARING	1	P-2600-07
15	RETAINING RING (Brg. to Body)	1	P-1700-248
16	RETAINING RING (Shaft to Brg.)	1	P-1700-249
17	VELT WASHER (Outer Bearing)	1	716
18	SEAL (Outer Bearing)	1	715
20	SHAFT	1	3487F
21	COUPLING	1	4875
22	PIN	1	SP-3100-07

JABSCO

PUMP CO.

BURBANK, CALIFORNIA