

### TOPSIDER GALLEY PUMP INSTALLATION INSTRUCTIONS

Pump is completely assembled and needs only to be mounted as follows:

1. Drill 7/8" hole in desired location, well above water supply tank to avoid syphon action.
2. Remove nut and lock washer from pump tail piece, and extend tail piece through drilled hole. Reinstall washer and nut, do not tighten more than required to hold faucet firmly.
3. Connect plumbing directly to the 1/2" threaded (QEST†) type tail piece or use 1/2" barbed hose adaptor (provided).

NOTICE: When pumping, pull and push in-line with pump cylinder. Side loads to the body should be avoided for efficient long-life operation.

### SERVICE INSTRUCTIONS

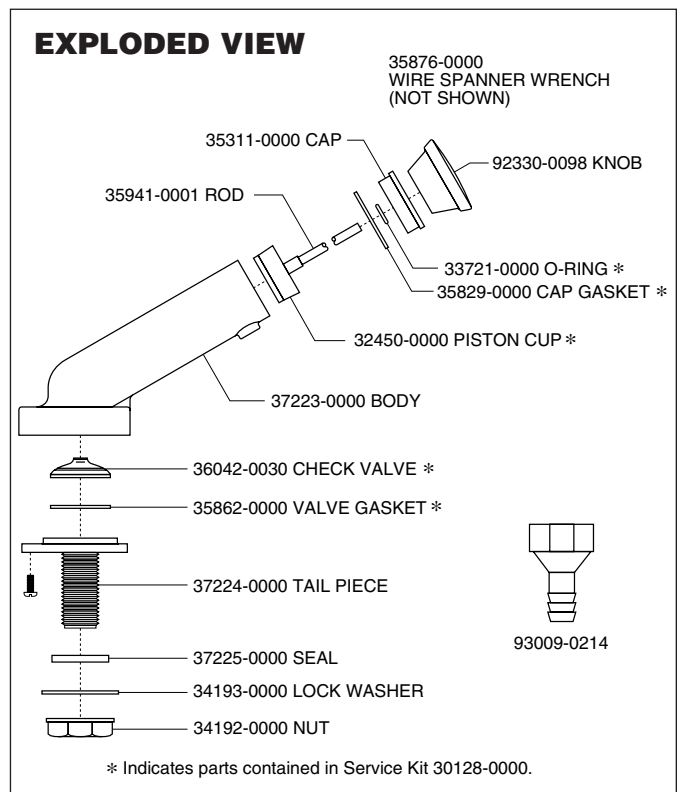
Pump may be serviced, cleaned and drained as follows:

1. Pump may be completely disassembled for cleaning, service and draining.
2. To remove piston assembly, unthread top cap using wire spanner wrench and pull assembly from body.
3. To replace O-ring, remove knob, top cap and pick damaged O-ring from groove in brass bushing molded into cap. Install new O-ring and replace cap assembly being careful not to cut O-ring with shaft threads.

† QEST is a registered trademark of U.S. Brass.



Model 37220-1010



## Jabsco



**ITT Industries**  
*Engineered for life*

U.S.A.  
Jabsco  
20 Icon  
Foothill Ranch, CA 92610-3000  
Tel: 949.609.5106  
Fax: 949.859.1254

UNITED KINGDOM  
Jabsco  
Bingley Road, Hoddesdon  
Hertfordshire EN11 OBU  
Tel: +44 (0) 1992 450145  
Fax: +44 (0) 1992 467132

CANADA  
Fluid Products Canada  
55 Royal Road  
Guelph, Ontario N1H 1T1  
Tel: (519) 821.1900  
Fax: (519) 821.2569

JAPAN  
NHK Jabsco Company Ltd.  
3-21-10, Shin-Yokohama  
Kohoku-Ku, Yokohama, 222  
Tel: 045.475.8906  
Fax: 045.475.8908

GERMANY  
Jabsco GmbH  
Oststrasse 28  
22840 Norderstedt  
Tel: +49-40-53 43 73 -0  
Fax: +49-40-53 53 73 -11

THE PRODUCT DESCRIBED HEREIN IS SUBJECT TO THE JABSCO ONE YEAR LIMITED WARRANTY, WHICH IS AVAILABLE FOR YOUR INSPECTION UPON REQUEST.