

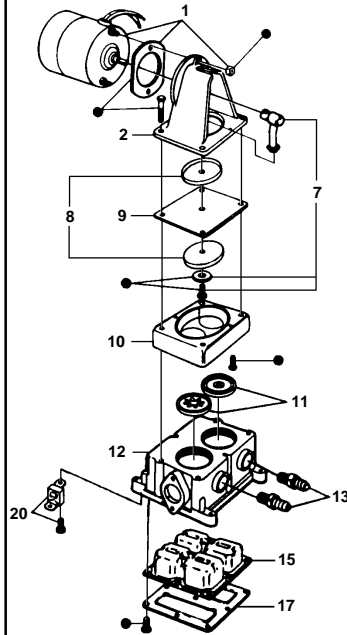
Bilge Pump Replacement Parts

Choose from a line of quality water systems designed to meet your needs.

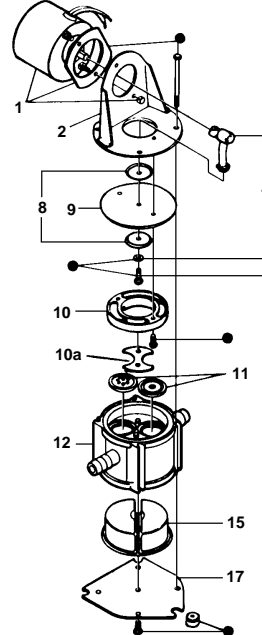
* Indicates Parts Contained in Service Kit.
† Indicates Parts Supplied with Base Assy.

NOTE 1 – For Model 37201-0000 use replacement motor number 30202-0000 (12 Volt Only).

NOTE 2 – For Model 37201-0000 use 2 each 35983-0000 diaphragm plates.



● Indicates items included in Hardware Kit (Key 21).



● Indicates items included in Hardware Kit (Key 21).

36960-Series (Was 6960 J)

37202-Series (Was 7202)

Part Description	Key	Part Number	Qty.	Series		Part Number	Qty.
				(1000)	(2000)		
Motor Kit	1	30202-0000	1	X	X	30201-0000 - See Note 1	1
		30201-0010				30200-0040	
		30202-0020					
Motor Mount	2	35487-0000	1	X	X	35797-0000	1
Small Pulley	3						
Large Pulley	4						
Belt	5						
Jack Shaft Assembly	6						
Connecting Rod Assembly	7	30040-0000	* 1	X	X	30040-0000	* 1
Diaphragm Plate	8	35688-0000	2	X	X	35688-0000 - See Note 2	2
Diaphragm	9	30015-0000	* 1	X	X	37174-0000	* 1
Retainer	10	35455-0000	1	X	X	35788-0000 - Retainer	1
						35816-0000 - Plate	1
Valve Set (Inlet & Outlet)	11	30003-0000	* † 1 set	X	X	30005-0000	* 1 set
Base Assembly (See †)	12	35620-0000	† 1	X		35795-0000	† 1
		44114-1000	† 1		X		
Ports (Inlet & Outlet)	13	37175-0000	† 1	X	X		
Small Pulsation Dampener	14						
Pulsation Dampener	15	37178-0000	† 1	X		37179-0000	* 1
		44127-1000	† 1		X		
Small Bottom Plate	16						
Bottom Plate	17	35686-0000	† 1	X	X	35798-0000	* 1
Surge Chamber	18						
Gaskets	19						
Vibration Pad Kit (with SS feet)	20	37180-0000	† 1 set	X			
		44990-0058	† 1 set		X		
Hardware Kit	21	37166-0000	1 set	X		37168-0000	1 set
		43990-0060	1 set		X		
Service Kit (See *)		30120-0000	*	X		37182-0000	*
		43990-0063	*		X		

**Pumpgard In-Line
Bilge Pump Strainer**
36200-0000 3/4" Hose Barb
36200-1000 5/8" Hose Barb

REPLACEMENT SCREEN	36139-0000
O-RING	36403-0000
CLEAR BOWL	44070-0000