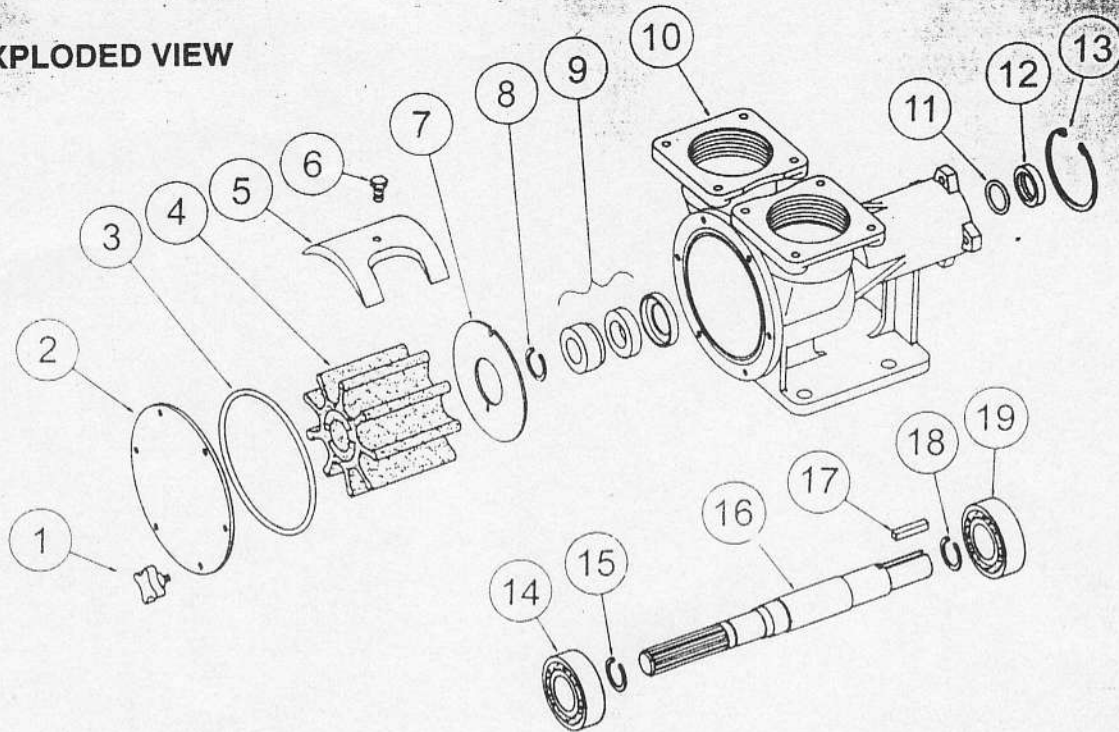


EXPLODED VIEW



PARTS LIST MODEL 29860-2201

Key	Description	Qty	Part No
1	Endcover Screws	4	X5255-002
2	Endcover	1	29865-0000
3	'O' Ring *	1	X4020-424A
4	Impeller *	1	17240-0001B
5	Cam	1	29862-0200
6	Cam Screw	1	X3001-207F
7	Wearplate	1	29866-0000
8	Retaining Ring	1	SP1700-3015
9	Seal Assembly *	1	21849
10	Body	1	29864-2000
11	Slinger	1	X4020-324A
12	Bearing Seal	1	SP2701-54
13	Retaining Ring	1	SP1701-244
14	Bearing	1	SP2601-0458
15	Retaining Ring	1	SP1700-3014
16	Shaft	1	29867-0000
17	Key	1	X5271-002
18	Retaining Ring	1	SP1700-3014
19	Bearing	1	SP2601-0458

Service Kit No SK412-0001 Contains Parts marked *

SERVICE INSTRUCTIONS

Dis-Assembly Inspect all parts for wear or damage and replace if necessary

1. Remove endcover screws, endcover and 'O' ring.
2. Remove impeller.
3. Loosen cam screw and remove cam, (clean off old jointing compound).
4. Remove wearplate and retaining ring.
5. Remove seal and assembly.
6. Remove retaining ring.
7. Press on impeller drive end of shaft to remove shaft and bearing assembly and Catch Slinger from body drain area.
8. Remove Bearing Seal.
9. Inspect Bearings, replace if worn.

Assembly

1. Lubricate bearing seal with grease and press into body bearing seal bore with lip facing away from bearing bore.
2. Push bearings onto shaft and up against retaining rings.
3. Position slinger in body drain area. Insert impeller end of shaft and Bearing Assembly through bearing bore and guide slinger over shaft until bearings contact body.
4. Press on bearing outer race, install bearings into bore.
5. Install retaining ring in body groove.
6. Lubricate OD of Cup Rubber and Seat Assembly, then push into place taking care not to damage. Lubricate Rotary Seat Bore and slide over shaft in place. Fit retaining Ring.
7. Install wearplate in body bore, aligning dimple in wearplate with slot in body.
8. Coat screw threads, and top of cam with a non setting jointing compound. Install in body. Wipe of excess.
9. Lubricate impeller bore with a light coat of good quality grease and start impeller into Body with a rotary motion until splines engage, then push into Body bore.
10. Install 'O' Ring and endcover and secure with endcover screws.

INSTALLATION DRAWING

