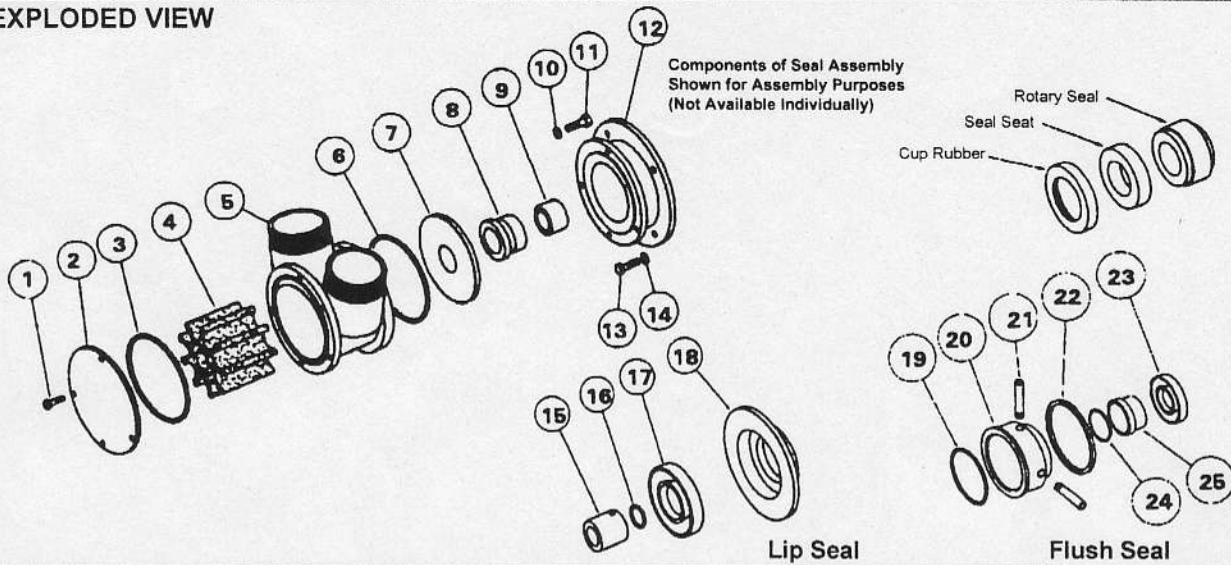


# Jabsco 28680 SERIES

## EXPLODED VIEW



PARTS LIST			MODEL NUMBER WITH APPROPRIATE SEAL OPTIONS				
			Std. Mech.	H/F Mech.	Lip Type	H/F Flushed	Std. Flushed
Key	Description	Qty	28680-2125	28680-2225	28680-2425	28680-2725	28680-2925
1	Screw	4	X3001-209F	X3001-209F	X3001-209F	X3001-209F	X3001-209F
2	Endcover	1	23975-0000	23975-0000	23975-0000	23975-0000	23975-0000
3	"O" Ring	1	SP2000-1213	SP2000-1213	SP2000-1213	SP2000-1213	SP2000-1213
4	Impeller*	1	21899-0005B	21899-0005B	21899-0005B	21899-0005B	21899-0005B
5	Body	1	23974-2000	23974-2000	23974-2000	23974-2000	23974-2000
6	"O" Ring	1	SP2000-1213	SP2000-1213	SP2000-1213	SP2000-1213	SP2000-1213
7	Wearplate	1	28636-0000	28636-0000	See Below	28636-0000	28636-0000
8	Seal Assembly*	1	22644-6000	22644-6200	See Below	22644-6200	22644-6000
9	Seal Spacer	1	28637-0000	28637-0000	28637-0000	28637-0000	28637-0000
10	Washer	4	X3080-101F	X3080-101F	X3080-101F	X3080-101F	X3080-101F
11	Screw	4	X3001-211F	X3001-211F	X3001-211F	X3001-211F	X3001-211F
12	Adaptor	1	22254-0020	22254-0020	22254-0020	22254-0020	22254-0020
13	Screw	4	X3001-242F	X3001-242F	X3001-242F	X3001-242F	X3001-242F
14	Washer	4	X3080-111F	X3080-111F	X3080-111F	X3080-111F	X3080-111F
Lip Seal Kit No. & Contains			-	-	28631-0403B	-	-
15	Seal Spacer	1	-	-	PART NUMBERS AVAILABLE ON REQUEST	-	-
16	"O" Ring	1	-	-		-	-
17	Seal	1	-	-		-	-
18	Wearplate	1	-	-		-	-
Flush Seal Kit No. & Contains			-	-	-	28632-0010B	28632-0010B
19	"O" Ring	1	-	-	-	X4020-269A	X4020-269A
20	Seal Housing	1	-	-	-	28512-0000	28512-0000
21	Tube	2	-	-	-	21844	21844
22	Adaptor Ring	1	-	-	-	28626-0000	28626-0000
23	Seal	1	-	-	-	SP2701-0916	SP2701-0916
24	"O" Ring	1	-	-	-	X4020-237A	X4020-237A
25	Spacer	1	-	-	-	28627-0000	28627-0000
Service Kit Contains*			SK315	SK315-0225	SK315-0425	SK315-0225	SK315

## SERVICE INSTRUCTIONS

### Dis-Assembly

1. Remove screws (1), endcover and "O" ring (3). Remove screw (11) and washer (10) and slide off body complete with impeller. Push out impeller and "O" ring (6) from body.
2. Remove wearplate (7) and prise out seal seat and cup rubber.
3. Gently lever the spacer (9) and rotary seal off the shaft. REMOVAL OF THE FOLLOWING PARTS IS NOT NECESSARY FOR NORMAL SERVICING. HOWEVER, IF REQUIRED THEN AS FOLLOWS:
4. Remove screws (13) and washers (14) and slide off adaptor (12).

**Pumps With Lip Seal:-** Push out lip seal (17) from wearplate (18). Loosen set screws to remove spacer (15) and prise out "O" ring (16) from spacer.

**Pumps With Flush Seal:-** After removing rotary seal (6) unscrew tubes (21). Pull out seal spacer (25), and prise out "O" ring (24). Pull out seal housing (20) and remove "O" ring (19) and then press out lip seal (23) from it. It is not necessary to remove adaptor ring (22).

### Assembly

1. Slide seal spacer (9) on shaft and then smear shaft with oil and push rotary seal gently until it touches the spacer.
2. Fit adaptor (12) to motor-face with screws (13) and washers (14).
3. Fit cup rubber and seal seat to wearplate and slide it into position.
4. Fit impeller into lubricated body with a twisting motion in the same rotation as motor. Fit "O" ring (6) into body and slide it into position over shaft.
5. Align wearplate and body with adaptor and secure with screws (11) and washers (10). Do not overtighten, a gap between adaptor and body is normal. These screws and endcover screws should be tightened to a torque of 13.5 Nm.
6. Fit "O" ring (3) into body and place endcover over body and secure with screws (1).

**Pumps With Lip Seal:-** Fit "O" ring (16) into seal spacer (15) and smear spacer and shaft with lubricating oil. Slide spacer (15) over shaft and secure with set screws to dimension shown (0) i.e. flush with wearplate. Press lip seal (17) into wearplate (18) and slide into position over shaft, then follow on from step (4) above.

**Pumps With Flush Seal:-** Fit "O" ring (24) under seal spacer (25) and smear both spacer and shaft with oil and slide spacer up to shaft shoulder. Fit adaptor ring (22) into adaptor. Press lip seal (23) into seal housing (20) and slide into position. Fit tubes (21) sealing with PTFE tape. Rotary seal and "O" ring (19) can now be fitted. Then follow on from step (4) above.

Inspect all parts for wear or damage and replace if necessary.

## INSTALLATION DRAWING

