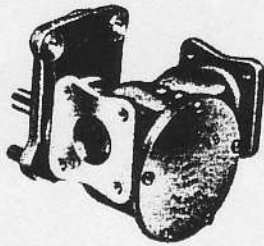


# MODEL 2240

Special Flange-Mounted Model  
for Caterpillar Marine Engines

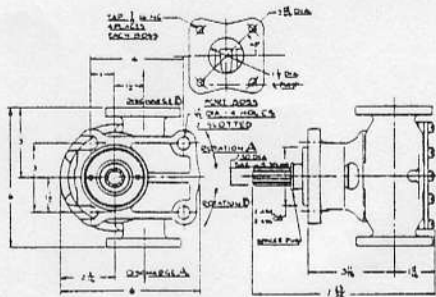
(Series D-11000—D-13000—D-17000)



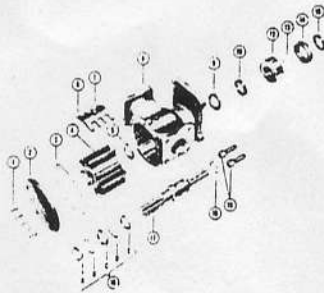
1 1/4" Port Size

Approx. Wt. 14 lbs.

## INSTALLATION DRAWING



## EXPLODED VIEW



## PARTS LIST

### STANDARD MODEL 2240—1 1/4"

KEY	DESCRIPTION	QTY.	PART NO.
1	SCREW (End Cover to Body)	5	SP-1005-04
2	END COVER	1	2270
3	GASKET	1	816
4	IMPELLER (Assembly)	1	836
5	SEAL SEAT	1	2247
6	CAM	1	834
7	SCREW (Cam to Body)	1	SP-1005-04
8	BODY	1	2245
9	SLINGER	1	3181
10	BEARING SEAL	1	817
12	BALL BEARING	1	SP-2600-04
13	RETAINING RING	1	SP-1700-245
14	LOCATING RING	1	2586
15	OIL SEAL	1	SP-2700-10
16	COMPLETE SEAL ASSEMBLY	1	1814
	A-Marcel Washer	1	707
	B-Neoprene Washer	1	686
	C-Ferrule	1	833
	D-"O" Ring	1	SP-2000-40
	E-Carbon Seal	1	410
	SHAFT	1	2246
	SPACER RING	1	2861
10	SOCKET HEAD CAP SCREW	2	SP-3005-01

## ENGINE NAME AND MODEL

Caterpillar Series—D-11000—D-13000—D-17000

# HEAD CAPACITY TABLE

MODEL 2240

TOTAL HEAD		500 RPM	870 RPM	1450 RPM	1750 RPM	2200 RPM
Lbs. per Sq. In.	Ft. of Water	GPM	GPM	GPM	GPM	GPM
4.3	10	15.2	27.0	45.6	54.9	61.3
8.7	20	14.6	26.1	43.7	52.5	60.3
13.0	30	13.9	24.8	41.1	49.2	58.6
17.3	40	13.2	23.4	38.1	45.7	56.4
21.6	50	12.5	20.5	35.1	41.8	53.2

## OPERATING INSTRUCTIONS

- INSTALLATION**—Pump may be mounted at any angle without loss of efficiency. The rotation of the motor shaft determines the location of the pump's intake and discharge ports. Before installing, turn pump shaft in direction of operating rotation.
- DRIVE**—Direct
- SPEEDS**—100 RPM to the maximum shown in the performance table. For longer pump life, operate at lowest speeds permissible.
- SELF-PRIMING**—Unit will operate satisfactorily at low as well as high speeds. For vertical suction lift requirements at maximum of 15 ft., a minimum of 800 RPM is required. Pump will produce suction lift up to 24 ft. when primed. Be sure suction lines are air tight.
- RUNNING DRY**—Unit depends on liquid pumped for lubrication. **DO NOT RUN DRY** for more than 30 seconds. Lack of liquid may burn the impeller.
- PRESSURES**—For continuous operation, pressure should not exceed 30 pounds for the standard Model 2240.
- TEMPERATURES**—45-120°F. Use standard impeller. 45-180°F. Use special .08 impeller.
- FREEZING WEATHER**—Drain unit by loosening end cover plate. For closed systems, use only Atlas "Permaguard" or Du Pont "Zerex" anti-freeze compounds. Do not use petroleum based anti-freeze compounds.
- IMPELLER REPLACEMENT**—Remove end cover. Withdraw impeller by grasping impeller hub with pliers.
- GASKET REPLACEMENT**—Always use standard pump part. A thicker gasket will reduce priming ability. A thinner gasket will cause impeller binding.
- CAM REPLACEMENT**—Coat top surface of new cam and cam screw threads with Permatex #1 or equivalent sealing compound before installing.
- SPARE PARTS**—Avoid costly shut downs by always having a JABSCO Repair Kit on hand #6120.

**WARRANTY:** All products of the company are sold and all services of the company are offered subject to the company's warranty and terms and conditions of sale, copies of which will be furnished upon request.

**JABSCO®** PUMP COMPANY

1485 DALE WAY • COSTA MESA, CALIF.