



# Model 16420-Series

## DRUM PUMP MOTOR

### FEATURES

- Built for overload cut-out.
- **CE** conformance where appropriate.
- Available for 115v ac, 1ph, 50/60 Hz and 230v ac, 1ph, 50Hz supply.
- Available with British, US, or European plugs pre-fitted, or without, where regulations permit.
- Fan cooled brush motor housed in aluminum and nylon drip proof enclosure.
- Oversize ON-OFF rocker switch suitable for operating with gloved hand.

### APPLICATIONS

Motor for use with Jabsco D100 Series Drum Pumps. Pump Tubes available in Stainless Steel, Polypropylene and Kynar for emptying a wide range of chemicals from drums and containers.



Model 16420-Series

### AC MOTOR RANGE

Model No.	Power Supply	F.L. Current	Fuse Size	Plug Fitted	CE Marked
<b>16420-0115</b>	115v ac, 1ph, 50/60Hz, 600 Watts	5.8 Amp	7.5 Amp	USA	No
<b>16420-0115</b>	115v ac, 1ph, 50/60Hz, 600 Watts	5.8 Amp	7.5 Amp	No	No
<b>16420-4115</b>	115v ac, 1ph, 50/60Hz, 600 Watts	5.8 Amp	7.5 Amp	No	Yes
<b>16420-1220</b>	230v ac, 1ph, 50Hz, 540 Watts	2.7 Amp	5.0 Amp	No	No
<b>16420-2220</b>	230v ac, 1ph, 50Hz, 540 Watts	2.7 Amp	5.0 Amp	UK	Yes
<b>16420-3220</b>	230v ac, 1ph, 50Hz, 540 Watts	2.7 Amp	5.0 Amp	European	Yes

### PUMP TUBESETS FOR USE WITH THE ABOVE MOTORS

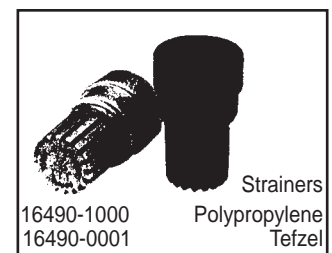
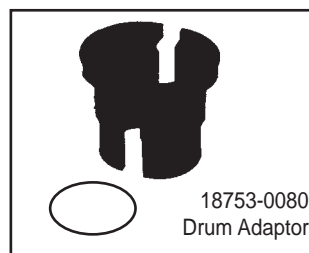
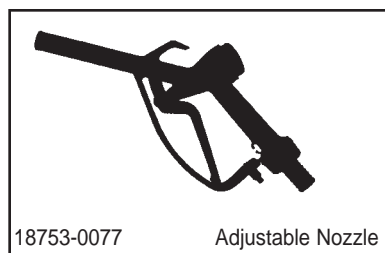
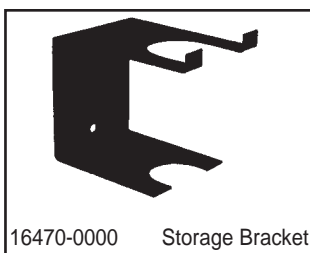
Tube Material	Polypropylene	Stainless Steel	Kynar	Stainless Steel Hygienic
Data Sheet No.	43000-0572	43000-0573	43000-0586	43000-0585

Pump Tubes in these materials are available in 4 lengths:  
0.7m (27"), 0.9m (35"), 1.0m (40"), 1.2m (47")

### OTHER OPTIONS

- D100 Series Drum Pump Tubesets are also available with Air Driven Motor.
- D30 Series, smaller Drum Pumps are available with Polypropylene and Stainless Steel tubesets in 3 lengths: 0.5m (20"), .0.7m (27"), 1.0m (40"), and with 3 Motor Options: 230v ac, 1ph, 50Hz; 115v ac, 1ph, 50/60Hz; Rechargeable Cordless.

### ACCESSORIES



**WARNING**

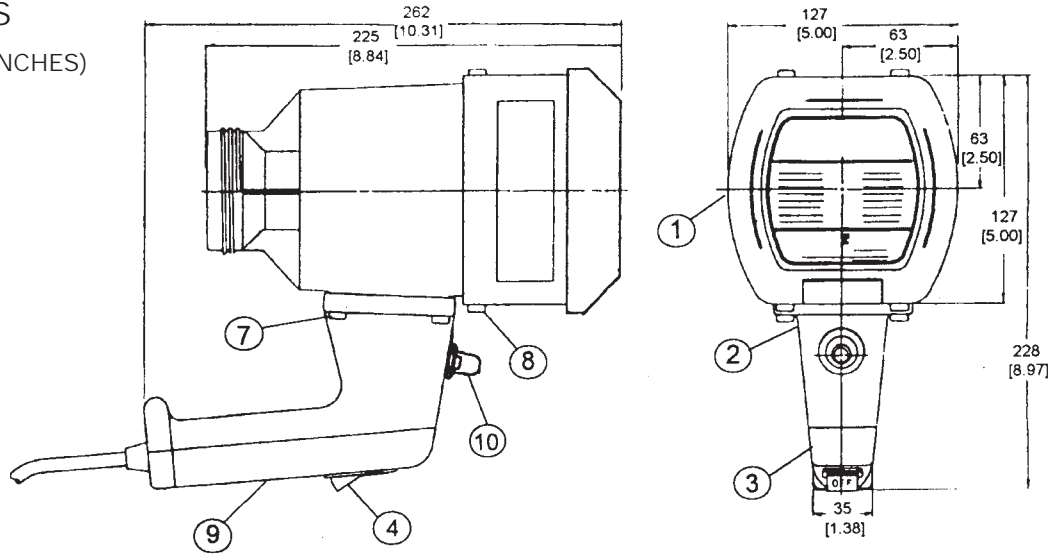
NOTE: ALL ELECTRICAL REPAIR AND WIRING SHOULD BE COMPLETED BY A COMPETENT ELECTRICIAN AND IN ACCORDANCE WITH APPLICABLE CODES. POWER CABLE SHOULD BE INSPECTED PERIODICALLY FOR ANY DETERIORATION. SHOULD ANY FAULT BE EVIDENT THEN REPLACEMENT OF THE CABLE SHOULD BE MADE BY A QUALIFIED ELECTRICIAN.

**WARNING**

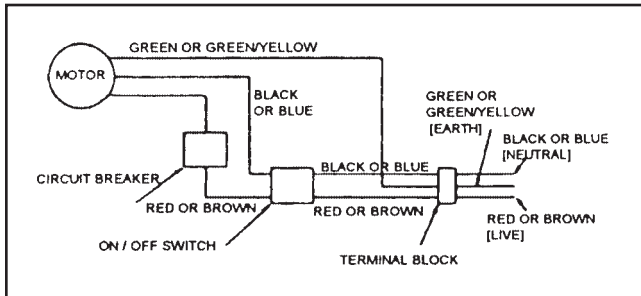
SAFETY WARNING  
HAZARDOUS VOLTAGE PRIOR TO ANY DISASSEMBLY OR ASSEMBLY OF THE JABSCO DRUM PUMP MOTOR MAKE CERTAIN THAT ALL ELECTRICAL POWER TO THE MOTOR IS DISCONNECTED AND PREVENTED FROM ACCIDENTALLY BEING CONNECTED. FAILURE TO DO SO MAY CAUSE DEATH OR INJURY.

## DIMENSIONS

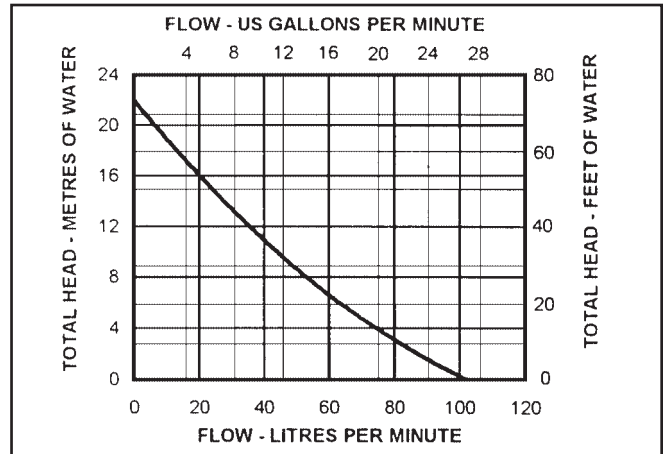
MILLIMETERS (INCHES)



## WIRING DIAGRAM



## PERFORMANCE

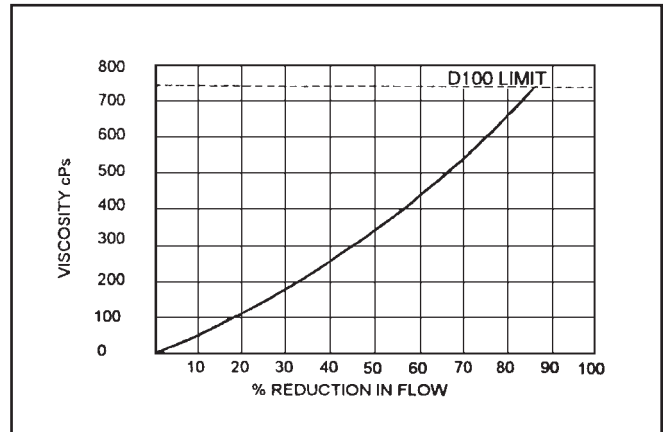


## PARTS LIST

KEY	DESCRIPTION	QTY.	6590-SERIES PART NO.
1	Cover	1	16496-0000
2	Handle	1	16428-0000
3	Handle Cover	1	16429-0000
4	Switch	1	18753-0448
5	Screw Motor Handle 5/8 long	4	Motor Screw Kit
6	Screw Motor Handle 3/8 long	4	23642-0200 Contains these screws
7	Screw Handle Cover 1-1/4 long	5	screws
8	Splash Cover	1	X5604-002
	Motor Brush Kit - 115	1	18753-0083
	- 220	1	18753-0084

NOTE: Refer to Safety & Operating Instructions before use. Servicing may only be undertaken by a Competent Service Centre.

## VISCOSITY CORRECTION CURVE



## Jabsco



**ITT Industries**  
Engineered for life

U.S.A.  
Jabsco  
1485 Dale Way, P.O. Box 2158  
Costa Mesa, CA 92628-2158  
Tel: 714.545.8251  
Fax: 714.957.0609

UNITED KINGDOM  
Jabsco  
Bingley Road, Hoddesdon  
Hertfordshire EN11 0BU  
Tel: +44 (0) 1992 450145  
Fax: +44 (0) 1992 467132

CANADA  
Fluid Products Canada  
55 Royal Road  
Guelph, Ontario N1H 1T1  
Tel: (519) 821.1900  
Fax: (519) 821.2569

JAPAN  
NHK Jabsco Company Ltd.  
3-21-10, Shin-Yokohama  
Kohoku-Ku, Yokohama, 222  
Tel: 045.475.8906  
Fax: 045.475.8908

GERMANY  
Jabsco GmbH  
Oststrasse 28  
22840 Norderstedt  
Tel: +49-40-53 43 73 -0  
Fax: +49-40-53 53 73 -11