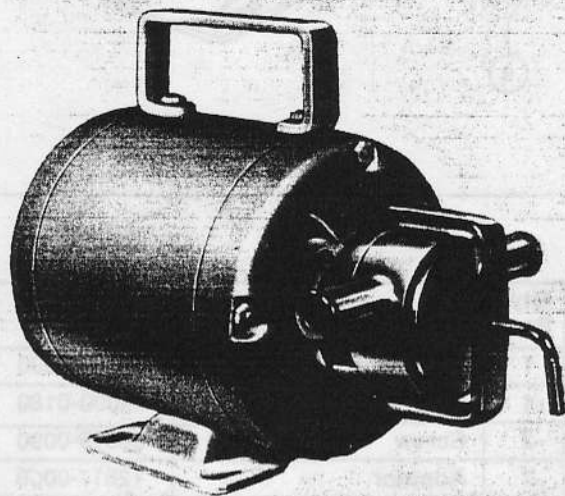


# MODEL 12810-0901

## PRODUCT DATA



MODEL 12810-0901

### DESIGN FEATURES

- Body: Type 316 Stainless Steel, Polished
- Impeller: Special Nitrile Compound
- Seal: Lip Type
- Ports: 3/4" OD-Slip on Hose Connection
- Motor: 1/6 HP, 1725 RPM, Single Split Phase, 60 Cycle, Totally Enclosed non vent with Handle, 6 ft. Cord and 3 Prong Grounded Plug, 115V A.C.
- Weight: 19 lbs. (approximately)

MODEL 12810-0901

### APPLICATIONS & OPERATING INSTRUCTIONS

Some of the many diverse products handled by JABSCO Pumps include: DAIRY PROCESSING — Buttermilk, Condensed Milk, Cream, Milk, and other assorted dairy products. BEVERAGE PROCESSING — Alcohols, Beers, Brewery Slop, Cider, Distillery Wort, Extracts, Flavor Bases, Juices, Soft Drinks, Wines. MISCELLANEOUS — Chemicals, Cosmetics, Pharmaceuticals.

1. INSTALLATION — Pump may be mounted in any position. Pump head rotates 360° to permit desired port location. With ports in upper horizontal position, intake port is on the right when looking at the pump head. If pump is mounted vertically, head should face downward to prevent spillage from entering motor.
2. SELF-PRIMING — Vertical dry suction lifts up to 15'. Pump will produce up to 22' of lift when wet. Intake line connection must be air tight to prevent product foaming and assure self-priming. Keep suction line as short as practical.
3. RUNNING DRY — The impeller is lubricated by the product being pumped. DO NOT RUN DRY FOR MORE THAN 30 SECONDS. Lack of lubricant will damage impeller.
4. TEMPERATURE — Special nitrile compound temperature range 50° to 180° F. Self-priming ability is reduced at lower end of temperature range.
5. PRESSURE — For continuous operation, pressure should not exceed 20 PSI.
6. VISCOUS PRODUCTS — Because motor speed is 1725 RPM highly viscous products can not be handled. Viscosity should be limited to 500 to 700 SSU. For more viscous product transfer, select a pedestal mounted Pureflo® pump which may be run at low speed.
7. CLEANING — Pump is designed for quick take-apart for ease of cleaning. All parts are highly polished to maintain cleanability. Care should be exercised when cleaning so that parts are not nicked or scratched.

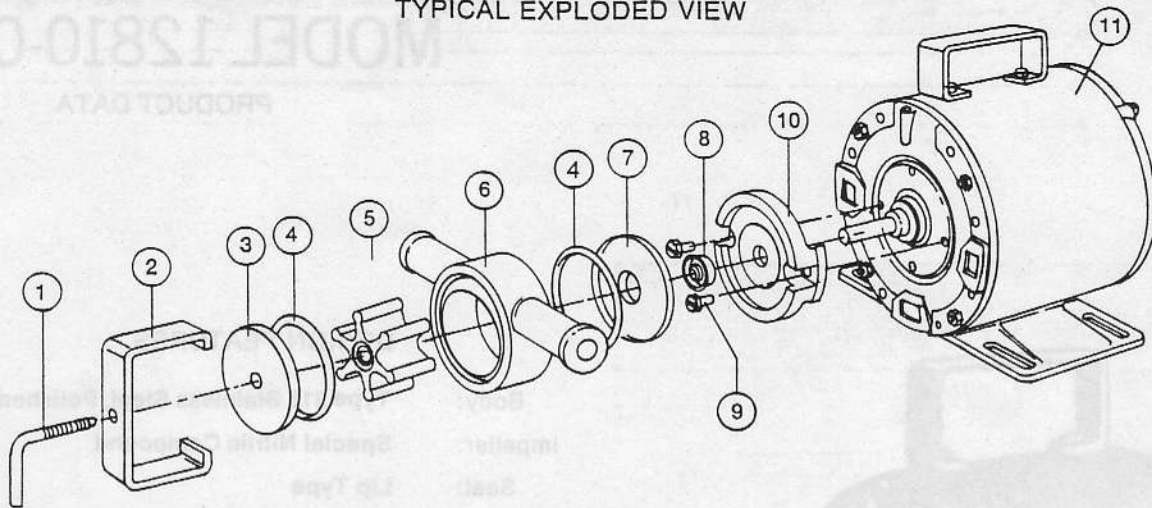
### CAPACITY CHART

TOTAL HEAD		1725 RPM
Lbs. per Sq. In.	Ft. of Water	GPM
4.3	10	5.0
8.7	20	4.6
13.0	30	4.1
17.3	40	3.5
21.6	50	2.8

Table shows approximate capacity of new pump in U.S. gallons per minute of water.

JABSCO PRODUCTS

TYPICAL EXPLODED VIEW



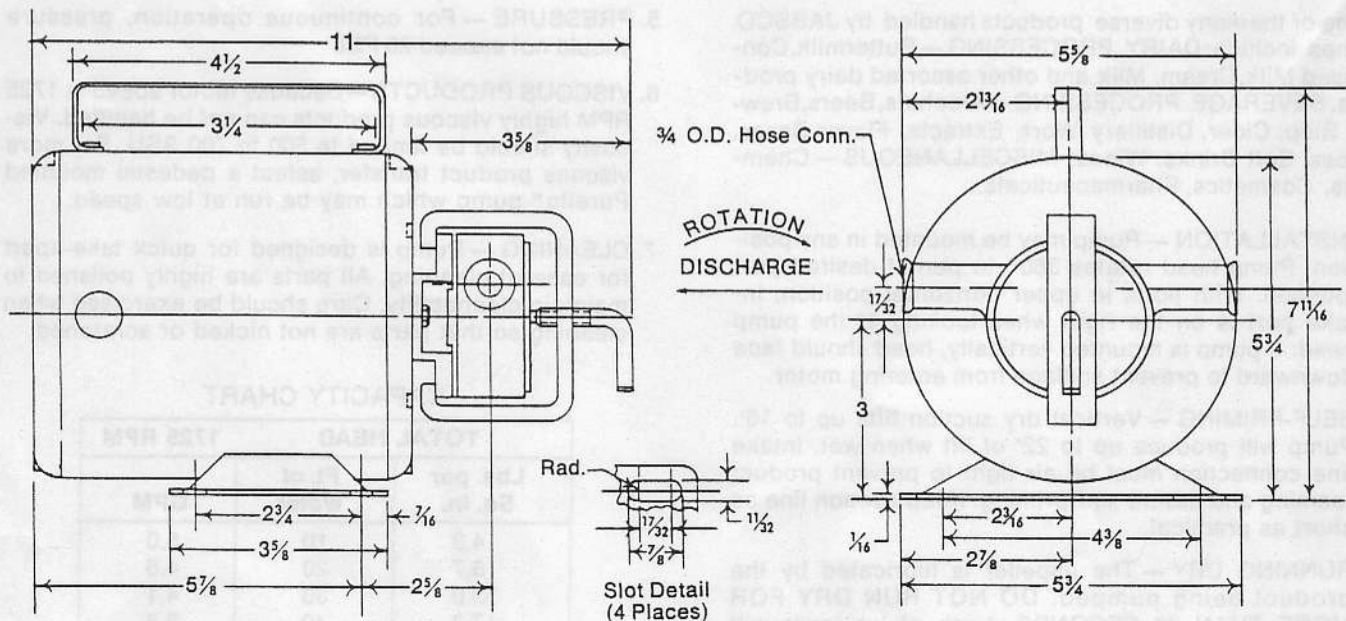
PARTS LIST

Key	Qty. Req.	Description	Part No.
1	1	Clamp Screw	12813-0000
2	1	Clamp	12818-0000
3	1	End Cover	12815-0000
4	2	*"O" Ring	92000-0900
5	1	*Impeller 7273-0003	12722-0006
6	1	Body	12814-0000

Key	Qty. Req.	Description	Part No.
7	1	Wearplate	12816-0000
8	1	*Seal	93000-0180
9	2	Screw	98019-0090
10	1	Adaptor	12817-0000
11	1	Motor	93004-1600
—	—	Service Kit	90163-0006

\*Parts Contained in Service Kit

DIMENSIONAL DRAWING



**JABSCO PRODUCTS**

A Unit of International Telephone and Telegraph Corporation / 1485 Dale Way, Costa Mesa, California 92626

Telephone: (714) 545-8251