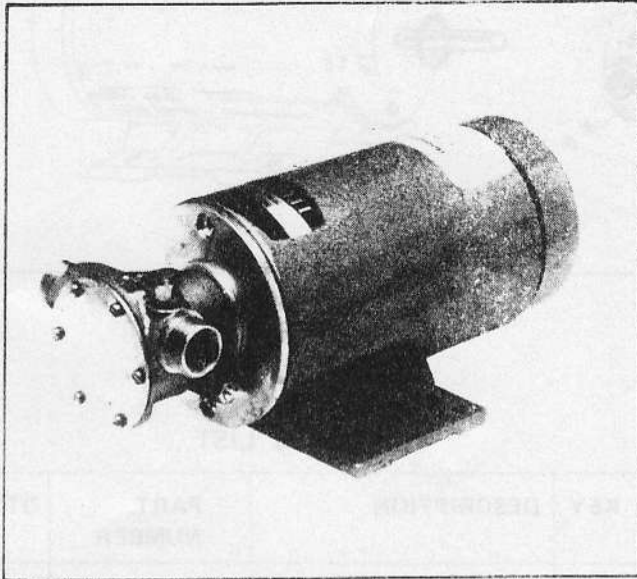




**Model 11810-0121 12 volts dc**  
**11810-0241 24 volts dc**  
**11810-0321 32 volts dc**  
**11810-1101 110 volts dc**



**SELF-PRIMING PUMPS**  
**FEATURES**

- Body:** Bronze Construction
- Impeller:** Jabsco Neoprene Compound
- Shaft:** Steel Motor Shaft Protected by Stainless Steel Impeller Sleeve
- Wearplate:** Replaceable
- Shaft Seal:** Lip Type
- Ports:** Both 3/4" Garden Hose External Thread and 1/2" Internal Pipe Thread
- Motor:** 1/3 hp/1800 RPM, Continuous Duty
- Weight:** 22 lbs (Approximately 10 kg)

Motor meets USCG Electrical Standards (Title 33, Chapter 1, Part 183; Subpart 1) for **IGNITION PROTECTION** on gasoline powered vessels.

**APPLICATIONS**

Ideal for Bilge Pumping, Bait Tank, Wash Downs, and General Marine Service.

**HEAD CAPACITY TABLE**

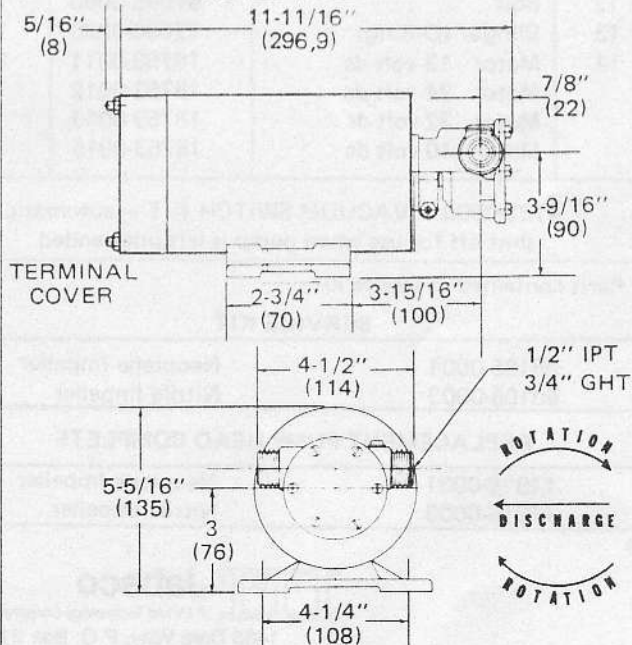
| TOTAL HEAD |                |              |                 | 1800 RPM |                |
|------------|----------------|--------------|-----------------|----------|----------------|
| p.s.i.     | kg per sq. cm. | ft. of water | metres of water | GPM      | litres per min |
| 4.3        | 0,3            | 10           | 3               | 11,2     | 42,4           |
| 8.7        | 0,6            | 20           | 6,1             | 10,5     | 39,7           |
| 13.0       | 0,9            | 30           | 9,1             | 9,4      | 35,6           |
| 17.3       | 1,2            | 40           | 12,2            | 8,1      | 30,7           |

| MOTOR VOLTAGE | AMP DRAW | FUSE SIZE | WIRE SIZE |         |         |
|---------------|----------|-----------|-----------|---------|---------|
|               |          |           | 0'-10'    | 11'-20' | 21'-35' |
| 12 Vdc        | 28.0     | 30        | 10        | 8       | 6       |
| 24 Vdc        | 14.0     | 15        | 16        | 14      | 14      |
| 32 Vdc        | 9.5      | 10        | 16        | 16      | 16      |
| 110 Vdc       | 2.6      | 3         | 16        | 16      | 16      |

**OPERATING INSTRUCTIONS**

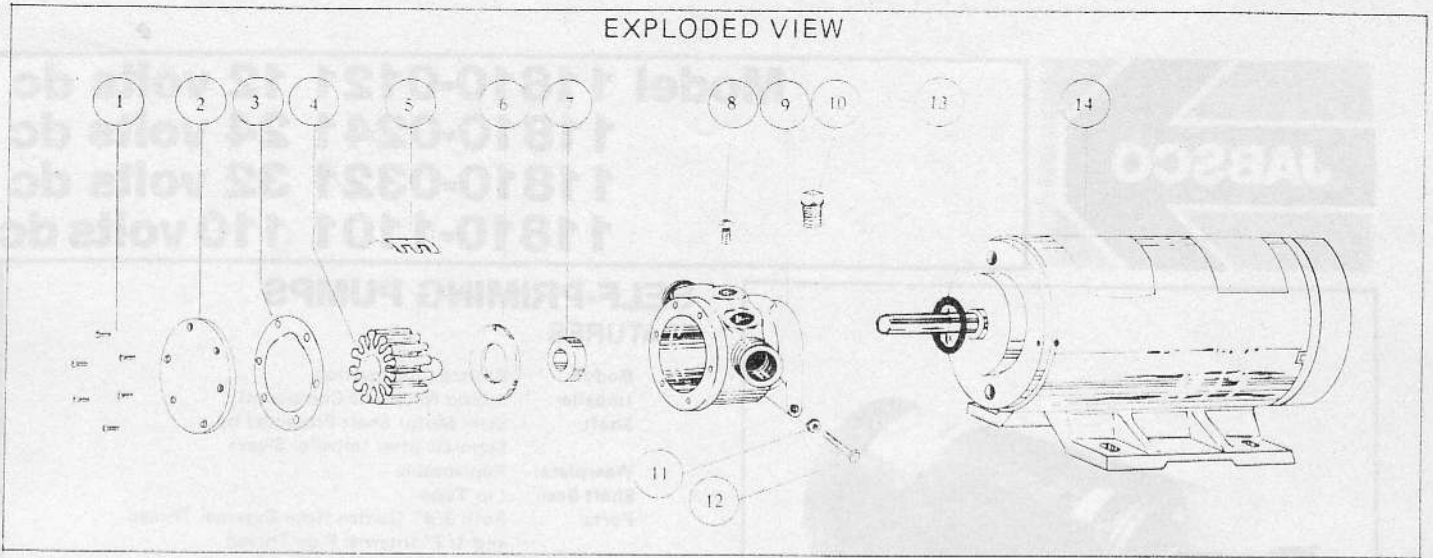
- INSTALLATION** — Pump may be mounted in any position without loss of efficiency; however, it is suggested that the pump head be down if vertical mounting is desired. The rotation of the motor shaft determines the location of the pump's intake and discharge ports. Refer to Dimensional Drawing.
- DRIVE** — Direct.
- SELF-PRIMING** — Pump will produce a suction lift approaching 10 feet when dry and a lift up to 22 feet when primed. **BE SURE SUCTION LINES ARE AIRTIGHT** or pump will not self-prime.
- RUNNING DRY** — Unit depends on liquid pumped for lubrication. **DO NOT RUN DRY** for more than 30 seconds. Lack of liquid will burn the impeller.
- NOTICE** — Do not pump solvents, thinners, highly concentrated or organic acids. Pump damage may result. If corrosive fluids must be handled, pump life will be prolonged if pump is flushed with water after each use or after each work day.
- PRESSURES** — For continuous operation, do not exceed 40 feet total developed head.
- TEMPERATURE** — Impeller supplied in pump is recommended for liquid temperatures of 45° - 180°F (7.2° - 82.2°C). Optional Nitrile Impeller 50° - 180°F (10° - 82.2°C).
- SPARE PARTS** — To avoid costly shut downs, keep a Jabsco Service Kit on hand.

**DIMENSIONAL DRAWING**  
 INCHES (MILLIMETRES)



Models 11810-0121, 11810-0241, 11810-0321, 11810-1101

EXPLODED VIEW



SERVICE INSTRUCTIONS

DISASSEMBLY

1. Remove end cover screws, gasket and end cover.
2. Grasp impeller hub with water pump pliers and withdraw from body.
3. Loosen cam screw and remove cam. Clean off sealant. Remove wearplate with screwdriver or hooked wire.
4. Loosen nut at body clamp. Remove body from motor shaft.
5. Press out seal from motor mounting end of body towards impeller bore.
6. Remove slinger from shaft.

NOTE: Inspect all parts for wear or damage and replace if necessary. When returning to factory for repair, return the pump head only, unless motor replacement is required.

ASSEMBLY

1. Install slinger and position 1/4" from motor boss.
2. Press seal into seal bore with lip facing toward the impeller bore. Apply grease to back of seal lip.
3. Install wearplate, aligning slot with dowel pin.
4. Apply sealant to top of cam and cam screw threads. Install cam with cam screw.
5. Install body on motor. Tighten nut at clamp. Do not over-tighten or binding of shaft will result.
6. Lubricate impeller bore with water pump grease or equivalent.
7. Lubricate shaft O D with grease, align drive ding in extended impeller insert with flat on shaft and install impeller.
8. Install gasket, end cover and end cover screws.

PARTS LIST

| KEY | DESCRIPTION                   | PART NUMBER | QTY. |
|-----|-------------------------------|-------------|------|
| 1   | Screw (End Cover)             | 91002-0020  | 6    |
| 2   | End Cover                     | 11830-0000  | 1    |
| 3*  | Gasket                        | 11816-0000  | 1    |
| 4*  | Neoprene Impeller             | 5929-0001   |      |
|     | Nitrile Impeller              | 5929-0003   | 1    |
| 5   | Cam                           | 490-0000    | 1    |
| 6   | Wearplate                     | 2235-0000   | 1    |
| 7*  | Seal (Shaft)                  | 92700-0420  | 1    |
| 8   | Screw (Cam)                   | 91003-0010  | 1    |
| 9   | Body                          | 11814-0000  | 1    |
| 10  | Plug (for vacuum switch hole) | 92650-0070  | 1    |
| 11  | Nut                           | 91105-0030  | 1    |
| 12  | Bolt                          | 91095-0090  | 1    |
| 13  | Slinger (O-Ring)              | 92000-0230  | 1    |
| 14  | Motor 12 volt dc              | 18753-0011  | 1    |
|     | Motor 24 volt dc              | 18753-0012  |      |
|     | Motor 32 volt dc              | 18753-0013  |      |
|     | Motor 110 volt dc             | 18753-0015  |      |

4732-0000 – VACUUM SWITCH KIT – automatic shut off for use when pump is left unattended.

\* Parts contained in service kit.

SERVICE KIT

|            |                   |
|------------|-------------------|
| 90105-0001 | Neoprene Impeller |
| 90105-0003 | Nitrile Impeller  |

REPLACEMENT PUMP HEAD COMPLETE

|            |                   |
|------------|-------------------|
| 11818-0001 | Neoprene Impeller |
| 11818-0003 | Nitrile Impeller  |

THE PRODUCTS DESCRIBED HEREIN ARE SUBJECT TO THE JABSCO ONE YEAR LIMITED WARRANTY, WHICH IS AVAILABLE FOR YOUR INSPECTION UPON REQUEST.

**Jabco**  
ITT Fluid Technology Corporation  
1485 Dale Way, P.O. Box 2158  
Costa Mesa, CA 92628-2158  
Telephone: (714) 545-8251